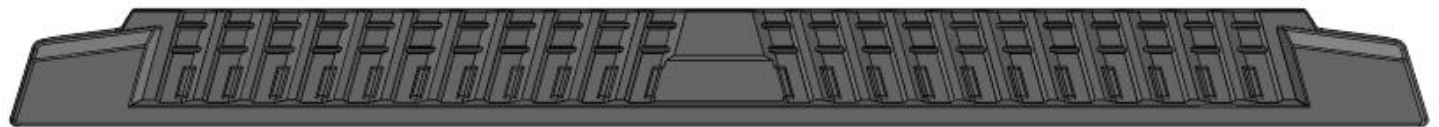


## Installation Instructions

### PARTS LIST:

Qty	Item Description	Qty	Item Description
1	DS P1 Running Boards	12	6mm Hex Nuts
1	PS P1 Running Boards	12	6mm x 22mm x 2mm Flat Washers
1	Driver/Left Front Mounting Bracket	12	6mm Lock Washers
1	Passenger/Right Front Mounting Bracket	12	8mm x 24mm x 2mm Flat Washers
2	Driver/Left Center/Rear Mounting Bracket	12	8mm Lock Washers
2	Passenger/Right Center/Rear Mounting Bracket	12	8-1.25mm x 30mm Hex Bolts
6	6mm Double Bolt Plates		



← Front

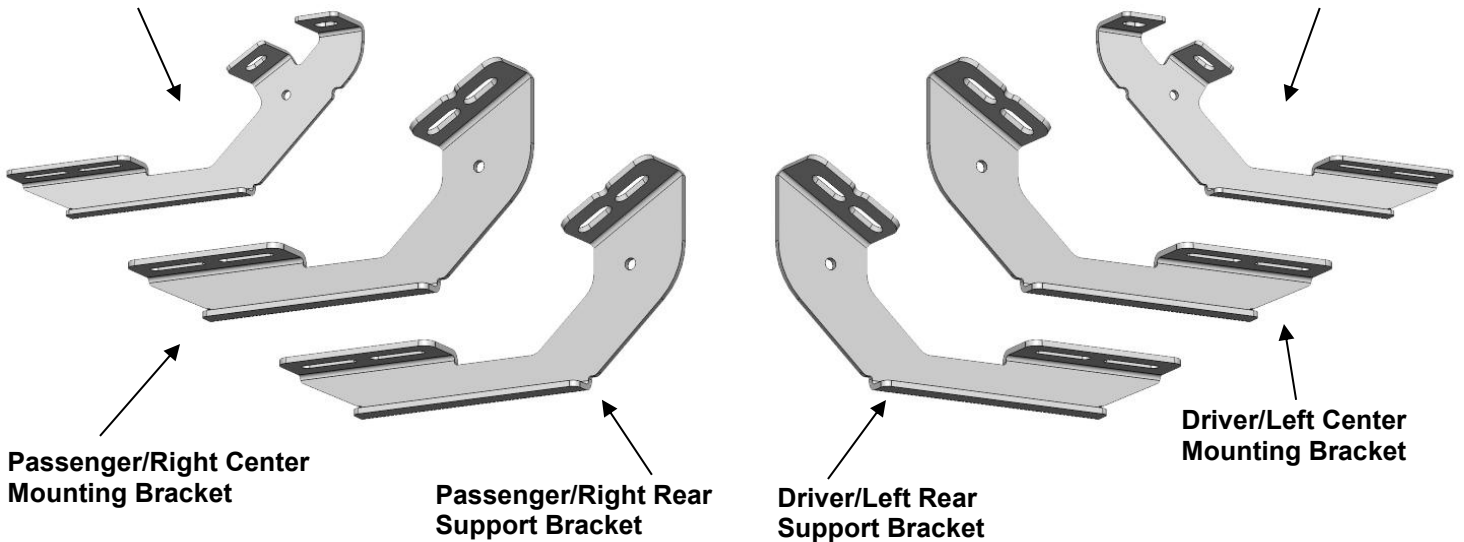
**Passenger/Right Running Board**



**Driver/Left Running Board**

**Passenger/Right Front Mounting Bracket**

**Driver/Left Front Mounting Bracket**

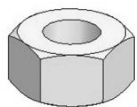


**Passenger/Right Center Mounting Bracket**

**Passenger/Right Rear Support Bracket**

**Driver/Left Rear Support Bracket**

**Driver/Left Center Mounting Bracket**



**Hex Nut**



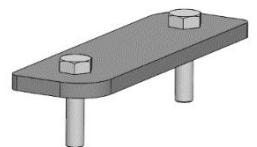
**Lock Washer**



**Flat Washer**

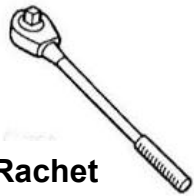


**Hex Bolt**



**Bolt Plate**

**TOOLS REQUIRED**



**Ratchet**



**13mm Socket**



**Extensions**

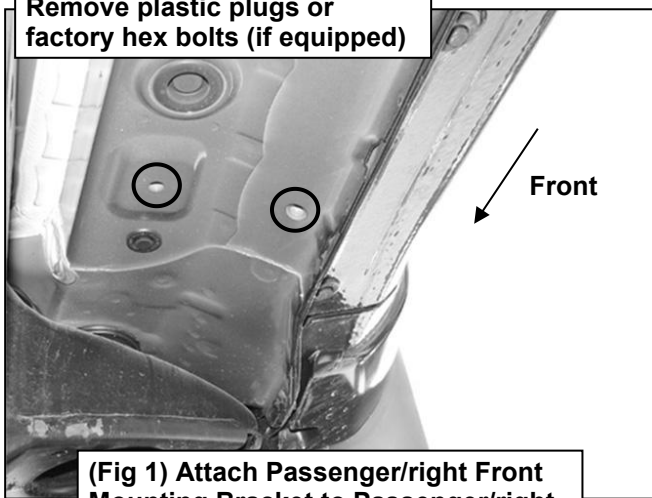


**Wrench**

**1**

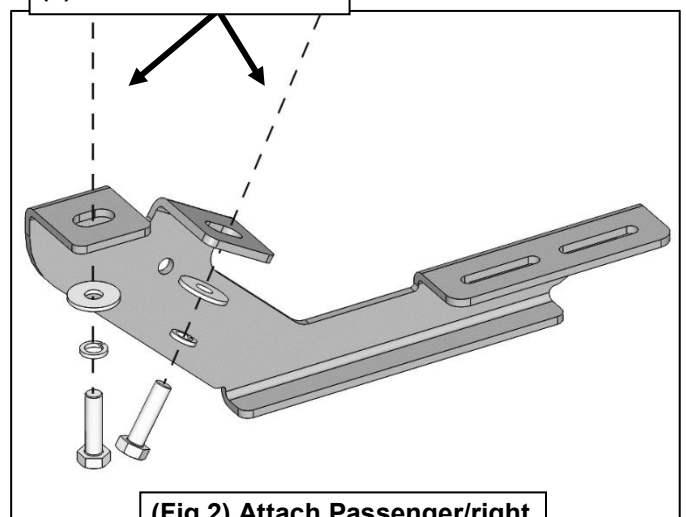
Follow (Fig 1 – 9) to attach the brackets to the Passenger Side. Repeat the following steps on the Driver Side. Ensure hardware is hand tight at this point.

Remove plastic plugs or  
factory hex bolts (if equipped)

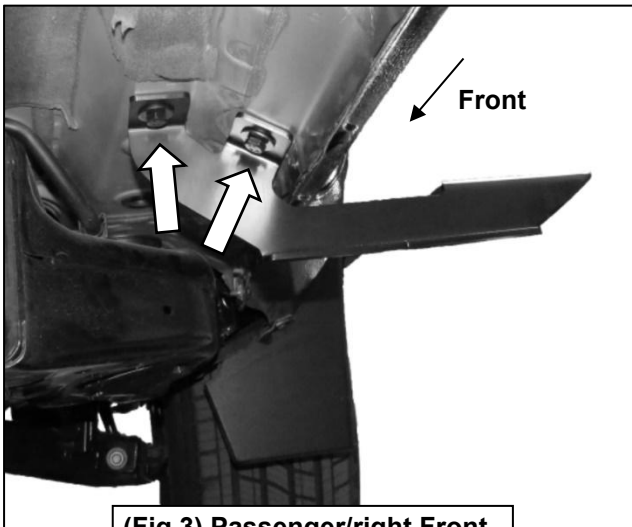


**(Fig 1) Attach Passenger/right Front Mounting Bracket to Passenger/right Front Mounting location**

(2) 8mm Hex Bolts  
(2) 8mm Lock Washers  
(2) 8mm Flat Washers



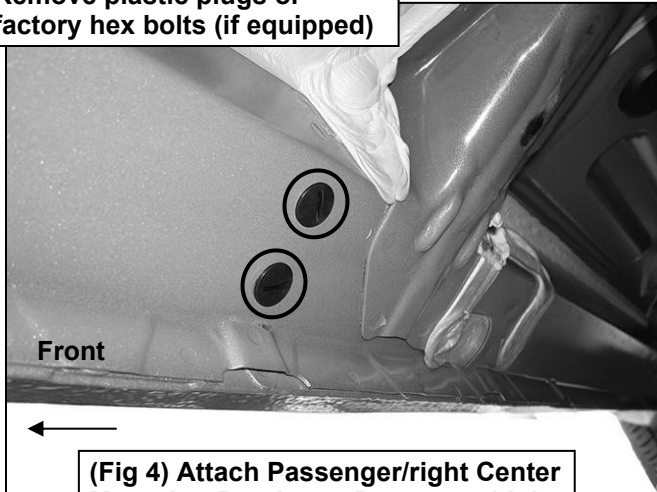
**(Fig 2) Attach Passenger/right Front Mounting Bracket**



**(Fig 3) Passenger/right Front Mounting Bracket installed**

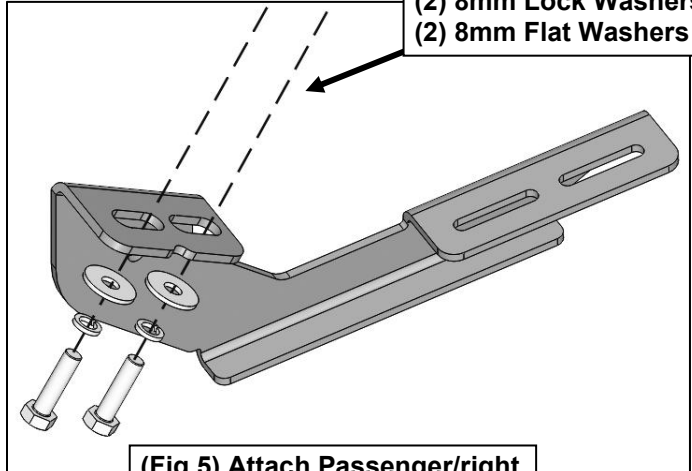
**P1 Running Board  
24+ Toyota Tacoma Double Cab**

Remove plastic plugs or  
factory hex bolts (if equipped)

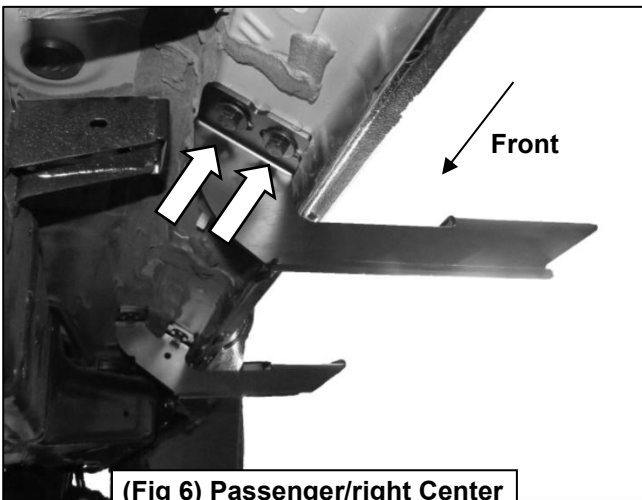


**(Fig 4) Attach Passenger/right Center  
Mounting Bracket to Passenger/right  
Center Mounting location**

(2) 8mm Hex Bolts  
(2) 8mm Lock Washers  
(2) 8mm Flat Washers

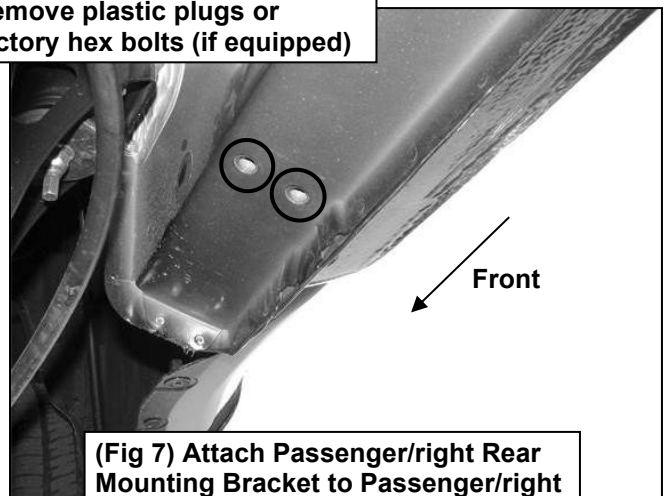


**(Fig 5) Attach Passenger/right  
Center Mounting Bracket**



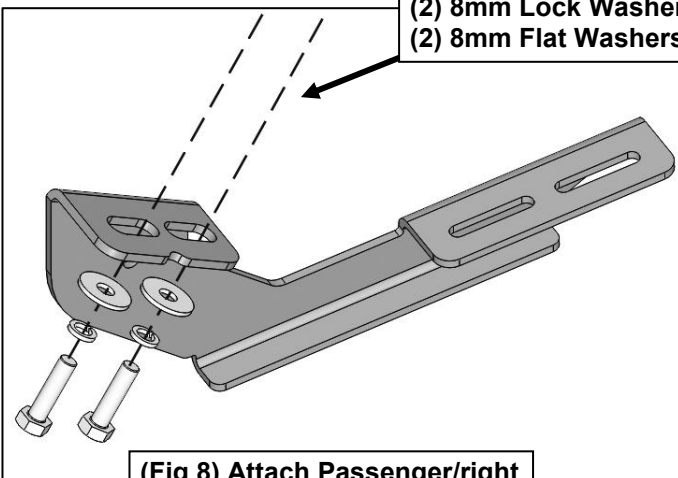
**(Fig 6) Passenger/right Center  
Mounting Bracket installed**

Remove plastic plugs or  
factory hex bolts (if equipped)

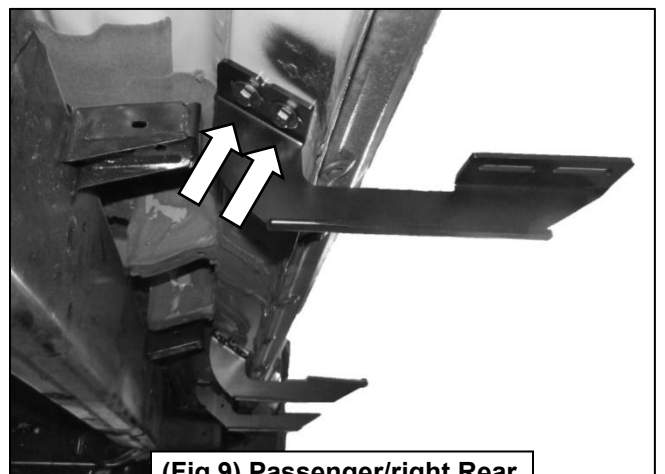


**(Fig 7) Attach Passenger/right Rear  
Mounting Bracket to Passenger/right  
Rear Mounting location**

(2) 8mm Hex Bolts  
(2) 8mm Lock Washers  
(2) 8mm Flat Washers



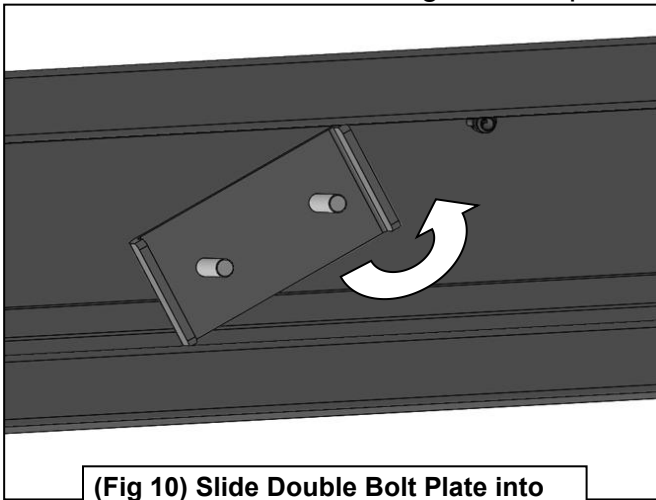
**(Fig 8) Attach Passenger/right  
Rear Mounting Bracket**



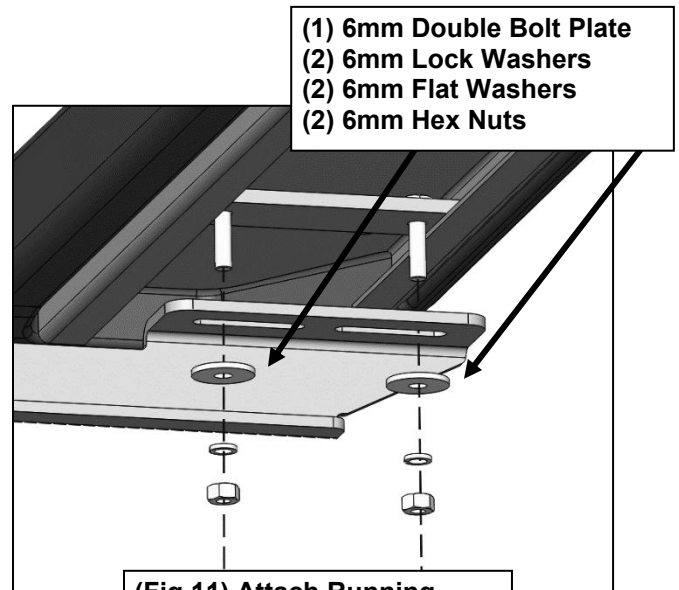
**(Fig 9) Passenger/right Rear  
Mounting Bracket installed**

2

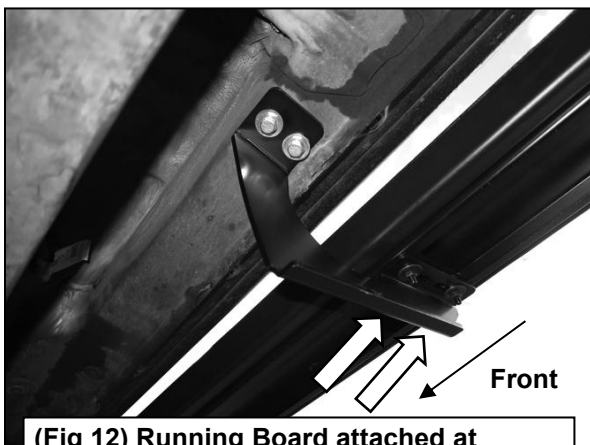
Follow (Fig 10 – 12) to install the running board. Repeat the following steps on the Driver Side. Ensure hardware is hand tight at this point.



(Fig 10) Slide Double Bolt Plate into channel on bottom of Running Board



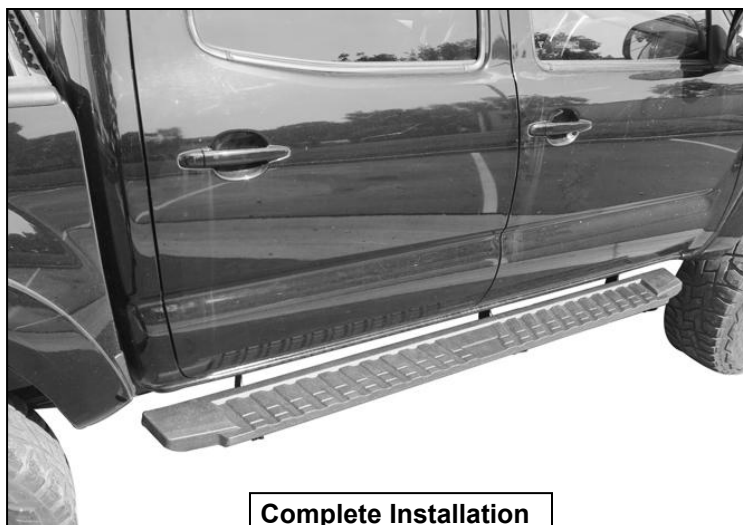
(Fig 11) Attach Running Board to Mounting Brackets



(Fig 12) Running Board attached at Passenger/right Center Mounting Bracket

3

Level and straighten running board, then tighten all fasteners. Installation is complete. Do periodic inspections to the installation to make sure that all hardware is secure and tight.



Complete Installation