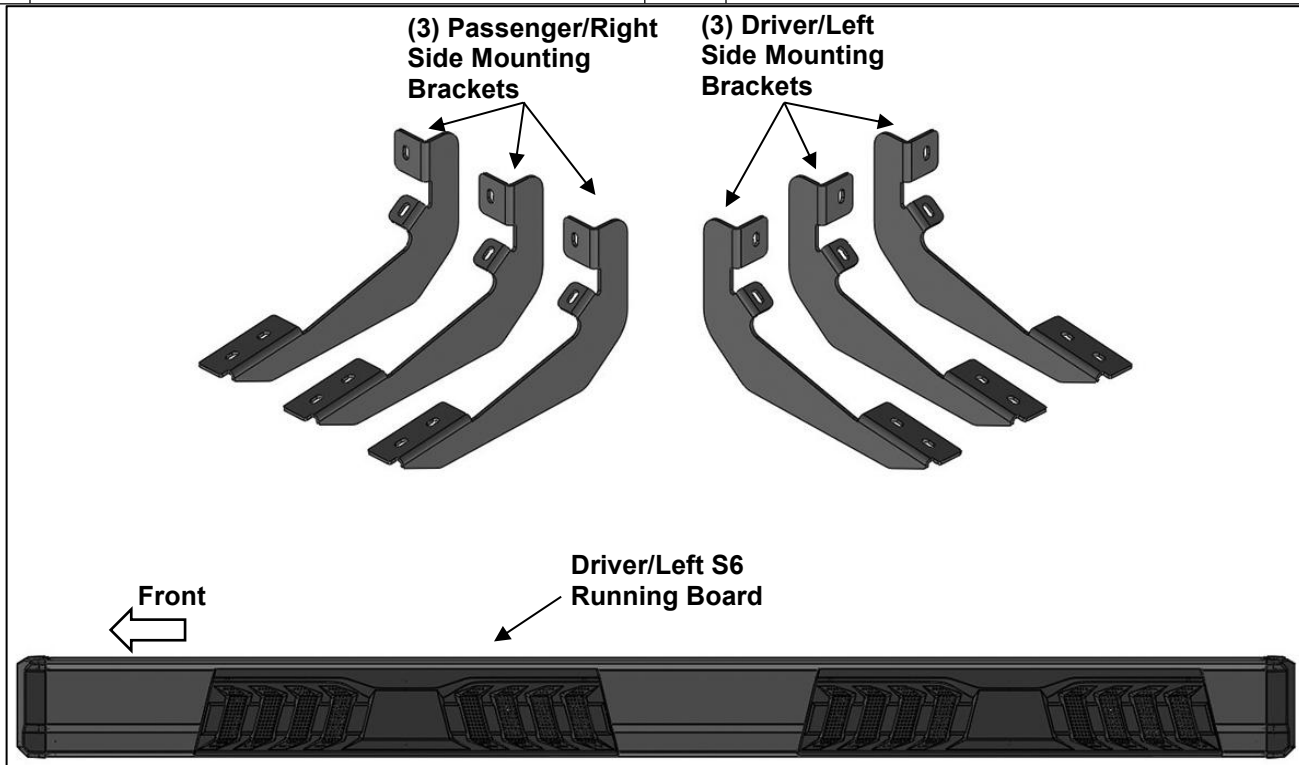


PARTS LIST:

1	Driver/Left side S6 Running Board	12	8mm x 30mm Hex Bolts
1	Passenger/Right side S6 Running Board	24	8mm x 24mm OD x 2mm Flat Washers
3	Driver/Left side Mounting Brackets	18	8mm Nylon Lock Nuts
3	Passenger/Right side Mounting Brackets	12	8mm Lock Washers
6	8mm x 35mm Double Bolt Plates		



PROCEDURE:

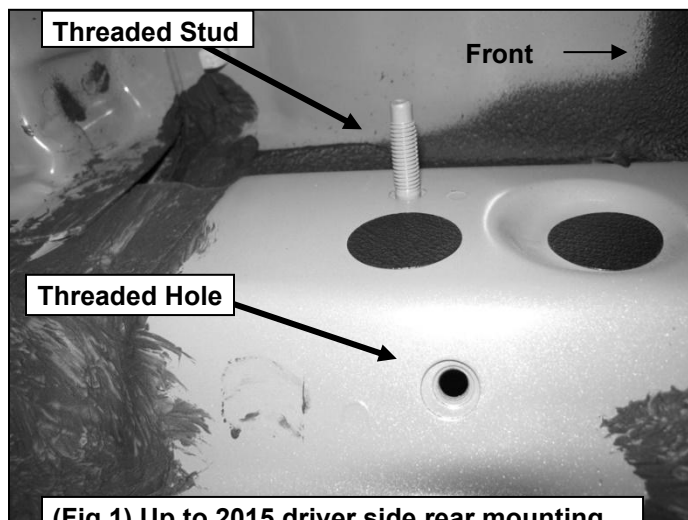
REMOVE CONTENTS FROM BOX. VERIFY ALL PARTS ARE PRESENT. READ INSTRUCTIONS CAREFULLY BEFORE STARTING INSTALLATION.

1. Start installation at the front of the Driver/Left side of the vehicle and locate the factory threaded holes or stud located on the side of the inner body panel, **(Figures 1 & 2)**. There are (4) mounting locations along the body panel. Bracket installation will use the 1st, 2nd and 4th mounting locations. **NOTE:** Remove the plastic plug or any insulation on the side panel to locate the threaded holes.
2. Select (1) Driver/Left Mounting Bracket. Attach the Bracket to the mounting location with:
 - a. **Models with threaded stud:** Attach Bracket to stud with (1) 8mm x 24mm Flat Washer and (1) 8mm Nylon Lock Nut. Next, use (1) 8mm Hex Bolt, (1) 8mm Lock Washer and (1) 8mm x 24mm Flat Washer to attach the Bracket to the threaded insert hole on the body panel, **(Figure 3)**. Do not tighten hardware.
 - b. **Models without threaded stud:** Attach Bracket to the upper threaded hole with (1) 8mm x 30mm Hex Bolt, (1) 8mm Lock Washer and (1) 8mm x 24mm Flat Washer. Attach Bracket to the lower threaded hole with (1) 8mm Hex Bolt, (1) 8mm Lock Washer and (1) 8mm x 24mm Flat Washer, **(Figure 3)**. Do not tighten hardware.
3. Repeat **Steps 1 & 2** to install the center and rear Mounting Brackets.
4. Select the Driver/Left S6 Running Board. Select (3) Double Bolt Plates. Insert the Bolt Plates into the channel in the bottom of the Running Board closest to the Brackets, **(Figure 4)**. Lift the Running Board up and guide the studs through the Brackets. **IMPORTANT:** Do not slide, (front to back), the Running Board on the Brackets or damage to the finish may result.

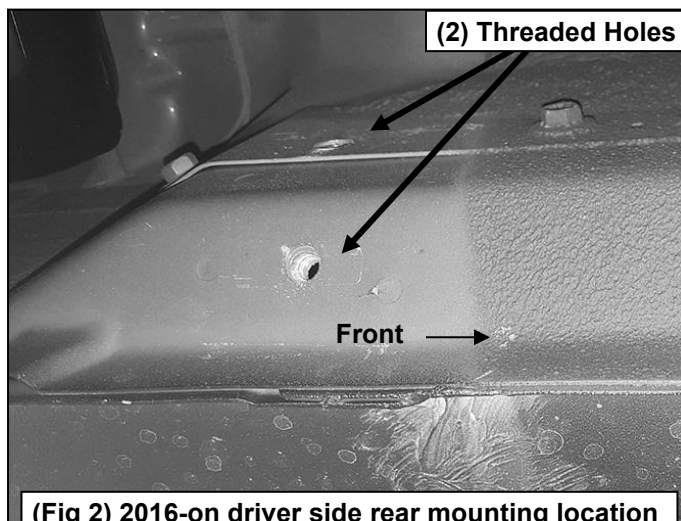
5. Attach the Running Board to the Brackets with (6) 8mm x 24mm Flat Washers and (6) 8mm Nylon Lock Nuts (**Figure 5**). Do not tighten hardware.
6. Level and adjust the Running Board and tighten all hardware.
7. Repeat **Steps 1—6** to attach the Passenger/Right S6 Running Board.
8. Do periodic inspections of the installation to make sure that all hardware is secure and tight.

To protect your investment: Do not use any type of polish or wax that may contain abrasives that could damage the finish. Mild soap may be used to clean the Running Board.

Driver/Left Side Installation Pictured



(Fig 1) Up to 2015 driver side rear mounting location pictured. Note: Remove plastic plugs to locate factory threaded holes



(Fig 2) 2016-on driver side rear mounting location pictured. Note: two factory threaded holes only

Driver/Left Side Installation Pictured

