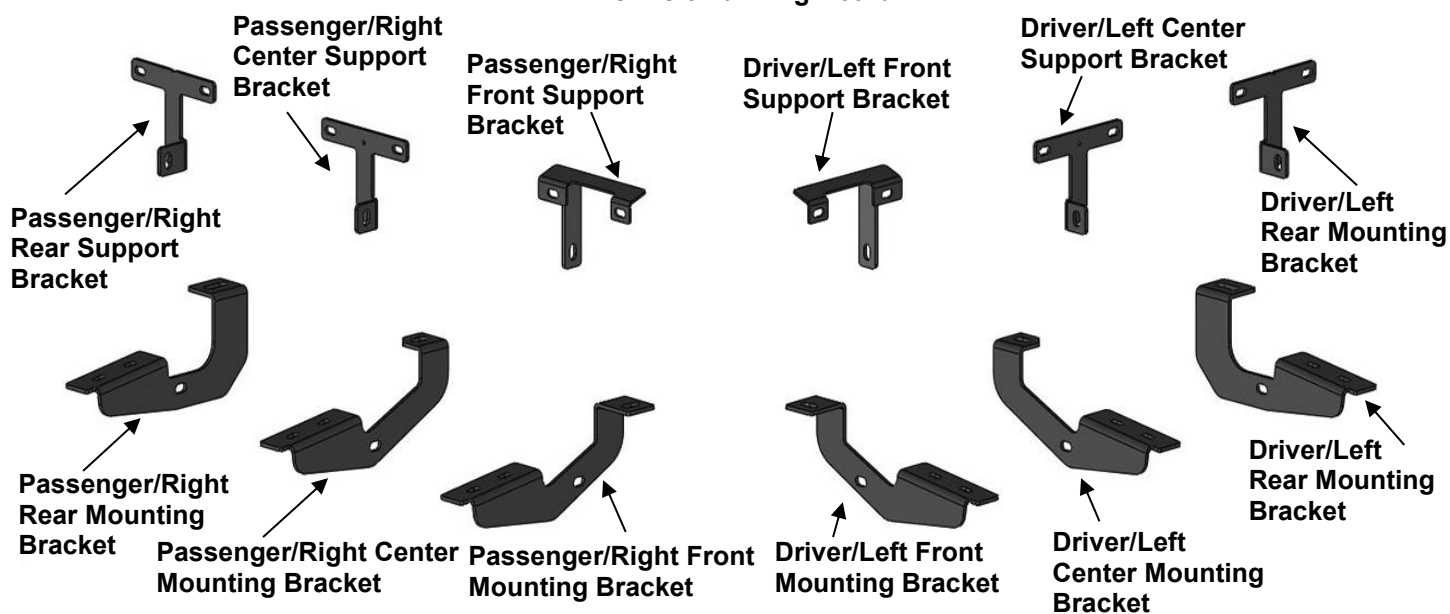
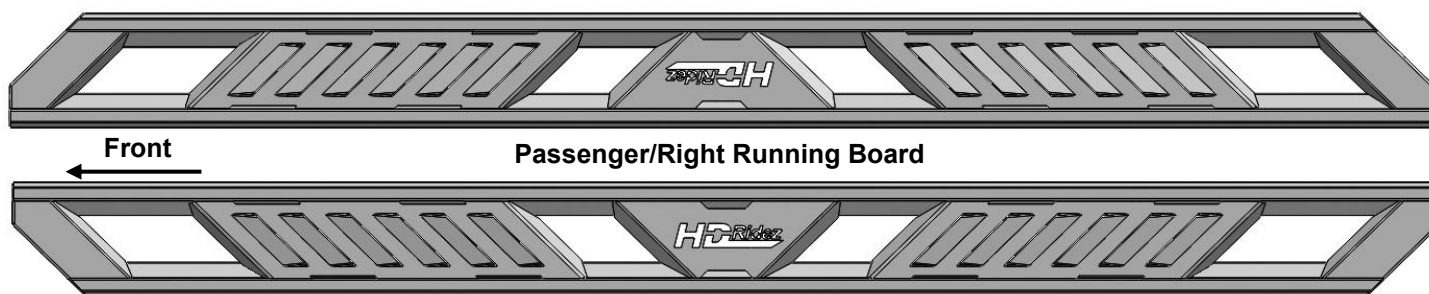


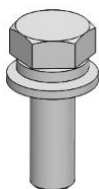
## Installation Instructions

### Parts List:

| Qty | Item Description                             | Qty | Item Description                          |
|-----|--|-----|---|
| 1   | Driver/Left Side Running Board               | 1   | Driver/Left Side Rear Support Bracket     |
| 1   | Passenger/Right Side Running Board           | 1   | Passenger/Right Side Rear Support Bracket |
| 1   | Driver/Left Side Front Mounting Bracket      | 8   | 10-1.5mm x 30mm Hex Bolts                 |
| 1   | Passenger/Right Side Front Mounting Bracket  | 16  | 10mm x 24mm x 2.2mm Flat Washers          |
| 1   | Driver/Left Side Center Mounting Bracket     | 8   | 10mm Nylon Lock Nuts                      |
| 1   | Passenger/Right Side Center Mounting Bracket | 16  | 8-1.25mm x 25mm Combo Bolts               |
| 2   | Driver/Left Side Rear Mounting Bracket       | 8   | 8-1.25mm x 35mm Hex Bolts                 |
| 2   | Passenger/Right Side Rear Mounting Bracket   | 8   | 8mm x 28mm x 3mm Flat Washers             |
| 1   | Driver/Left Side Front Support Bracket       | 8   | 8mm Lock Washers                          |
| 1   | Passenger/Right Side Front Support Bracket   | 16  | 6-1.0mm x 25mm Hex Bolts                  |
| 2   | Driver/Left Side Center Support Bracket      | 32  | 6mm x 22mm x 2mm Flat Washers             |
| 2   | Passenger/Right Side Center Support Bracket  | 16  | 6mm Nylon Lock Nuts                       |



Hex Bolt



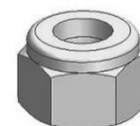
Combo Bolt



Lock Washer

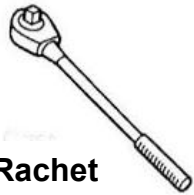


Flat Washer



Nylon Lock Nut

## TOOLS REQUIRED



Ratchet



Sockets



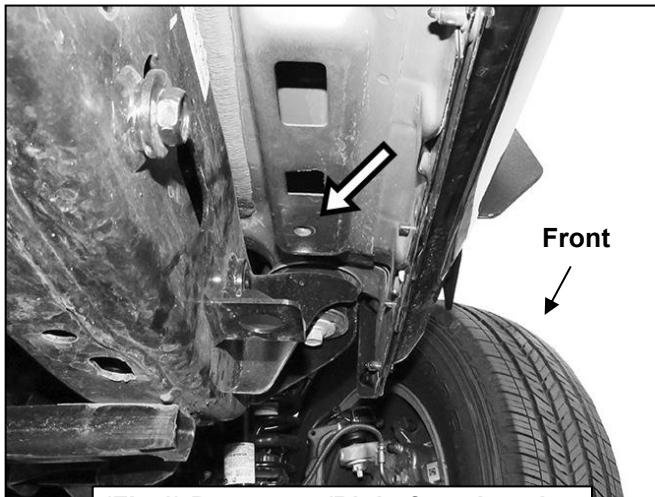
Extensions



Wrench

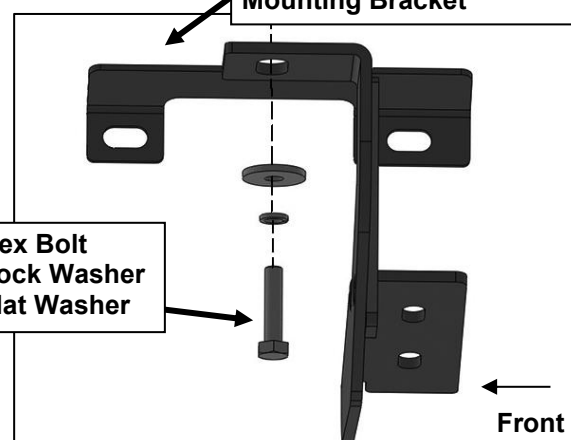
1

Follow (Fig 1 – 9) to attach Mounting and Support Brackets to the Passenger Side. Repeat the following steps on the Driver Side. Ensure hardware is hand tightened at this point.



(Fig 1) Passenger/Right front location

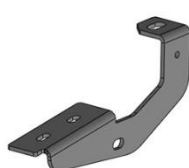
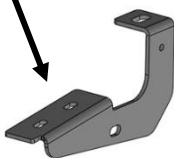
The front Mounting bracket has a longer mounting tab than the Center and Rear Mounting Bracket



(Fig 2) Attach the Passenger/Right Front Mounting Bracket to the front location

The Rear Mounting Bracket has a notch in the bottom

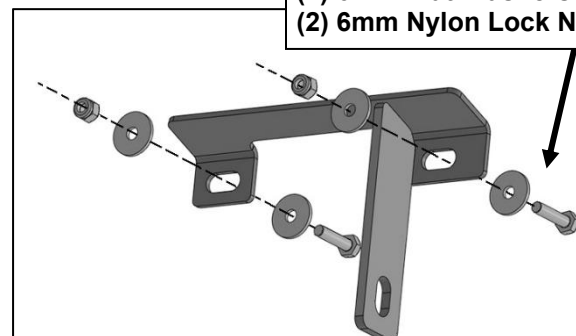
The Center Mounting Bracket has an angled edge on the top



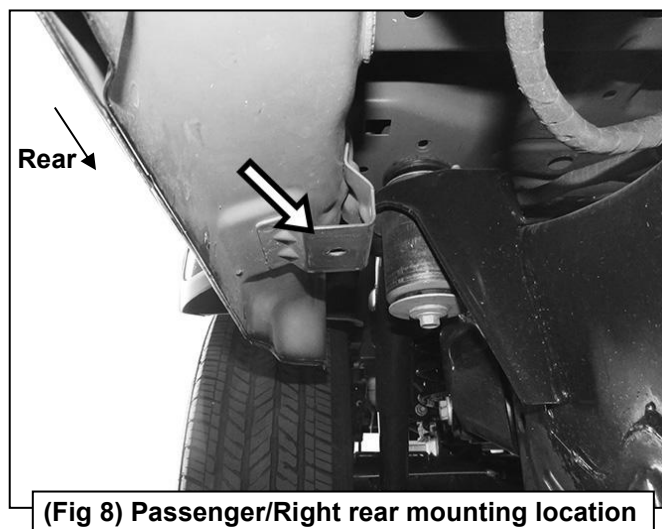
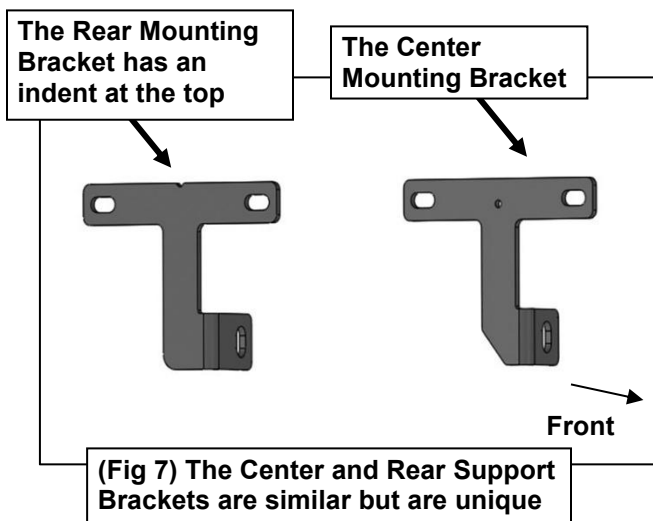
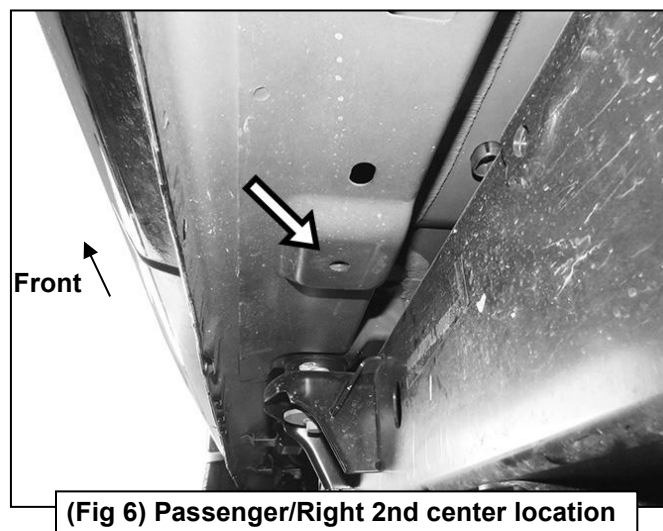
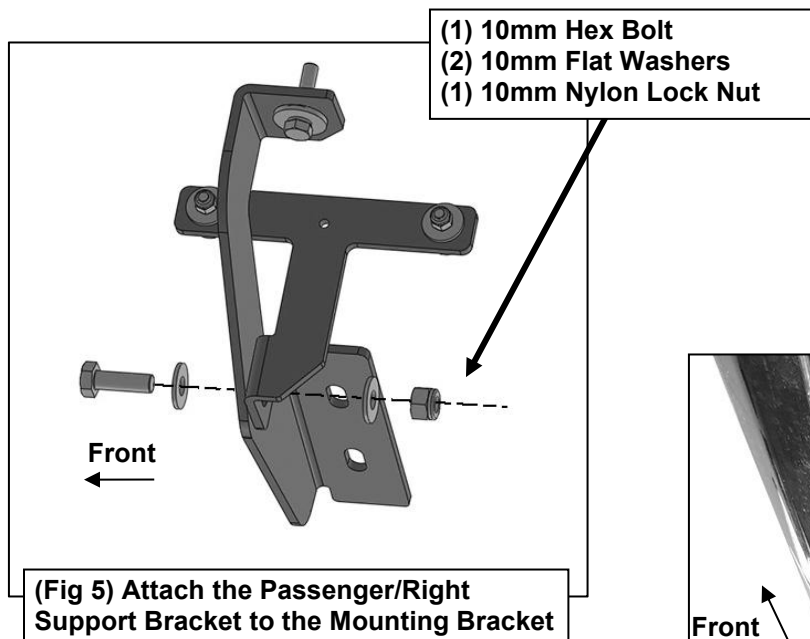
Front

(Fig 3) The Center and Rear Support Brackets are similar but are unique

(2) 6mm Hex Bolts  
(4) 6mm Flat Washers  
(2) 6mm Nylon Lock Nuts

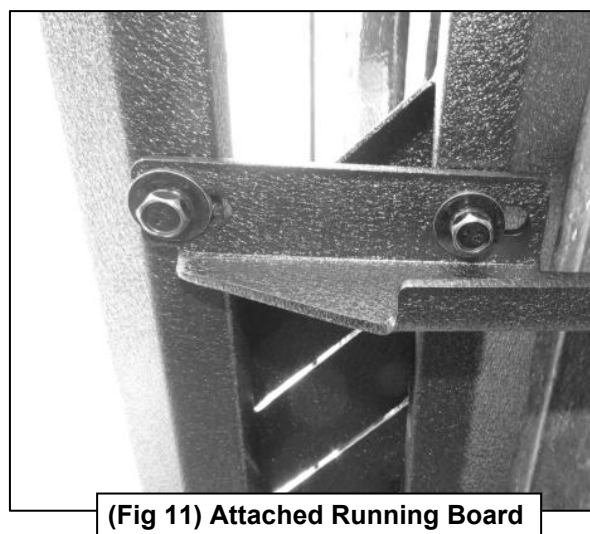
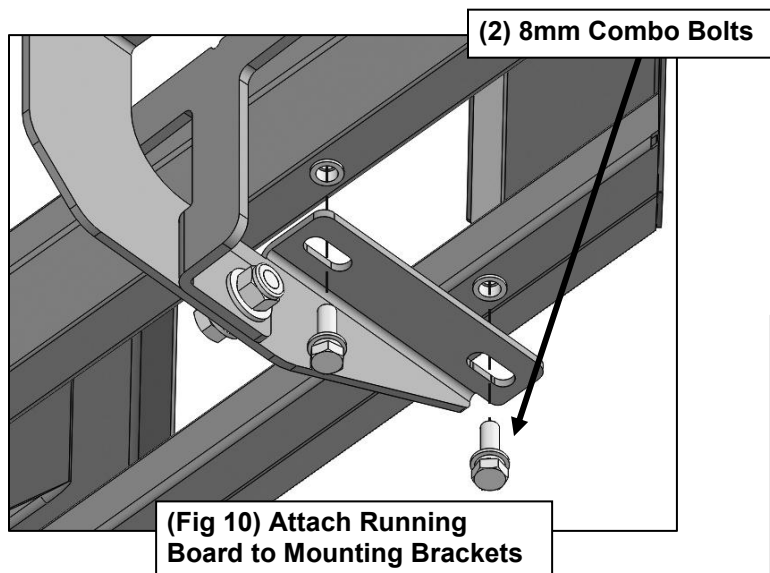


(Fig 4) Attach the Passenger/Right Front Support Bracket to the pinch trim



**2**

Follow (Fig 10 – 11) to attach Passenger/Right Running Board to Mounting Brackets. Repeat the following steps on the Driver/Left side. Ensure hardware is hand tightened at this point.



**3**

Ensure Running Board is level, then tighten all hardware. Installation is complete. Do periodic inspections to the installation to make sure that all hardware is secure and tight.

