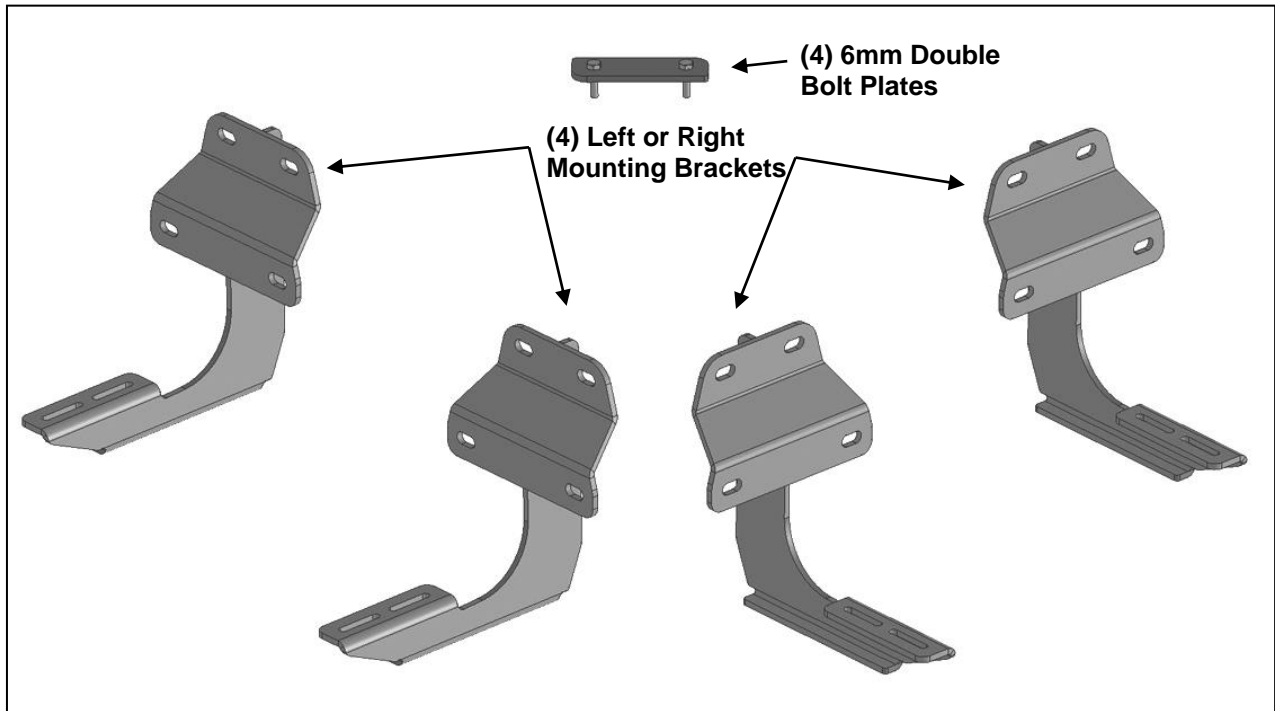


**P1 PLASTIC MOLDED RUNNING BOARDS
15-18 F150 SUPER CAB & 2017-2018 F25-350 SUPER DUTY SUPER CAB**

PARTS LIST:

2	78" P1 Molded Running Board	4	6mm Double Bolt Plates
4	Mounting Brackets	8	6mm x 22mm x 2mm Flat Washers
12	8mm Plastic Retainers	8	6mm Lock Washers
12	8mm x 24mm x 2mm Flat Washers	8	6mm Hex Nuts
12	8-1.25mm Nylon Lock Nuts		



PROCEDURE:

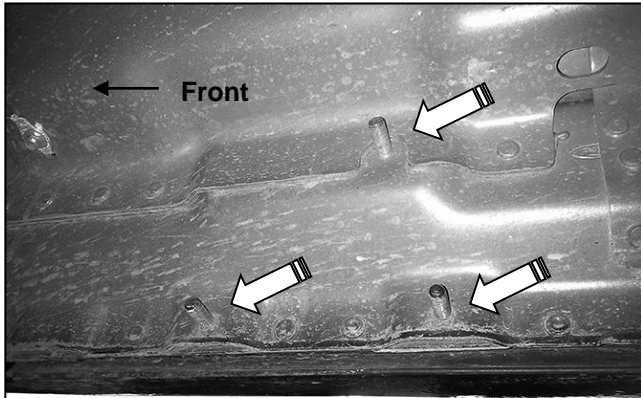
REMOVE CONTENTS FROM BOX. VERIFY ALL PARTS ARE PRESENT. READ INSTRUCTIONS CAREFULLY BEFORE STARTING INSTALLATION. ASSISTANCE IS RECOMMENDED.

1. Start the installation under the passenger front- side of the vehicle. Locate the front factory running board mounting location along the inner side of the body, **(Figure 1)**.
2. Slide (1) Plastic Retainer over each of the (3) factory mounting studs in the body panel, **(Figures 2 & 3)**. **IMPORTANT:** The Plastic Washers are designed to prevent corrosion between the aluminum body panel and the steel mounting brackets. **Do not install the Brackets without the Plastic Retainers.**
3. Select (1) Mounting Bracket. **NOTE:** All (4) Brackets are universal and will fit left or right side. Attach the Mounting Bracket to the (3) factory studs with (3) 8mm Flat Washers and (3) 8mm Nylon Lock Nuts, **(Figures 4 & 5)**. Leave brackets loose at this time.
4. Repeat **Steps 1—3** to install the remaining rear passenger side Bracket.
5. Carefully unwrap and select the passenger side Running Board. Slide (2) 6mm Double Bolt Plates into the bottom of the running board channel, **(Figure 6)**. Slide the Double Bolt Plates forward or back to line up with the (2) previously installed Brackets.
6. Hold the Running Board up to the vehicle at a slight angle and gently push it into position against the end of the Brackets. It may be necessary to loosen the Brackets to fit the Running Board between the Brackets and the body panel. Attach the Running Board to the Mounting Brackets with the included (4) 6mm Flat Washers, (4) 6mm Lock Washers and (4) 6mm Hex Nuts, **(Figures 7)**. Do not tighten hardware at this time.
7. Level and adjust the Running Board as desired and tighten all hardware.
8. Repeat **Steps 1—7** for the driver side Running Board installation.
9. Do periodic inspections to the installation to make sure that all hardware is secure and tight.

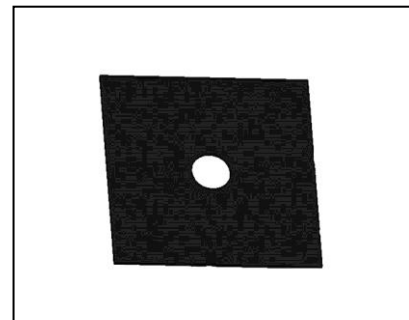
**P1 PLASTIC MOLDED RUNNING BOARDS
15-18 F150 SUPER CAB & 2017-2018 F25-350 SUPER DUTY SUPER CAB**

To protect your investment, wax this product after installing. Regular waxing is recommended to add a protective layer over the finish. Do not use any type of polish or wax that may contain abrasives that could damage the finish. Mild soap may be used also to clean the Running Board.

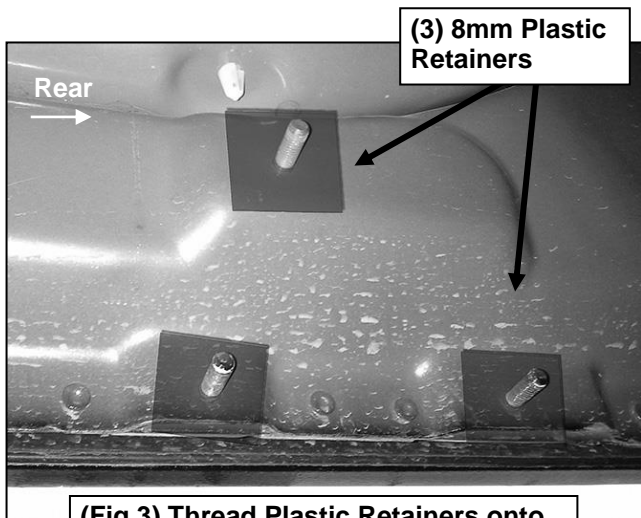
Passenger/right Side Installation Pictured



(Fig 1) Passenger side front mounting location

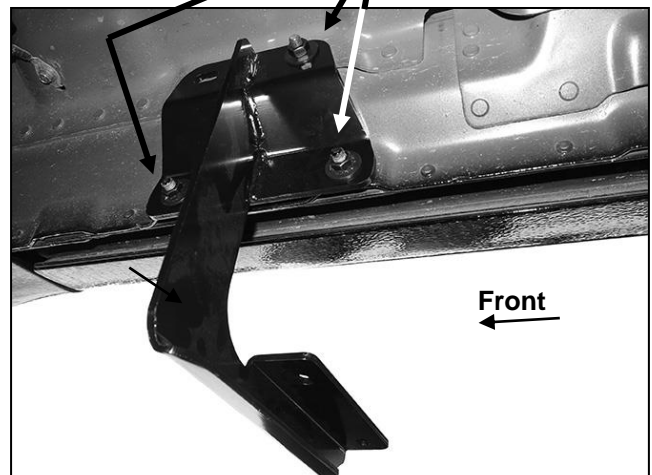


(Fig 2) 8mm Plastic Retainers



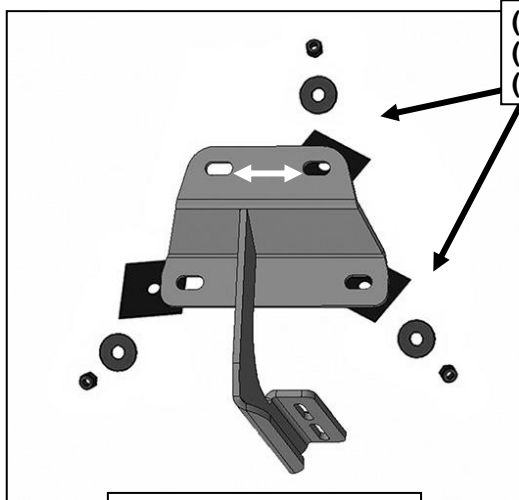
(Fig 3) Thread Plastic Retainers onto all mounting studs. Passenger side rear mounting location pictured

- (3) 8mm Plastic Retainers**
- (3) 8mm Flat Washers**
- (3) 8mm Nylon Lock Nuts**



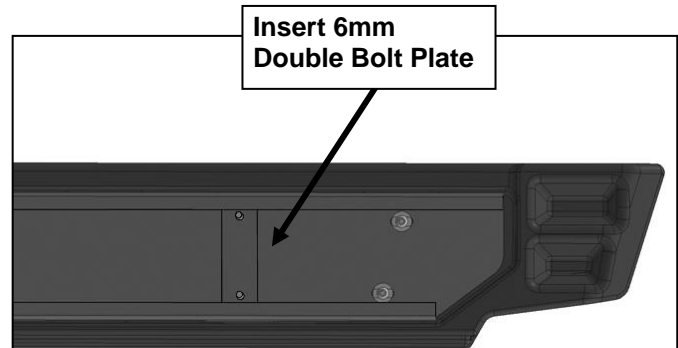
(Fig 4) Passenger side front Bracket installation

P1 PLASTIC MOLDED RUNNING BOARDS
15-18 F150 SUPER CAB & 2017-2018 F25-350 SUPER DUTY SUPER CAB



(Fig 5) Typical Bracket installation illustrated

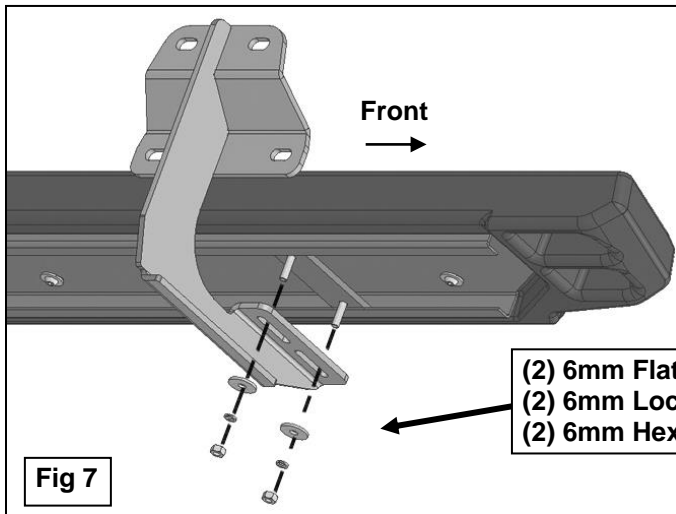
- (3) 8mm Plastic Retainers**
- (3) 8mm Flat Washers**
- (3) 8mm Nylon Lock Nuts**



Insert 6mm Double Bolt Plate

Front
→

Fig 6



Front
→

- (2) 6mm Flat Washers**
- (2) 6mm Lock Washers**
- (2) 6mm Hex Nuts**

Fig 7