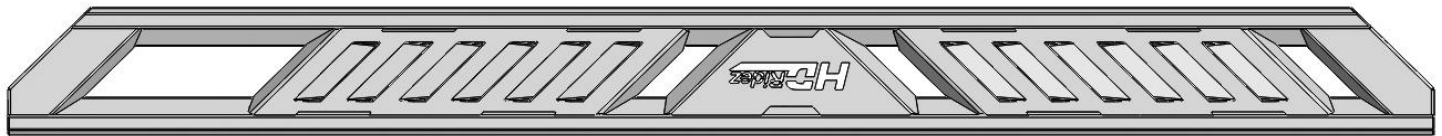


## INSTALLATION INSTRUCTIONS

### PARTS LIST:

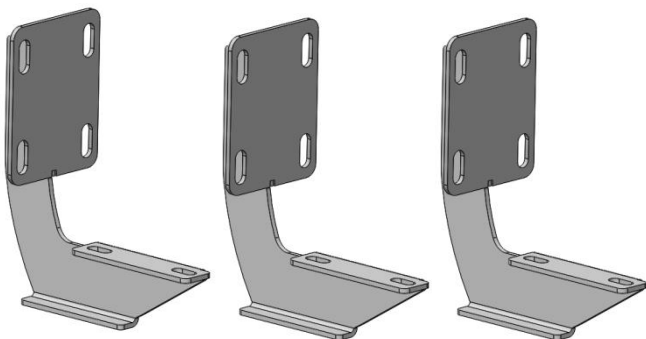
| Qty | Item Description                         | Qty | Item Description             |
|-----|--|-----|------------------------------|
| 1   | Driver/Left Side Running Board (85")     | 24  | 8-1.25mm x 30mm Hex Bolts    |
| 1   | Passenger/Right Side Running Board (85") | 36  | 8mm x 24mm x2mm Flat Washers |
| 3   | Driver/Left Side Mounting Bracket        | 24  | 8mm Lock Washers             |
| 3   | Passenger/Right Side Mounting Bracket    | 12  | 8mm Hex Nuts                 |
| 12  | 8-1.25mm x 25mm Combo Bolts              | 12  | 8mm Clip Nuts                |



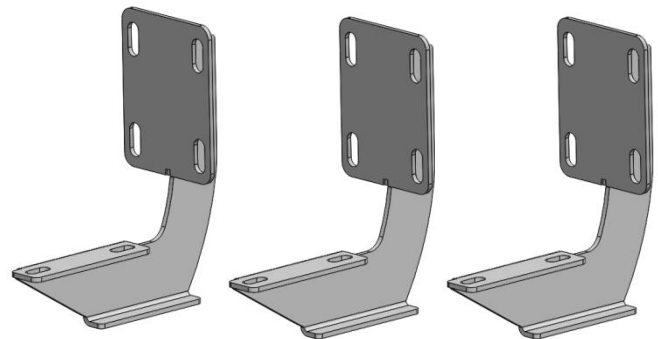
**Passenger/Right Running Board**



**Driver/Left Running Board**



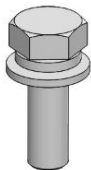
Driver/Left  
Mounting Bracket



Passenger/Right  
Mounting Bracket



Hex  
Bolt



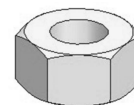
Combo  
Bolt



Lock  
Washer



Flat  
Washer

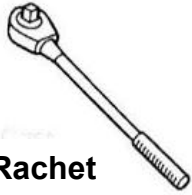


Hex Nut



Clip Nut

### TOOLS REQUIRED



Ratchet



13mm Socket



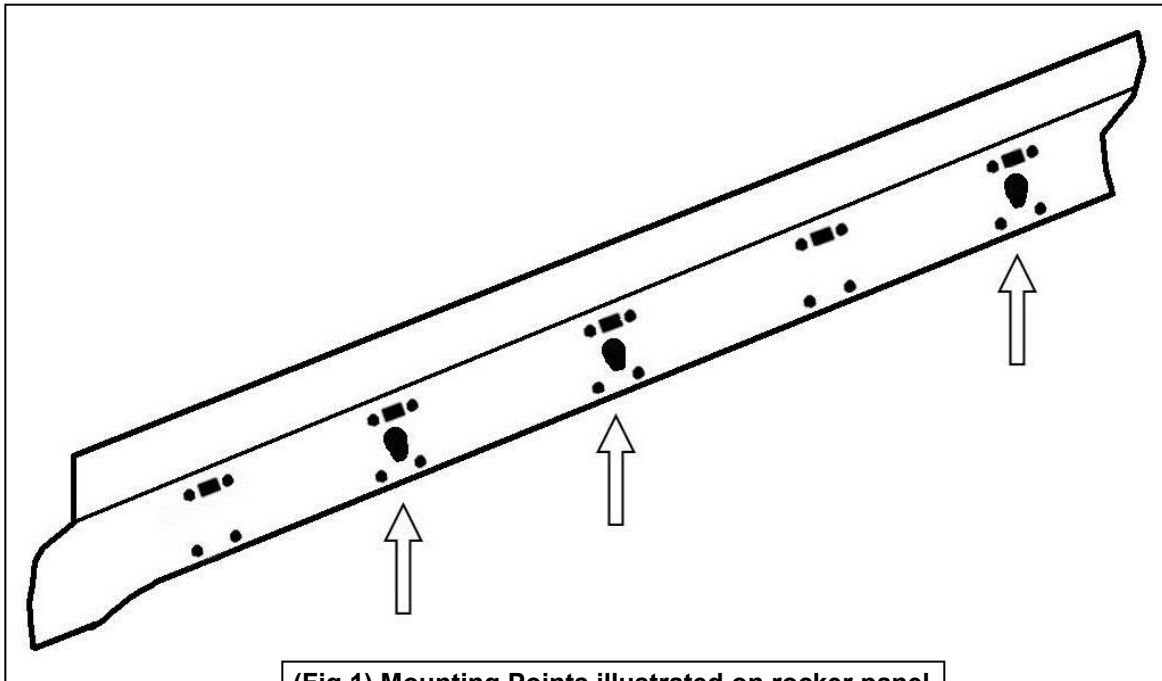
Extensions



Wrench

1

Follow (Fig 1 – 9) to attach Mounting Brackets to the Passenger/Right Side starting at Front. Ensure hardware is hand tightened. Repeat the following steps on the Driver/Left Side.



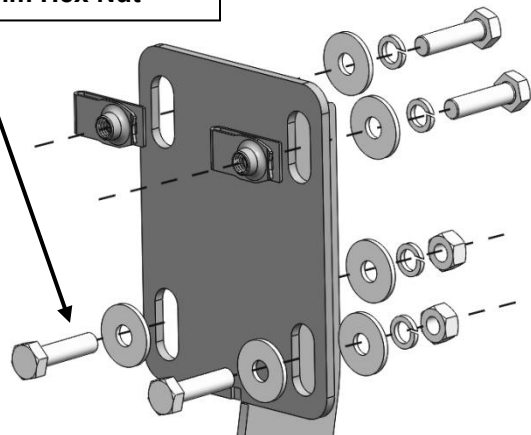
(Fig 1) Mounting Points illustrated on rocker panel



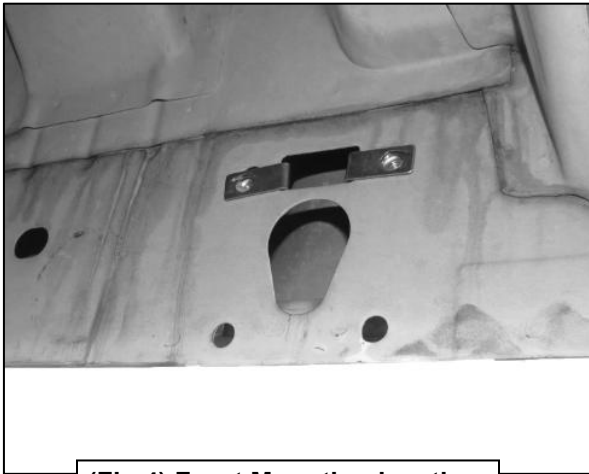
(Fig 2) Attach Clip nuts to mounting locations

(2) 8mm Hex Bolt  
(2) 8mm Lock Washer  
(4) 8mm Flat Washer  
(2) 8mm Hex Nut

(2) 8mm Hex Bolt  
(2) 8mm Lock Washer  
(2) 8mm Flat Washer  
(2) 8mm Clip Nuts



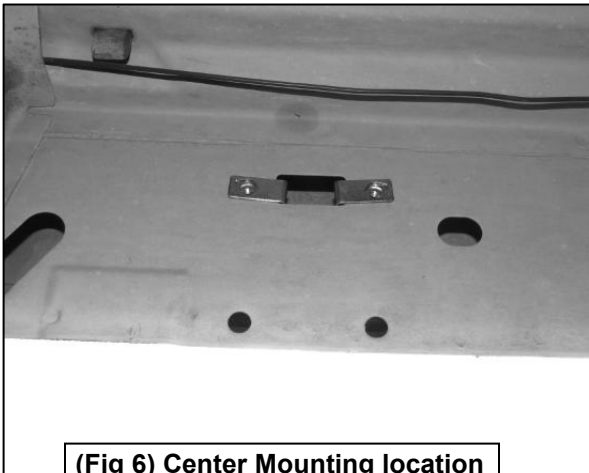
(Fig 3) Attach Mounting Brackets to mounting location



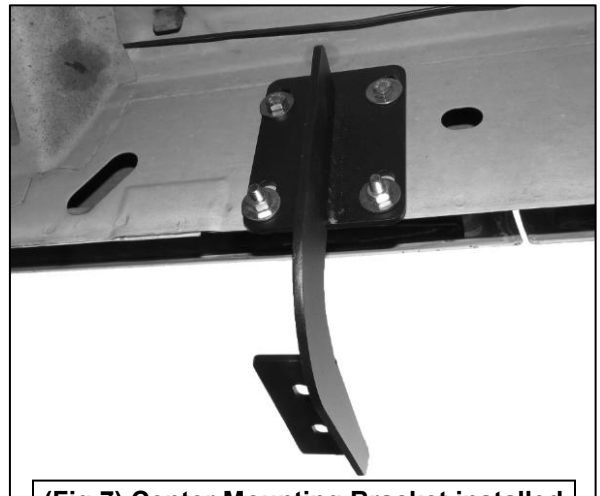
(Fig 4) Front Mounting location



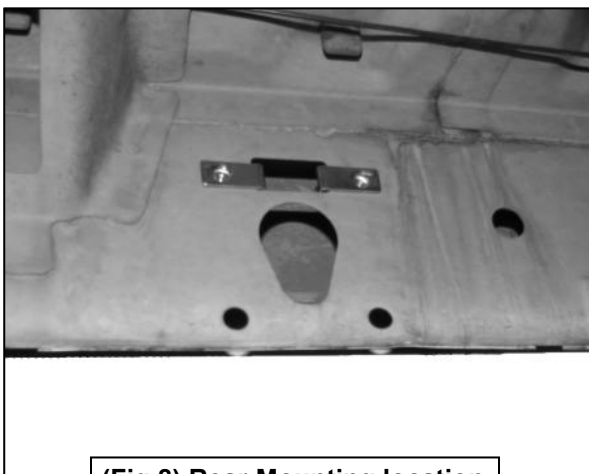
(Fig 5) Front Mounting Bracket installed



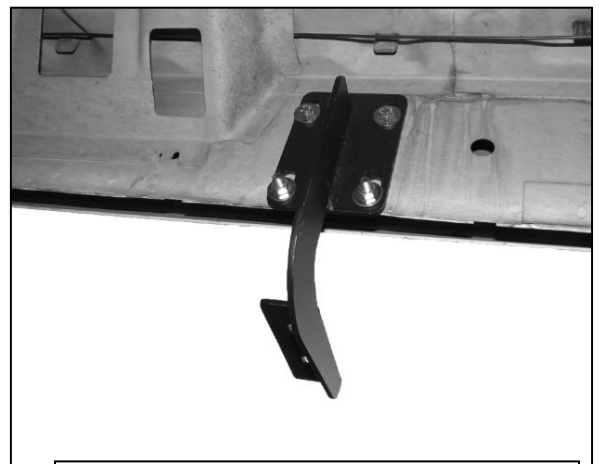
(Fig 6) Center Mounting location



(Fig 7) Center Mounting Bracket installed

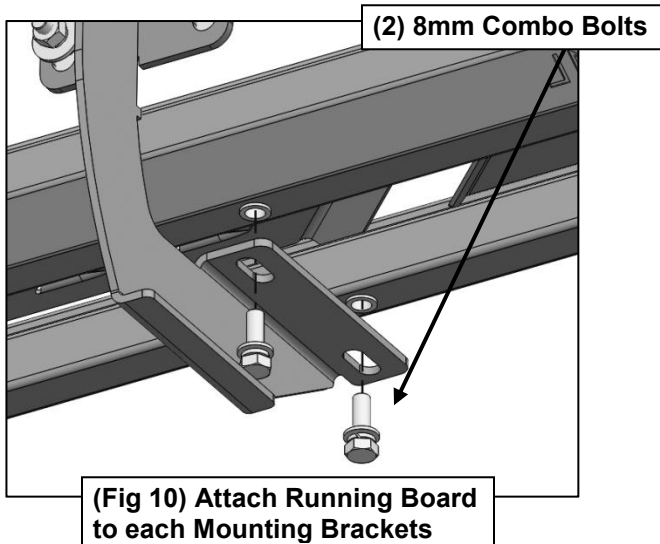


(Fig 8) Rear Mounting location



(Fig 9) Rear Mounting Bracket installed

- 2** Follow (Fig 10 – 11) to attach Running Board to Mounting Brackets on the Passenger/Right side. Ensure hardware is hand tightened. Repeat the following steps on the Driver/Left side.



- 3** Ensure Running Board is level, then tighten all hardware. Installation is complete. Do periodic inspections to the installation to make sure that all hardware is secure and tight.

