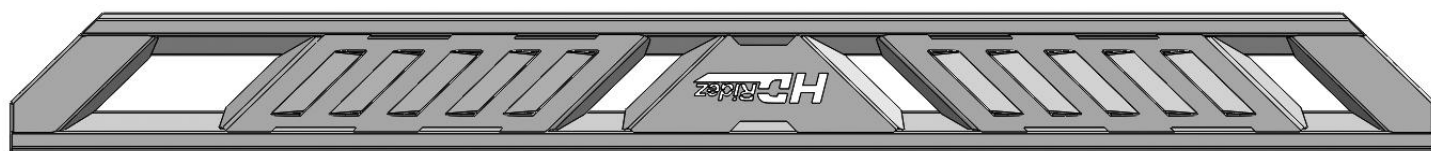


Installation Instructions

PARTS LIST:

Qty	Item Description	Qty	Item Description
1	Driver/Left Side Running Board(76")	12	8-1.25mm x 25mm Combo Bolts
1	Passenger/Right Side Running Board(76")	12	10-1.5mm x 25mm Hex Bolts
2	Front Mounting Brackets	12	10mm x 27mm x 3mm Flat Washers
4	Center & Rear Mounting Brackets	12	10mm Lock Washers



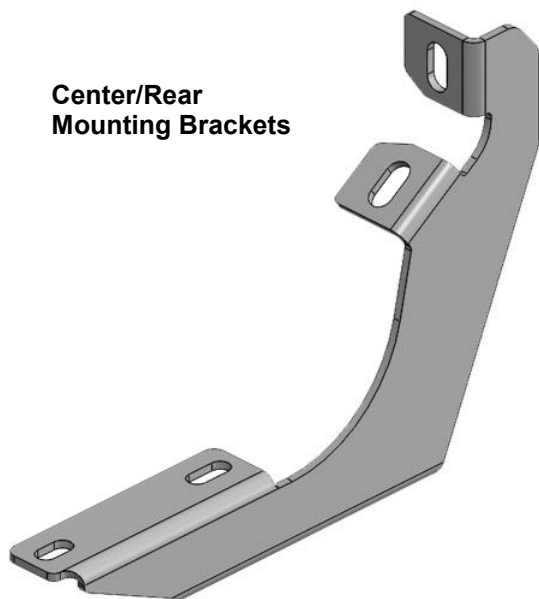
Front
←

Passenger/Right Running Board

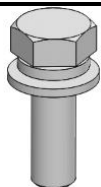
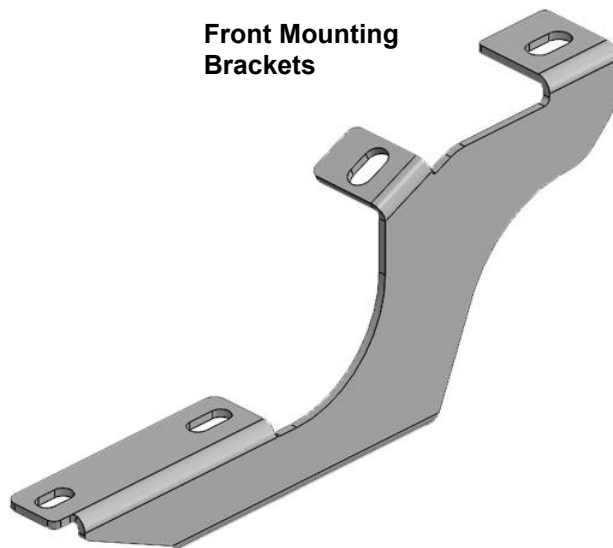


Driver/Left Running Board

Center/Rear
Mounting Brackets



Front Mounting
Brackets



Combo
Bolt



Lock
Washer



Flat
Washer



Hex Bolt

TOOLS REQUIRED



Ratchet



Socket



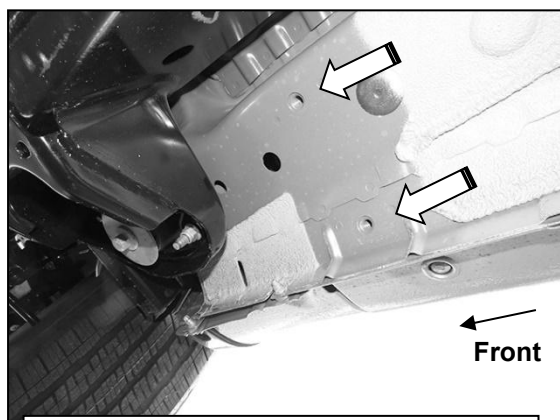
Extensions



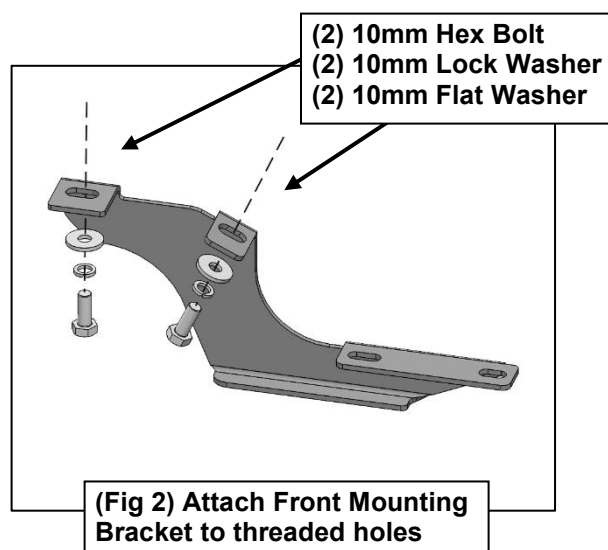
Wrench

1

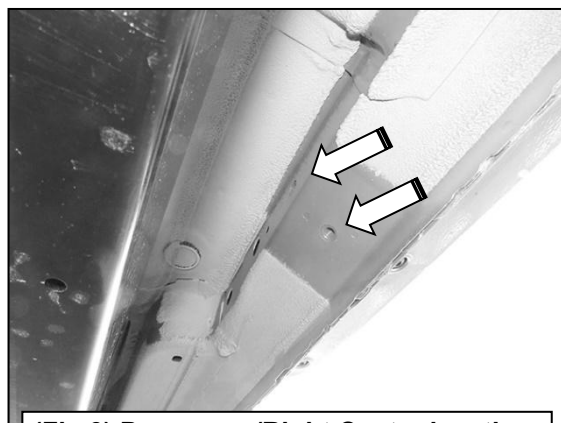
Follow (Fig 1 – 5) to attach Mounting Brackets to the Passenger Side. Repeat the following steps on the Driver Side. Ensure hardware is hand tightened at this point.



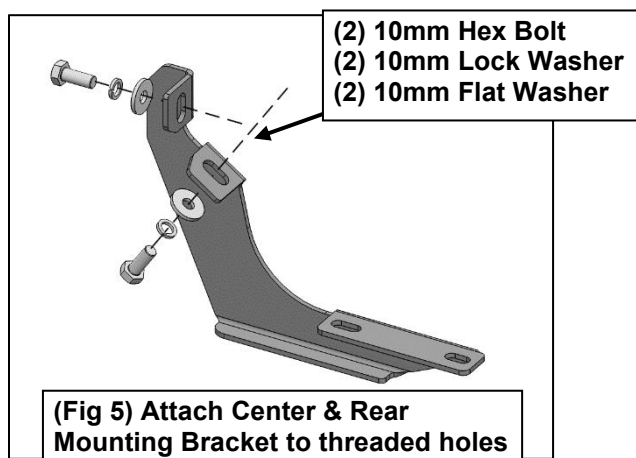
(Fig 1) Passenger/Right Front location



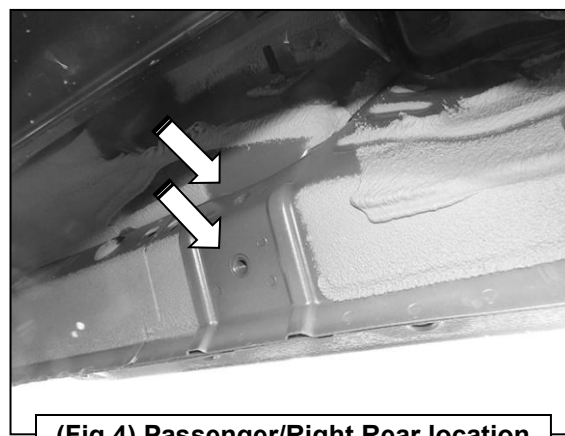
(Fig 2) Attach Front Mounting Bracket to threaded holes



(Fig 3) Passenger/Right Center location

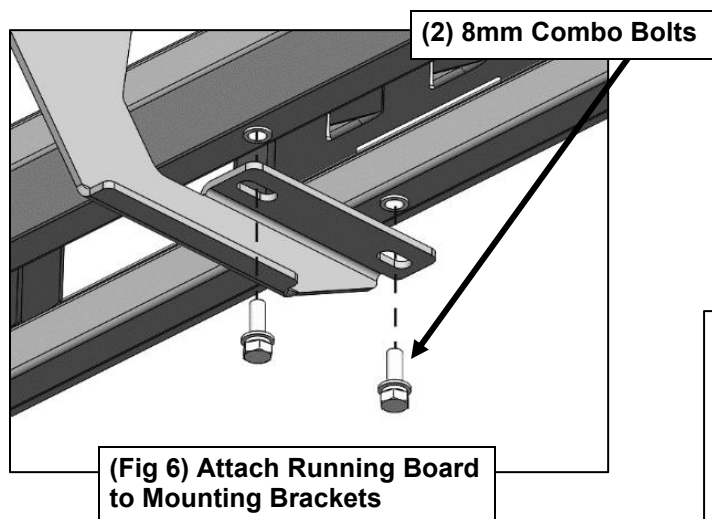


(Fig 5) Attach Center & Rear Mounting Bracket to threaded holes



(Fig 4) Passenger/Right Rear location

- 2** Follow (Fig 6 – 7) to attach Passenger/Right Running Board to Mounting Brackets. Repeat the following steps on the Driver/Left side. Ensure hardware is hand tightened at this point.



- 3** Ensure Running Board is level, then tighten all hardware. Installation is complete. Do periodic inspections to the installation to make sure that all hardware is secure and tight.

