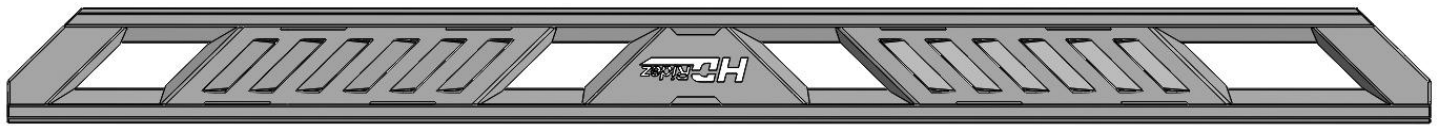


Installation Instructions

PARTS LIST:

Qty	Item Description	Qty	Item Description
1	Driver/Left Side Running Board	10	8mm Hex Nuts
1	Passenger/Right Side Running Board	10	8mm x 28mm x 3mm Flat Washers
2	Driver/Left Side Front & Rear Mounting Brackets	20	8mm x 24mm x 2mm Flat Washers
2	Passenger/Right Side Front & Rear Mounting Brackets	10	8-1.25mm x 30mm Hex Bolts
1	Driver/Left Side Center Mounting Brackets	10	8-1.25mm x 25mm Hex Bolts
1	Passenger/Right Side Center Mounting Brackets	20	8mm Lock Washers
12	8-1.25mm x 25mm Combo Bolts		



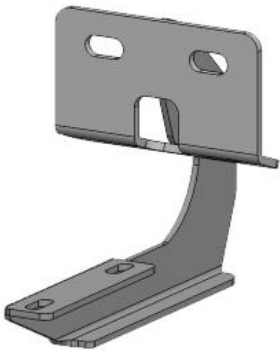
Driver/Left Running Board



Front



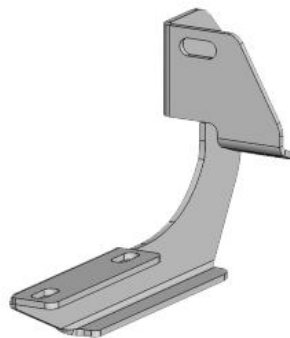
Passenger/Right Running Board



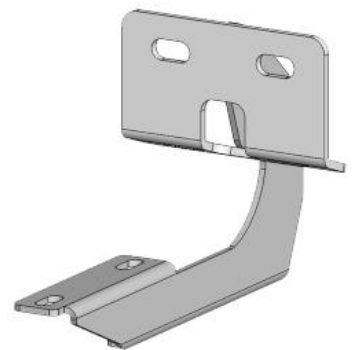
Driver/Left Front
& Rear Mounting
Bracket



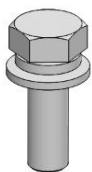
Driver/Left Center
Mounting Bracket



Passenger/Right
Front & Rear
Mounting Bracket



Passenger/Right
Center Mounting
Bracket



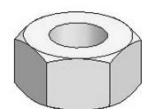
Combo
Bolt



Lock
Washer

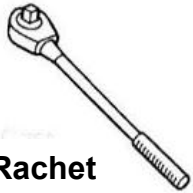


Flat
Washer



Hex Nut

TOOLS REQUIRED



Ratchet



13mm Socket



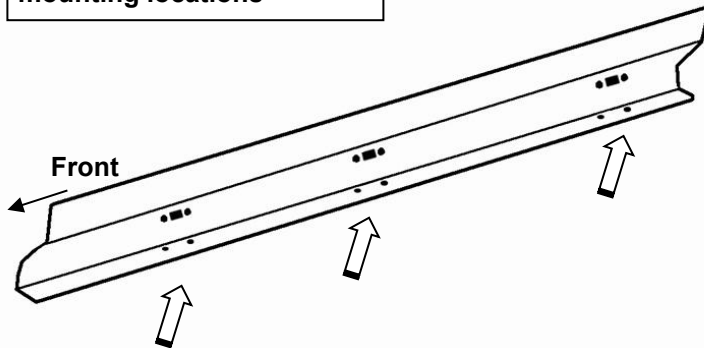
Extensions



Wrench

- 1 Follow (Fig 1 – 3) to locate and prepare the Passenger/Right mounting locations for Mounting Brackets. Repeat the following steps with Driver/Left side.

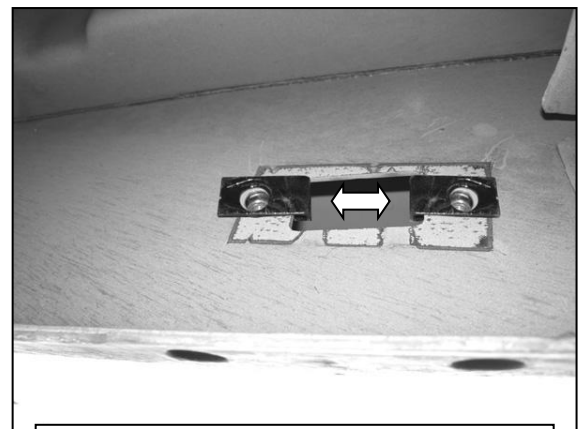
Locate holes through pinch weld (arrows) to determine mounting locations



(Fig 1) Passenger/right inner body panel illustrated



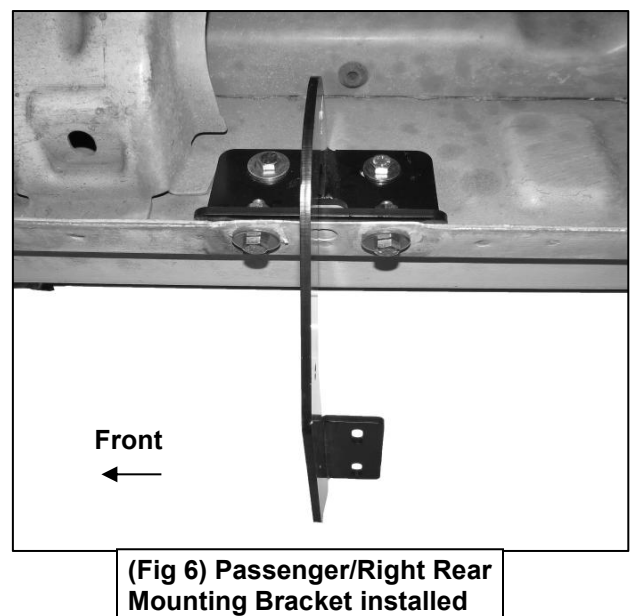
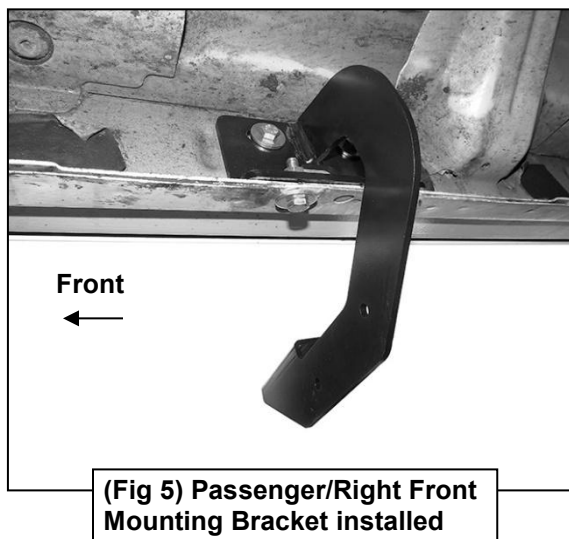
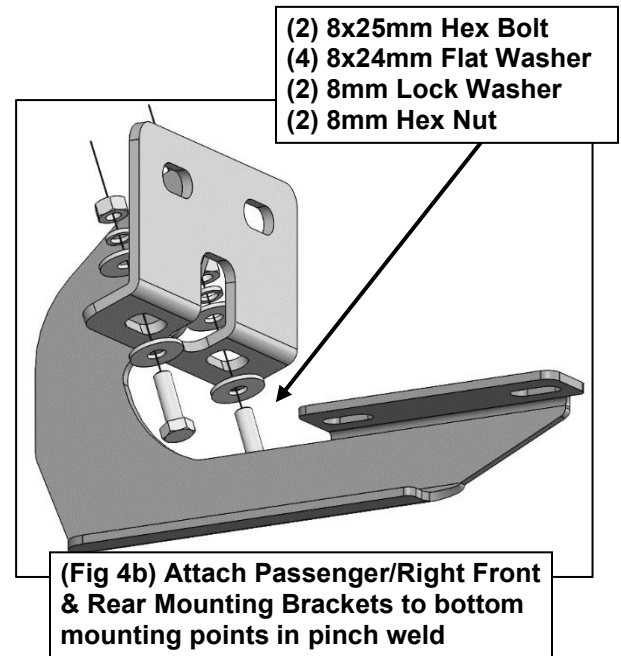
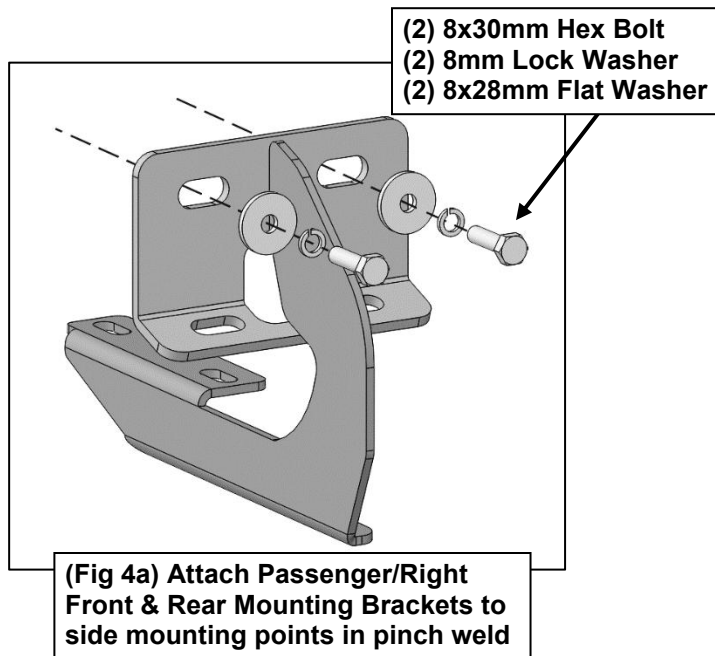
(Fig 3) Slide 8mm Clip Nuts over holes



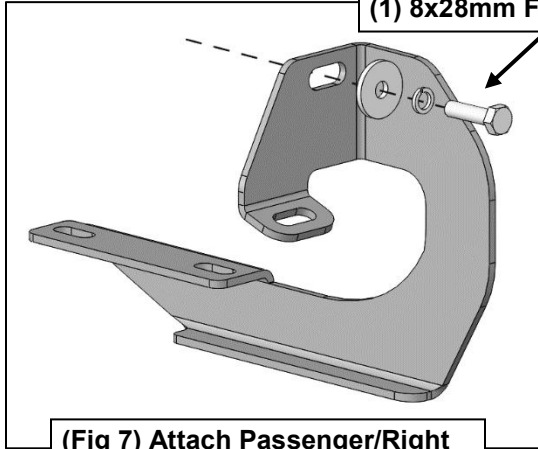
(Fig 2) Slide 8mm Clip Nuts over holes

2

Follow (Fig 4 – 9) to attach Passenger/Right side Mounting Brackets, then attach Running Board to Mounting Brackets. Repeat with the following steps on the Driver/Left side.

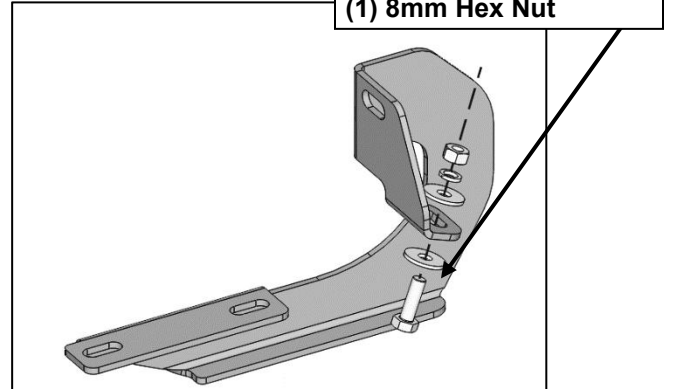


- (1) 8x30mm Hex Bolt
- (1) 8mm Lock Washer
- (1) 8x28mm Flat Washer



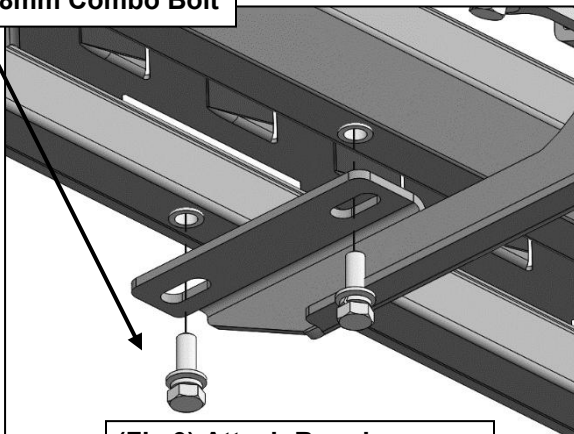
(Fig 7) Attach Passenger/Right Center Mounting Bracket to side mounting points in pinch weld

- (1) 8x25mm Hex Bolt
- (2) 8x24mm Flat Washer
- (1) 8mm Lock Washer
- (1) 8mm Hex Nut



(Fig 8) Attach Passenger/Right Center Mounting Bracket to bottom mounting points in pinch weld

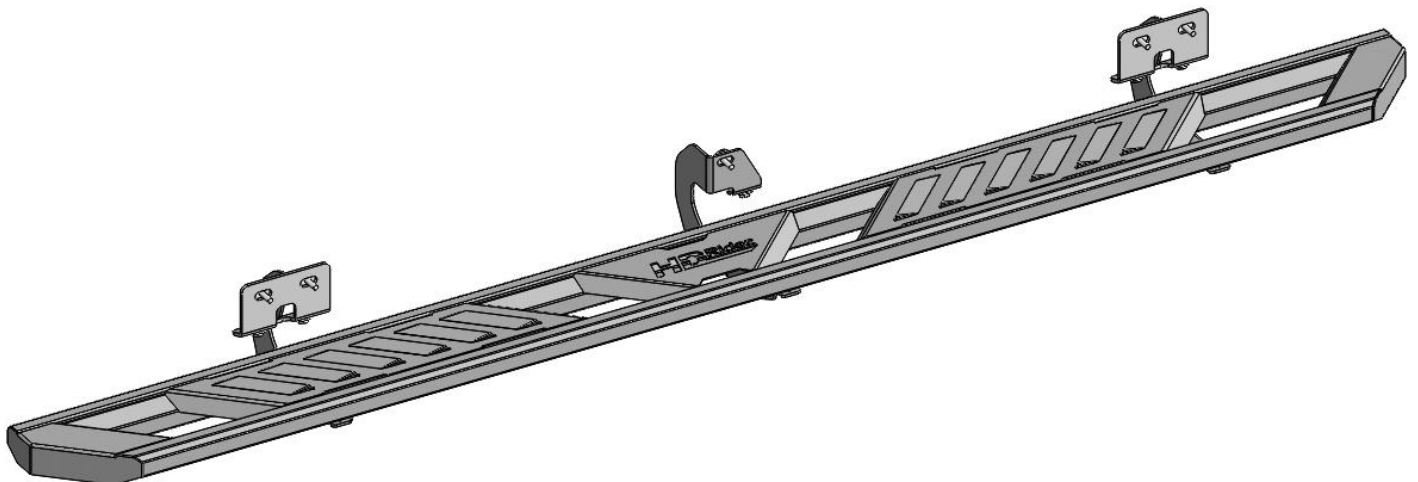
- (2) 8mm Combo Bolt



(Fig 9) Attach Running Board to Mounting Brackets

3

Ensure Running Board is level, then tighten all hardware. Installation is complete. Do periodic inspections to the installation to make sure that all hardware is secure and tight.



Completed Installation