

Installation Instructions

PARTS LIST:

Qty	Item Description	Qty	Item Description
1	Driver/Left Side Running Board (85")	2	Driver/Left Center & Rear Mounting Bracket
1	Passenger/Right Side Running Board (85")	2	Passenger/Right Center & Rear Mounting Bracket
6	Universal Support Brackets	18	8mm Plastic Retainers
4	Center & Rear Mounting Brackets	12	8-1.25mm x 25mm Combo Bolts
1	Driver/Left Front Mounting Bracket	24	8mm x 24mm x 2mm Flat Washers
1	Passenger/Right Front Mounting Bracket	24	8mm Nylon Lock Nuts

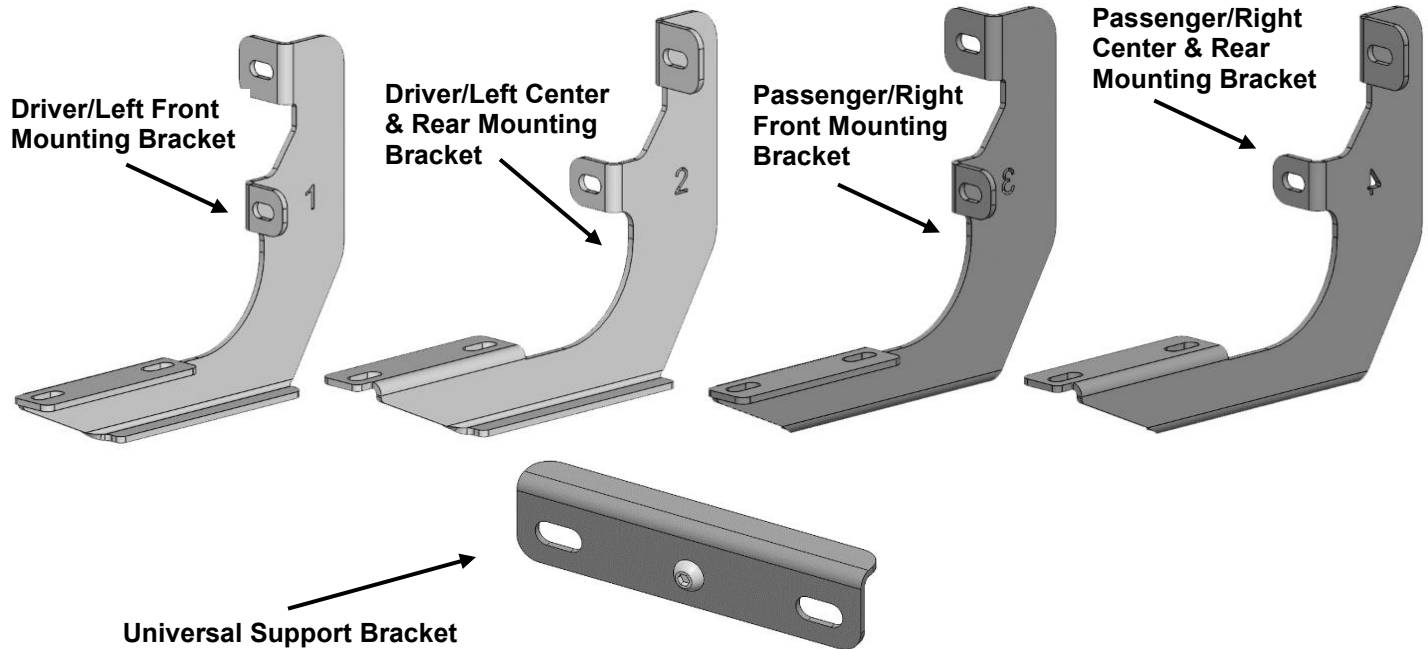


Driver/Left Running Board

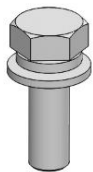
Front
→



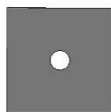
Passenger/Right Running Board



Universal Support Bracket



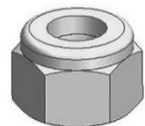
Combo
Bolt



Plastic
Retainer



Flat
Washer

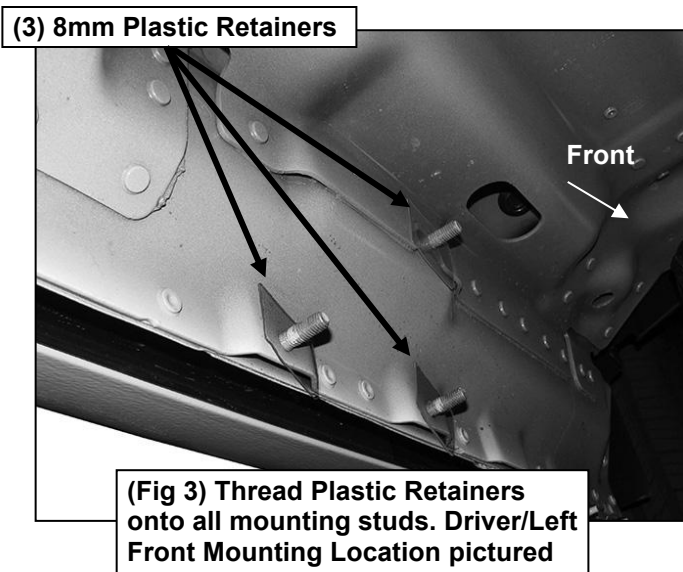
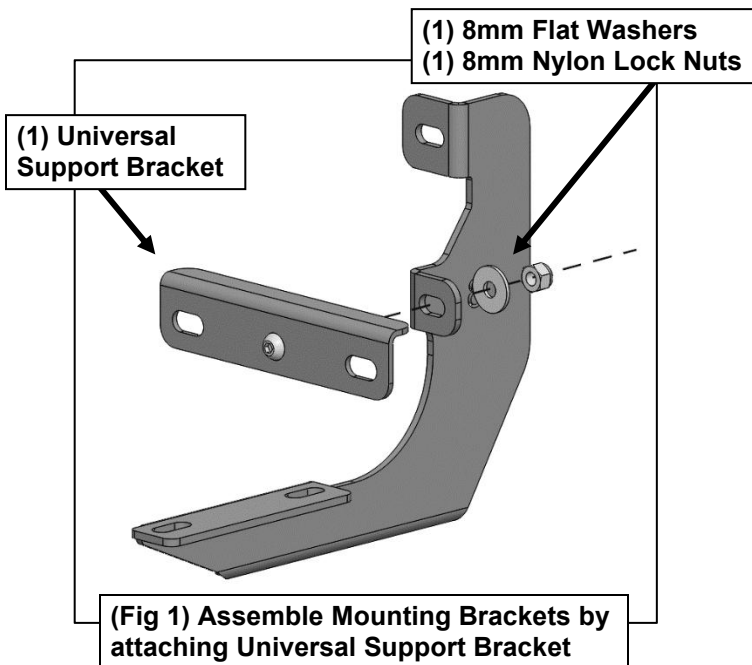


Nylon
Lock Nut

TOOLS REQUIRED



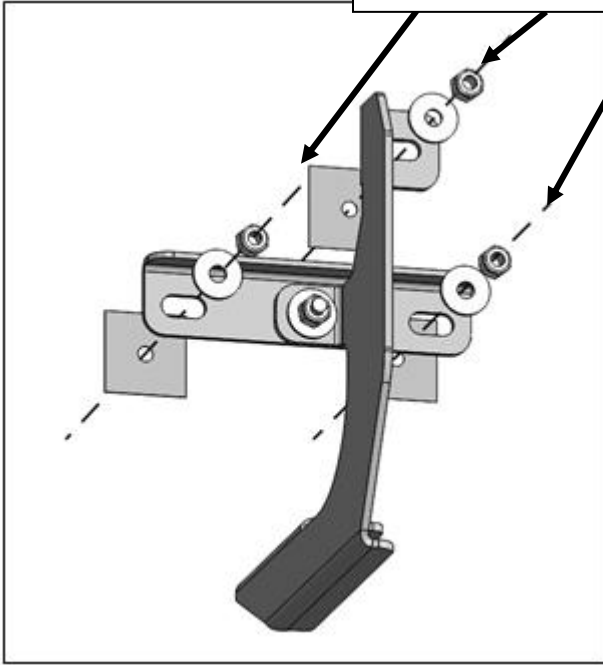
- Follow (Fig 1 – 3) to assemble Mounting Brackets and attach plastic retainers to Driver/Left Mounting Locations. Repeat the following steps with Passenger/Right side.



2

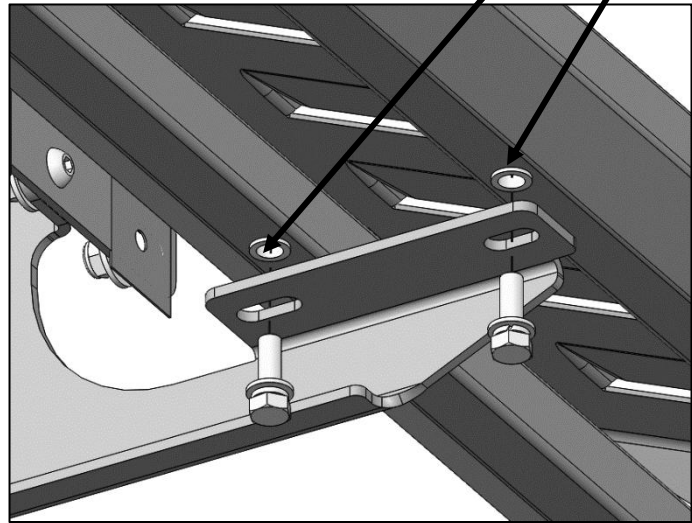
Follow (Fig 4 – 5) to attach Mounting Brackets to mounting studs, then attach Running Board to Brackets. Ensure hardware is hand tightened at this point.

(3) 8mm Flat Washers
(3) 8mm Nylon Lock Nuts



(Fig 4) Driver/left side Bracket installed

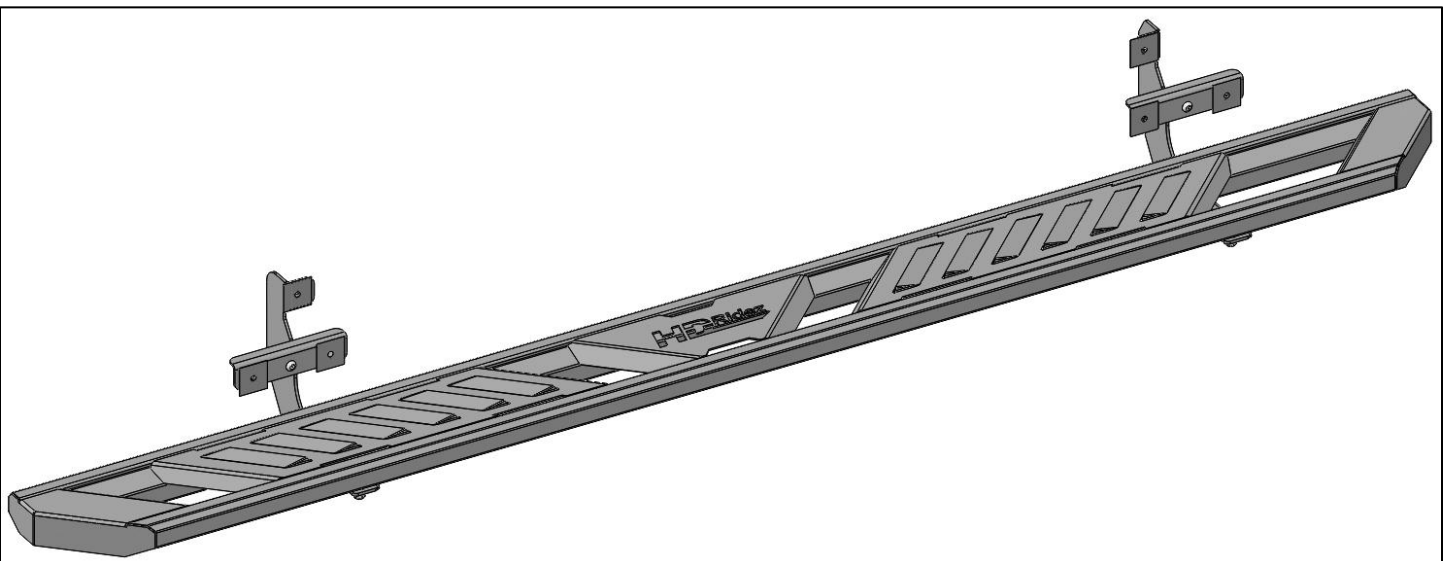
(2) 8mm Combo Bolt



(Fig 5) Attach Running Board to Mounting Brackets

3

Ensure Running Board is level, then tighten all hardware. Installation is complete. Do periodic inspections to the installation to make sure that all hardware is secure and tight.



Completed Installation