

PARTS LIST:

Qty	Item Description	Qty	Item Description
1	Driver/Left Side Running Board	16	8mm x 16mm x 1.6mm Flat Washers
1	Passenger/Right Side Running Board	20	8mm x 24mm x 2mm Flat Washers
4	Front & Rear Mounting Bracket Component (1)	8	8mm x 1.25mm x 25mm Hex Bolts
4	Front & Rear Mounting Bracket Component (2)	12	8mm x 1.25mm x 25mm Combo Bolts
2	Center Mounting Brackets	28	8mm x 1.25mm Nylon Lock Nuts
2	Center Mounting Bracket Component		

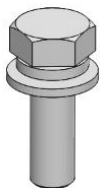
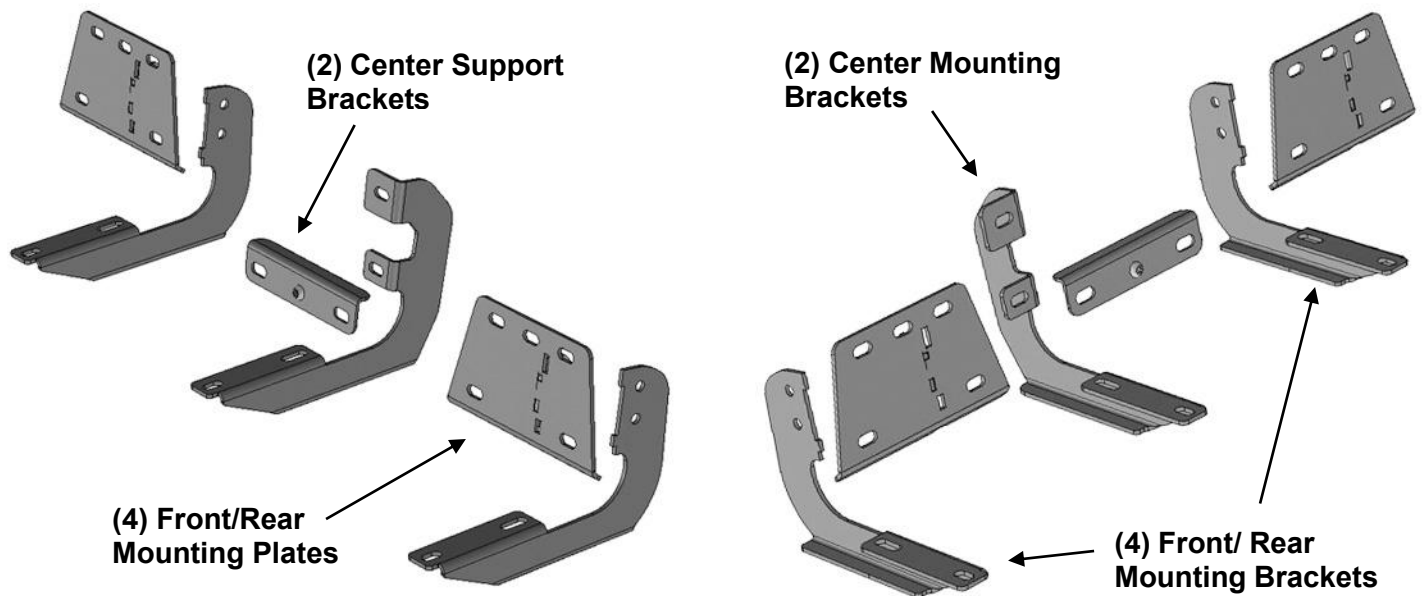


Passenger/Right Running Board

←
Front



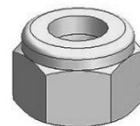
Driver/Left Running Board



Combo Bolt



Flat Washer



Nylon Lock Nut

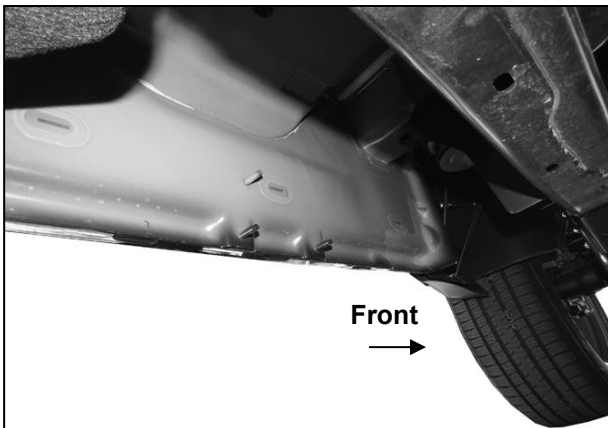


Hex Bolt

TOOLS REQUIRED

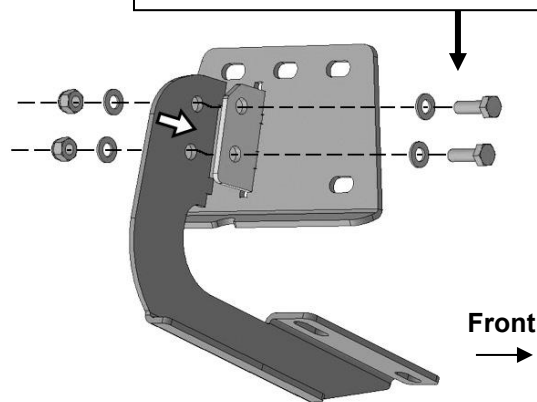


- 1** Follow (Fig 1 – 10) to attach the Mounting Brackets to the Driver Side. Repeat the following steps on the Passenger Side. Ensure hardware is hand tightened at this point.



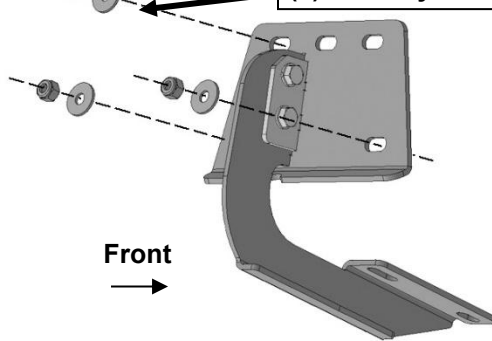
(Fig 1) Driver/left front mounting location

- (2) 8mm x 25mm Hex Bolts
(4) 8mm x 16mm Small Flat Washers
(2) 8mm Nylon Lock Nuts

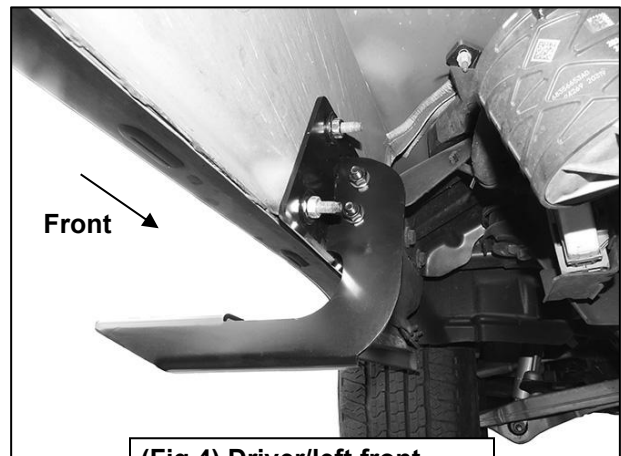


(Fig 2) Attach (1) front/rear Mounting Bracket to the back of (1) front/rear Mounting Plate

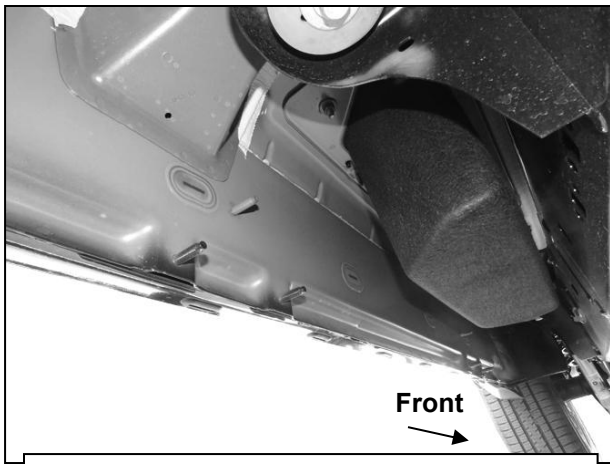
- (3) 8mm x 24mm STD Flat Washers
(3) 8mm Nylon Lock Nuts



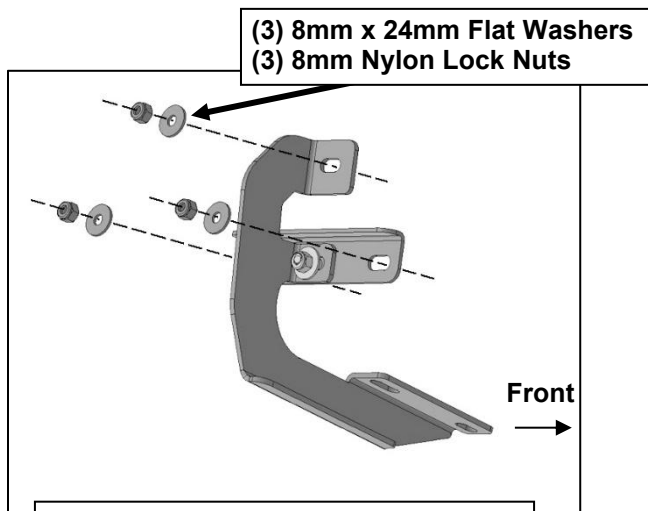
(Fig 3) Attach the front/rear Mounting Bracket assembly to the (3) threaded studs in the front mounting location



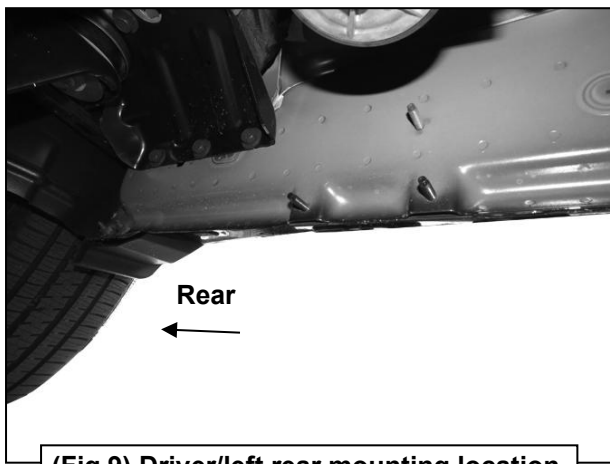
(Fig 4) Driver/left front Bracket assembly installed



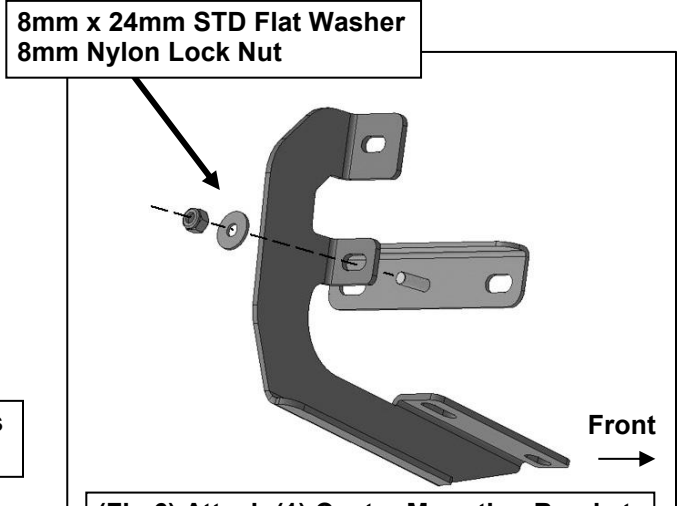
(Fig 5) Driver/left center mounting location



(Fig 7) Attach the center Mounting Bracket assembly to the (3) threaded studs in the center mounting location



(Fig 9) Driver/left rear mounting location



(Fig 6) Attach (1) Center Mounting Bracket to the threaded stud in (1) Support Bracket

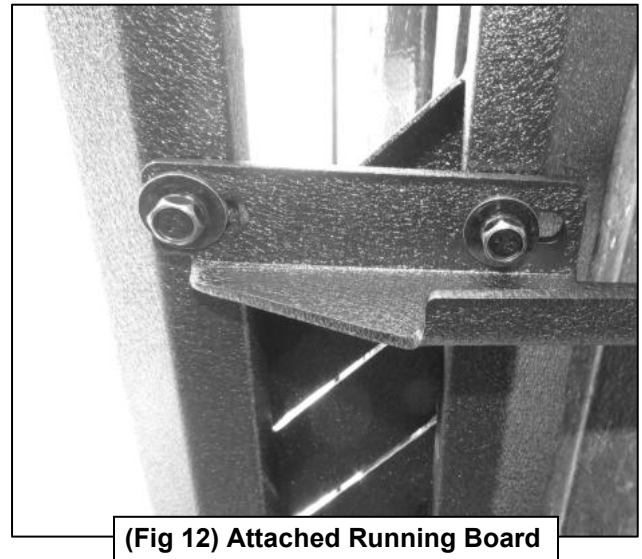
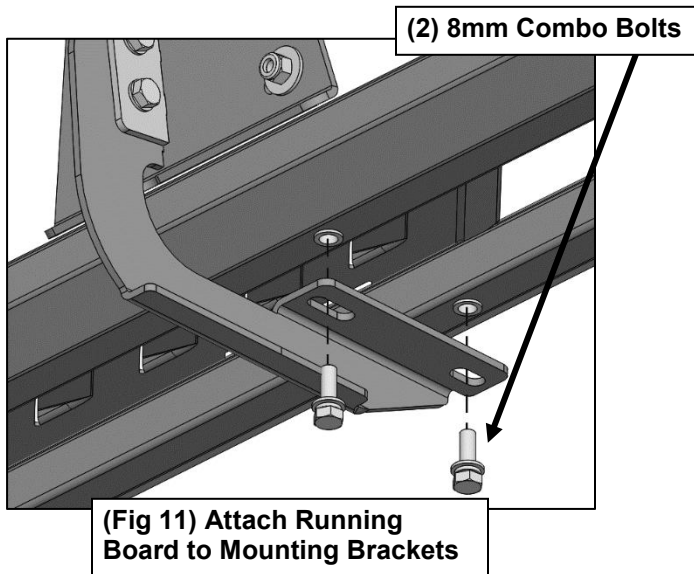


(Fig 8) Driver/left center Mounting Bracket assembly installed



(Fig 10) Assemble and attach (1) front/rear Bracket Assembly to the rear mounting location (also see Figures 2 & 3)

- 2** Follow (Fig 11 – 12) to attach Passenger/Right Running Board to Mounting Brackets. Repeat the following steps on the Driver/Left side. Ensure hardware is hand tightened at this point.



- 3** Ensure Running Board is level, then tighten all hardware. Installation is complete. Do periodic inspections to the installation to make sure that all hardware is secure and tight.

