

Installation Instructions

PARTS LIST:

Qty	Item Description	Qty	Item Description
2	Running Boards	12	8mm x 30mm Hex Bolts
2	Driver/Left Mounting Brackets	16	8mm x 24mm OD x 2mm Flat Washers
2	Passenger/Right Mounting Brackets	8	8mm Lock Washers
2	Driver/Left Support Brackets	4	8mm Hex Nuts
2	Passenger/Right Support Brackets	4	8mm Nylon Lock Nuts
8	8-1.25mm x 25mm Combo Bolts	8	6mm x 25mm Hex Bolts
4	8mm x 30mm Bolt-Nut Plates	16	6mm x 22mm OD x 2mm Flat Washers
4	8mm Plastic Retainers	8	6mm Nylon Lock Nuts



Front
←

Running Boards

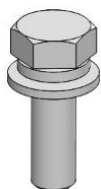
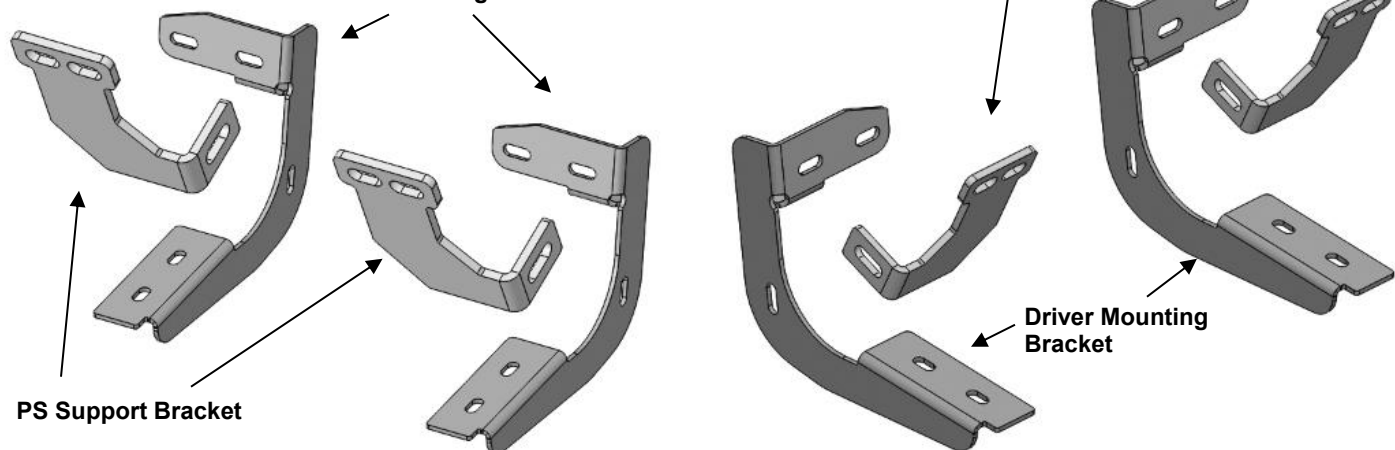


DS Support Bracket

Passenger
Mounting Bracket

Driver Mounting
Bracket

PS Support Bracket



Hex Nut



Lock
Washer



Flat
Washer



Hex Bolt

TOOLS REQUIRED



Ratchet



Sockets



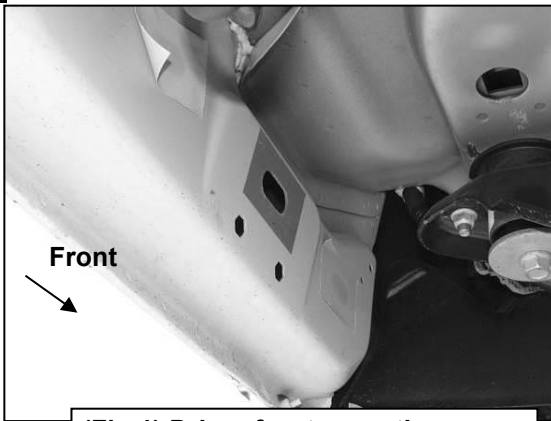
Extensions



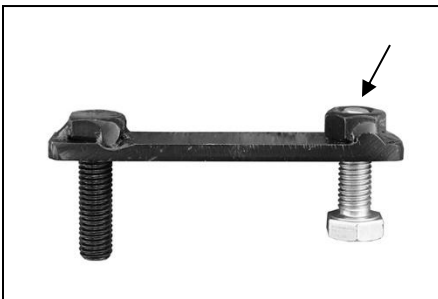
Wrench

1

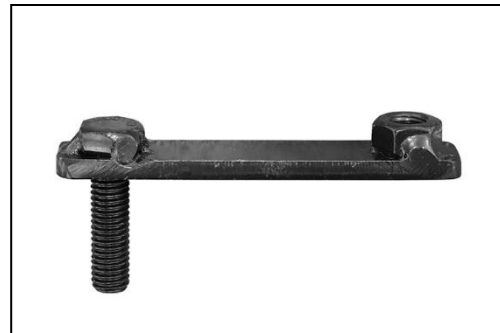
Follow (Fig 1 – 10) to attach Mounting Brackets to the Passenger Side. Repeat the following on the Driver Side. Ensure hardware is hand tightened at this point.



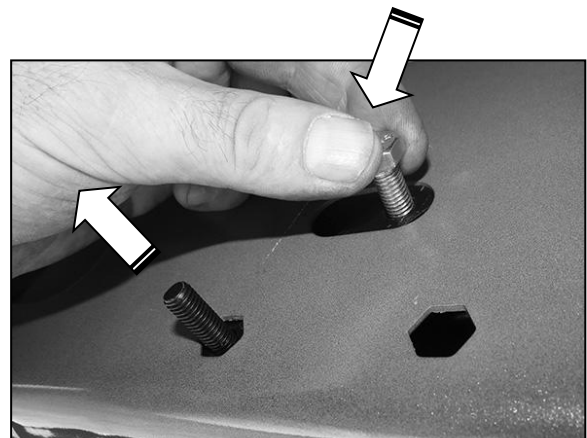
(Fig 1) Driver front mounting location (No factory holes in pinch weld 2009-2012 models)



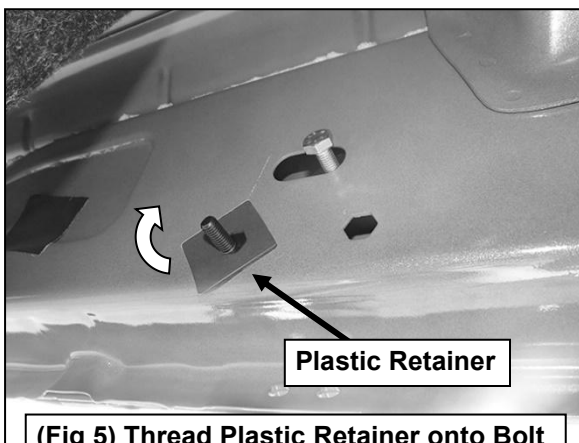
(Fig 3) Thread (1) 8mm Hex Bolt into the nut on the plate. Stop when bolt reaches end of nut as pictured



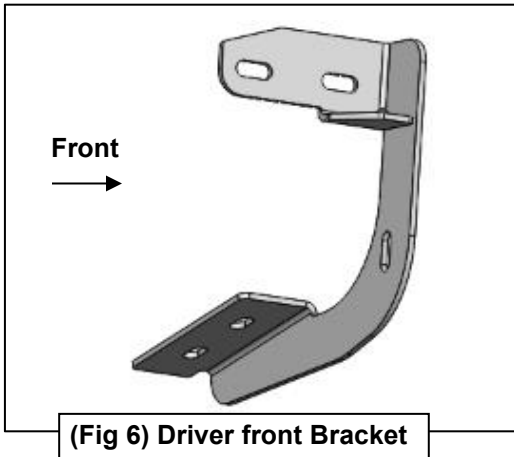
(Fig 2) 8mm Bolt-8mm Nut Plate, NOTE: 8mm Bolt-Nut Plate is not required on models with threaded inserts



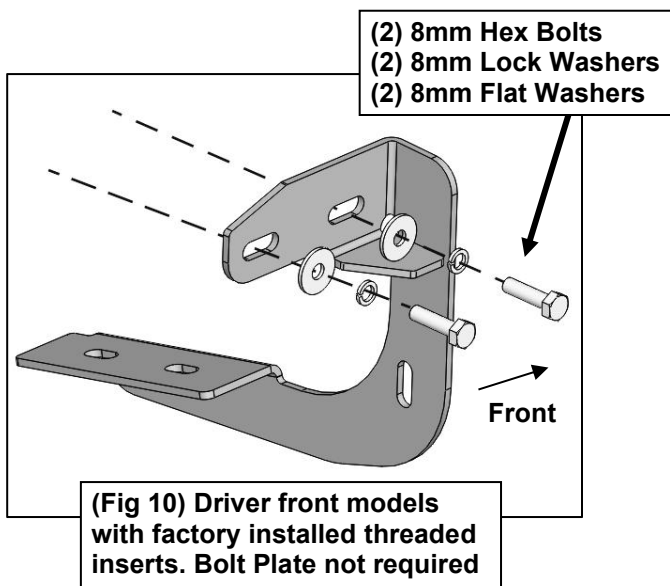
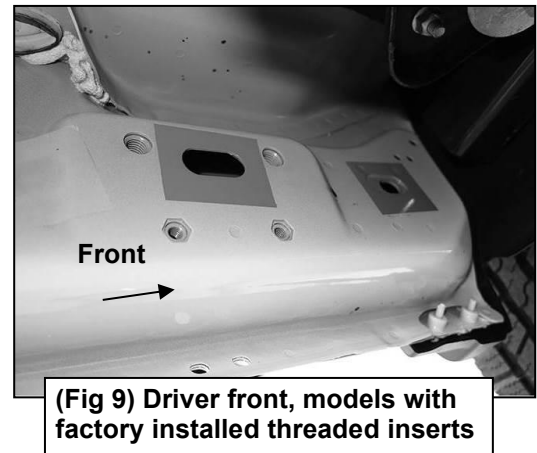
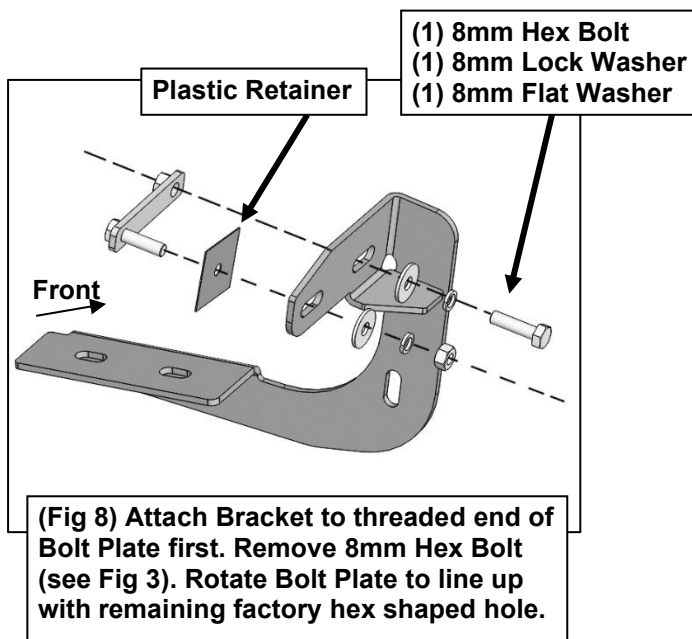
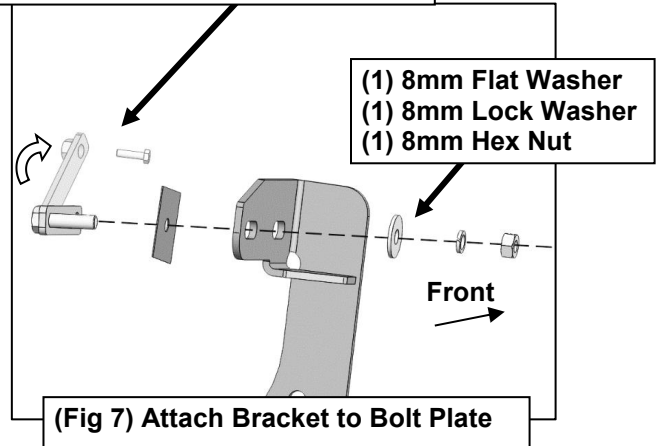
(Fig 4) Use the loose Hex Bolt as a handle. Insert the Bolt Plate into the oval hole and feed the threaded end out either factory hex shaped hole. IMPORTANT: Do not let go of the hex bolt until after Plastic Retainer has been threaded onto bolt (Fig 5)



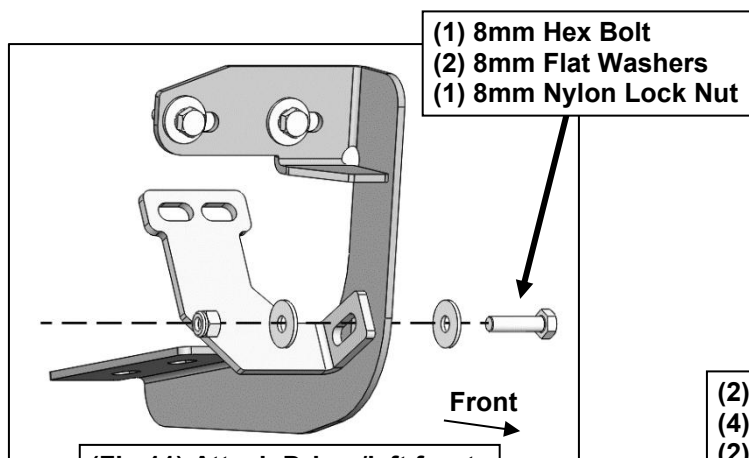
(Fig 5) Thread Plastic Retainer onto Bolt Plate to hold Bolt Plate in position.



Remove Hex Bolt, rotate Bolt/Nut Plate to line up threaded nut with body panel and Mounting Bracket (see arrow)



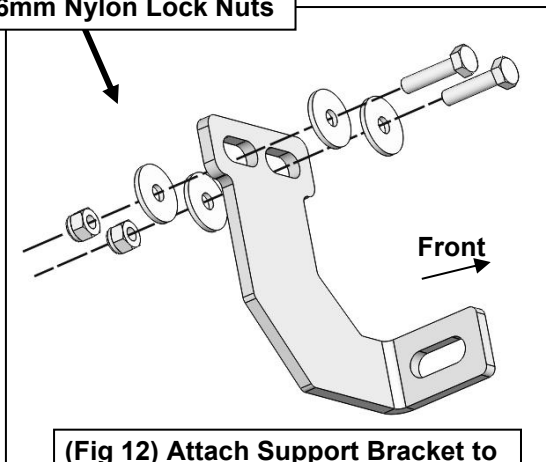
- 2** Follow (Fig 11 – 15) to attach Support Bracket to Mounting Bracket and pinch trim on Passenger Side. Repeat the following steps on the Driver Side. Ensure hardware is hand tightened.



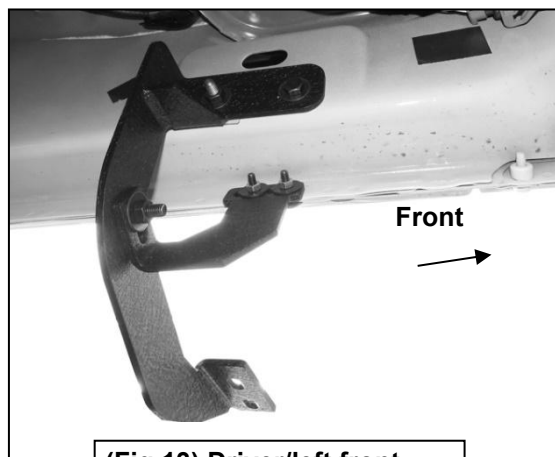
(Fig 11) Attach Driver/left front Support Bracket to front facing side of Mounting Bracket

IMPORTANT: 2009-2012 models without holes in pinch weld will require drilling 1/4" holes through pinch weld to attach Support Brackets. Do complete installation of Running Board first and level Running Board before drilling holes for Support Brackets.

- (2) 6mm Hex Bolts
 (4) 6mm Flat Washers
 (2) 6mm Nylon Lock Nuts



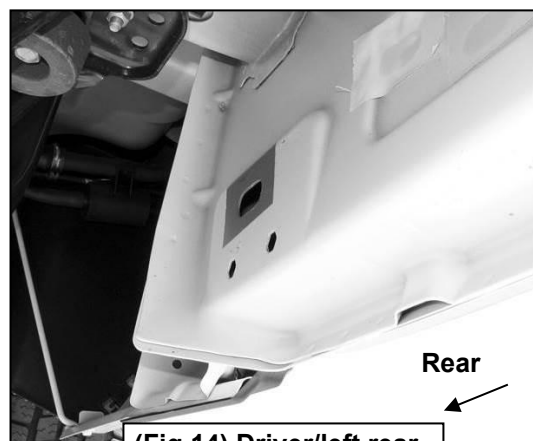
(Fig 12) Attach Support Bracket to back of pinch weld (models with factory holes in pinch weld only)



(Fig 13) Driver/left front Brackets attached to body panel and pinch weld



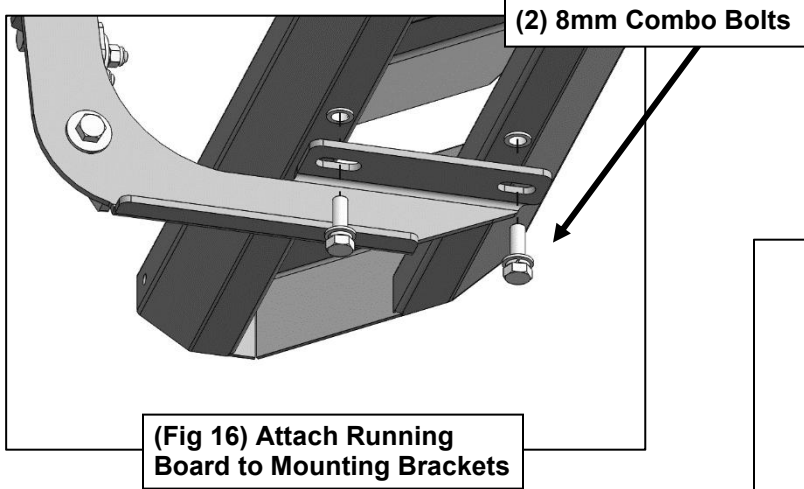
(Fig 15) Driver/left rear Brackets attached to body panel and pinch weld



(Fig 14) Driver/left rear mounting location

3

Follow (Fig 16 – 17) to attach Passenger/Right Running Board to Mounting Brackets. Repeat with Driver/Left Running Board. Ensure hardware is hand tightened.



4

Ensure Running Board is level, then tighten all hardware. Installation is complete. Do periodic inspections to the installation to make sure that all hardware is secure and tight.

