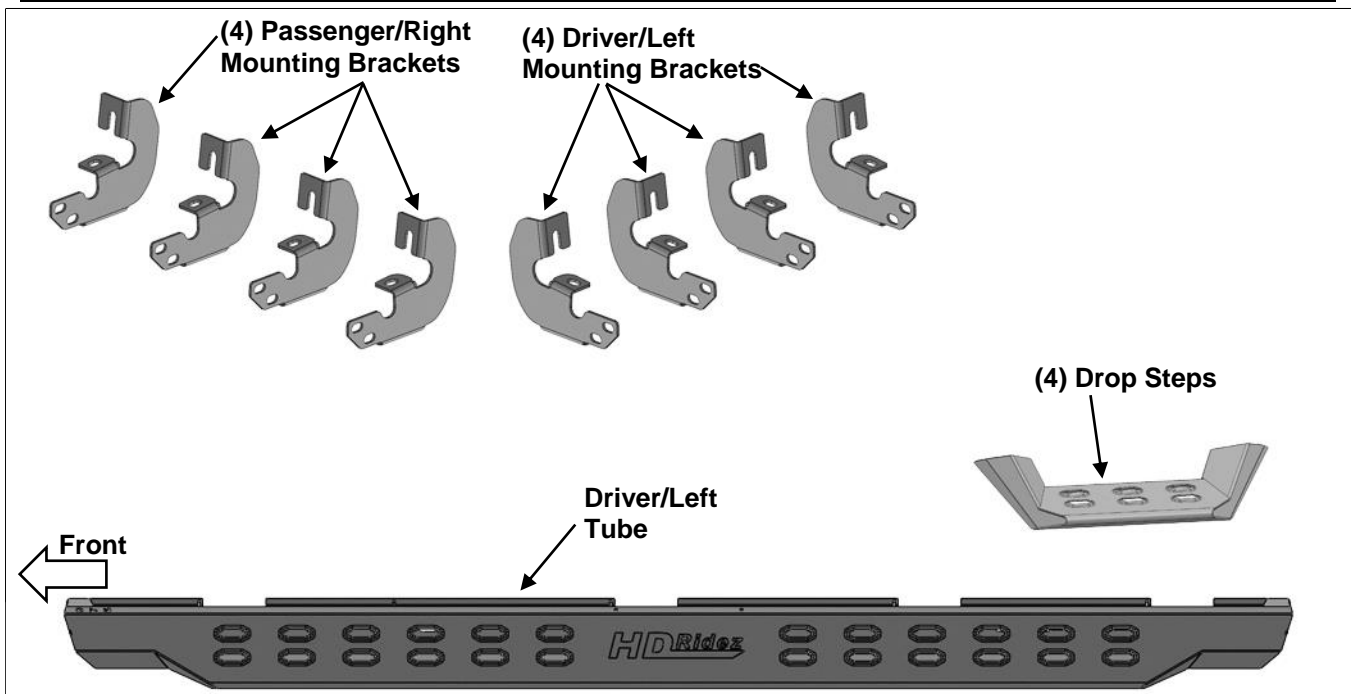


**PARTS LIST:**

|    |                                   |    |                                  |
|----|-----------------------------------|----|----------------------------------|
| 1  | Driver/left Tube                  | 8  | 8mm Triangle Double Bolt Plates  |
| 1  | Passenger/Right Tube              | 16 | 8mm x 25mm Hex Bolts             |
| 4  | Drop Steps                        | 16 | 8mm x 24mm OD x 2mm Flat Washers |
| 4  | Driver/Left Mounting Brackets     | 16 | 8mm x 22mm OD x 2mm Flat Washers |
| 4  | Passenger/Right Mounting Brackets | 16 | 8mm Lock Washers                 |
| 16 | 10mm x 30mm Hex Bolts             | 16 | 8mm Nylon Lock Nuts              |
| 32 | 10mm x 20mm OD x 2mm Flat Washers | 16 | 8mm Clip Nuts                    |
| 16 | 10mm Nylon Lock Nuts              |    |                                  |



**PROCEDURE:**

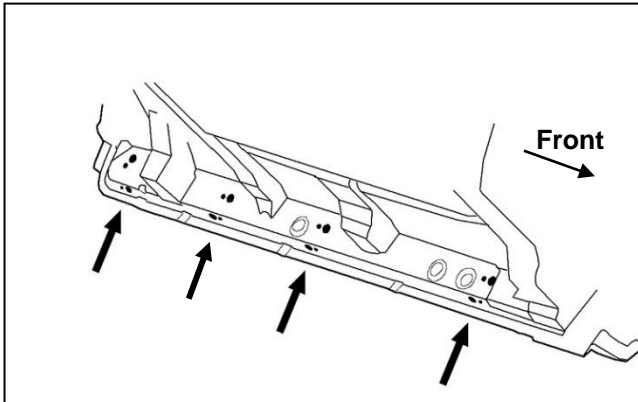
**REMOVE CONTENTS FROM BOX. VERIFY ALL PARTS ARE PRESENT. READ INSTRUCTIONS CAREFULLY BEFORE STARTING INSTALLATION. ASSISTANCE IS RECOMMENDED.**

1. Start the installation under the Driver/Left side of the vehicle. Locate the 4 factory mounting locations along the bottom and inner side of the body, **(Figure 1)**. Mounting Brackets will attach to all mounting locations. **NOTE:** Hold a Bracket up in place to help determine the mounting holes to use along the bottom and inner side of the body.
2. Remove rubber plugs as necessary from the (2) front mounting holes, **(Figure 2)**. Select (1) 8mm Clip Nut. Slide the Clip Nut into the large hole and over the smaller hole next to it in the side of the body panel. Line up threaded nut on the Clip Nut with smaller hole in body panel, **(Figure 3)**. Repeat to install a 2nd Clip Nut in the remaining front mounting hole in the bottom of the body panel.
3. Select (1) Driver/Left Mounting Bracket. Attach the Bracket to the (2) Clip Nuts with (2) 8mm Hex Bolts, (2) 8mm Lock Washers and (2) 8mm Flat Washers, **(Figure 4)**. Do not tighten the hardware.
4. Repeat **Steps 1—3** to attach the remaining (3) Driver/Left Mounting Brackets to the 2nd,3rd and rear mounting locations, **(Figure 1)**.
5. Select the Driver/Left Tube. Insert (2) 8mm Triangle Double Bolt Plates into the front (2) sets of (2) holes, **(Figure 5)**. Attach (1) Drop Step to the (2) Double Bolt Plates with (4) 8mm x 22mm Flat Washers and (4) 8mm Nylon Lock Nuts, **(Figure 6)**. Do not tighten hardware.
6. With assistance, line up the mounting tabs in the Driver/Left Tube to the rear faces of the Mounting Brackets. Secure the Tube to the Mounting Brackets with (8) 10mm Hex Bolts, (16) 10mm x 20mm Flat Washers and (8) 10mm Nylon Lock Nuts, **(Figure 7)**. Do not tighten hardware.
7. Level and adjust the Overland Step, then tighten all hardware.

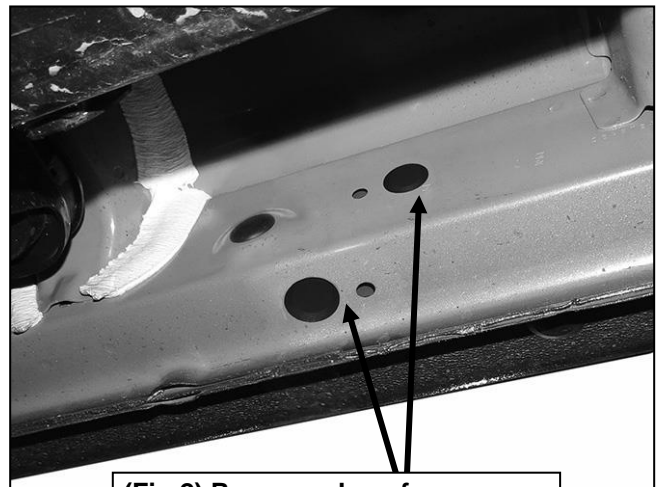
8. Repeat **Steps 1—7** to attach the Passenger/Right Overland Step.
9. Do periodic inspections to the installation to make sure that all hardware is secure and tight.

**To protect your investment**, Do not use any type of polish or wax that may contain abrasives that could damage the finish. Mild soap may be used also to clean the Overland Sliders.

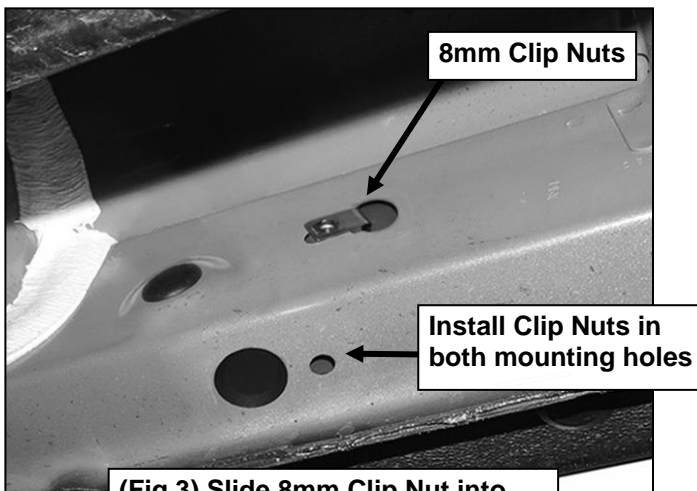
### Driver/Left Side Installation Pictured



(Fig 1) Driver/Left side mounting locations along bottom and back of body panel illustrated

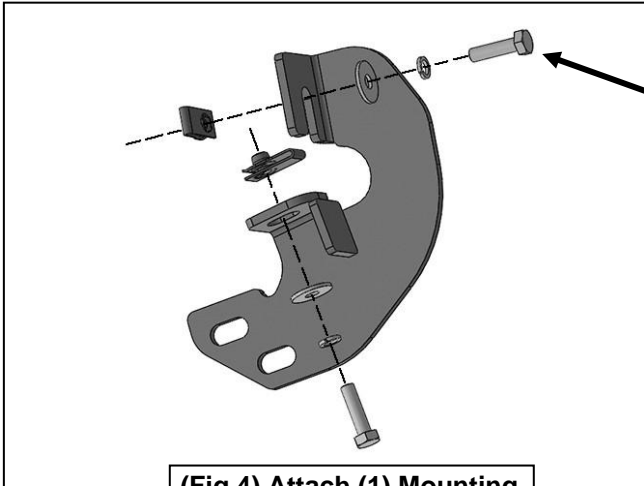


(Fig 2) Remove plugs from mounting locations as necessary



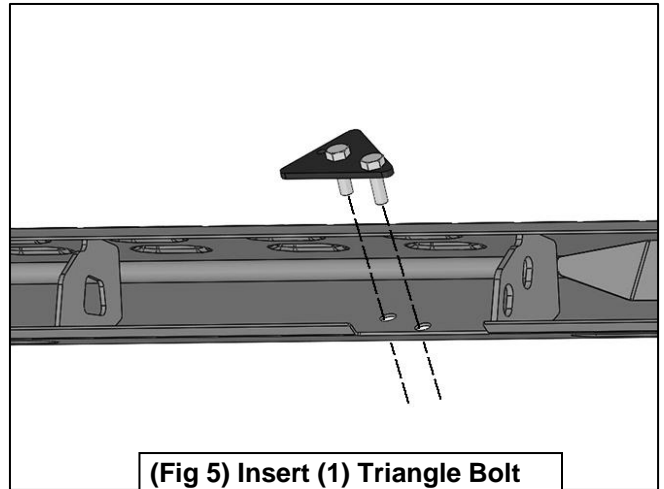
(Fig 3) Slide 8mm Clip Nut into large hole and over small hole

### Driver/Left Side Installation Pictured

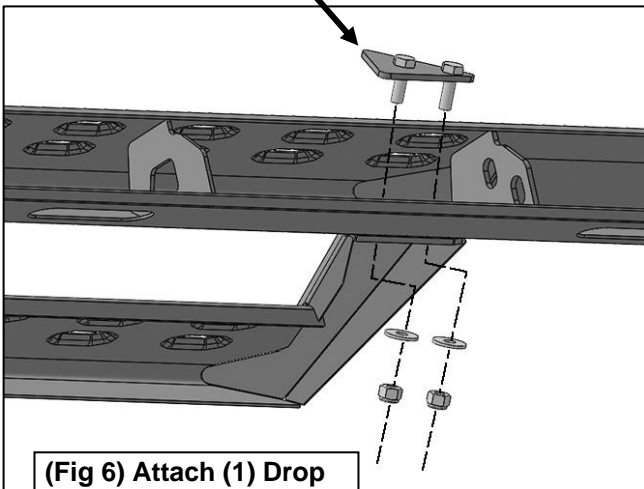


- (2) 8mm x 25mm Hex Bolts
- (2) 8mm Lock Washers
- (2) 8mm Flat Washers
- (2) 8mm Clip Nuts

(Fig 4) Attach (1) Mounting Bracket to the Clip Nuts

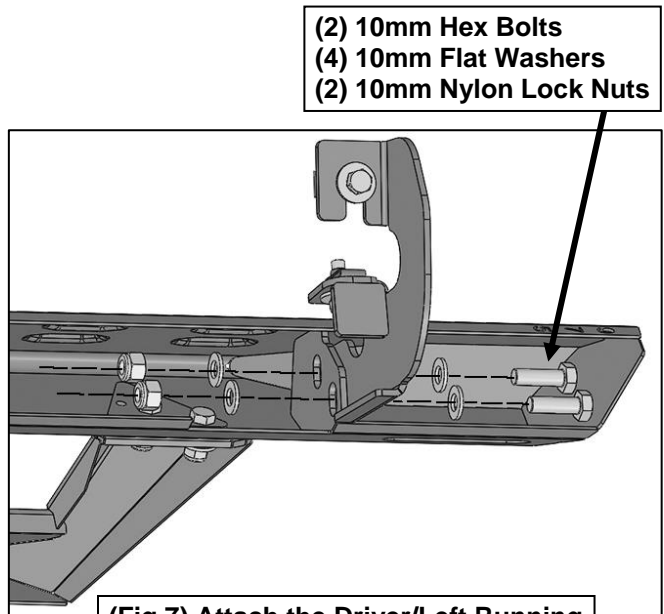


(Fig 5) Insert (1) Triangle Bolt Plate into the holes in the Tube



- 8mm Bolt Plate
- (2) 8mm Flat Washers
- (2) 8mm Nylon Lock Nuts

(Fig 6) Attach (1) Drop Step to (2) Bolt Plates



- (2) 10mm Hex Bolts
- (4) 10mm Flat Washers
- (2) 10mm Nylon Lock Nuts

(Fig 7) Attach the Driver/Left Running Board to the Mounting Brackets