

## iBot® by APS

**PART#: PB-A298**

READ INSTRUCTIONS CAREFULLY BEFORE STARTING INSTALLATION. REMOVE CONTENTS FROM BOX AND VERIFY ALL PARTS ARE PRESENT. ASSISTANCE IS RECOMMENDED.

\*ROCKER PANEL MOUNT

\*TRIMMING/ DRILLING REQUIRED FOR WIRING

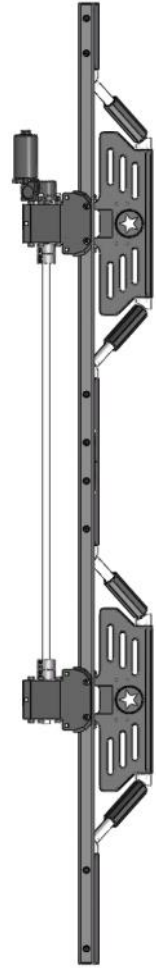
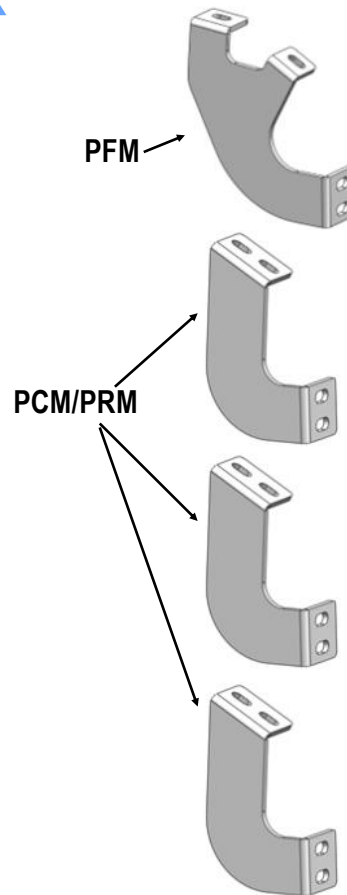
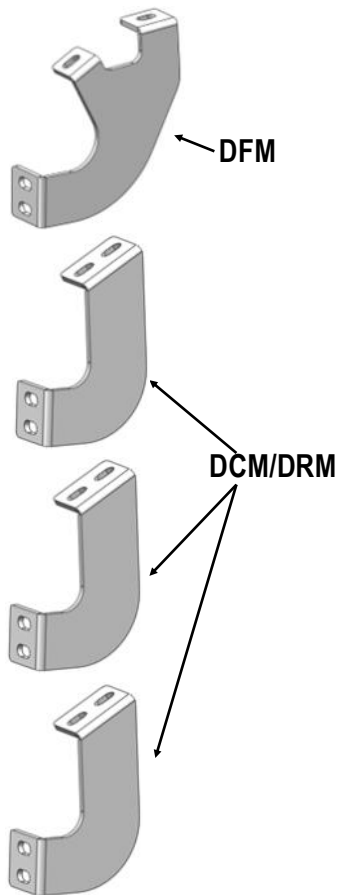
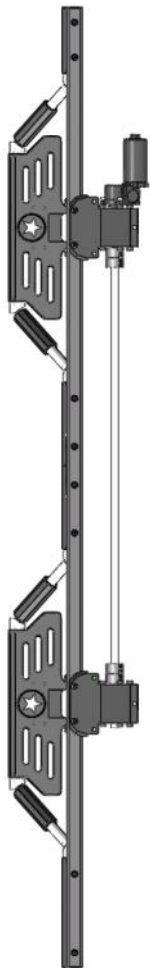
Fastener Size	Tightening Torque (ft-lbs)	Required
6mm	6-7	X
8mm	16-18	√
10mm	31-32	X
12mm	56-58	X
14mm	92-94	X

### PART LIST




Driver Side Step Bar




Front




Passenger Side Step Bar



Mounting Bracket List					
Item	QTY	Description	Item	QTY	Description
1#	1	Driver Front Mounting Brackets (DFM)	2#	1	Passenger Front Mounting Brackets (PFM)
3#	3	Driver Center/Rear Mounting Brackets (DCM/DRM)	4#	3	Passenger Center/Rear Mounting Brackets (PCM/PRM)

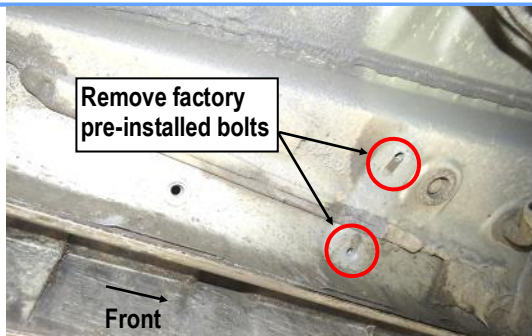
Hardware Package A (For Brackets Installation)					
Item	QTY	Description	Item	QTY	Description
1#	16	M8X1.25-30 Hex Bolts	3#	16	M8 Lock Washers
2#	16	M8 Large Flat Washers			
<div style="display: flex; justify-content: space-around; align-items: center;"> <div style="text-align: center;">  1# </div> <div style="text-align: center;">  2# </div> <div style="text-align: center;">  3# </div> </div>					

Hardware Package B (For Step Bars Installation)					
Item	QTY	Description	Item	QTY	Description
1#	16	M8X60 Decorative Bolts	3#	16	M8 Nylon Flange Lock Nuts
2#	16	M8 Large Flat Washers			
<div style="display: flex; justify-content: space-around; align-items: center;"> <div style="text-align: center;">  1 # </div> <div style="text-align: center;">  2 # </div> <div style="text-align: center;">  3 # </div> </div>					

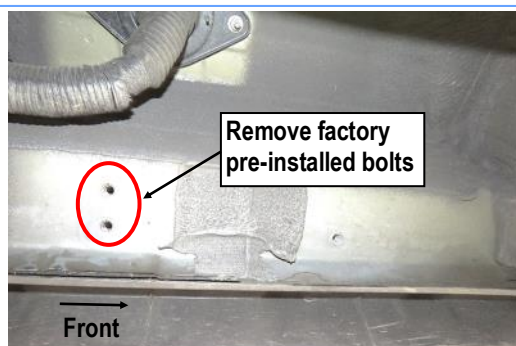
Electrical Accessories					
Item	QTY	Description	Item	QTY	Description
1#	1	Main harness with wire taps	2#	1	ECU (Electronic Control Unit)
3#	15	Zip Ties			
<div style="display: flex; justify-content: space-around; align-items: center;"> <div style="text-align: center;">  1 # </div> <div style="text-align: center;">  2 # </div> <div style="text-align: center;">  3# </div> </div>					

## STEP 1

Locate Driver Side front mounting points on the rocker panel under the front door. Remove the OE bolts before mounting the front bracket. Do the same for the center and rear mounting points. **(Figs 1&2).**



(Fig 1) Driver Side Front Mounting Location



(Fig 2) Driver Side Center/Rear Mounting Locations

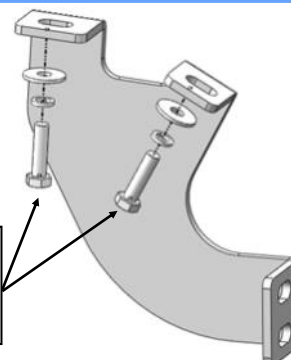
## STEP 2

Attach Driver Front Mounting Bracket (DFM) to the mounting location with (2) M8X1.25-30 Hex Bolts, (2) M8 Lock Washers and (2) M8 Large Flat Washers, (Fig 2&4). Do not fully tighten at this time. **(Fig 3)**

## STEP 3

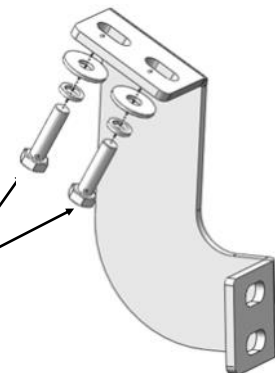
Repeat **Step 2** to install the Driver center Mounting Bracket and Driver Rear Mounting Bracket. Do not fully tighten hardware at this time. **Note:** (3) **Driver Side Center/Rear Mounting Brackets are universal.** (Fig 4)

(2) M8X1.25-30 Hex Bolts  
(2) M8 Lock Washers  
(2) M8 Large Flat Washers



(Fig 3) Driver Front Mounting Bracket Installation

(2) M8X1.25-30 Hex Bolts  
(2) M8 Lock Washers  
(2) M8 Large Flat Washers



(Fig 4) Driver Front Mounting Bracket Installation

## STEP 4

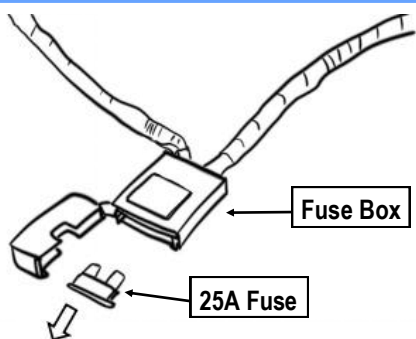
Move to the Passenger Side, repeat Step 1-3 to install Passenger Side Mounting Brackets (PFM/PCM/PRM).

**Note:** (3) **Passenger Side Center/Rear Mounting Brackets are universal**

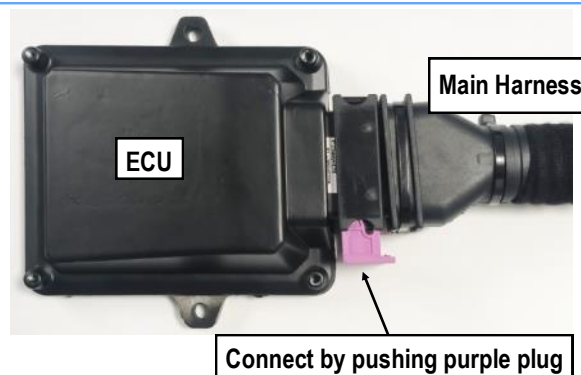
## STEP 5

Start from the engine compartment by opening the front hood of the vehicle. Locate the Battery and its terminals (positive/negative). Remove the 25A fuse from the fuse box that comes with the main harness. **(Fig 5).**

**\*WARNING:** Keeping the fuse connected to the fuse box may result in electrical sparks and risk of shorting when working with the battery.



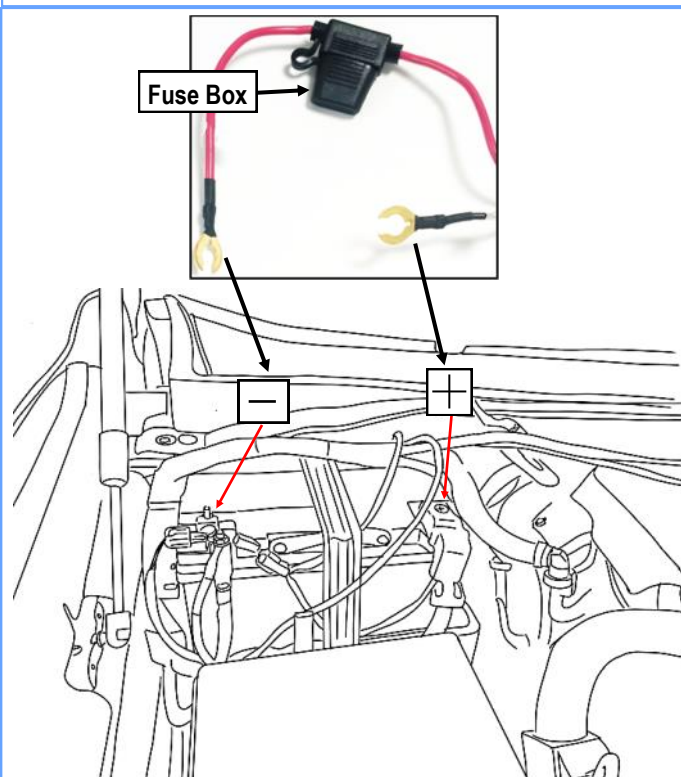
(Fig 5) 25A Fuse and Fuse Box



(Fig 7) ECU AND Main harness Connection

## STEP 6

Connect the positive power lead on main harness to the positive battery terminal. Connect the negative lead to the negative battery terminal. (Fig 6). Make sure both power leads are fully secured. **Connect the ECU to the main harness. (Fig 7)**



(Fig 6) Positive and Negative Battery Terminals

## STEP 7

Route the main harness around the battery, up along the rear of the engine compartment. The longer Driver-side branch of the main harness must route down the backside, against the fire wall, and down past the steering column towards the vehicle frame. Be sure to avoid contact with the steering column. (Fig 8).

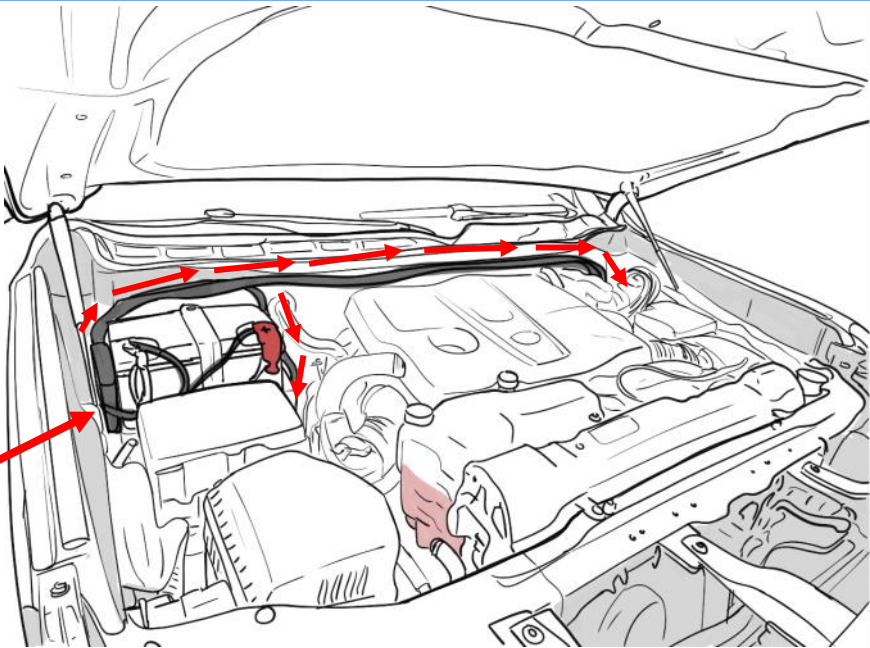
Route the shorter (marked "Passenger-side") leg of the harness down the passenger-side wheel well. Be sure to avoid contact with any moving or hot engine components. Attach and secure the main harness with supplied cable ties.

Be sure the harness avoids contact with the suspension and steering column.

**ECU should be secured near battery or any space away from the direct heat of the engine.**

## STEP 8

On Hybrid models, the battery is not located in the traditional location in the engine bay. Instead, locate the battery in the Driver Side Rear Seat. Lift the rear seat to unveil the enclosed battery space and find the positive and negative battery terminals. Connect the power leads on the Main Harness to the battery terminals. (Fig 9)



ECU should be secured near battery or any space away from the direct heat of the engine.

(Fig 8) Front Engine of the Vehicle



(Fig 9)

Route the main harness around the battery and along the inside of the cabin. Find a good spot to hide the ECU. The longer Driver-side branch of the main harness must route down to the outside of the cabin to the Driver-side motor, on the underside. **Be sure to avoid contact with the steering column and hot exhaust pipes. (Fig 10)**

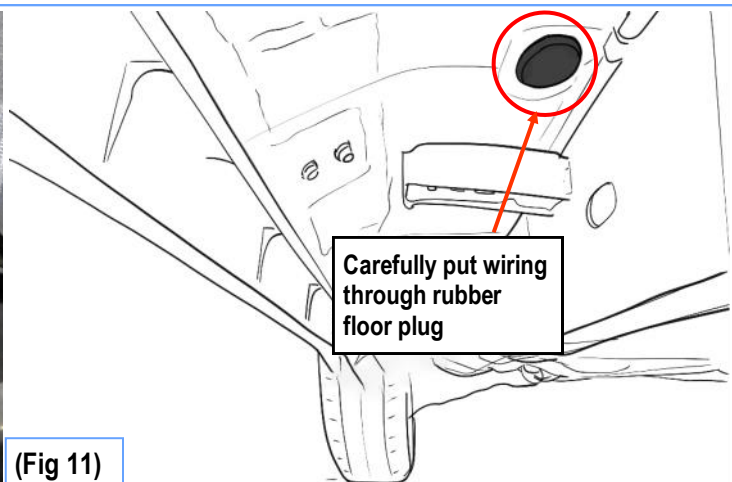
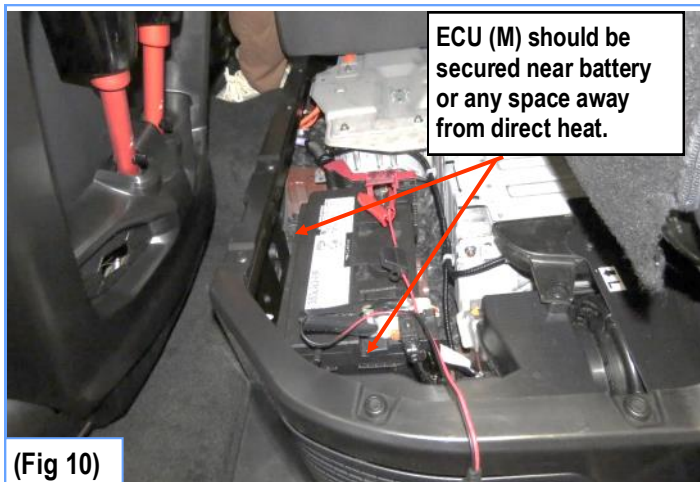
Route the shorter (marked "Passenger-side") leg of the harness to the Passenger Side underside. Be sure to avoid contact with any moving or hot engine components. It may be advisable to route along the inside of the cabin, under the carpet. Attach and secure the main harness with supplied cable ties.

**Be sure the harness avoids contact with the suspension and steering column.**

## STEP 9

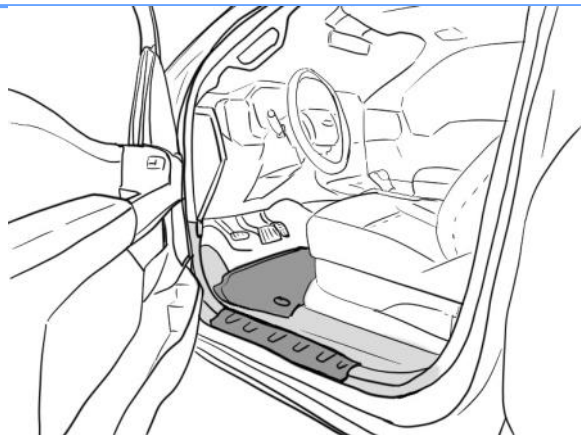
On the underside of the driver side, locate and remove the floor grommet in the floor panel behind the front wheel well. The grommet will be close to the front linkage arm. Poke a hole through the grommet and thread the two signal wires through and up into the vehicle cabin. **(Fig 11)**





## STEP 10

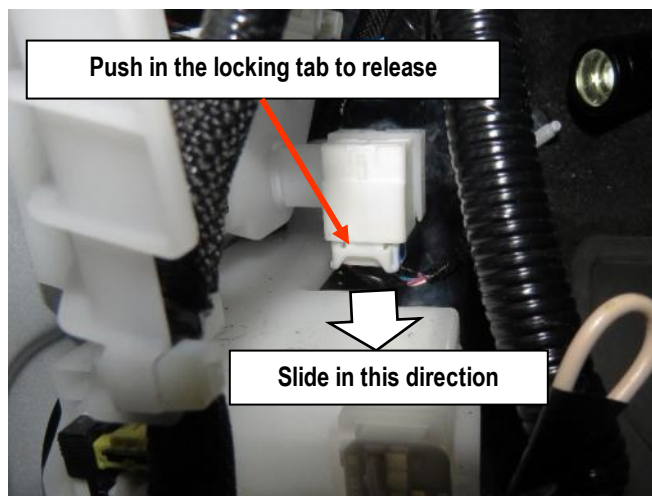
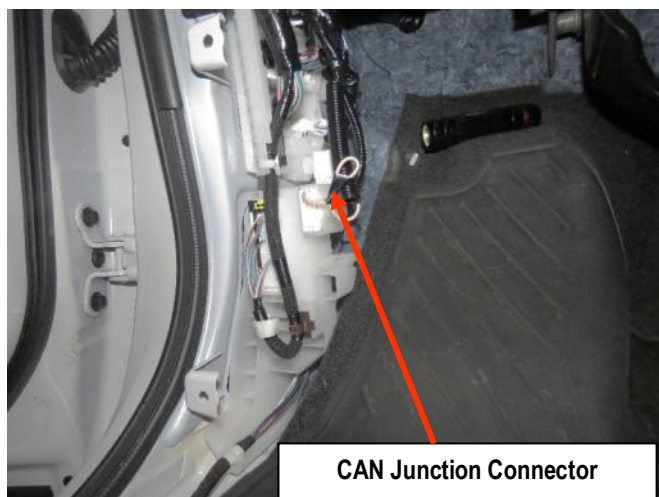
Inside the vehicle cabin, remove the driver-side front kick panel and bottom door sill plate. Peel back the carpet to access the hole where the grommet was removed. Feed the wires through.



## STEP 11

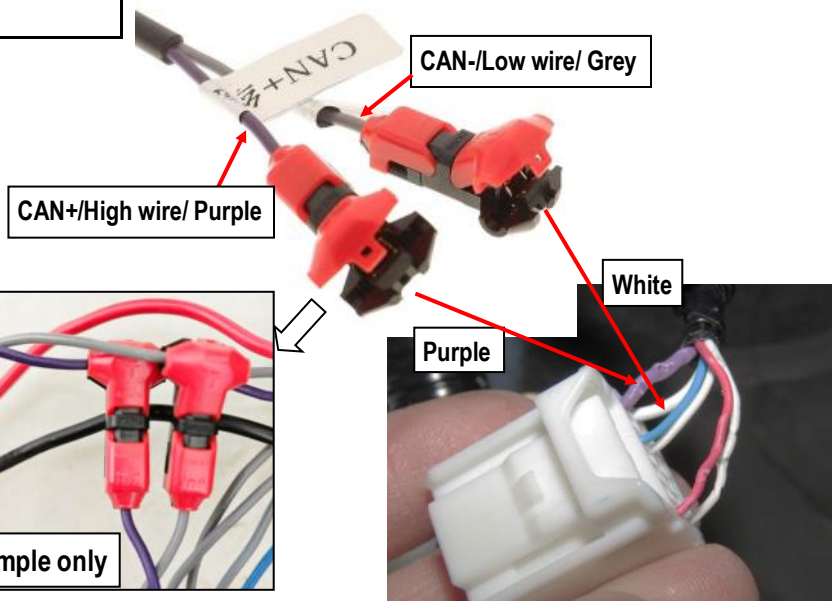
Locate the white OEM CAN Junction connector under the steering wheel, behind the kick panel. Be sure vehicle is not powered on. Slide the connector out of the holding junction by pushing the locking tab in the center and pulling downwards for easier access to wires.

On the white connector, identify the purple and white wires. Connect the High and Low wires from the main harness using the supplied wire taps. After successfully connecting the wires, return the connector back into its place and check that it is secure.



Factory CAN Wire/Data Line	Main harness wire color
White (Low)	Grey (Low)
Purple (High)	Purple (High)

**\*NOTE:** On some vehicle trims, the colors of the wires may be different. In these cases, tap any one of the paired wires. White wire is "CAN Low", and the Colored wire is "CAN

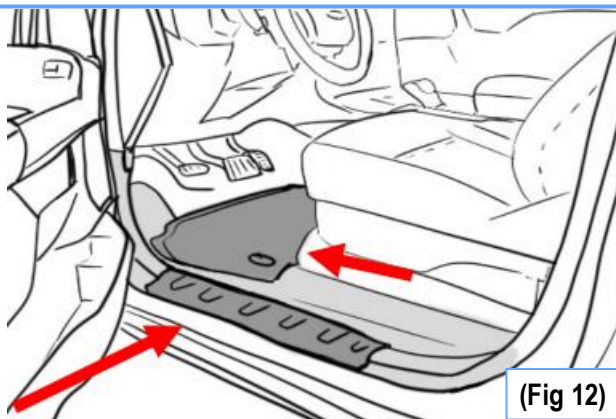


## STEP 12

Seal the rubber boot with RTV Silicone Sealant if needed.

Hide wires and reattach the kick panel with the carpet fully unfurled in its original position. Reattach the door sill panels and check to make sure there are no obstructions or potential snag points around the brake pedal area. **(Fig 12)**

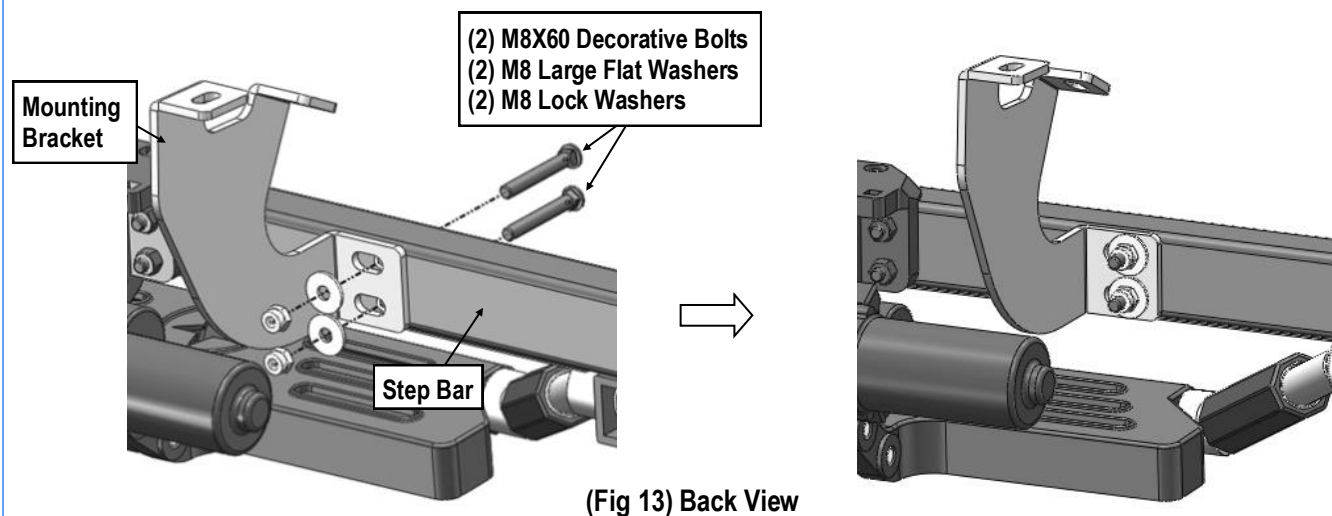
Be sure to reattach plastic kick panel nut.



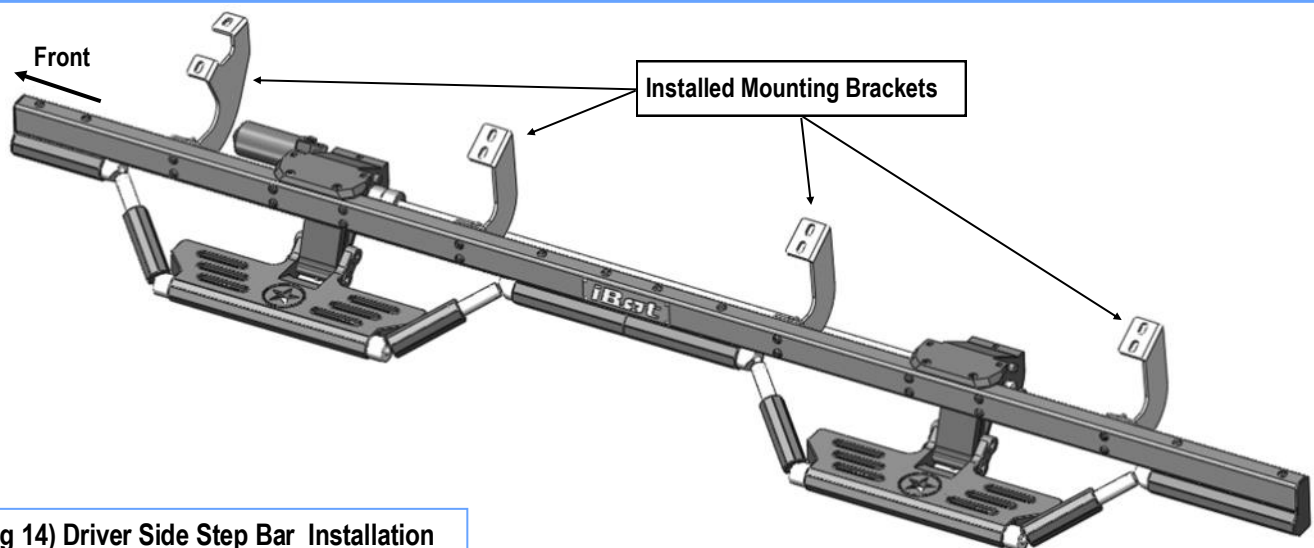
## STEP 13

Move to the installation of Step Bars. select and attach the Driver Side Power Step Board onto the Mounting Brackets with (16) M8 Large Flat Washers, (16) M8 Nylon Lock Nuts and (16) M8 Decorative Bolts, **(Figs 13&14)**. Properly level and adjust the Step Bar and fully tighten all hardware.

Repeat for Passenger side Power Step Installation.



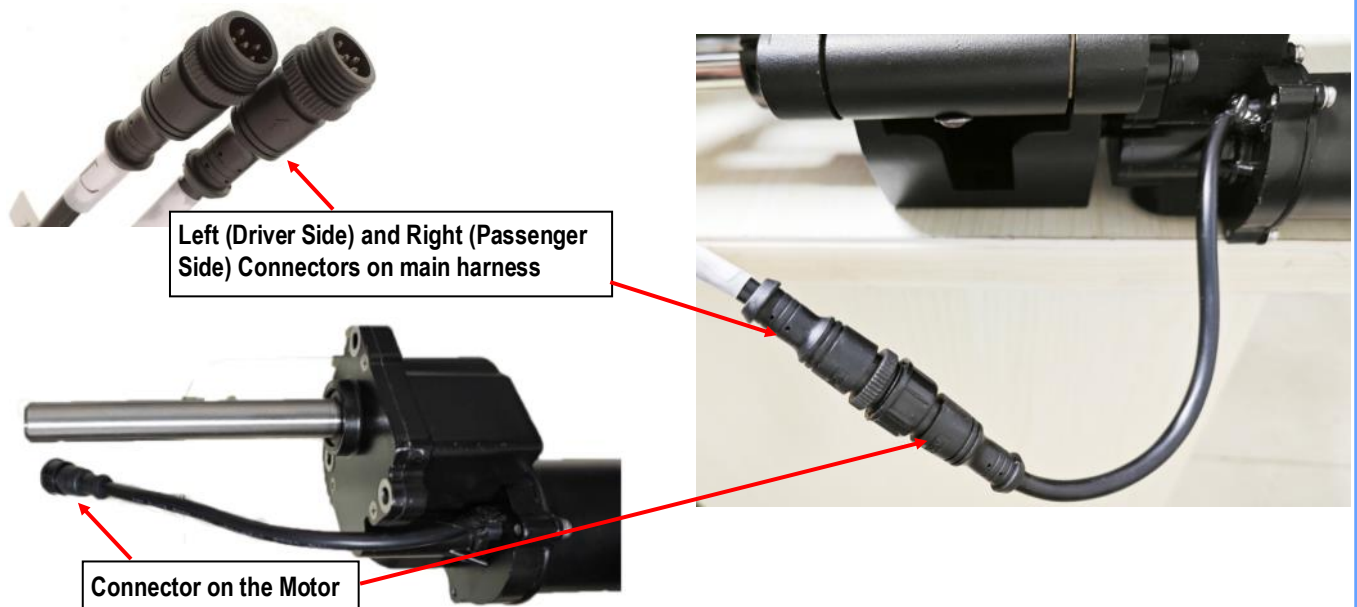




(Fig 14) Driver Side Step Bar Installation

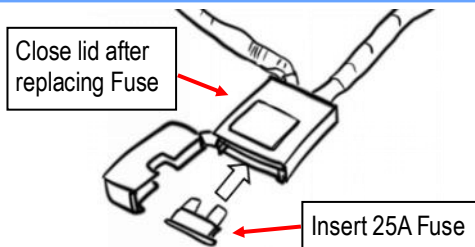
## STEP 14

Connect the harnesses on the Driver Power Step Board and Passenger Power Step Board to the main harness.



## STEP 15

Re-place Fuse into Fuse Box.



## STEP 16

Once the Step Bars are Installed, perform a function check by opening and closing doors several times, make sure the pedals deploy and retract normally. After cycling the step, tighten all hardware on the board and brackets.

Installation complete.

**Note:** If pedal does not move, try to flip the CAN Signal High and Low wires.

### Attention

Do periodic inspections to the installation to make sure that all hardware is secure and tight.  
In order to protect your bars/boards, please use mild soap/non-abrasive products for cleaning only.