

## iBot® by APS

PART#: PB-A230

READ INSTRUCTIONS CAREFULLY BEFORE STARTING INSTALLATION. REMOVE CONTENTS FROM BOX AND VERIFY ALL PARTS ARE PRESENT. ASSISTANCE IS RECOMMENDED.

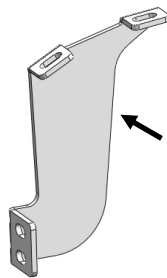
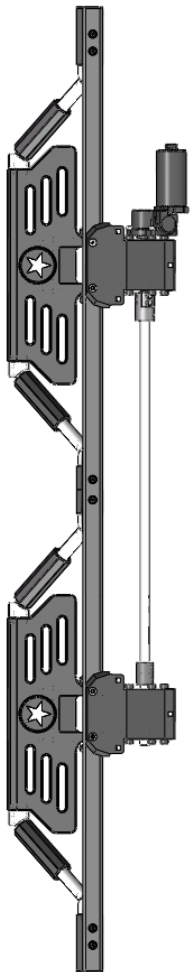
\*ROCKER PANEL MOUNT

\*TRIMMING/ DRILLING MAY BE REQUIRED FOR WIRING

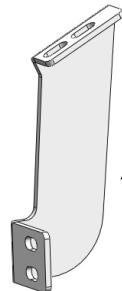
Fastener Size	Tightening Torque (ft-lbs)	Required
6mm	6-7	X
8mm	16-18	√
10mm	31-32	X
12mm	56-58	X
14mm	92-94	X

### PART LIST

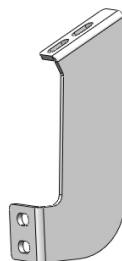
#### Driver Side Step Bar



Driver Front Mounting Bracket (DFM)



Driver Center Mounting Bracket (DCM)

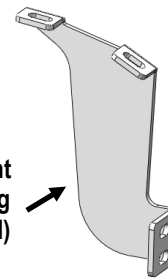
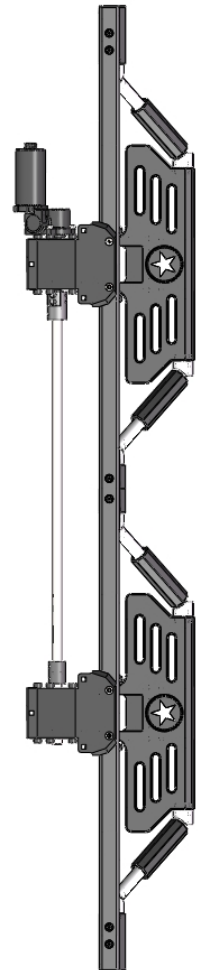


Driver Rear Mounting Bracket (DRM)

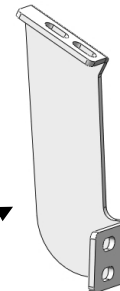
#### Front



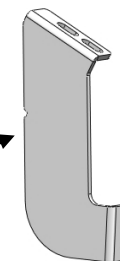
#### Passenger Side Step Bar



Passenger Front Mounting Bracket (PFM)



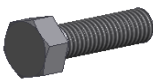
Passenger Center Mounting Bracket (PCM)




Passenger Rear Mounting Bracket (PRM)

## Hardware Package A (For Brackets Installation)


Item	QTY	Description	Item	QTY	Description
1#	12	M8X1.25-30 Hex Bolts	3#	12	M8 Lock Washers
2#	12	M8 Large Flat Washers			



1#



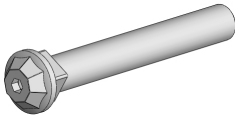
2#




3#

## Hardware Package B (For Step Bars Installation)

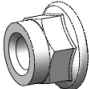
Item	QTY	Description	Item	QTY	Description
1#	12	M8X60 Decorative Bolts	3#	12	M8 Nylon Flange Lock Nuts
2#	12	M8 Large Flat Washers			



1 #




2 #




3 #

## Electrical Accessories


Item	QTY	Description	Item	QTY	Description
1#	1	Main harness with wire taps	2#	1	ECU (Electronic Control Unit)
3#	15	Zip Ties			



1 #



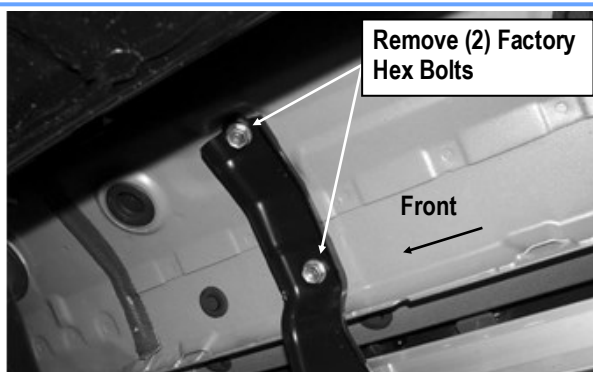
2 #



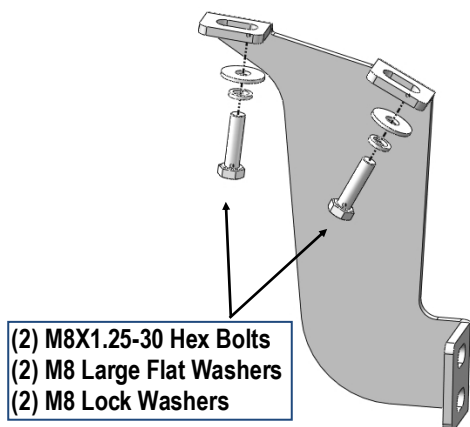
3#

## STEP 1

Start installation on the passenger side of the vehicle, remove the existing (2) factory bolts located by the front tire opening securing the factory rocker panel bracket to the vehicle, **(Fig1)**. Attach the Passenger Front Mounting Bracket on the factory rocker panel bracket, line up to the (2) mounting threaded holes and secure with (2) M8X1.25-30mm Hex Bolts, (2) M8 Lock Washers and (2) M8 Large Flat Washers, **(Fig 2)**. Do not fully tighten hardware at this time.



(Fig 1) Passenger Side Front Mounting Location



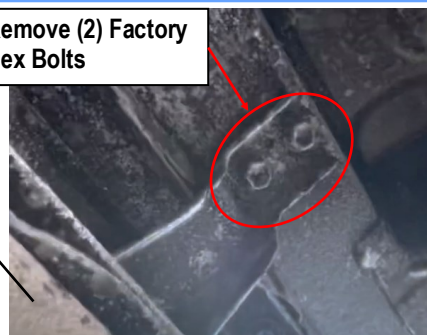
(Fig 2) Passenger Front Mounting Bracket Installation

## STEP 2

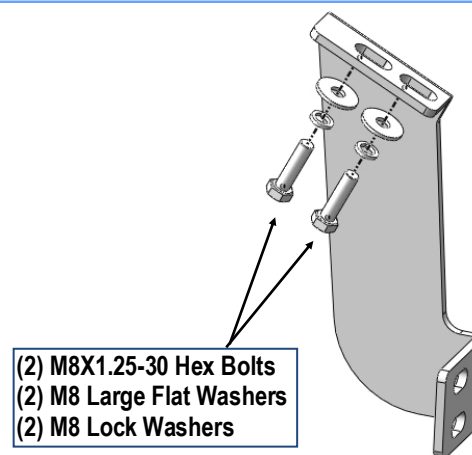
Move to the Passenger Side Center Mounting Location, **(Fig 3)**. Repeat **Step 2** to install the Passenger Center Mounting Bracket, **(Fig 1)**. Do not fully tighten hardware at this time.

Remove (2) Factory  
Hex Bolts

Front



(Fig 3) Passenger Side Center Mounting Location



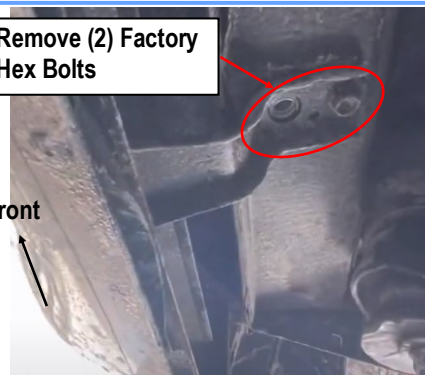
(Fig 4) Passenger Center Mounting Bracket Installation

## STEP 3

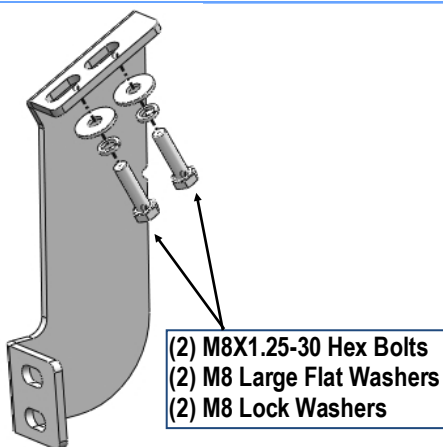
Move to the Passenger Side Rear Mounting Location. Repeat **Step 2** to install the Passenger Rear Mounting Bracket **(Figs 5&6)**. Do not fully tighten hardware at this time.

Remove (2) Factory  
Hex Bolts

Front



(Fig 5) Passenger Side Rear Mounting Location

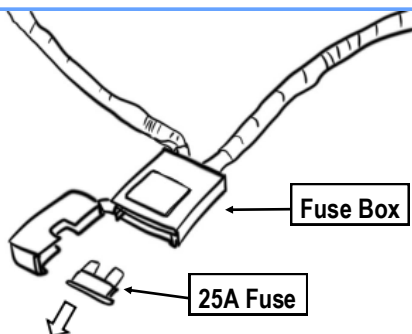


(Fig 6) Passenger Rear Mounting Bracket Installation

## STEP 4

Start from the engine compartment by opening the front hood of the vehicle. Locate the Battery and its terminals (positive/negative). Remove the 25A fuse from the fuse box that comes with the main harness. (Fig 7).

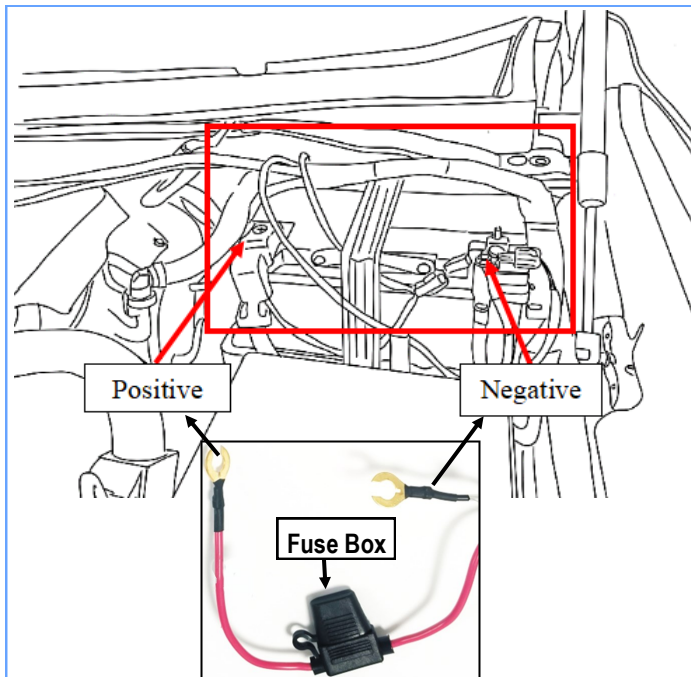
**\*WARNING:** Keeping the fuse connected to the fuse box may result in electrical sparks and risk of shorting when working with the battery.



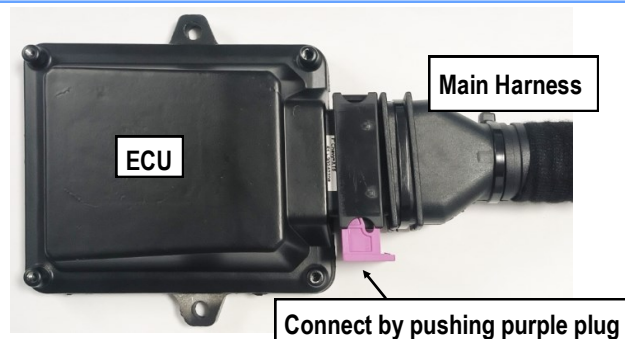
(Fig 7) 25A Fuse and Fuse Box

## STEP 5

Connect the positive power lead on main harness to the positive battery terminal. Connect the negative lead to the negative battery terminal. (Fig 8). Make sure both power leads are fully secured. **Connect the ECU to the main harness. (Fig 9)**



(Fig 8) Positive and Negative Battery Terminals



(Fig 9) ECU AND Main harness Connection

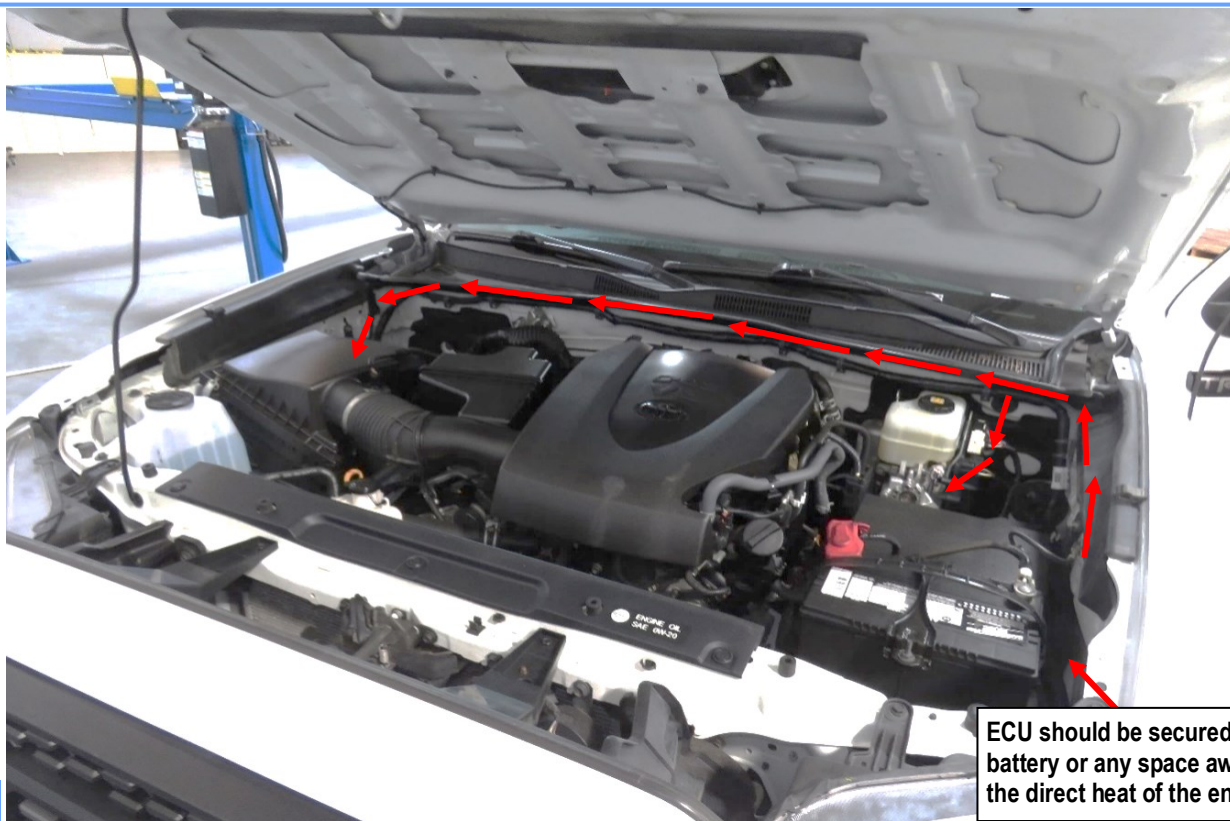
## STEP 6

Route the main harness around the battery, up along the rear of the engine compartment. The longer Driver-side branch of the main harness must route down the backside, against the fire wall, and down past the steering column towards the vehicle frame. Be sure to avoid contact with the steering column. (Fig 10)

Route the Passenger-side leg of the harness down the Passenger-side wheel well. Be sure to avoid contact with any moving



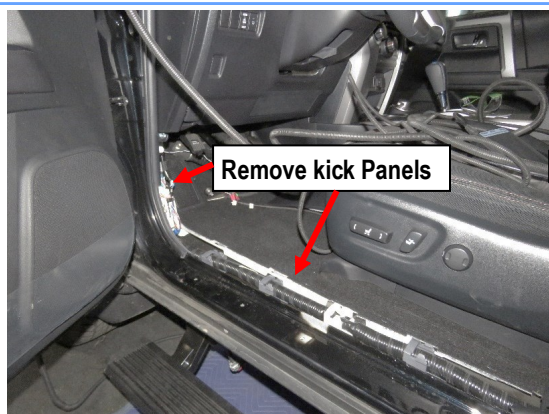
or hot engine components. Attach and secure the main harness with supplied Zip ties.  
**Be sure the harness avoids contact with the suspension and steering column.**  
**ECU should be secured near battery or any space away from the direct heat of the engine.**



(Fig 10)

## STEP 7

Inside the vehicle cabin, remove the bottom door sill panel and then the driver-side front kick panel. Peel back the carpet to access the hole with a removeable grommet. This is the hole where the signal wires from the Main Harness will need to feed through.

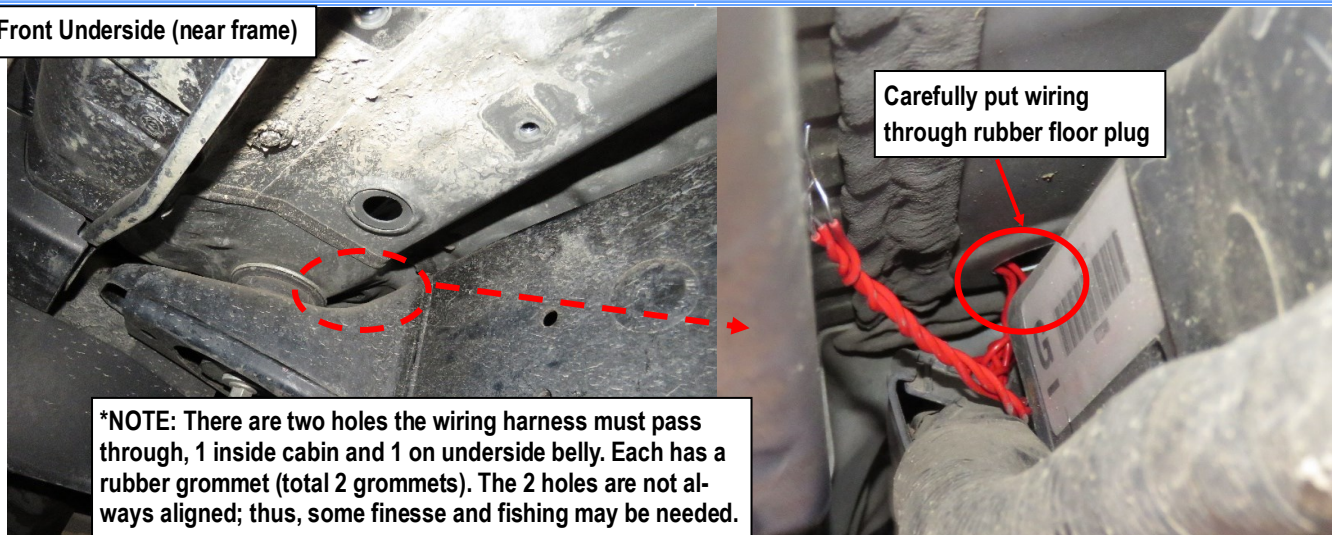




## STEP 8

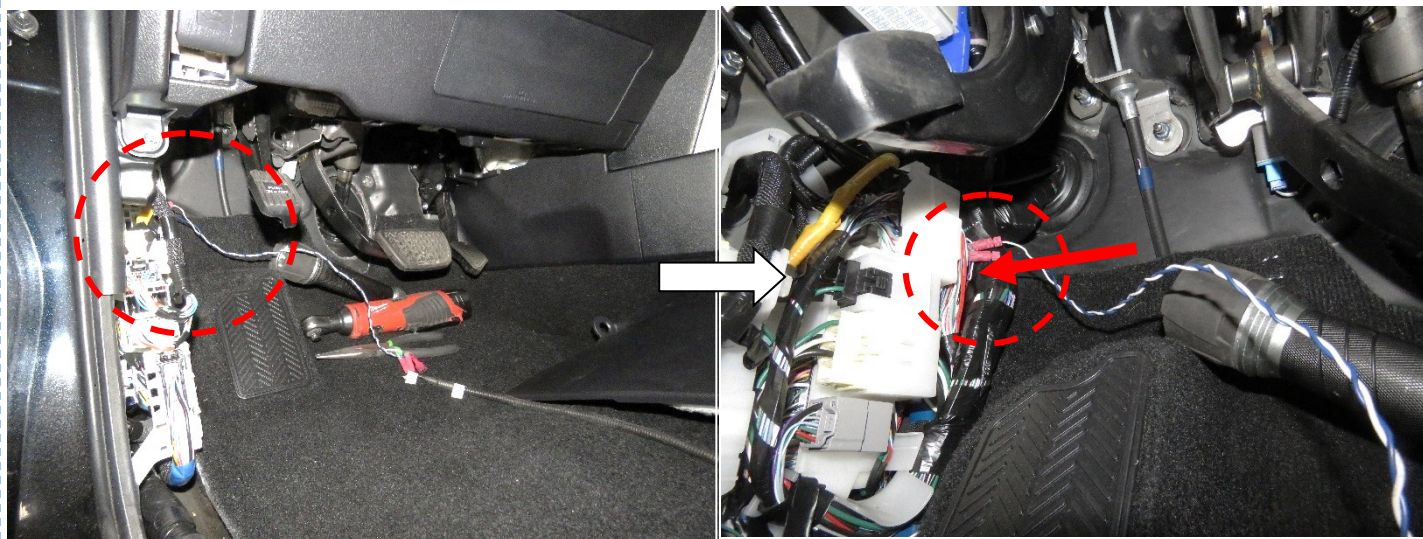
On the underside of the driver side, locate and remove the floor grommet in the floor panel above the frame. The grommet will be in a tight space above the frame and OE conduit. Poke a hole through the grommet and thread the two signal wires through and up into the vehicle cabin.

Front Underside (near frame)

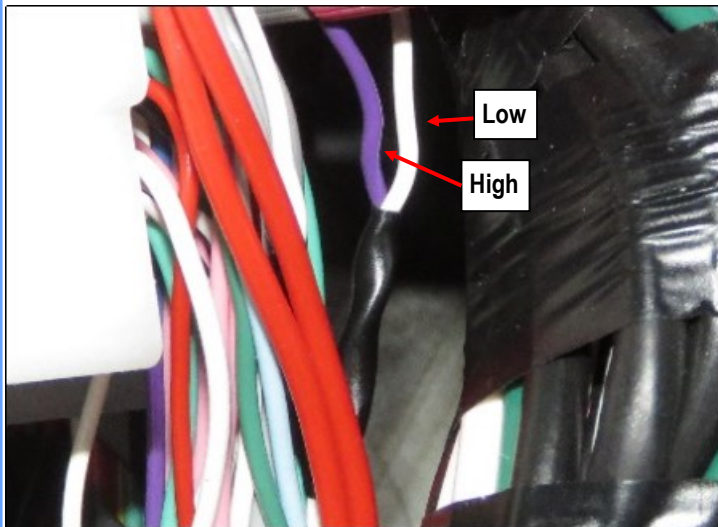


## STEP 9

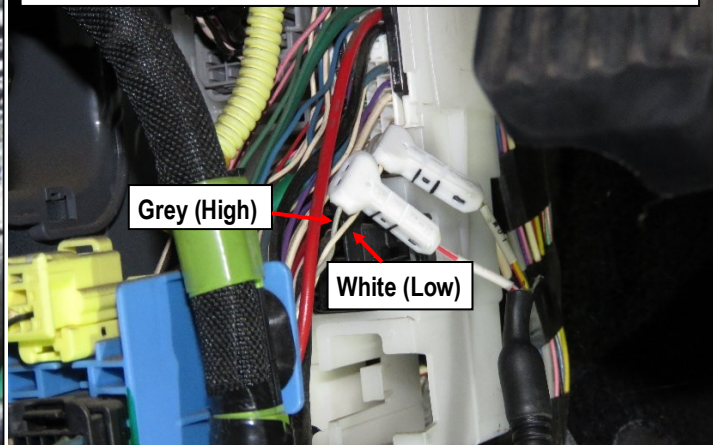
Locate the white OEM CAN Junction connector under the steering wheel, behind the kick panel. Be sure vehicle is not powered on. Locate the large bundled harness of wires on the backside of the junction (top of the stack of connectors). There should be several pairs of twisted colored wires in the wire harness bundle.



On the white connector, identify the twisted pair of Purple and White wires. Connect the High and Low wires from the main harness using the supplied wire taps. After successfully connecting the wires, check that it is secure and hidden away. **(Fig 11)**

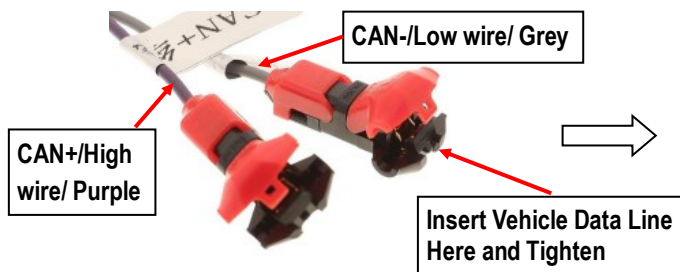


Example of twisted pair being on the front of the connector hub instead of the rear. Location depends on model year.



Factory CAN Wire	Main harness wire color
Purple (High)	Purple (High)
White (Low)	Grey (Low)

**NOTE:** Depending on the year of make, the colors of the wires may be different. In these cases, the white wire of the twisted pair is always "CAN Low". If possible, avoid tapping the RED wires.



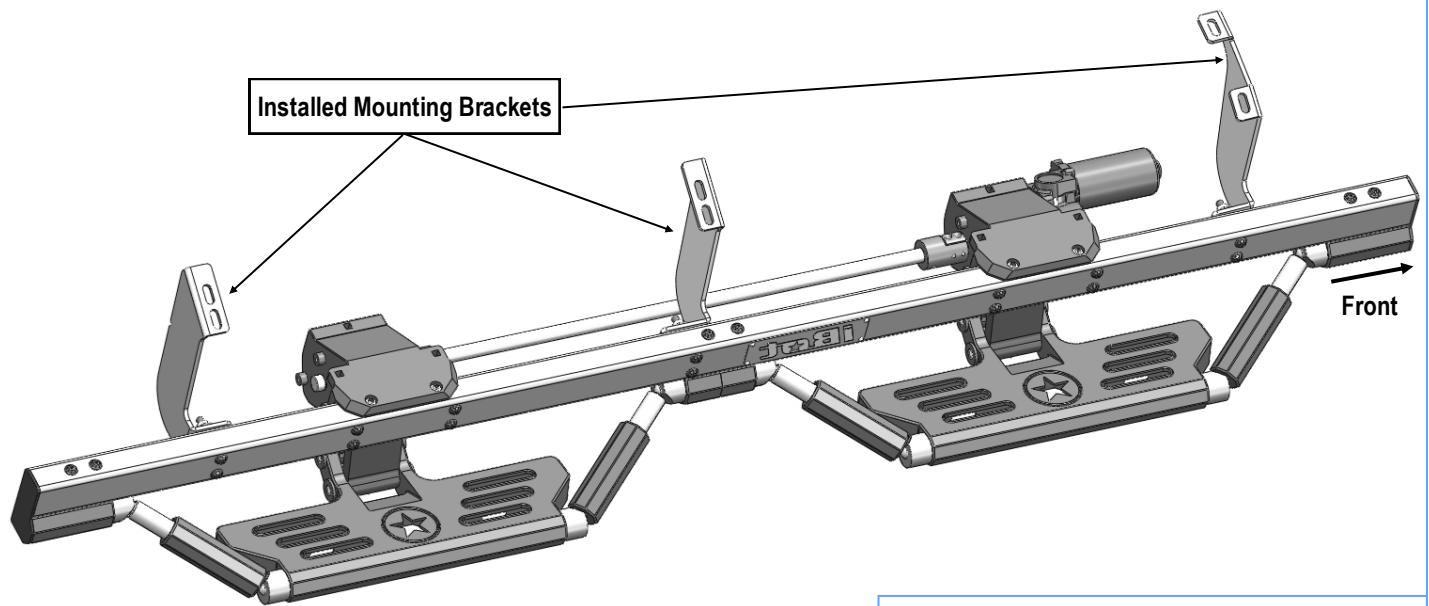
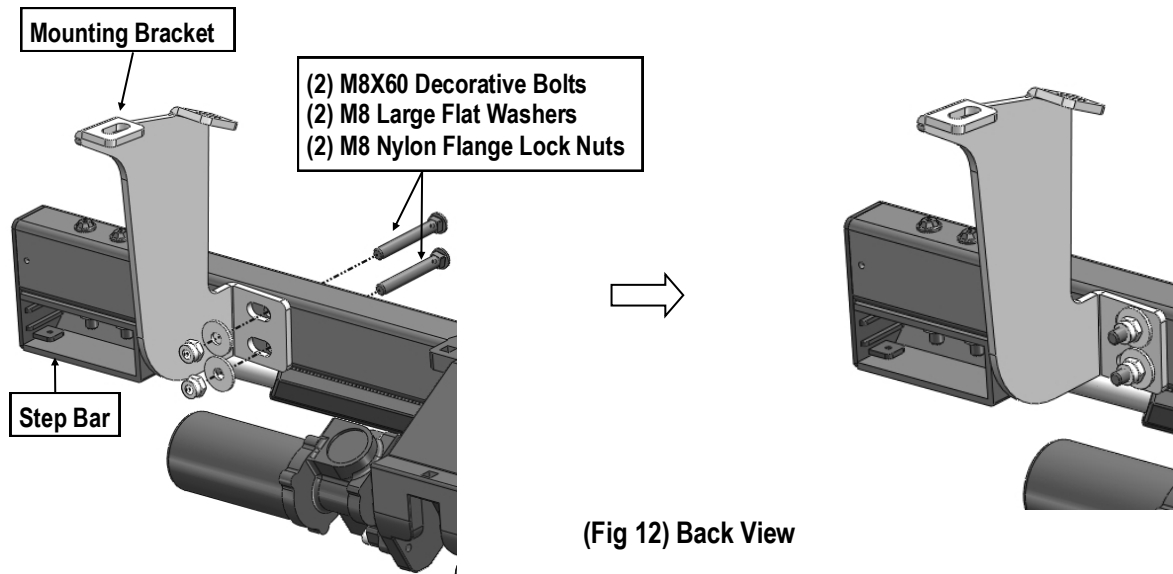
Example only

(Fig 11)

## STEP 10

Move to the installation of Step Bars. select and attach the Passenger Side Power Step Board onto the Mounting Brackets with (12) M8 Large Flat Washers, (12) M8 Nylon Flange Lock Nuts and (12) M8 Decorative Bolts, **(Figs 12&13)**. Properly level and adjust the Step Bar and fully tighten all hardware. Repeat for the other side Power Step Installation.





(Fig 13) Passenger Side Step Bar Installation



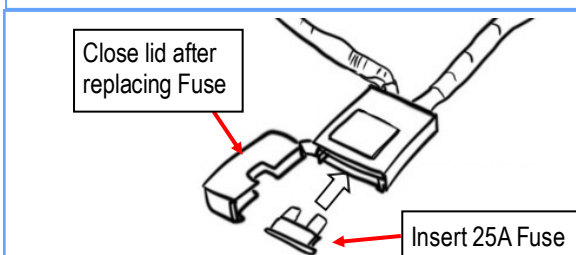
## STEP 11

Connect the harnesses on the Driver Power Step Board and Passenger Power Step Board to the main harness.



## STEP 12

Re-place Fuse into Fuse Box.



## STEP 13

Once the Step Bars are Installed, perform a function check by opening and closing doors several times, make sure the pedals deploy and retract normally. After cycling the step, tighten all hardware on the board and brackets.

Installation complete.

**Note:** If pedal does not move, try to flip the CAN Signal High and Low wires.

### Attention

- Do periodic inspections to the installation to make sure that all hardware is secure and tight.
- In order to protect your bars/boards, please use mild soap/non-abrasive products for cleaning only.
- During severe winter conditions, the electric running board may become frozen and unable to function properly. In such situations, or under other unfavorable conditions that may affect its normal operation, it is recommended to remove the fuse to disconnect the power supply, temporarily disabling the electric running board to prevent potential damage.