

## iBot® by APS

PART#: PB-A311

READ INSTRUCTIONS CAREFULLY BEFORE STARTING INSTALLATION. REMOVE CONTENTS FROM BOX AND VERIFY ALL PARTS ARE PRESENT. ASSISTANCE IS RECOMMENDED.

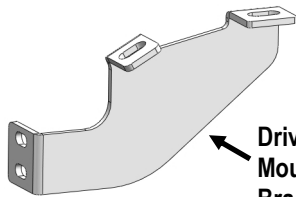
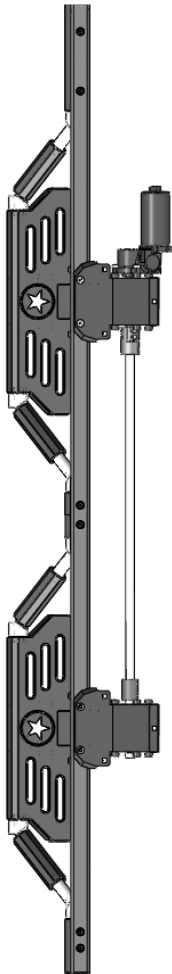
\*ROCKER PANEL MOUNT

\*TRIMMING/ DRILLING MAY BE REQUIRED FOR WIRING

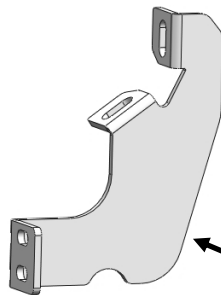
Fastener Size	Tightening Torque (ft-lbs)	Required
6mm	6-7	X
8mm	16-18	√
10mm	31-32	X
12mm	56-58	X
14mm	92-94	X

### PART LIST

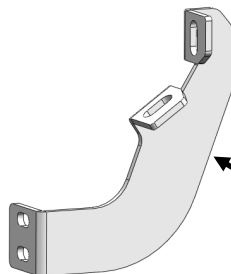
#### Driver Side Step Bar



Driver Front Mounting Bracket (DFM)



Driver Center Mounting Bracket (DCM)

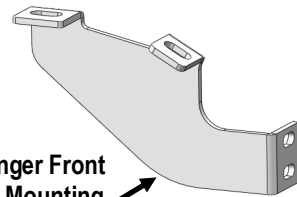
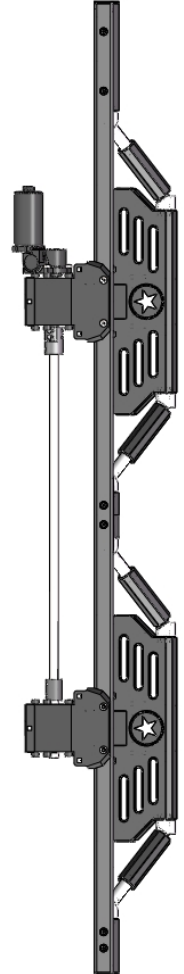


Driver Rear Mounting Bracket (DRM)

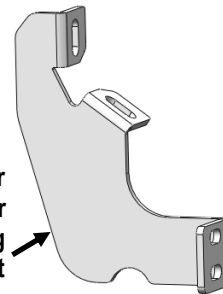
#### Front



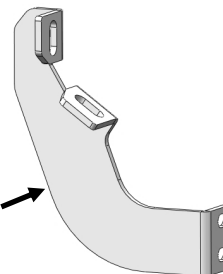
#### Passenger Side Step Bar



Passenger Front Mounting Bracket (PFM)



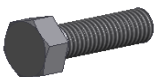
Passenger Center Mounting Bracket




Passenger Rear Mounting Bracket (PRM)

## Hardware Package A (For Brackets Installation)


Item	QTY	Description	Item	QTY	Description
1#	12	M10X1.5-30 Hex Bolts	3#	12	M10 Lock Washers
2#	12	M10 Flat Washers			



1#



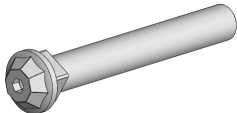
2#




3#

## Hardware Package B (For Step Bars Installation)

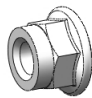
Item	QTY	Description	Item	QTY	Description
1#	12	M8X60 Decorative Bolts	3#	12	M8 Nylon Flange Lock Nuts
2#	12	M8 Large Flat Washers			



1 #




2 #




3 #

## Electrical Accessories


Item	QTY	Description	Item	QTY	Description
1#	1	Main harness with wire taps	2#	1	ECU (Electronic Control Unit)
3#	15	Zip Ties			



1 #



2 #

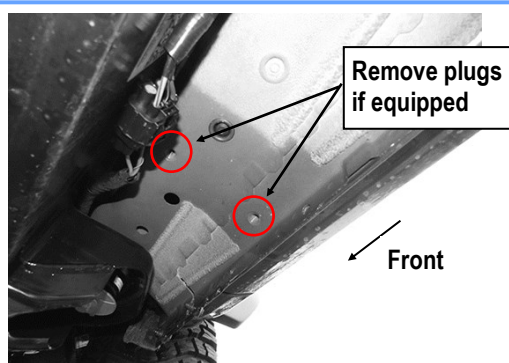


3#

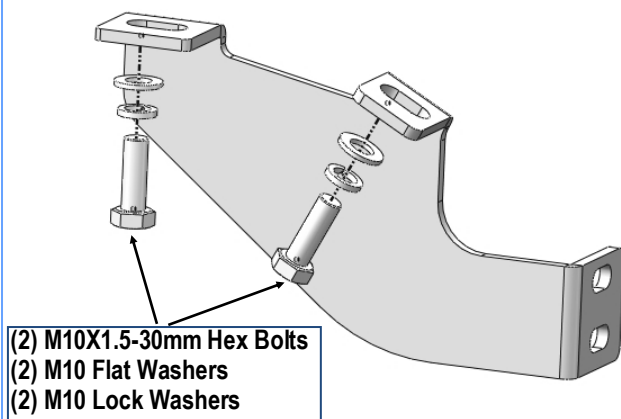
## STEP 1

Start installation on the passenger side of the vehicle. Locate the threaded holes on Passenger Front Mounting Location. Remove the plastic plugs covering the holes if equipped, (Fig1).

Select the Passenger Front Mounting Bracket (PFM). Attach the Mounting Bracket to the front location with (2) M10X1.5-30 Hex Bolts, (2) M10 Lock Washers and (2) M10 Flat Washers, (Fig 2). Do not fully tighten hardware at this time.



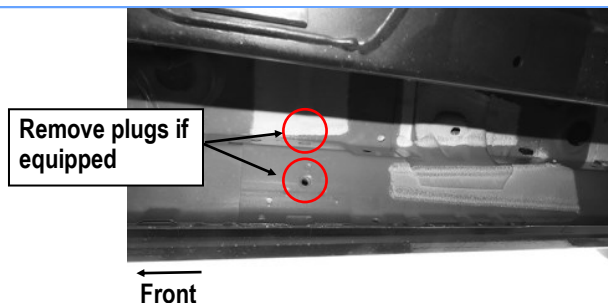
(Fig 1) Passenger Side Front Mounting Location



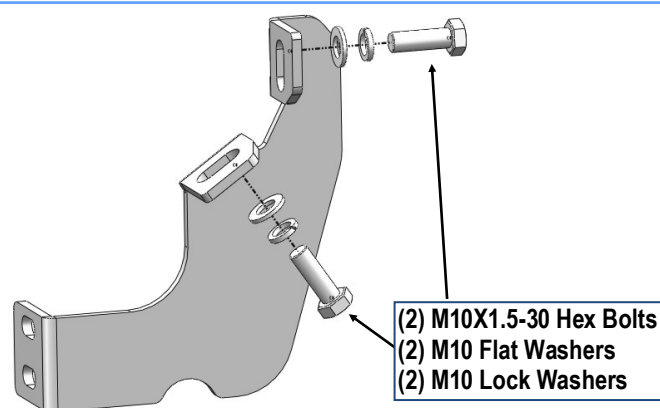
(Fig 2) Passenger Front Mounting Bracket Installation

## STEP 2

Move to the Passenger Side Center Mounting Location, (Fig 3). Repeat **Step 1** to install the Passenger Center Mounting Bracket, (Fig 4). Do not fully tighten hardware at this time.



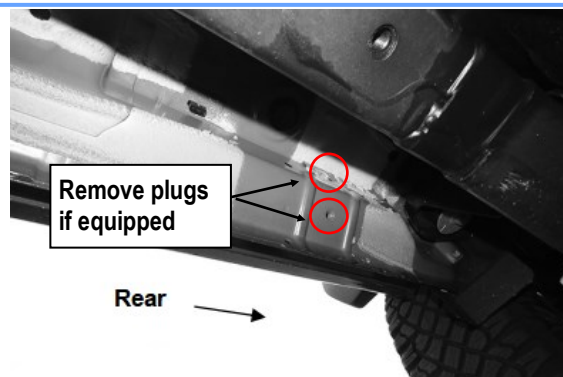
(Fig 3) Passenger Side Center Mounting Location



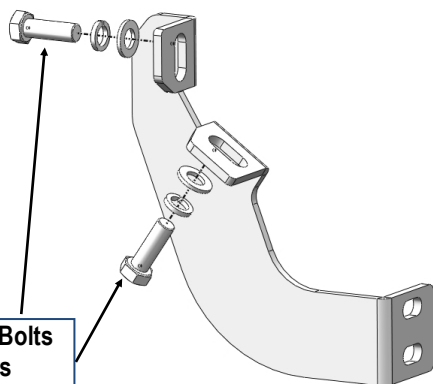
(Fig 4) Passenger Center Mounting Bracket Installation

## STEP 3

Move to the Passenger Side Rear Mounting Location. Repeat **Step 1** to install the Passenger Rear Mounting Bracket with (2) M10X1.5-30mm Hex Bolts, (2) M10 Lock Washers and (2) M10 Flat Washers, (Figs 5&6) . Do not fully tighten hardware at this time.



(Fig 5) Passenger Side Rear Mounting Location



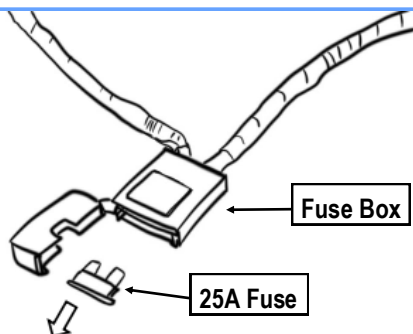
(2) M10X1.5-30 Hex Bolts  
(2) M10 Flat Washers  
(2) M10 Lock Washers

(Fig 6) Passenger Rear Mounting Bracket Installation

## STEP 4

Start from the engine compartment by opening the front hood of the vehicle. Locate the Battery and its terminals (positive/negative). Remove the 25A fuse from the fuse box that comes with the main harness. (Fig 7).

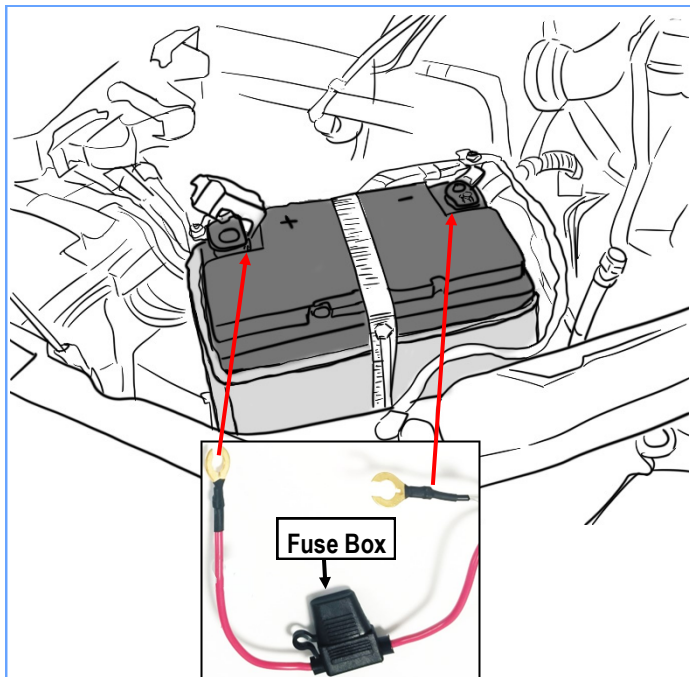
**\*WARNING:** Keeping the fuse connected to the fuse box may result in electrical sparks and risk of shorting when working with the battery.



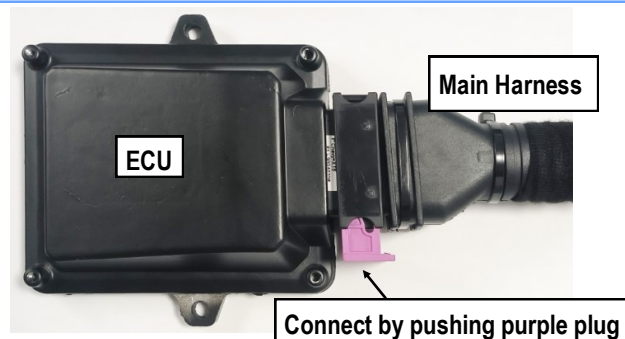
(Fig 7) 25A Fuse and Fuse Box

## STEP 5

Connect the positive power lead on main harness to the positive battery terminal. Connect the negative lead to the negative battery terminal. (Fig 8). Make sure both power leads are fully secured. **Connect the ECU to the main harness. (Fig 9)**



(Fig 8) Positive and Negative Battery Terminals



(Fig 9) ECU AND Main harness Connection

## STEP 6

Route the main harness around the battery, up along the rear of the engine compartment. The Driver-side branch of the main harness must route down the backside, against the fire wall, and down past the steering column towards the vehicle frame. Be sure to avoid contact with the steering column. (Fig 10)

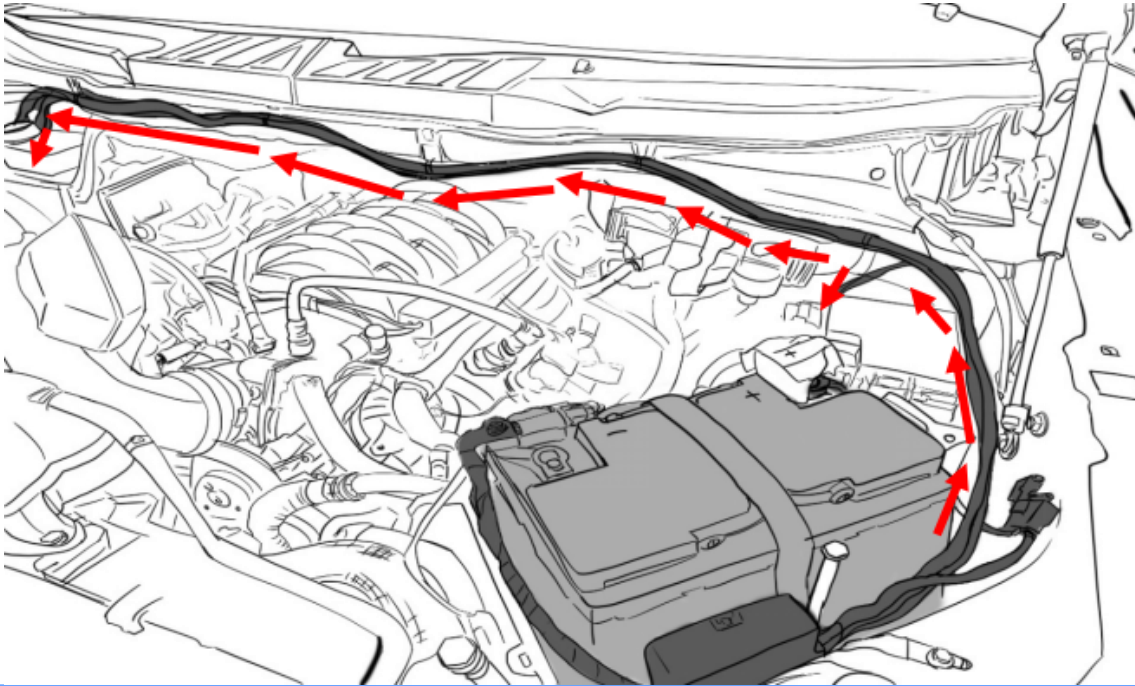
Route the Passenger-side leg of the harness down the Passenger-side wheel well. Be sure to avoid contact with any moving or hot engine components. Attach and secure the main harness



with supplied Zip ties.

**Be sure the harness avoids contact with the suspension and steering column.**

**ECU should be secured near battery or any space away from the direct heat of the engine.**

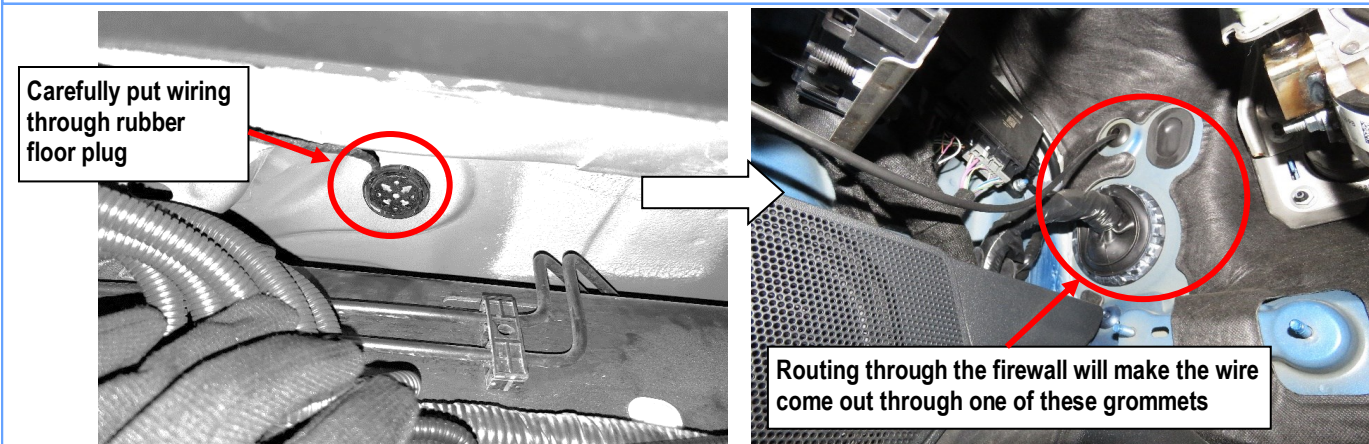


(Fig 10)

## STEP 7

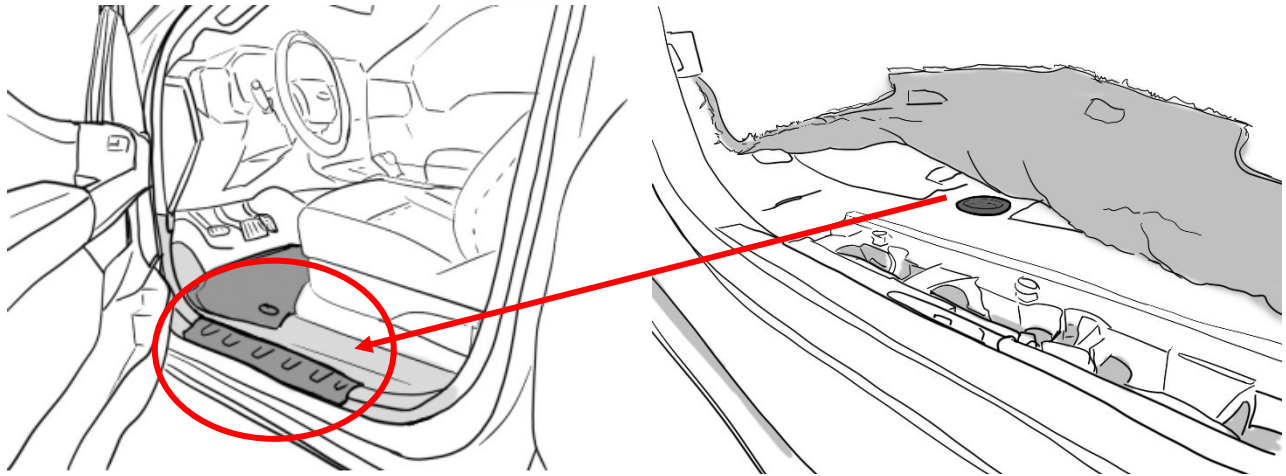
On the underside of the driver side, locate and remove the floor grommet in the floor panel behind the front wheel well. The grommet will be close to the front linkage arm. Poke a hole through the grommet and thread the two signal wires through and up into the vehicle cabin. On some vehicles, it may be necessary to route through the engine bay firewall instead. In these cases, locate an oval grommet on the Driver Side of the firewall, and route through the grommet.

It is recommended to check on the inside of the cab to see where the wire is coming out through.



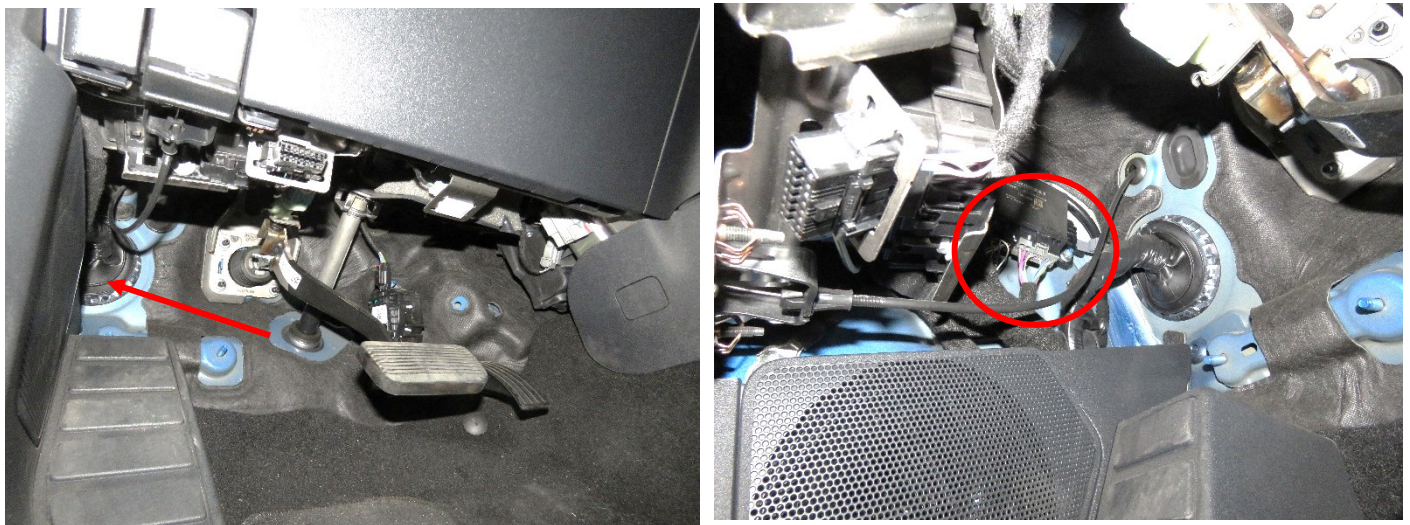
## STEP 8

If routing through floor grommet, remove the driver-side front kick panel and bottom door sill plate. Peel back the carpet to access the hole where the grommet was removed. Feed the wires through.



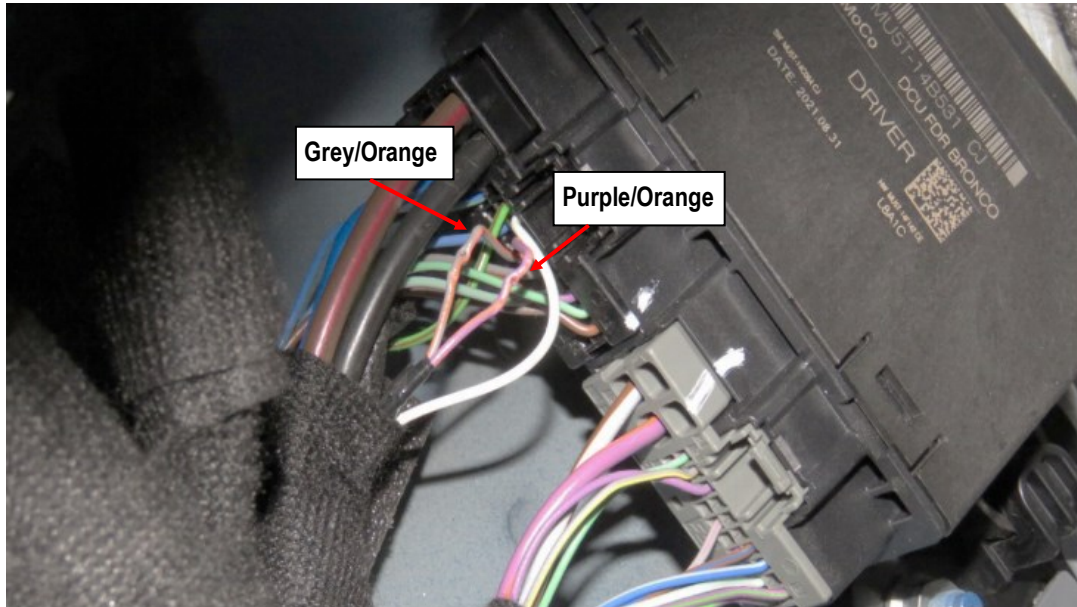
## STEP 9

Locate the black BCM (body control module) under the steering wheel, behind the OBD-II Port and to the left side behind the kick panel. BCM module may be detachable.



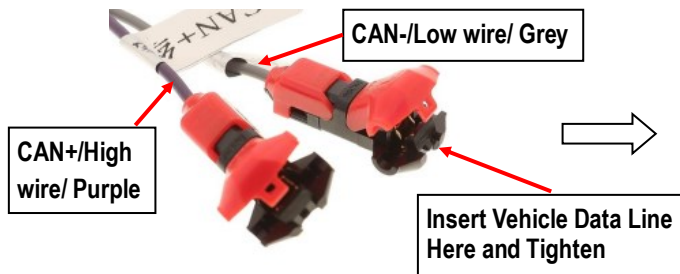


On the black plug of the BCM, identify the Grey/Orange wire and Purple/Orange wire. Connect the Yellow and White signal wires from the Power Step Main Harness using the supplied wire taps. (See next page for details) **(Fig 11)**



Factory CAN Wire	Main harness wire color
Purple w/ Orange (High)	Purple (High)
Grey w/ Orange (Low)	Grey (Low)

**NOTE:** On 2024+ models, the GREY with Orange Stripe wire is now GREEN with Orange Stripe.



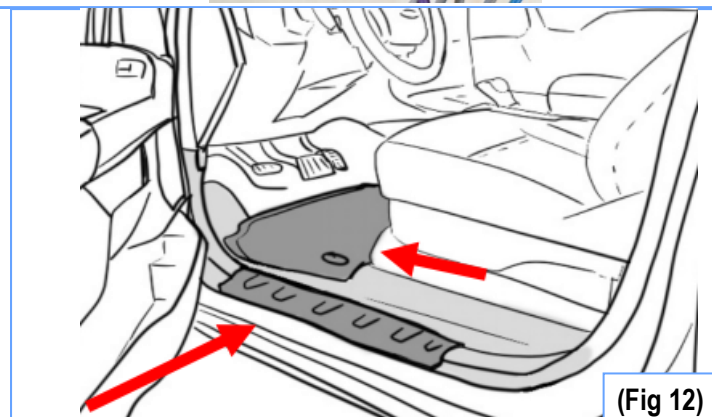
**(Fig 11)**

Example only

## STEP 10

Seal the grommet with RTV Silicone Sealant.

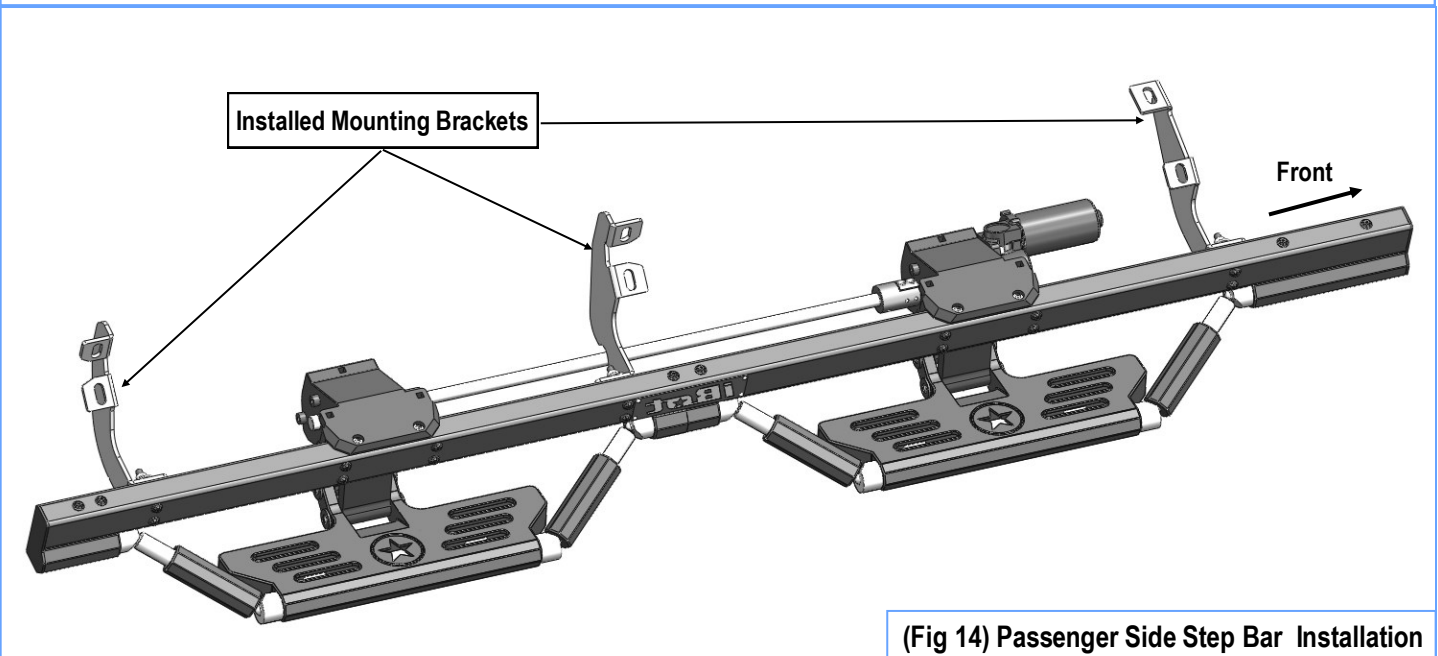
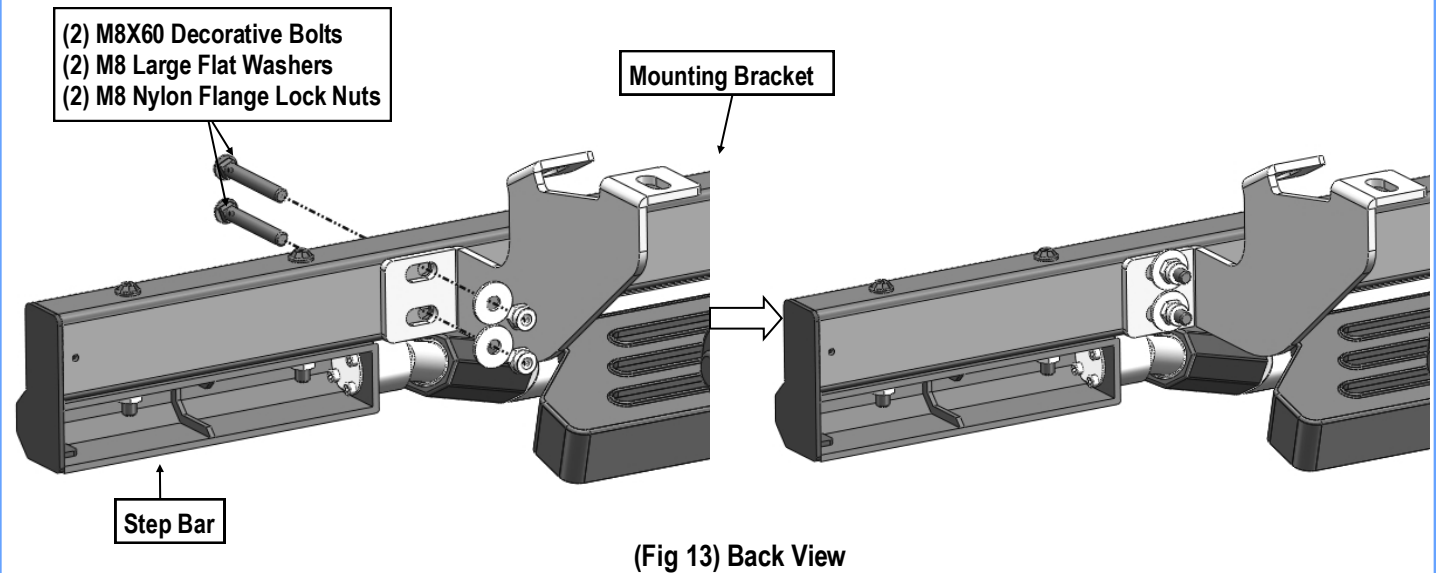
Hide wires and reattach the kick panel with the carpet fully unfurled in its original position. Reattach the door sill panel and check to make sure there are no obstructions or potential snag points around the brake pedal area. **(Fig 12)**



**(Fig 12)**

## STEP 11

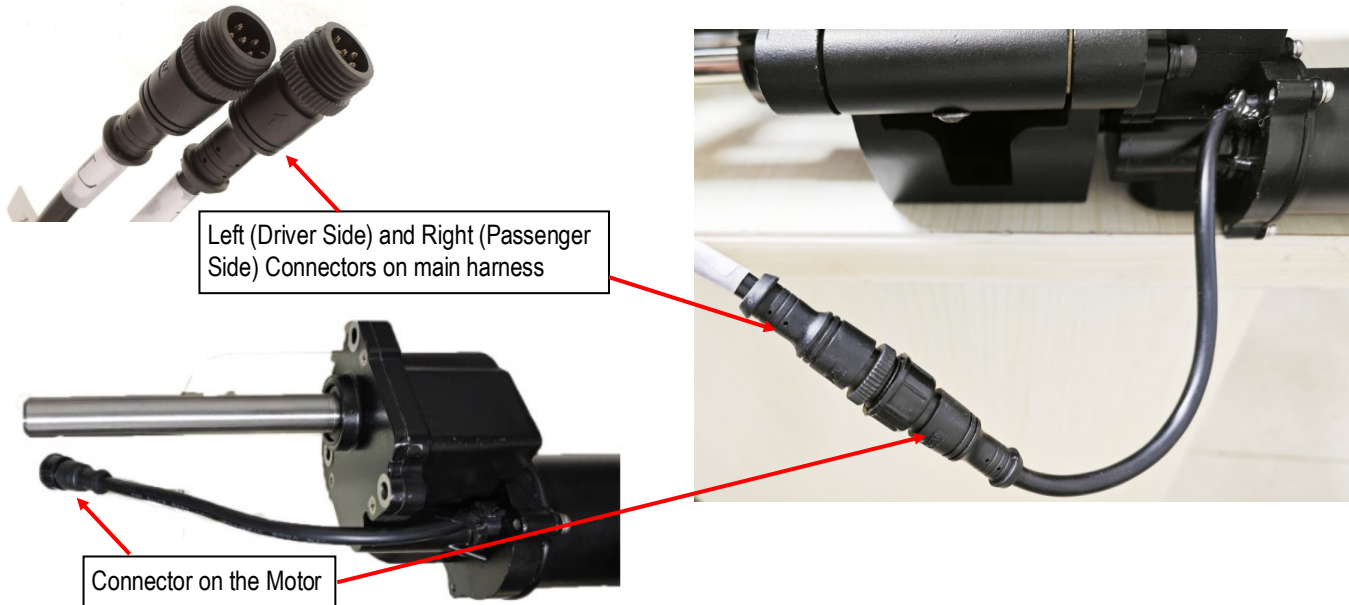
Move to the installation of Step Bars. select and attach the Passenger Side Power Step Board onto the Mounting Brackets with (12) M8 Large Flat Washers, (12) M8 Nylon Flange Lock Nuts and (12) M8 Decorative Bolts, **(Figs 13&14)**. Properly level and adjust the Step Bar and fully tighten all hardware. Repeat for the other side Power Step Installation.





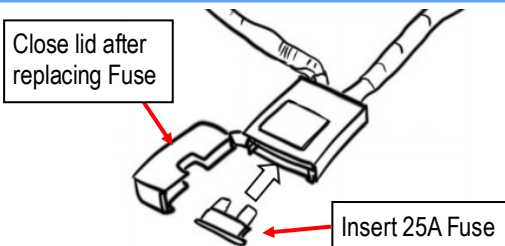
## STEP 12

Connect the harnesses on the Driver Power Step Board and Passenger Power Step Board to the main harness.



## STEP 13

Re-place Fuse into Fuse Box.



## STEP 14

Once the Step Bars are Installed, perform a function check by opening and closing doors several times, make sure the pedals deploy and retract normally. After cycling the step, tighten all hardware on the board and brackets.

Installation complete.

**Note:** If pedal does not move, try to flip the CAN Signal High and Low wires.

### Attention

- Do periodic inspections to the installation to make sure that all hardware is secure and tight.
- In order to protect your bars/boards, please use mild soap/non-abrasive products for cleaning only.
- During severe winter conditions, the electric running board may become frozen and unable to function properly. In such situations, or under other unfavorable conditions that may affect its normal operation, it is recommended to remove the fuse to disconnect the power supply, temporarily disabling the electric running board to prevent potential damage.