

iBot® by APS

PART#: PB-A186

READ INSTRUCTIONS CAREFULLY BEFORE STARTING INSTALLATION. REMOVE CONTENTS FROM BOX AND VERIFY ALL PARTS ARE PRESENT. ASSISTANCE IS RECOMMENDED.

*ROCKER PANEL MOUNT

*TRIMMING/ DRILLING REQUIRED FOR WIRING

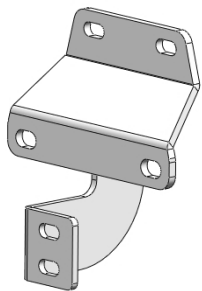
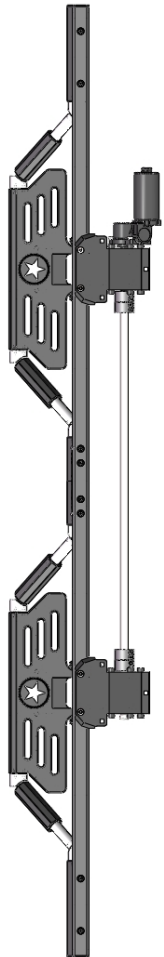
Fastener Size	Tightening Torque (ft-lbs)	Required
6mm	6-7	X
8mm	16-18	√
10mm	31-32	X
12mm	56-58	X
14mm	92-94	X

PART LIST

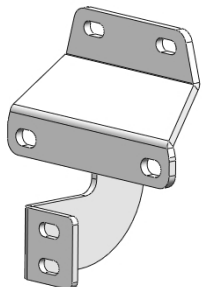
Driver Side Step Bar

Front

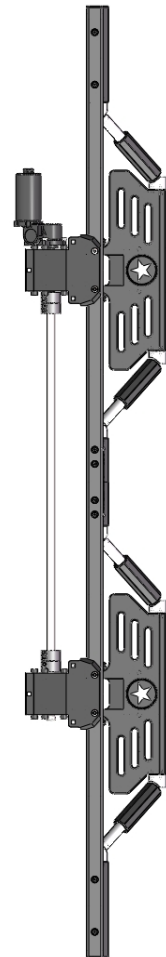
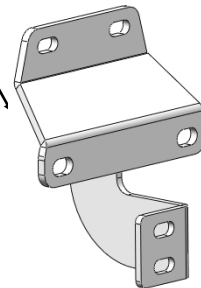
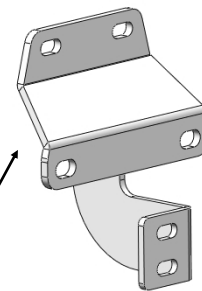
Passenger Side Step Bar





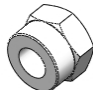
DFM/DRM

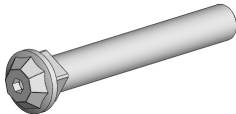

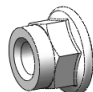





PFM/PRM



Mounting Bracket List					
Item	QTY	Description	Item	QTY	Description
1#	2	Driver Side Mounting Brackets (DFM/DRM)	2#	2	Passenger Side Mounting Brackets (PFM/PRM)

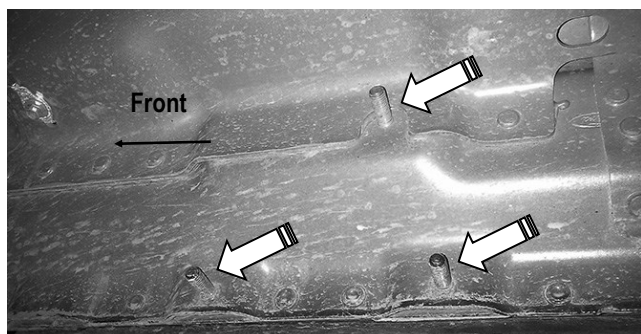
Hardware Package A (For Brackets Installation)					
Item	QTY	Description	Item	QTY	Description
1#	12	M8 Plastic Washers	3#	12	M8 Nylon Lock Nuts
2#	12	M8 Large Flat Washers			
<div style="display: flex; justify-content: space-around; align-items: center;"> <div style="text-align: center;">  1# </div> <div style="text-align: center;">  2# </div> <div style="text-align: center;">  3# </div> </div>					

Hardware Package B (For Step Bars Installation)					
Item	QTY	Description	Item	QTY	Description
1#	8	M8X60 Decorative Bolts	3#	8	M8 Nylon Flange Lock Nuts
2#	8	M8 Large Flat Washers			
<div style="display: flex; justify-content: space-around; align-items: center;"> <div style="text-align: center;">  1 # </div> <div style="text-align: center;">  2 # </div> <div style="text-align: center;">  3 # </div> </div>					

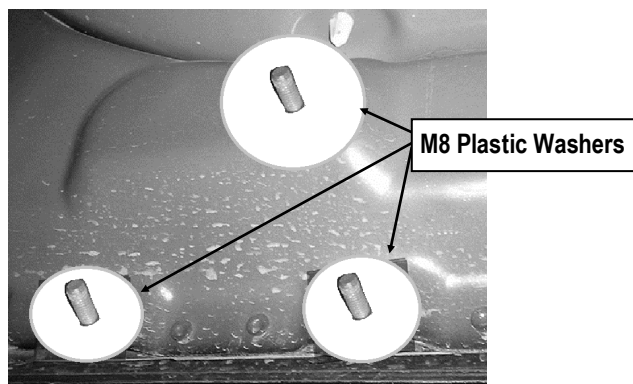
Electrical Accessories					
Item	QTY	Description	Item	QTY	Description
1#	1	Main harness with wire taps	2#	1	ECU (Electronic Control Unit)
3#	15	Zip Ties			
<div style="display: flex; justify-content: space-around; align-items: center;"> <div style="text-align: center;">  1 # </div> <div style="text-align: center;">  2 # </div> <div style="text-align: center;">  3# </div> </div>					

STEP 1

Start the installation under the driver side of the vehicle. Locate the (3) factory studs along the inner side of the body panel, (**Fig 1**). Thread (3) M8 Plastic Washers over the (3) factory mounting studs on the body panel, (**Fig 2**).



(Fig 1) Driver Side Front Mounting Location

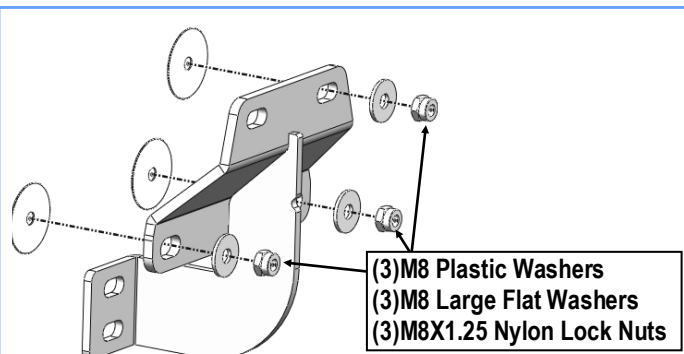


(Fig 2) Thread M8 Plastic Washers onto all mounting studs

STEP 2

Attach (1) Driver Front Mounting Bracket (**DFM/DRM**) to the (3) factory studs with (3) M8 Large Flat Washers and (3) M8X1.25 Nylon Lock Nuts, (**Fig 3**). Do not fully tighten hardware at this time.

Note: All (2) Driver Side Mounting Brackets are universal.



(Fig 3) Driver Front Mounting Bracket Installation

STEP 3

Repeat **Step 2** to install the Driver center Mounting Bracket and Driver Rear Mounting Bracket. Do not fully tighten hardware at this time.

STEP 4

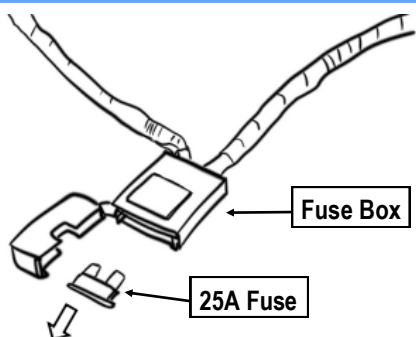
Move to the Passenger Side, repeat Step 1-3 to install Passenger Side Mounting Brackets (**PFM/PRM**).

Note: All (2) Passenger Side Mounting Brackets are universal.

STEP 5

Start from the engine compartment by opening the front hood of the vehicle. Locate the Battery and its terminals (positive/negative). Remove the 25A fuse from the fuse box that comes with the main harness. (**Fig 4**).

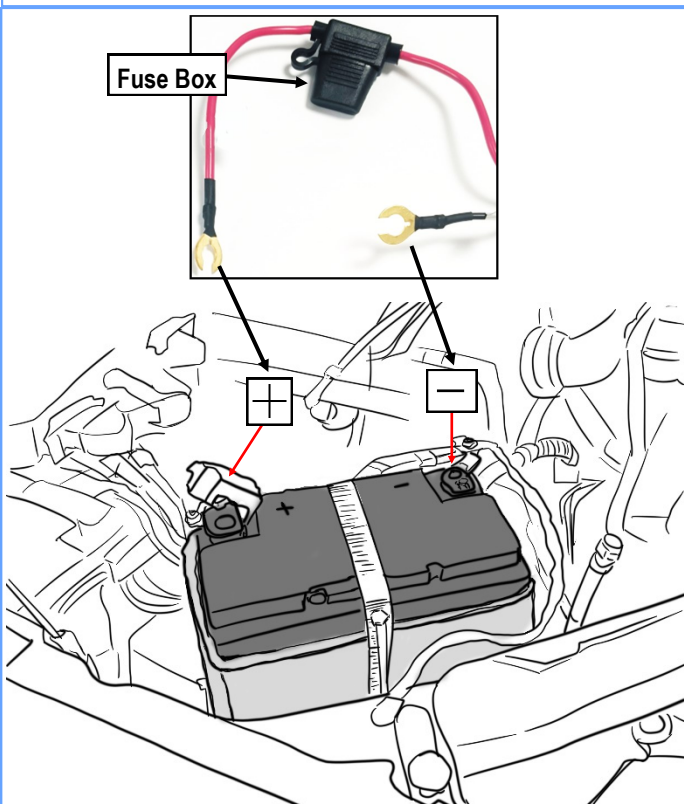
***WARNING:** Keeping the fuse connected to the fuse box may result in electrical sparks and risk of shorting when working with the battery.



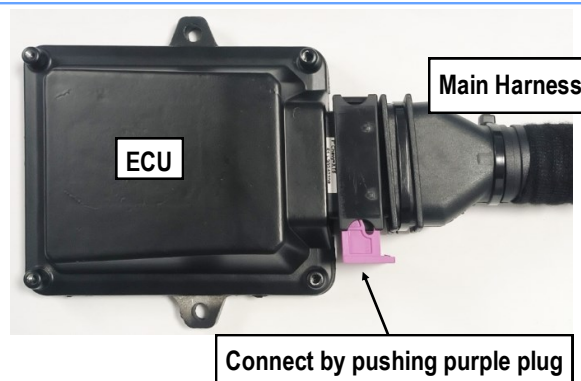
(Fig 4) 25A Fuse and Fuse Box

STEP 6

Connect the positive power lead on main harness to the positive battery terminal. Connect the negative lead to the negative battery terminal. (Fig 5). Make sure both power leads are fully secured. **Connect the ECU to the main harness. (Fig 6)**



(Fig 5) Positive and Negative Battery Terminals



(Fig 6) ECU AND Main harness Connection

STEP 7

Route the main harness around the battery, up along the rear of the engine compartment, and down the Driver-side wheel well. Route the shorter leg of the harness down the Passenger-side wheel well. Be sure to avoid contact with any moving or hot engine components. Attach and secure the main harness with Zip Ties (Fig 7).

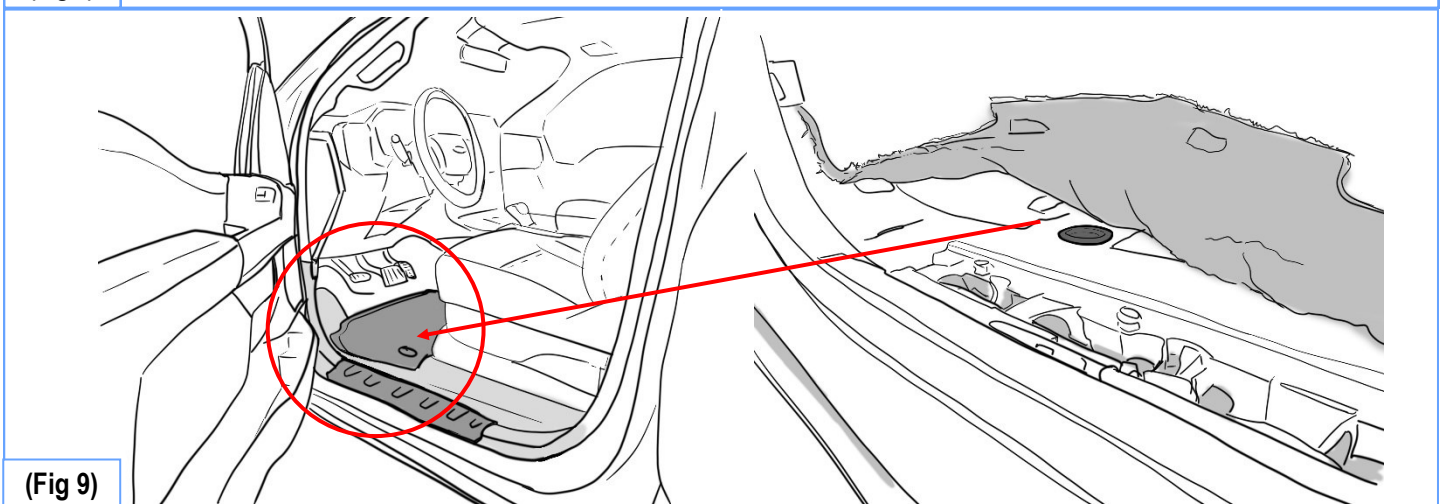
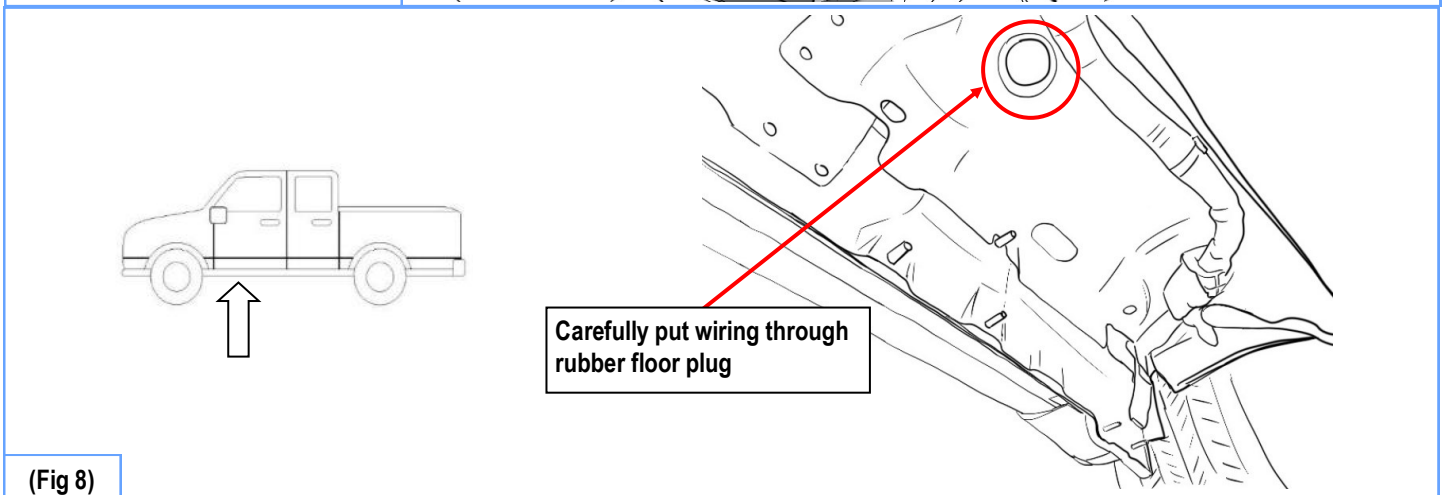
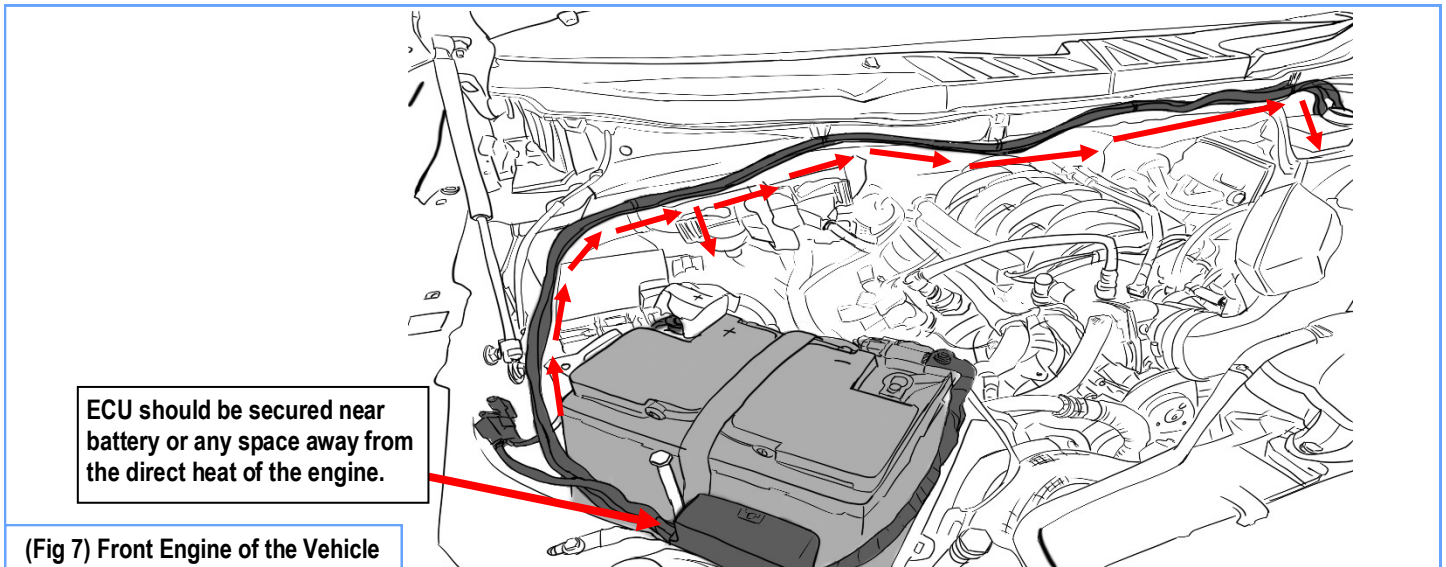
ECU should be secured near battery or any space away from the direct heat of the engine.

STEP 8

On the underside of the driver side, locate and remove the floor grommet in the floor panel behind the front wheel well. The grommet will be close to the front linkage arm. Poke a hole through the grommet and thread the two signal wires through and up into the vehicle cabin. (Fig 8).

STEP 9

Inside the vehicle cabin, remove the driver-side front kick panel and bottom door sill plate. Peel back the carpet to across the hole where the grommet was removed. Feed the wires through. (Fig 9).

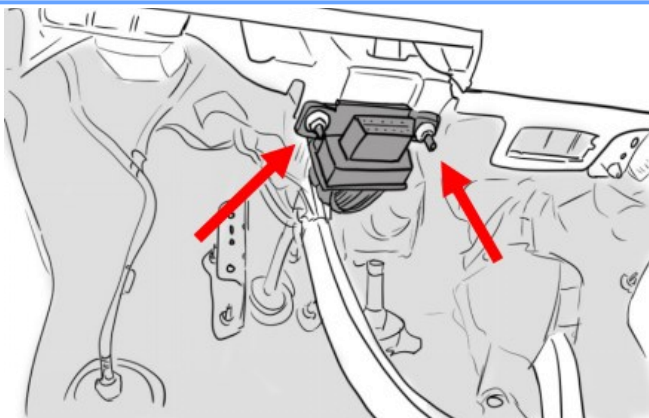


STEP 10

Locate the OBD-II Port under the steering wheel, near the front hood release lever. Unbolt the two flanged nuts using a socket for easier access to the rear side of the connector. **(Fig 10).**

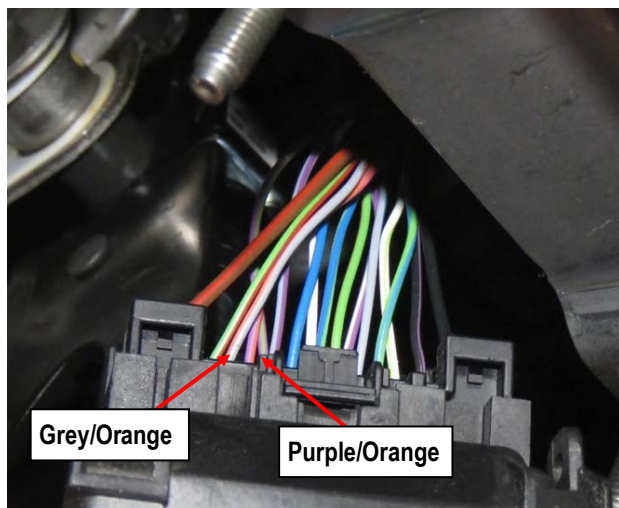
From the rear side of the connector, identify the Grey/Orange wire and Purple/Orange wire. Connect the Yellow and White wires from the Power Step Main Harness using the supplied wire taps.

After successfully connecting the wires, return the connector back into its place, tighten the previously removed nuts, and check that it is secure on the bracket. **(Fig 10).**



From the rear side of the connector, identify the Grey/Orange wire and Purple/Orange wire. Connect the Yellow and White wires from the Power Step Main Harness using the supplied wire taps.

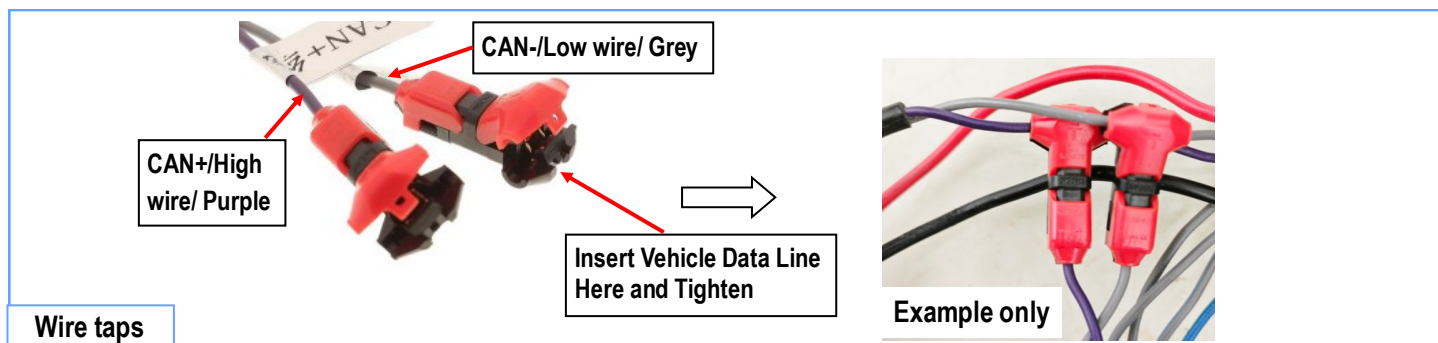
After successfully connecting the wires, return the connector back into its place, tighten the previously removed nuts, and check that it is secure on the bracket.



Factory CAN Wire	Main harness wire color
Grey with Orange Stripe (Low)	Grey (Low)
Purple with Orange Stripe (High)	Purple (High)

***NOTE :** If board does not move during trouble-shooting, flip the CAN Signal High and Low wires.

(Fig 10)

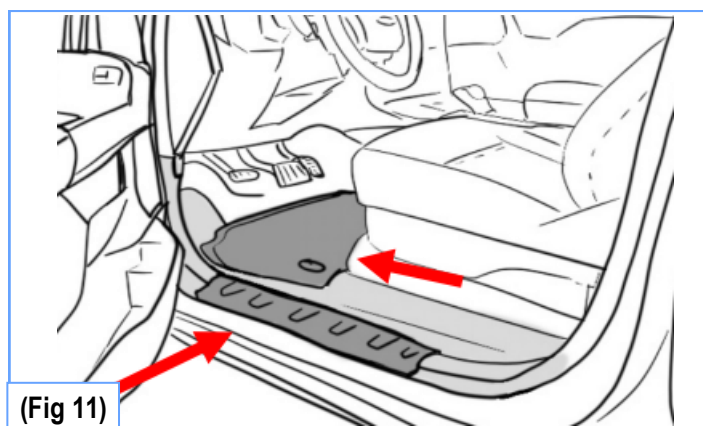


STEP 11

Seal the grommet with RTV Silicone Sealant.

Hide wires and reattach the kick panel with the carpet fully unfurled in its original position. Reattach the door sill panel and check to make sure there are no obstructions or potential snag points around the brake pedal area. **(Fig 11)**

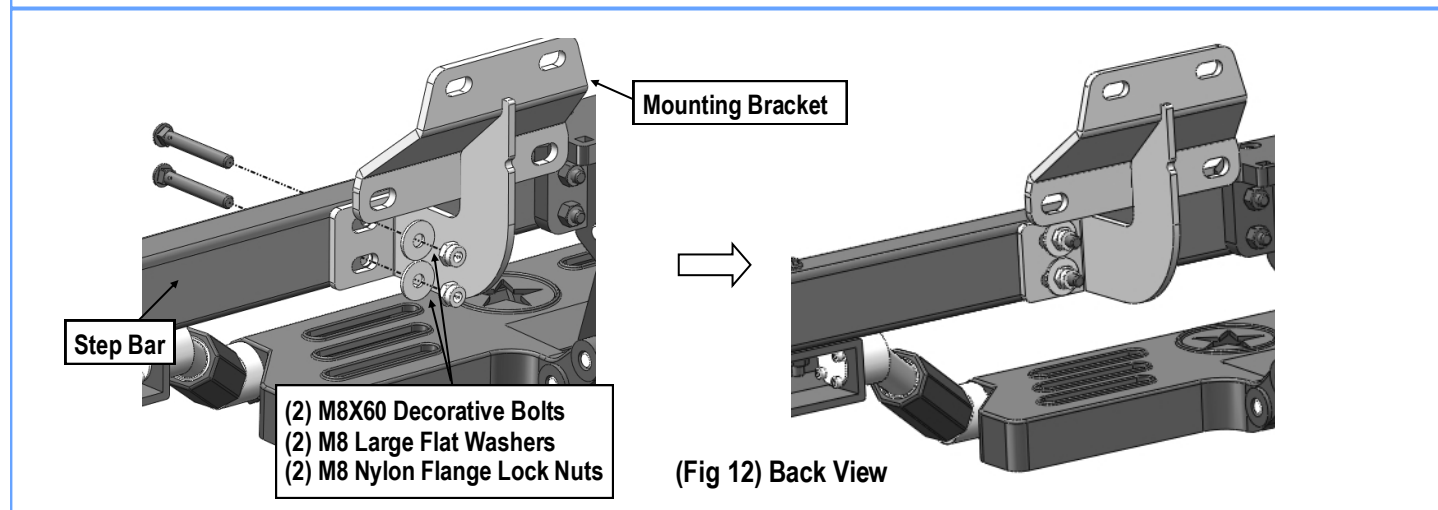
Be sure to reattach plastic kick panel nut.

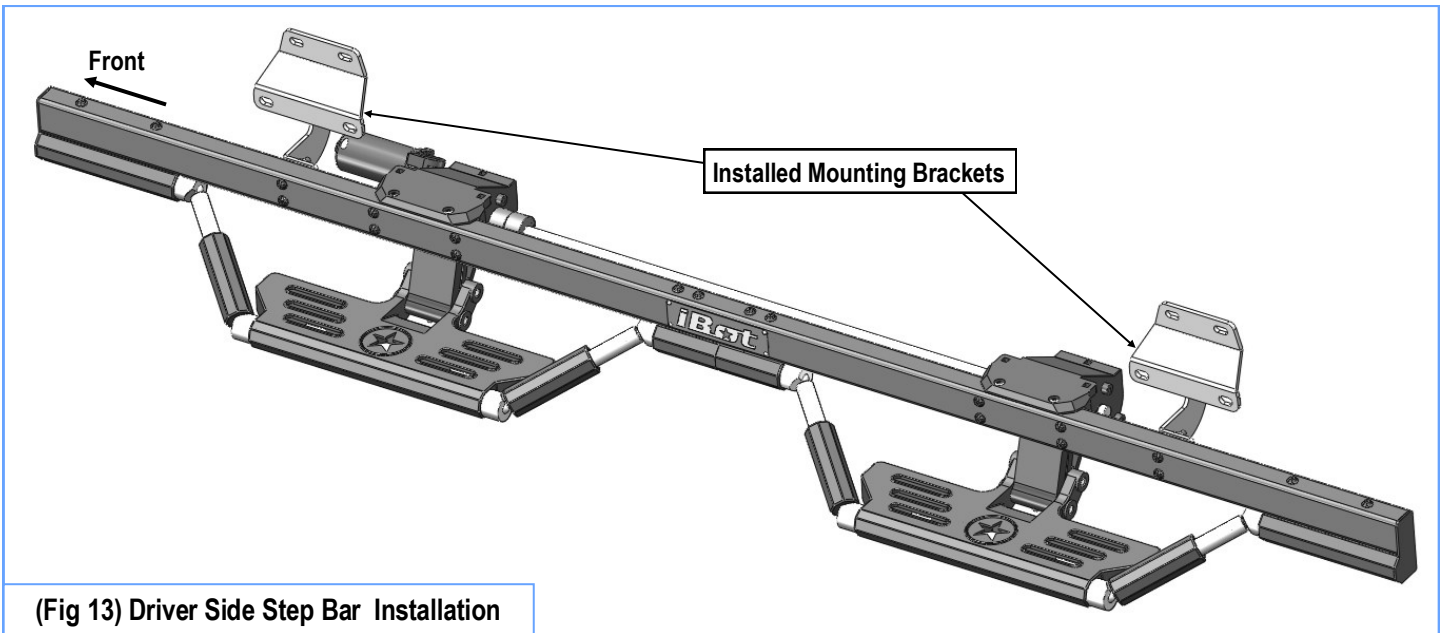


STEP 12

Move to the installation of Step Bars. select and attach the Driver Side Power Step Board onto the Mounting Brackets with (4) M8 Large Flat Washers, (4) M8 Nylon Flange Lock Nuts and (4) M8 Decorative Bolts, **(Figs 12&13)**. Properly level and adjust the Step Bar and fully tighten all hardware.

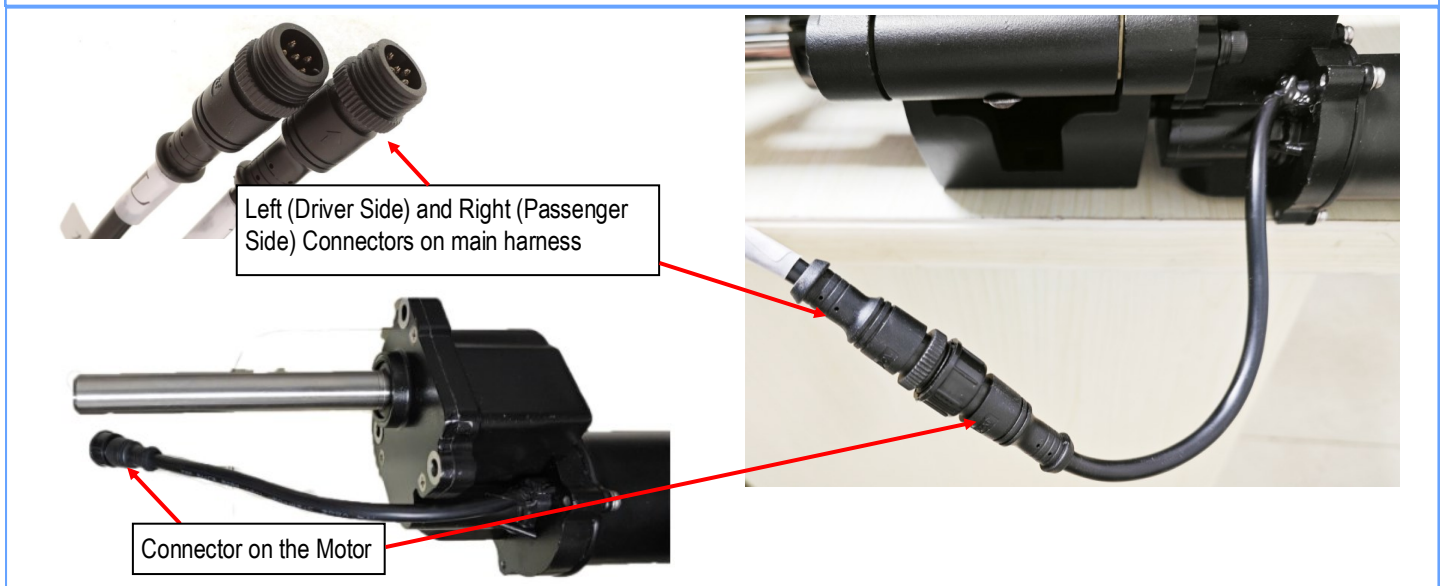
Repeat for the other side Power Step Installation.





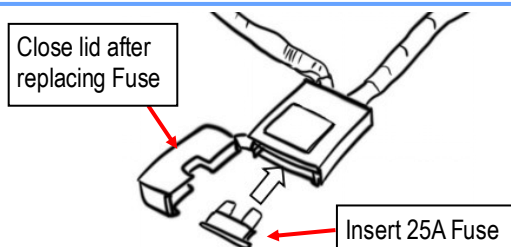
STEP 13

Connect the harnesses on the Driver Power Step Board and Passenger Power Step Board to the main harness.



STEP 14

Re-place Fuse into Fuse Box.



STEP 15

Once the Step Bars are Installed, perform a function check by opening and closing doors several times, make sure the pedals deploy and retract normally. After cycling the step, tighten all hardware on the board and brackets.

Installation complete.

Note: If pedal does not move, try to flip the CAN Signal High and Low wires.

Attention

- Do periodic inspections to the installation to make sure that all hardware is secure and tight.
- In order to protect your bars/boards, please use mild soap/non-abrasive products for cleaning only.
- During severe winter conditions, the electric running board may become frozen and unable to function properly. In such situations, or under other unfavorable conditions that may affect its normal operation, it is recommended to remove the fuse to disconnect the power supply, temporarily disabling the electric running board to prevent potential damage.