



iBoard® by APS

PART#: IB-097[L,S]

READ INSTRUCTIONS CAREFULLY BEFORE
STARTING INSTALLATION. REMOVE CONTENTS
FROM BOX AND VERIFY ALL PARTS ARE PRE-
SENT. ASSISTANCE IS RECOMMENDED.

*ROCKER PANEL MOUNT
*NO DRILLING REQUIRED

Fastener Size	Tightening Torque (ft-lbs)	Required
6mm	6-7	√
8mm	16-18	√
10mm	31-32	√
12mm	56-58	X
14mm	92-94	X

PART LIST

Driver Front Mounting
Bracket (DFM)

Front
↑

Passenger Front Mounting
Bracket (PFM)

Driver Center Mounting
Bracket (DCM)

Passenger Center Mounting
Bracket (PCM)

Driver Rear Mounting
Bracket (DRM)

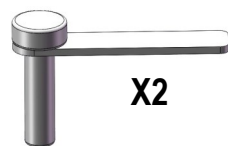
Passenger Rear Mounting
Bracket (PRM)

Driver Rear Bar
Bracket (DRB)

Passenger Rear Bar
Bracket (PRB)



Hardware Package A (For Bracket Installation)



X2

M10X35 Bolt Plate



X2

M10 Plastic Washer



X4

M10X1.5-30mm
Hex Bolt



X12

M10 Flat Washer



X6

M10 Lock Washer



X6

M10 Hex Nut



X12

M8X1.25-30mm
Hex Bolt



X12

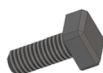
M8 Flat Washer



X12

M8 Lock Washer

Hardware Package B (For Aluminum Step Bar Installation Only, Not Supply to Stainless Steel Step Bar)



X20

M6X1-20mm Square Head Bolt



X20

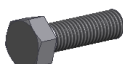
M6 Large Flat Washer



X20

M6 Nylon Lock Nut

Hardware Package C (For Stainless Steel Step Bar Installation Only, Not Supply to Aluminum Step Bar)



X20

M6X1-20mm Hex Bolt



X20

M6 Lock Washer



X20

M6 Flat Washer

STEP 1

Start the installation from the driver side of the vehicle, remove the existing (2) factory bolts, (or plastic plugs), on the side panel located by the front tire opening, **(Fig 1)**. This will be the mounting location for the driver side front Mounting Bracket.

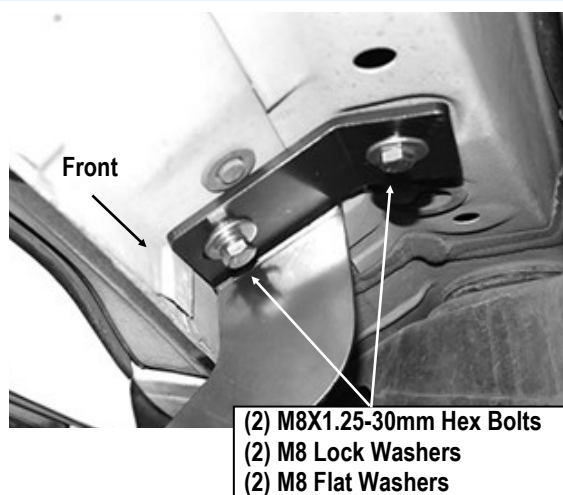


(Fig 1) Driver Side Front Mounting Location



STEP 2

Select the Driver Front Mounting Bracket (**DFM**). Attach the Bracket to the vehicle using the included (2) M8X1.25-30mm Hex Bolts, (2) M8 Lock Washers and (2) M8 Flat Washers. Don't fully tighten at this time, (**Fig 2**).



(Fig 2) Driver Front Mounting Bracket Installed

STEP 3

Move along the side panel to the driver side center mounting location, (**Fig 3**). Repeat **Steps 1-2** to install the Driver Center Mounting Bracket (**DCM**), (**Fig 4**).

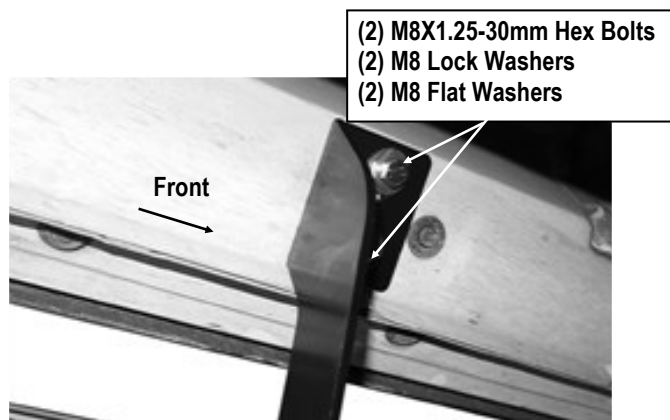
STEP 4

Next, move to the 4th mounting location at the back of the cab. Repeat **Steps 1-2** to install the Driver Center Mounting Bracket (**DCM**).

IMPORTANT: There are (4) mounting locations along the side of the vehicle. Installation will use the 1st, 2nd and 4th mounting locations only.



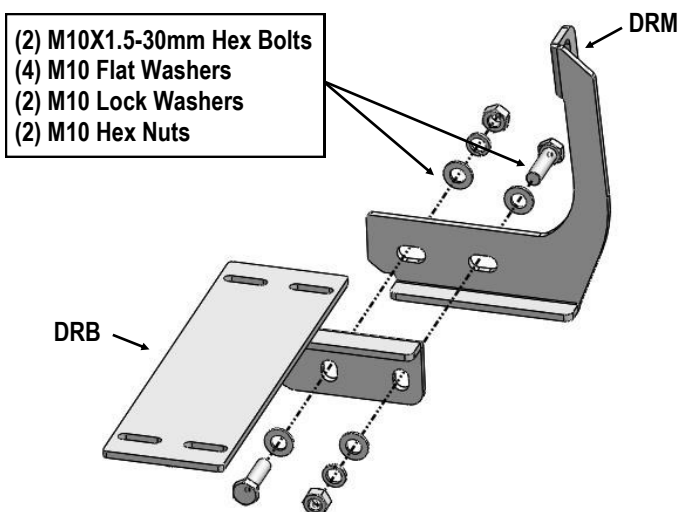
(Fig 3) Driver Side Center Mounting Location



(Fig 4) Driver Center Mounting Bracket Installed

STEP 5

Assemble (1) Driver Rear Mounting Bracket (**DRM**) and (1) Driver Rear Bar Bracket (**DRB**) with (2) M10X1.5-30mm Hex Bolts, (2) M10 Lock Washers, (4) M10 Flat Washers and (2) M10 Hex Nuts, (**Fig 5**). Do not fully tighten hardware at this time.



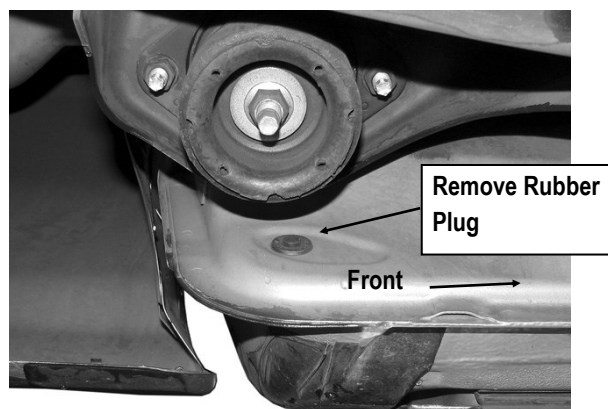
(Fig 5) Driver Rear Brackets Assembly

STEP 6

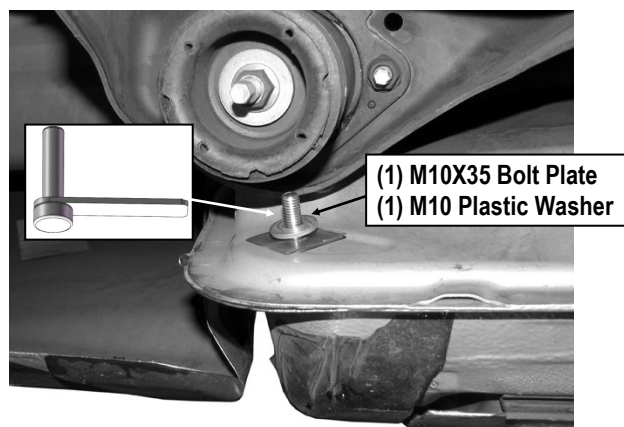
Move to the very end of the cab. Locate and remove the rubber plug in the side of the inner body panel, (Fig 6). Select (1) M10X35 Bolt Plate and (1) M10 Plastic Washer, insert the Bolt Plate into the hole and thread the Plastic Washer down onto the Bolt Plate until it is tight against the body panel, (Fig 7).

NOTE: The Plastic Washer is designed to prevent the Bolt Plate from falling into the body panel and to aid Support Bracket installation.

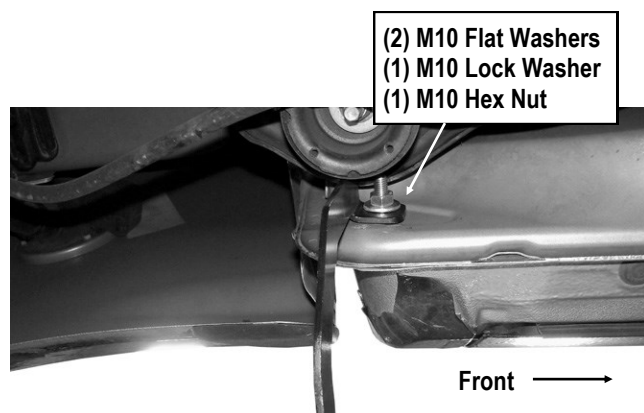
Select (1) M10 Flat Washer and slide it onto the threaded end of the Bolt Plate over the Plastic Washer, (Fig 8). Next, secure the assembled driver rear bracket to the Bolt Plate with (1) M10 Flat Washer, (1) M10 Lock Washer and (1) M10 Hex Nut, (Fig 8). Do not fully tighten hardware at this time.



(Fig 6) Driver Side Rear Mounting Location



(Fig 7) Insert The M10X35 Bolt Plate



(Fig 8) Driver Rear Mounting Bracket Installed



STEP 7

Once all (4) mounting brackets are installed, then proceed to the Step Bar installation. According to the style of Step Bar proceed to the correct installation STEPS.

Note: Aluminum Step Bar refer to STEP 8; Stainless Steel Step Bar skip to STEP 9.

STEP 8

Aluminum Step Bar Installation:

Select a **Aluminum Step Bar**. Slip (5) M6x1-20 Square Head Bolts into each bottom channel (**Fig 9**). Carefully position the Step Bar onto the (4) Mounting Brackets. **IMPORTANT:** Do not slide the Step Bar on the Brackets or the bottom surface of the board will be damaged.

Attach the Running Board to Front & Center Mounting Brackets with (2) M6X1-20mm Square Head Bolts, (2) M6 Flat Washers and (2) M6 Nylon Lock Nuts (**Fig 10**).

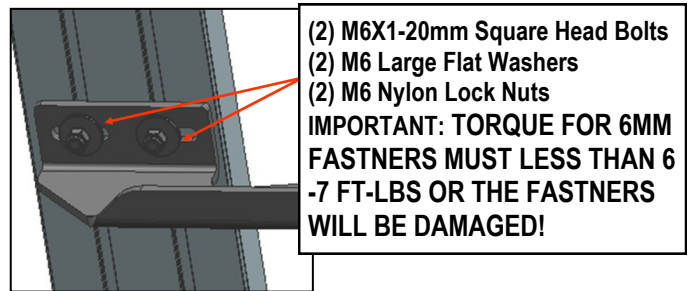
Attach the Running Board to Rear Bar Bracket with (4) M6X1-20mm Square Head Bolts, (4) M6 Flat Washers and (4) M6 Nylon Lock Nuts (**Fig 11**). Do not tighten hardware at this time.

Level and adjust the Step Bar and fully tighten all hardware.

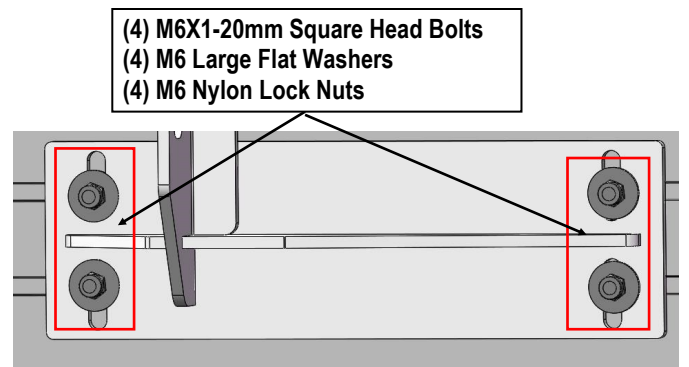
Repeat **Steps 1-8** for the other side Step Bar installation. **The installation is completed!!!**



(Fig 9) Slip M6X1-20mm Square Head Bolts Into The Bottom Channels



(Fig 10) Running Board Installed Onto Mounting Bracket (Front & Center Mounting Bracket)



(Fig 11) Running Board Installed onto Rear Bar Bracket

STEP 9

Stainless Steel Step Bar Installation:

Select a **Stainless Steel Step Bar** (with the U-Sliders installed on the Bar). Loose the U-Sliders, reposition the U-Sliders onto the board according to the (4) Installed Mounting Brackets location, (**Fig 12**). Re-secure the U-Sliders on the Step Bar. Attach the Step Bar to the installed Front & Center Mounting Brackets with (6) M6X1-20mm Hex Bolts, (6) M6 Large Flat Washers & (6) M6 Lock Washers, (**Fig 13**). Attach the Step Bar to Rear Bar Bracket with (4) M6X1-20mm Hex Bolts, (4) M6 Large Flat Washers & (4) M6 Lock Washers, (**Fig 14**). Do not tighten hardware at this time.

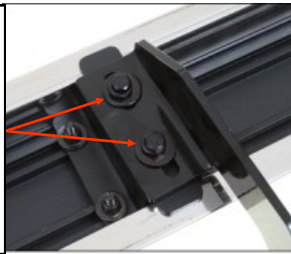
Level and adjust the Step Bar and fully tighten all hardware.

Repeat **Steps 1-7 and 9** for the other side Step Bar installation. **The installation is completed!!!**



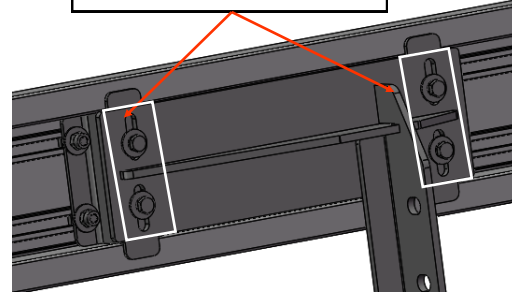
(Fig 12) Slide & line up the U-Slider with the installed mounting brackets along bottom channel

(2) M6X1-20mm Hex Bolts
(2) M6 Large Flat Washers
(2) M6 Lock Washers
IMPORTANT: TORQUE FOR 6MM FASTNERS MUST LESS THAN 6-7 FT-LBS OR THE FASTNERS WILL BE DAMAGED!



(Fig 13) Step Bar Installed on Bracket Installed (Example)

(4) M6X1-20mm Hex Bolts
(4) M6 Large Flat Washers
(4) M6 Lock Washers



(Fig 14) Step Bar Installed onto Rear Bar Bracket (Example)

Attention

Do periodic inspections to the installation to make sure that all hardware is secure and tight.

In order to protect your bars/boards, please use mild soap/non-abrasive products for cleaning only.