



iBoard® Series

INSTALLATION INSTRUCTIONS

PART#: IB-P058S Y&H

BEFORE INSTALLATION

REMOVE CONTENTS FROM BOX. VERIFY ALL PARTS ARE PRESENT. READ INSTRUCTIONS CAREFULLY BEFORE STARTING INSTALLATION. ASSISTANCE IS RECOMMENDED. THANK YOU FOR CHOOSING OUR PRODUCT!

***ROCKER PANEL MOUNT**

***NO DRILLING REQUIRED**

Torque Value

| Fastener Size | Tightening Torque (ft-lbs) | Required |
|---------------|----------------------------|----------|
| 6mm | 6-7 | X |
| 8mm | 16-18 | √ |
| 10mm | 31-32 | X |
| 12mm | 56-58 | X |
| 14mm | 92-94 | X |



Scan for
Installation Video

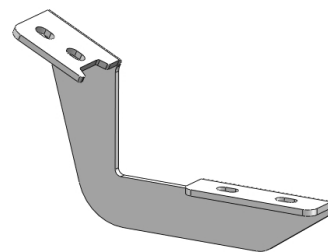
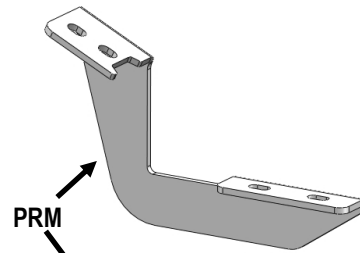
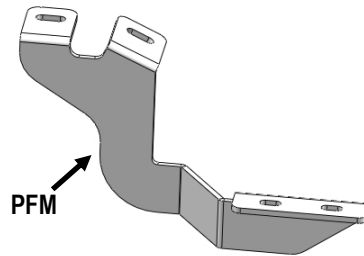
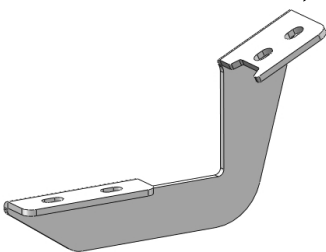
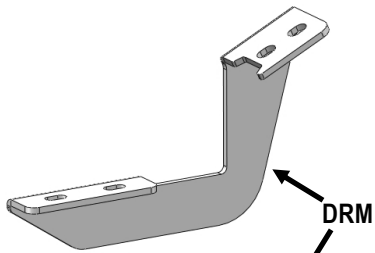
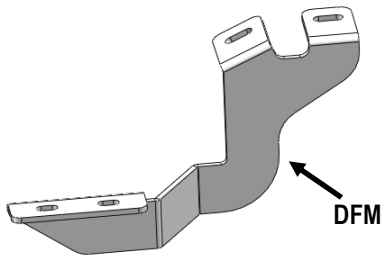
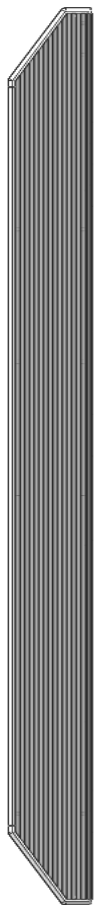
| Mounting Bracket List | | | |
|-----------------------|-----|---------------|--|
| Item | QTY | Bracket Label | Description |
| 1# | 1 | DFM | Mounting Bracket for Driver Front |
| 2# | 2 | DRM | Mounting Bracket for Driver Center / Rear |
| 3# | 1 | PFM | Mounting Bracket for Passenger Front |
| 4# | 2 | PRM | Mounting Bracket for Passenger Center / Rear |

PART LIST

Front
↑

Driver Side Step Bar


Passenger Side Step Bar






Hardware Package A (For Bracket Installation)


| Item | QTY | Description | Item | QTY | Description |
|------|-----|------------------------|------|-----|-----------------|
| A1 | 12 | M8X1.25-25mm Hex Bolts | A3 | 12 | M8 Lock Washers |
| A2 | 12 | M8 Large Flat Washers | | | |



A1



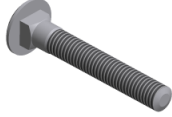
A2




A3

Hardware Package B (For Stainless Steel Step Bar Installation)


| Item | QTY | Description | Item | QTY | Description |
|------|-----|-----------------------------|------|-----|---|
| B1 | 12 | M8X1.25-35mm Carriage Bolts | B3 | 12 | M8 Nylon Lock Nuts |
| B2 | 12 | M8 Large Flat Washers | B4 | 6 | Sliders (Packed with Mounting Brackets) |




B1



B2



B3

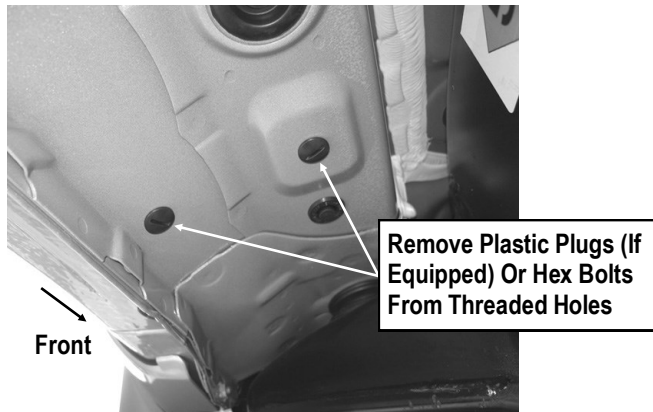


B4



STEP 1

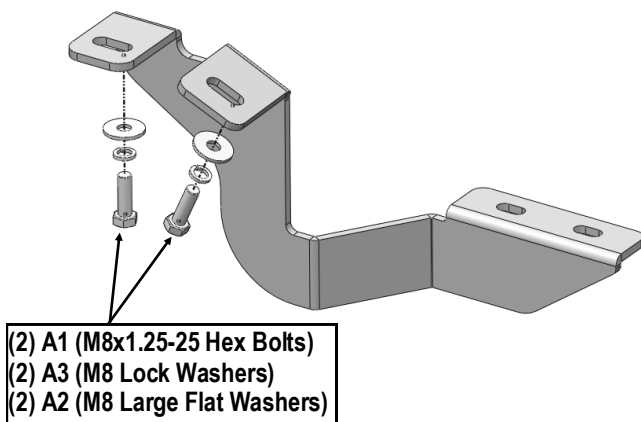
Start installation from the driver side front of the vehicle, remove the existing (2) factory bolts, (or plastic plugs) (**Fig 1**). This will be the mounting location for the Driver Front Mounting Bracket.



(Fig 1) Driver Side Front Mounting Location

STEP 2

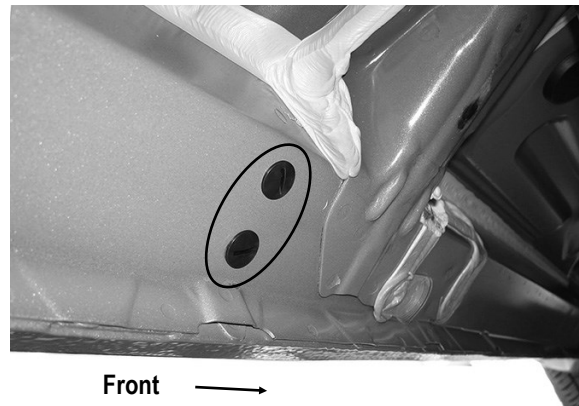
Select the Driver Front Mounting Bracket, attach the Bracket to the vehicle using the included (2) A1 (M8x1.25-25 Hex Bolts), (2) A3 (M8 Lock Washers) and (2) A2 (M8 Large Flat Washers), (**Fig 2**). Do not fully tighten hardware at this time.



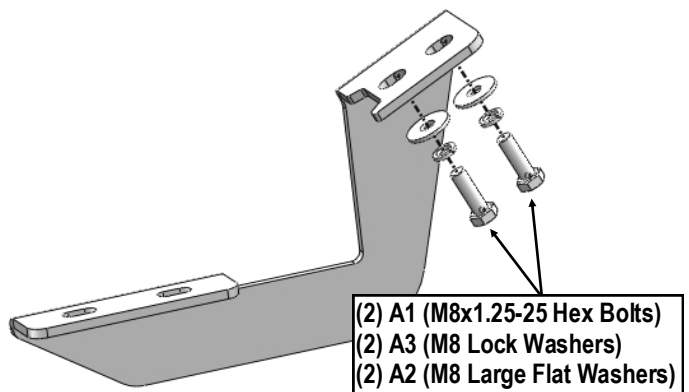
(Fig 2) Driver Front Mounting Bracket Installation

STEP 3

Move along the side panel to the Driver Side Center Mounting Location, (**Fig 3**). Repeat **Step 2** to install the Driver Center Mounting Bracket, (**Fig 4**).



(Fig 3) Driver Center & Rear Mounting Locations (Example Only)



(Fig 4) Driver Center Mounting Bracket Installation

STEP 4

Move along the side panel to the Driver Side Rear Mounting Location. Repeat **Step 3** to install the Driver Rear Mounting Bracket.

Note: Driver Center Mounting Bracket and Driver Rear Mounting Bracket are Universal.



STEP 3

Once all (3) Driver side mounting brackets are installed, then proceed to the Step Bar installation. **(Figs 5 & 6)**

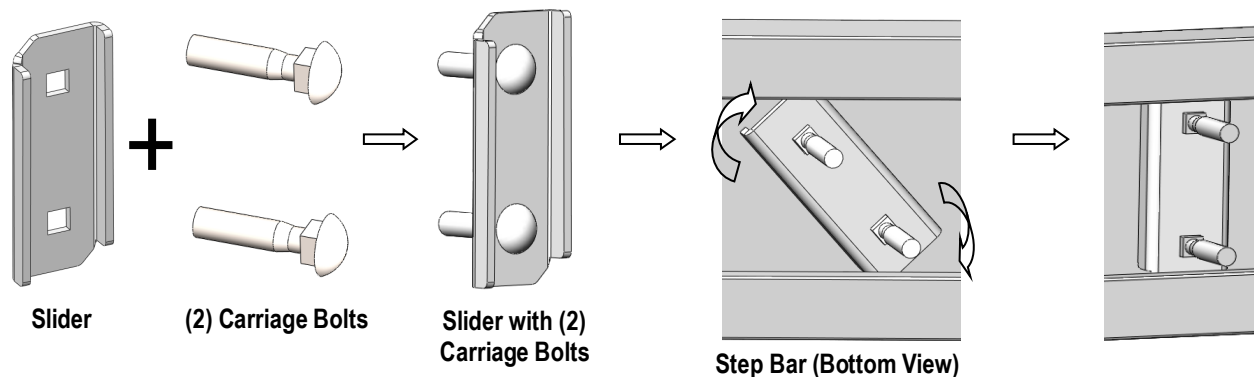
- (1) Select (1) B4 (Slider) and (2) B1 (M8X1.25-35 Carriage Bolts);
- (2) Install (2) B1 (M8X1.25-35 Carriage Bolts) in (1) B4 (Slider).
- (3) Slide the Slider (with carriage bolts) to the **Step Bar**.
- (4) Repeat to install the other (2) B4 (sliders) to the step bar.
- (5) Attach the Step Bar (with the Sliders) onto the installed mounting brackets. Position the Sliders to the installed brackets. Secure the Step Bar to the installed Brackets by using (6) B2 (M8 Large Flat Washers) and (6) B3 (M8 Nylon Lock Nuts) and (3) B4 (Sliders), **(Fig 5)**. Do not fully tighten hardware at this time.

Note: The Sliders are packed with the Mounting Brackets.
Level and adjust the Step Bar and fully tighten all hardware.
Repeat **Steps 1-3** for the other side Step Bar installation. **The installation is completed!!!**

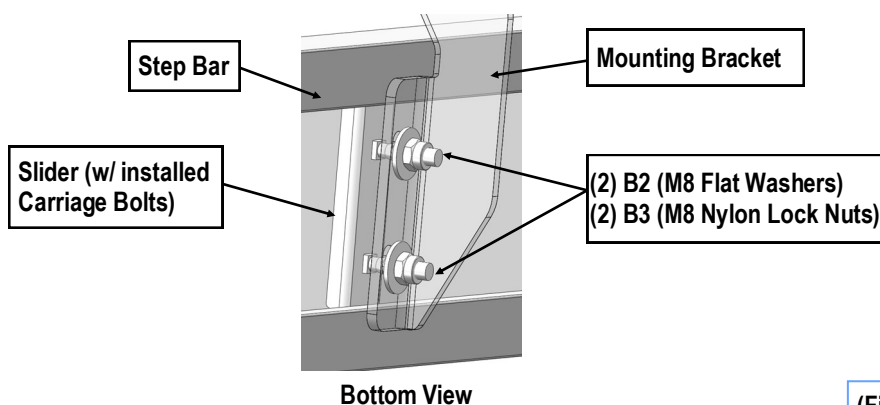
Attention

Do periodic inspections to the installation to make sure that all hardware is secure and tight.

In order to protect your bars/boards, please use mild soap/non-abrasive products for cleaning only.



(Fig 5) Slider Installation



(Fig 6) Step Bar Installation