



iBoard® Series

INSTALLATION INSTRUCTIONS

PART#: IB-P056L Y&H

BEFORE INSTALLATION

REMOVE CONTENTS FROM BOX. VERIFY ALL PARTS ARE PRESENT. READ INSTRUCTIONS CAREFULLY BEFORE STARTING INSTALLATION. ASSISTANCE IS RECOMMENDED. THANK YOU FOR CHOOSING OUR PRODUCT!

***ROCKER PANEL MOUNT**

***NO DRILLING REQUIRED**

Torque Value

Fastener Size	Tightening Torque (ft-lbs)	Required
6mm	6-7	X
8mm	16-18	√
10mm	31-32	X
12mm	56-58	X
14mm	92-94	X

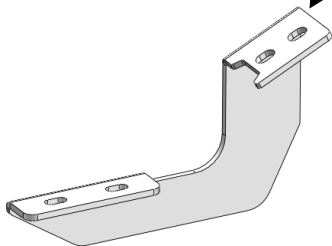
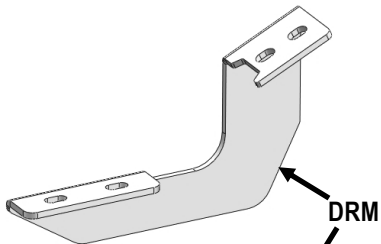
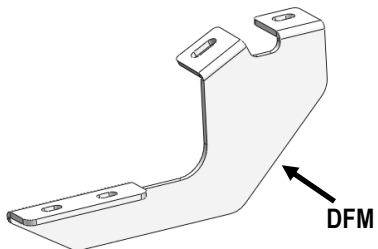
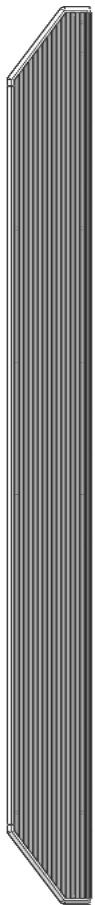


Scan for
Installation Video

Mounting Bracket List			
Item	QTY	Bracket Label	Description
1#	1	DFM	Mounting Bracket for Driver Front
2#	2	DRM	Mounting Bracket for Driver Center / Rear
3#	1	PFM	Mounting Bracket for Passenger Front
4#	2	PRM	Mounting Bracket for Passenger Center / Rear

PART LIST

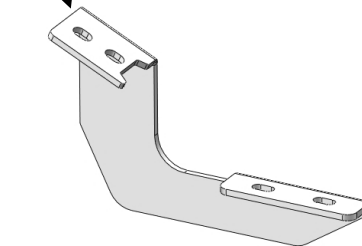
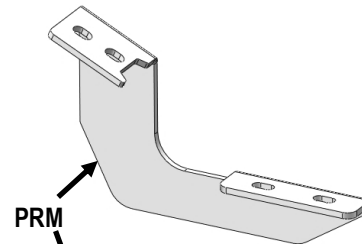
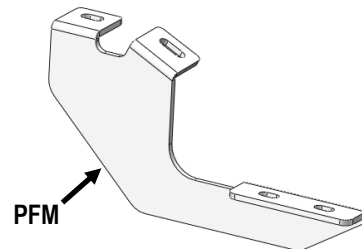
Driver Side Step Bar



Front



Passenger Side Step Bar







Scan for
Installation Video

Hardware Package A (For Bracket Installation)


Item	QTY	Description	Item	QTY	Description
A1	12	M8X1.25-25mm Hex Bolts	A3	12	M8 Lock Washers
A2	12	M8 Flat Washers			



A1



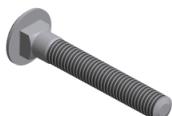
A2




A3

Hardware Package B (For Stainless Steel Step Bar Installation)


Item	QTY	Description	Item	QTY	Description
B1	12	M8X1.25-35mm Carriage Bolts	B3	12	M8 Nylon Lock Nuts
B2	12	M8 Large Flat Washers	B4	6	Sliders (Packed with Mounting Brackets)




B1



B2



B3

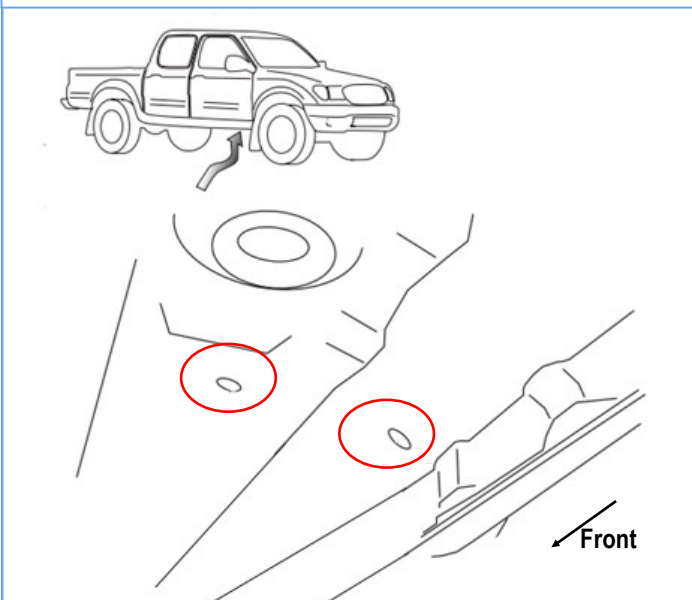


B4

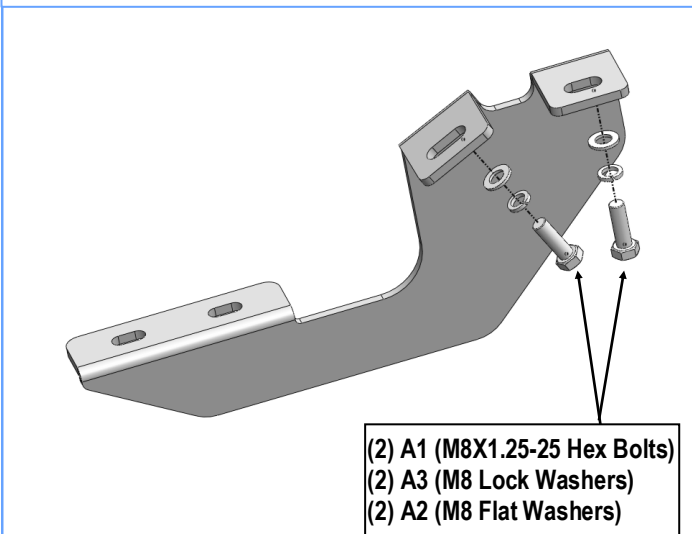


STEP 1

Starting on the passenger side front of the vehicle, (**Fig 1**). Select the Passenger Front Mounting Bracket (**PFM**), attach the Mounting Bracket with (2) A1 (M8X1.25-25 Hex Bolts), (2) A3 (M8 Lock Washers) and (2) A2 (M8 Flat Washers), (**Fig 2**). Do not fully tighten hardware at this time.



(Fig 1) Passenger Front Mounting Location

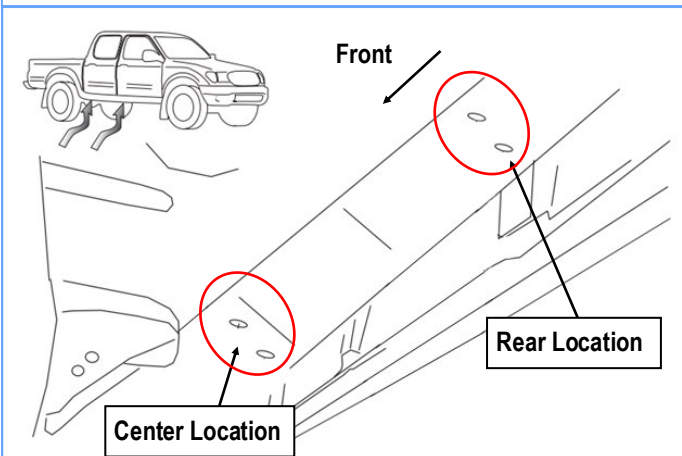


(Fig 2) Passenger Front Mounting Bracket Installation

STEP 2

Next, move to the passenger side center & rear mounting locations, (**Fig 3**). Repeat **Step 1** to install the Passenger Center Mounting Bracket (**PRM**) & Passenger Rear Mounting Bracket (**PRM**). Do not fully tighten hardware at this time.

Note: Passenger Center & Rear Mounting Brackets are universal.



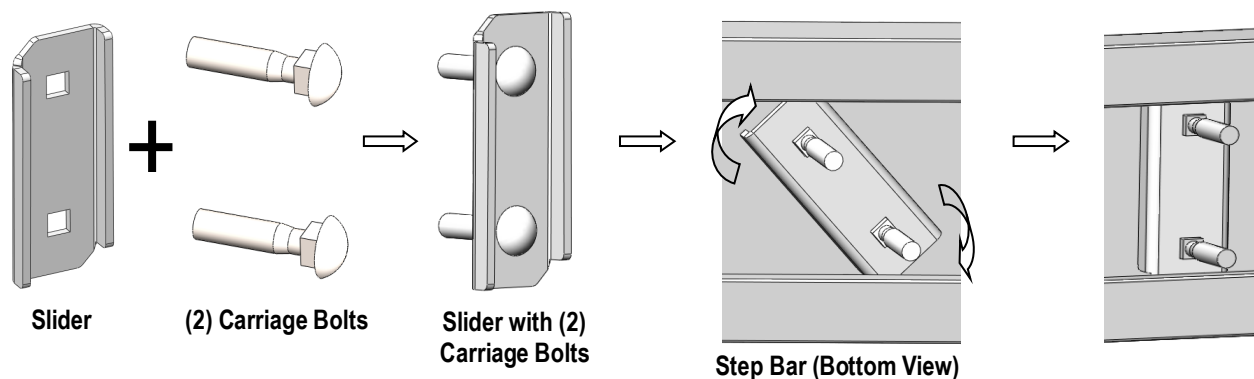
(Fig 3) Passenger Center & Rear Mounting Locations

STEP 3

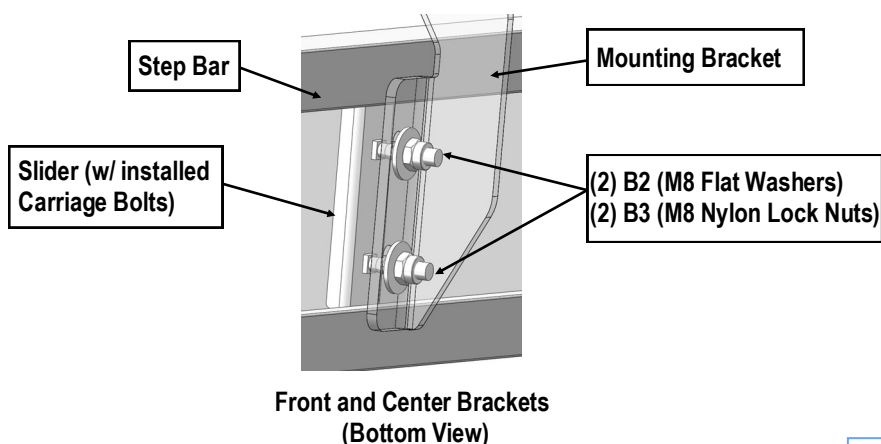
Once all (3) Passenger side mounting brackets are installed, then proceed to the Step Bar installation. (**Figs 4 & 5**)

- (1) Select (1) B4 (Slider) and (2) B1 (M8X1.25-35 Carriage Bolts);
- (2) Install (2) B1 (M8X1.25-35 Carriage Bolts) in (1) B4 (Slider).
- (3) Slide the Slider (with carriage bolts) to the **Step Bar**.
- (4) Repeat to install the other (2) B4 (sliders) to the step bar.
- (5) Attach the Step Bar (with the Sliders) onto the installed mounting brackets. Position the Sliders to the installed brackets. Secure the Step Bar to the installed Brackets by using (6) B2 (M8 Large Flat Washers) and (6) B3 (M8 Nylon Lock Nuts) and (3) B4 (Sliders), (**Fig 5**). Do not fully tighten hardware at this time.

Note: The Sliders are packed with the Mounting Brackets. Level and adjust the Step Bar and fully tighten all hardware. Repeat **Steps 1-3** for the other side Step Bar installation. **The installation is completed!!!**



(Fig 4) Slider Installation



(Fig 5) Step Bar Installation

Attention

Do periodic inspections to the installation to make sure that all hardware is secure and tight.
In order to protect your bars/boards, please use mild soap/non-abrasive products for cleaning only.