

iBoard®



Scan for
Installation Video

iBoard® by APS

PART#: IB-054C&H

READ INSTRUCTIONS CAREFULLY BEFORE STARTING INSTALLATION. REMOVE CONTENTS FROM BOX AND VERIFY ALL PARTS ARE PRESENT. ASSISTANCE IS RECOMMENDED.

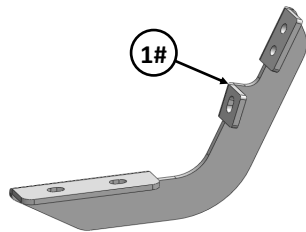
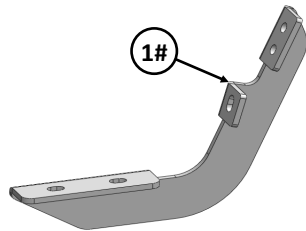
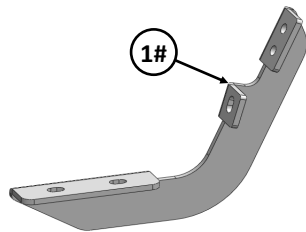
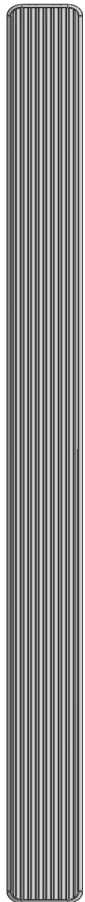
*ROCKER PANEL MOUNT

*DRILLING IS REQUIRED

Fastener Size	Tightening Torque (ft-lbs)	Required
6mm	6-7	√
8mm	16-18	√
10mm	31-32	X
12mm	56-58	X
14mm	92-94	X

PART LIST

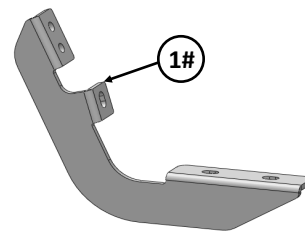
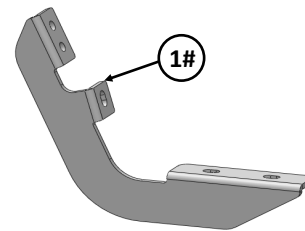
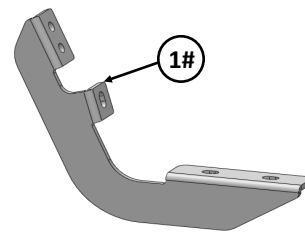
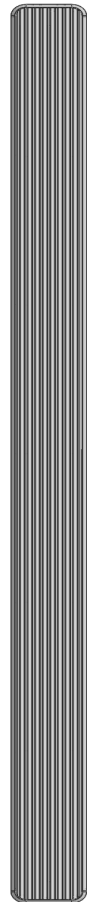
Driver Side Step Bar



Front



Passenger Side Step Bar



NOTE: All (6) Mounting Brackets are universal.

Customer Support: info@iboardauto.com



Mounting Bracket List					
Item	QTY	Description	Item	QTY	Description
1#	6	Mounting Brackets			

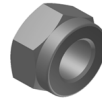
Hardware Package A (For Bracket Installation)					
Item	QTY	Description	Item	QTY	Description
1#	6	M8X1.25-20mm Hex Bolts	3#	6	M8 Nylon Lock Nuts
2#	12	M8 Flat Washers	4#	12	ST6.3-22mm Hex Flange Self Tapping Screws



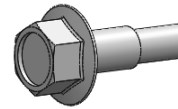
1 #



2 #

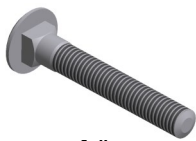


3 #



4 #

Hardware Package B (For Stainless Steel Step Bar Installation)					
Item	QTY	Description	Item	QTY	Description
1#	12	M8X1.25-35mm Carriage Bolts	3#	12	M8 Nylon Lock Nuts
2#	12	M8 Large Flat Washers	4#	6	Sliders (Packed with Step Bars)



1 #



2 #



3 #



4 #



STEP 1

Start from the Driver side of the vehicle. Drilling (4) 8mm holes in pinch weld as shown (Fig 1).

STEP 2

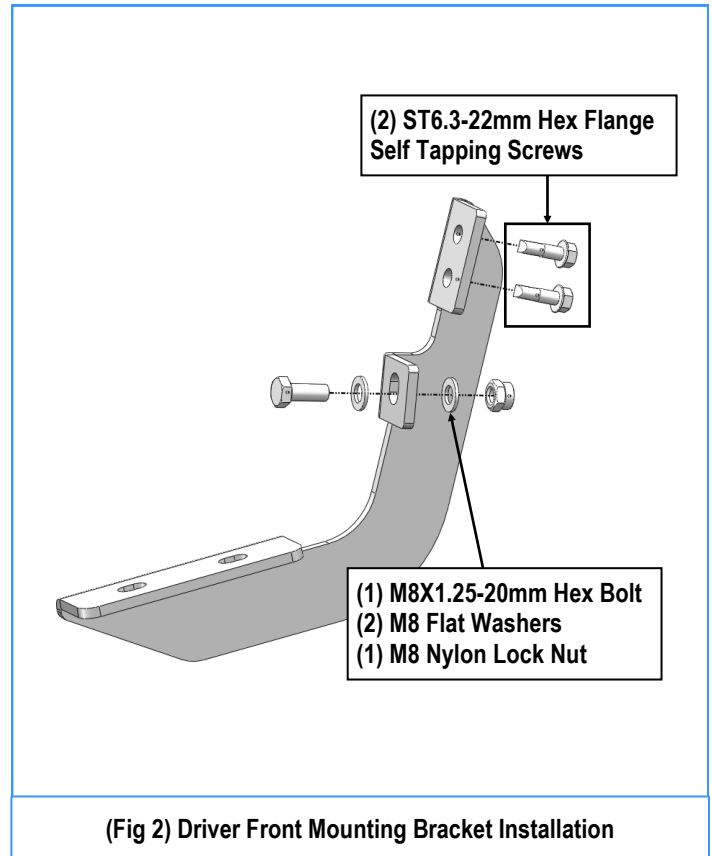
Select (1) Mounting Bracket, attach the Mounting Bracket to the drilled holes on driver side front mounting location with (2) ST6.3-22mm Hex Flange Self Tapping Screws, (1) M8X1.25-20mm Hex Bolt, (2) M8 Flat Washers and (1) M8 Nylon Lock Nut (Fig 2). Do not fully tighten at this time.

NOTE: *All (6) Mounting Brackets are universal.

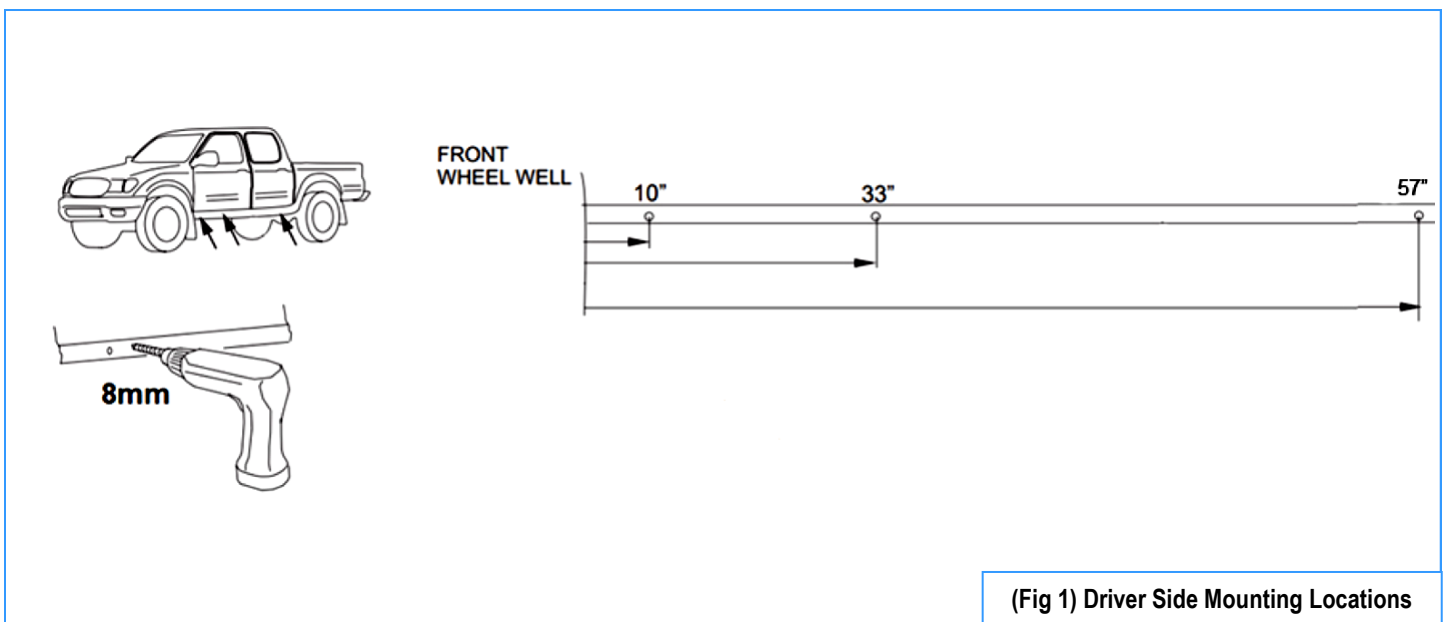
*Drill 3/16" holes on body panel for installing the ST6.3 screws, if no factory holes on the body panel.

STEP 3

Repeat **Steps 1-2** for the 2nd & 3rd Mounting Brackets installation. Do not fully tighten hardware at this time.



(Fig 2) Driver Front Mounting Bracket Installation



(Fig 1) Driver Side Mounting Locations



STEP 4

Once all (3) Driver side mounting brackets are installed, then proceed to the Step Bar installation. (Figs 3 & 4)

- (1) Select (1) Slider and (2) M8X1.25-35mm Carriage Bolts;
- (2) Install (2) M8X1.25-35mm Carriage Bolts in (1) Slider.
- (3) Slide the Slider (with carriage bolts) to the **Step Bar**.
- (4) Repeat to install the other (2) sliders to the step bar.
- (5) Attach the Step Bar (with the Sliders) onto the installed mounting brackets. Position the Sliders to the installed brackets. Secure the Step Bar to the installed Brackets by using (6) M8 Large Flat Washers and (6) M8 Nylon Lock Nuts and (3) Sliders, (Fig 4). Do not fully tighten hardware at this time.

Note: The Sliders are packed with the Step Bars.

Level and adjust the Step Bar and fully tighten all hardware.

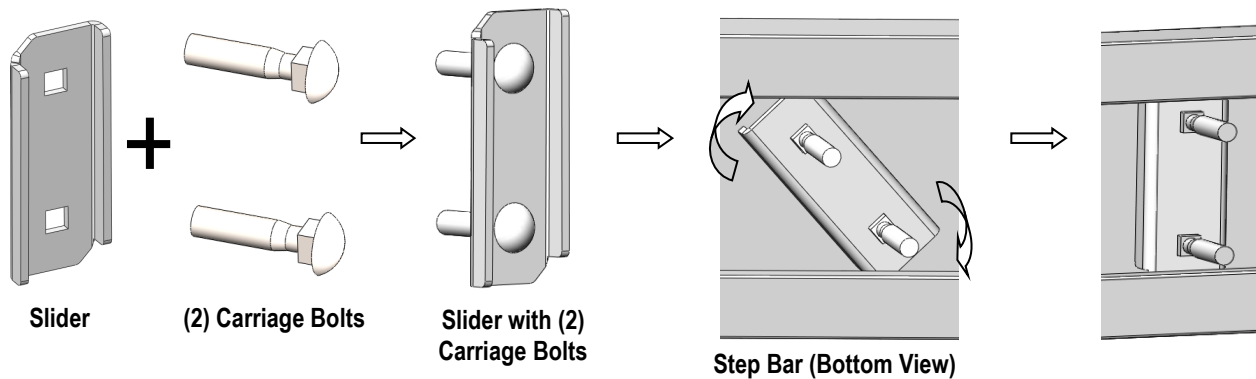
Repeat **Steps 1-4** for the other side Step Bar installation.

The installation is completed!!!

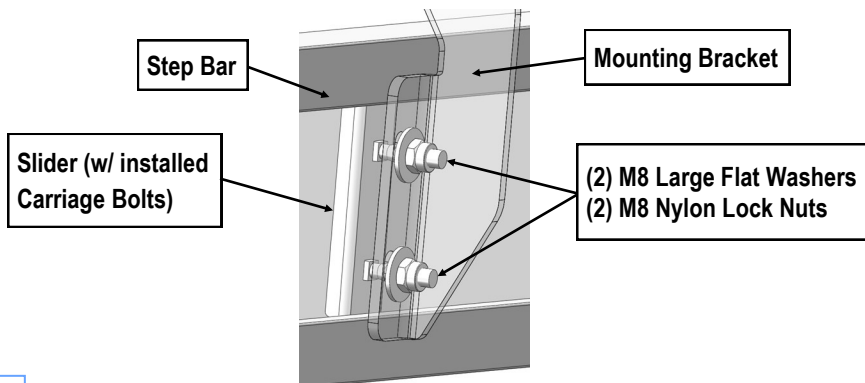
Attention

Do periodic inspections to the installation to make sure that all hardware is secure and tight.

In order to protect your bars/boards, please use mild soap/non-abrasive products for cleaning only.



(Fig 3) Slider Installation



(Fig 4) Step Bar Installation