

iBoard®

iBoard® by APS

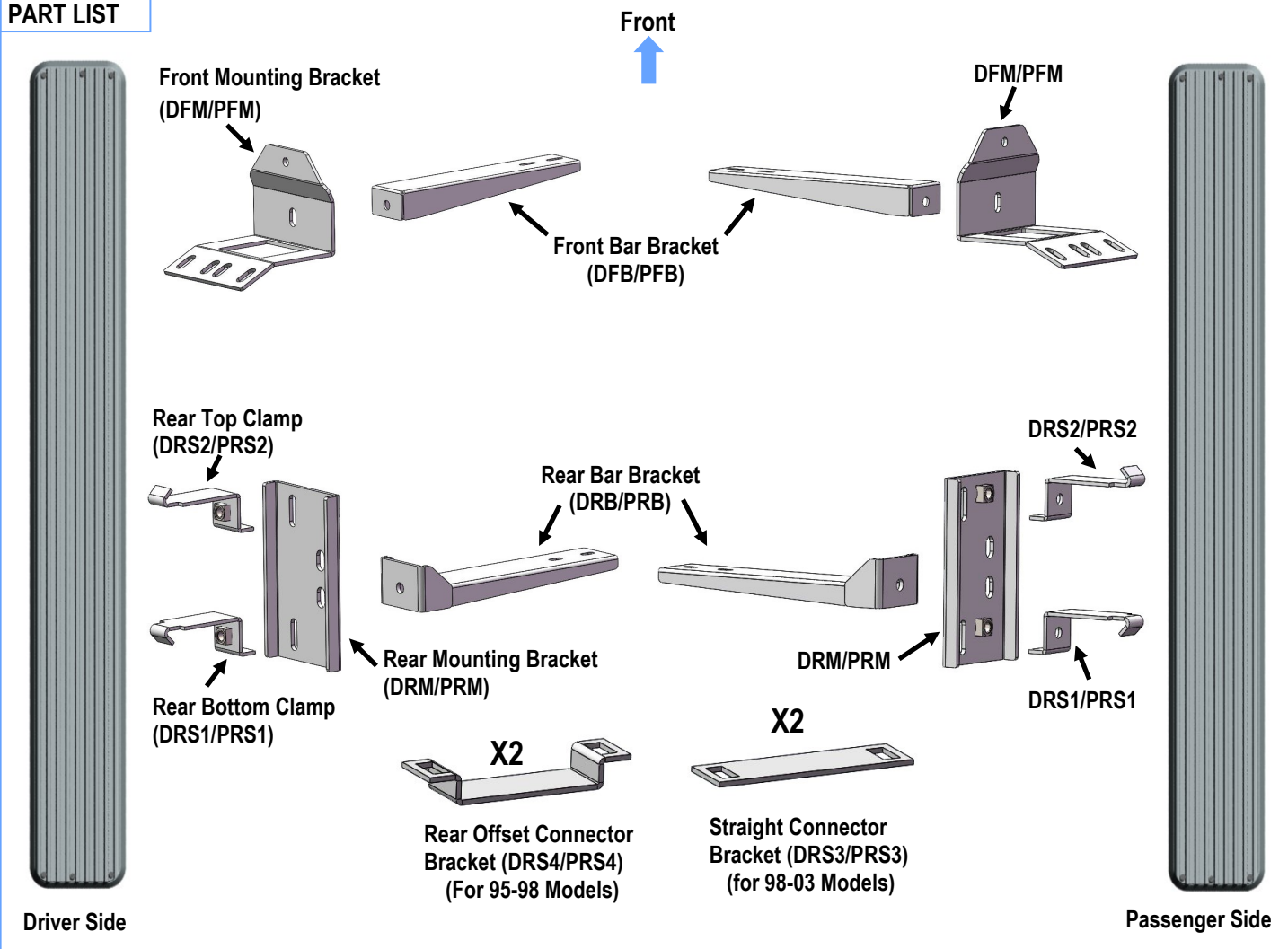
PART#: IB-054

READ INSTRUCTIONS CAREFULLY BEFORE STARTING INSTALLATION. REMOVE CONTENTS FROM BOX AND VERIFY ALL PARTS ARE PRESENT. ASSISTANCE IS RECOMMENDED.

*BODY FRAME MOUNT
*NO DRILLING REQUIRED

Fastener Size	Tightening Torque (ft-lbs)	Required
6mm	6-7	√
8mm	16-18	X
10mm	31-32	√
12mm	56-58	√
14mm	92-94	X

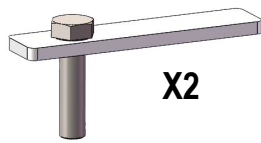
PART LIST



Customer Support: info@iboardauto.com

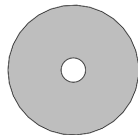
iBoard®

Hardware Package A (For Bracket Installation)



X2

M10X40 Bolt Plate



X2

M10 Plastic Washer



X6

M12X1.75-40mm
Hex Bolt



X12

M12 Flat Washer



X6

M12 Lock Washer



X6

M12 Hex Nut



X6

M10X1.5-45mm
Hex Bolt



X6

M10 Flat Washer



X6

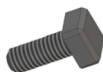
M10 Lock Washer



X2

M10 Hex Nut

Hardware Package B (For Aluminum Step Bar Installation Only, Not Supply to Stainless Steel Step Bar)



X8

M6X1-20mm Square Head Bolt



X8

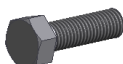
M6 Large Flat Washer



X8

M6 Nylon Lock Nut

Hardware Package C (For Stainless Steel Step Bar Installation Only, Not Supply to Aluminum Step Bar)



X8

M6X1-20mm Hex Bolt



X8

M6 Lock Washer



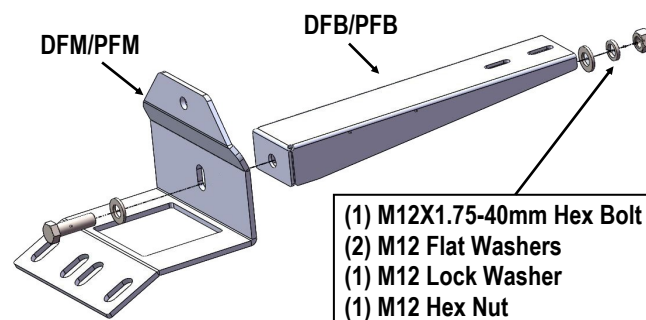
X8

M6 Flat Washer

STEP 1

Start installation from the passenger side front of the vehicle.

Select and assemble (1) Front Mounting Bracket (DFM/PFM) and (1) Front Bar Bracket (DFB/PFB) with (1) M12X1.75-40mm Hex Bolt, (2) M12 Flat Washers, (1) M12 Lock Washer and (1) M12 Hex Nut, (Fig 1). Do not fully tighten hardware at this time.



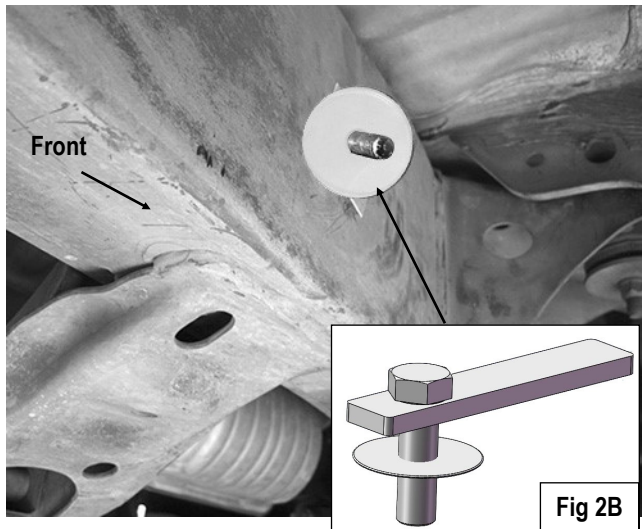
(Fig 1) Front Mounting Bracket Assembly

iBoard®

STEP 2

Locate the factory rectangular hole in the frame towards the front of the vehicle. Thread (1) M10 Plastic Washer part way onto (1) M10 Bolt Plate, (**Fig 2B**). Insert the M10 Bolt Plate into the rectangular hole on the side of the frame, (**Fig 2A**). Once inserted, thread the M10 Plastic Washer down tight against the frame.

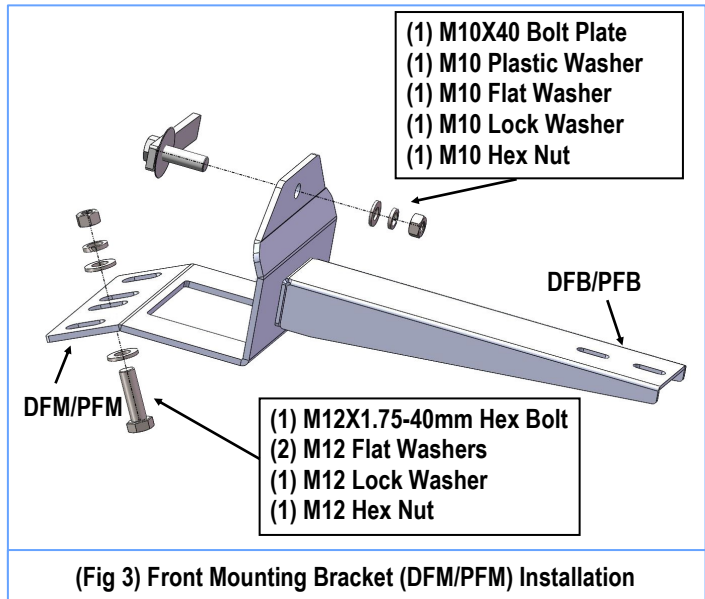
Note: The M10 Plastic Washer is designed to prevent the M10 Bolt Plate from falling into the frame channel and hold the bolt plate in place within mounting the Brackets.



(Fig 2A) M10 Bolt Plate Installation

STEP 3

Attach upper hole of the Front Mounting Bracket (**DFM/PFM**) to the installed M10 Bolt Plate with (1) M10 Lock Washer, (1) M10 Flat Washer and (1) M10 Hex Nut. Attach the bottom hole of the mounting bracket to the frame of vehicle with (1) M12X1.75-40mm Hex Bolt, (1) M12 Lock Washer, (2) M12 Flat Washers and (1) M12 Hex Nut (**Fig 3**). Do not fully tighten hardware at this time.



(Fig 3) Front Mounting Bracket (DFM/PFM) Installation

STEP 4

Move to passenger side rear mounting location. Assemble (1) Rear Bar Bracket (**DRB/PRB**) and Rear Mounting Bracket (**DRM/PRM**) with (1) M12X1.75-40mm Hex Bolt, (1) M12 Lock Washer, (2) M12 Flat Washer and (1) M12 Hex Nut (**Fig 4**). Do not fully tighten hardware at this time.

Place (1) Rear Top Clamp (**DRS2/PRS2**) on top of the frame channel and place (1) Rear Bottom Clamp (**DRS1/PRS1**) at the bottom of the frame channel. Bolt (2) Clamps to the Rear Mounting Bracket (**DRM/PRM**) with (2) M10X1.5-45mm Hex Bolts, (2) M10 Lock Washers and (2) M10 Flat Washers, (**Fig 4 & 5**). Do not fully tighten hardware at this time.

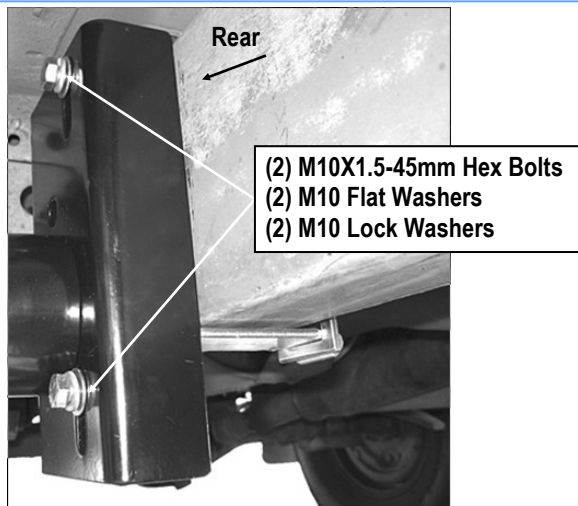
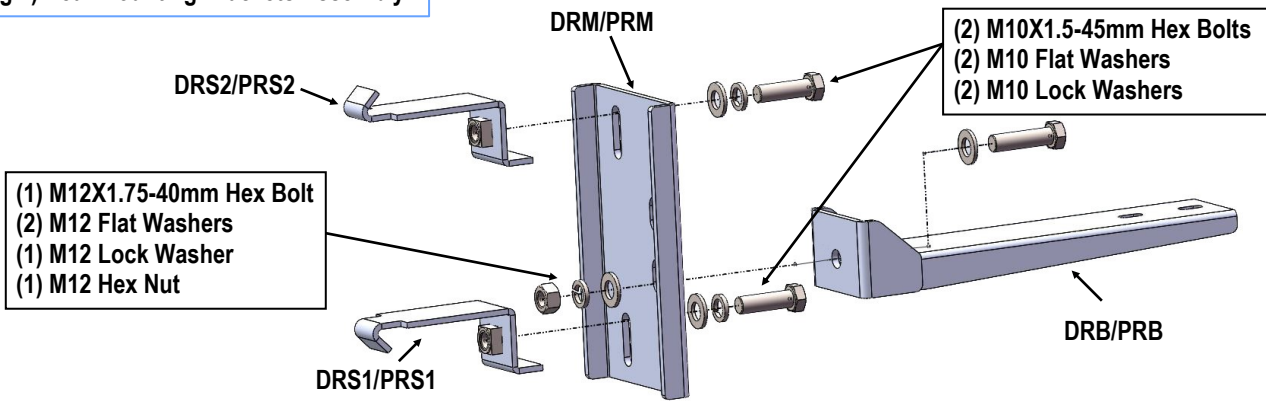
IMPORTANT: Hook on the Top Clamp should be facing up. Hook on the Rear Bottom Clamp should be facing downward.

STEP 5

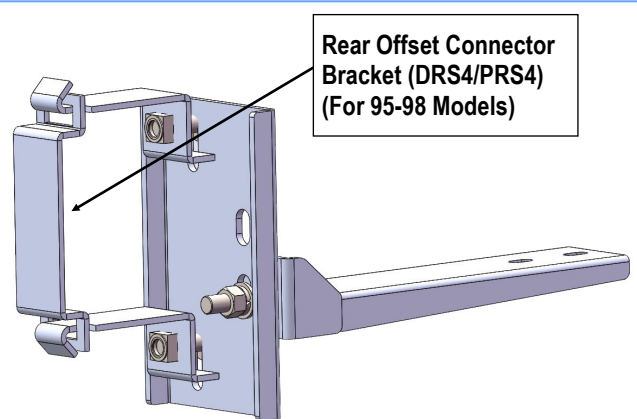
Depending on your vehicle, place either the Straight Connector Bracket (**DRS3/PRS3**) or the Rear Offset Connector Bracket (**DRS4/PRS4**) on the backside of the frame and hook it over the Rear Top Clamp and Rear Bottom Clamp. (**Fig 6 & 7**).

iBoard®

(Fig 4) Rear Mounting Brackets Assembly



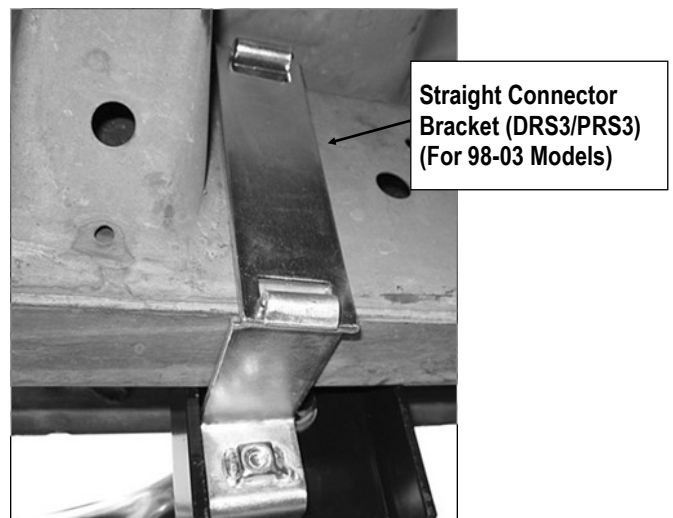
(Fig 5) Rear Mounting Bracket Assembly



(Fig 6) 95-98 Extended Cab Models

95-98 Extended Cab Models: Place Rear Offset Connector Bracket (**DRS4/PRS4**) against backside of frame on the passenger side and Straight Connector Bracket against the backside of frame on the driver side, (Fig 6)

98-03 Extended Cab Models: Place Straight Connector Bracket (**DRS3/PRS3**) against the backside of the frame on the passenger and driver side. (Fig 7)



(Fig 7) 98-03 Extended Cab Models

iBoard®

STEP 6

Once all (2) mounting brackets are installed, then proceed to the Step Bar installation. According to the style of Step Bar proceed to the correct installation STEPS.

Note: Aluminum Step Bar refer to STEP 7; Stainless Steel Step Bar skip to STEP 8.

STEP 7

Aluminum Step Bar Installation:

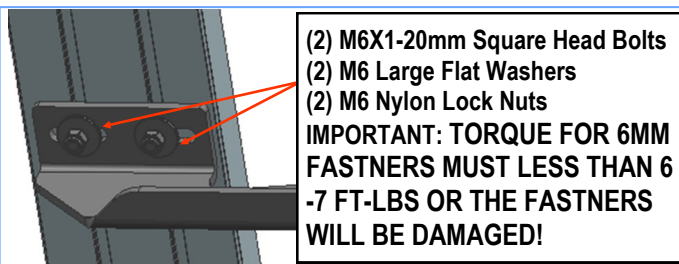
Select a **Aluminum Step Bar**. Slip (2) M6x1-20mm Square Head Bolts into each bottom channel (**Fig 8**). Carefully position the Step Bar onto the (2) Mounting Brackets.

IMPORTANT: Do not slide the Step Bar on the Brackets or the bottom surface of the board will be damaged. Attach the Step Bar to each Mounting Brackets with (2) M6x1-20mm Square Head Bolts, (2) M6 Large Flat Washers and (2) M6 Nylon Lock Nuts, (**Fig 9**). Do not fully tighten at this time.

Level and adjust the Step Bar and fully tighten all hardware. Repeat **Steps 1-7** for the other side Step Bar installation. **The installation is completed!!!**



(Fig 8) Slip M6X1-20mm Square Head Bolts Into The Bottom Channels



(Fig 9) Running Board Installed Onto Mounting Bracket

STEP 8

Stainless Steel Step Bar Installation:

Select a **Stainless Steel Step Bar** (with the U-Sliders installed on the Bar). Loose the U-Sliders, reposition the U-Sliders onto the board according to the (2) Installed Mounting Brackets location, (**Fig 10**). Re-secure the U-Sliders on the Step Bar. Attach the Step Bar to the installed Mounting Brackets with (4) M6X1-20mm Hex Bolts, (4) M6 Large Flat Washers & (4) M6 Lock Washers, (**Fig 11**). Do not fully tighten hardware at this time. Level and adjust the Step Bar and fully tighten all hardware. Repeat **Steps 1-6 and 8** for the other side Step Bar installation. **The installation is completed!!!**



(Fig 10) Slide & line up the U-Slider with the installed mounting brackets along bottom channel

(2) M6X1-20mm Hex Bolts
(2) M6 Large Flat Washers
(2) M6 Lock Washers
IMPORTANT: TORQUE FOR 6MM FASTNERS MUST LESS THAN 6-7 FT-LBS OR THE FASTNERS WILL BE DAMAGED!



(Fig 11) Step Bar Installed On Bracket Installed

Attention

Do periodic inspections to the installation to make sure that all hardware is secure and tight.

In order to protect your bars/boards, please use only mild soap/non-abrasive products for cleaning.