

iBoard®

iBoard® by APS

PART#: IB-012

READ INSTRUCTIONS CAREFULLY BEFORE STARTING INSTALLATION. REMOVE CONTENTS FROM BOX AND VERIFY ALL PARTS ARE PRESENT. ASSISTANCE IS RECOMMENDED.

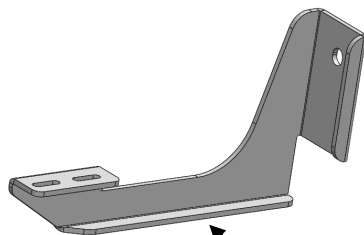
*ROCKER PANEL MOUNT
*DRILLING IS REQUIRED

Fastener Size	Tightening Torque (ft-lbs)	Required
6mm	6-7	√
8mm	16-18	X
10mm	31-32	√
12mm	56-58	√
14mm	92-94	X

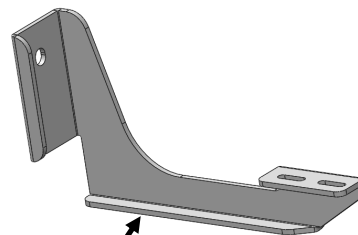
PART LIST



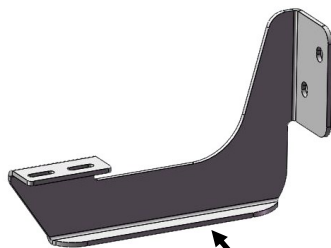
Front
↑



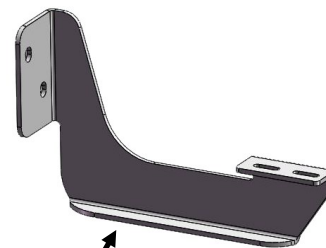
Driver Front Mounting Bracket (DFM)



Passenger Front Mounting Bracket (PFM)



Driver Rear Mounting Bracket (DRM)



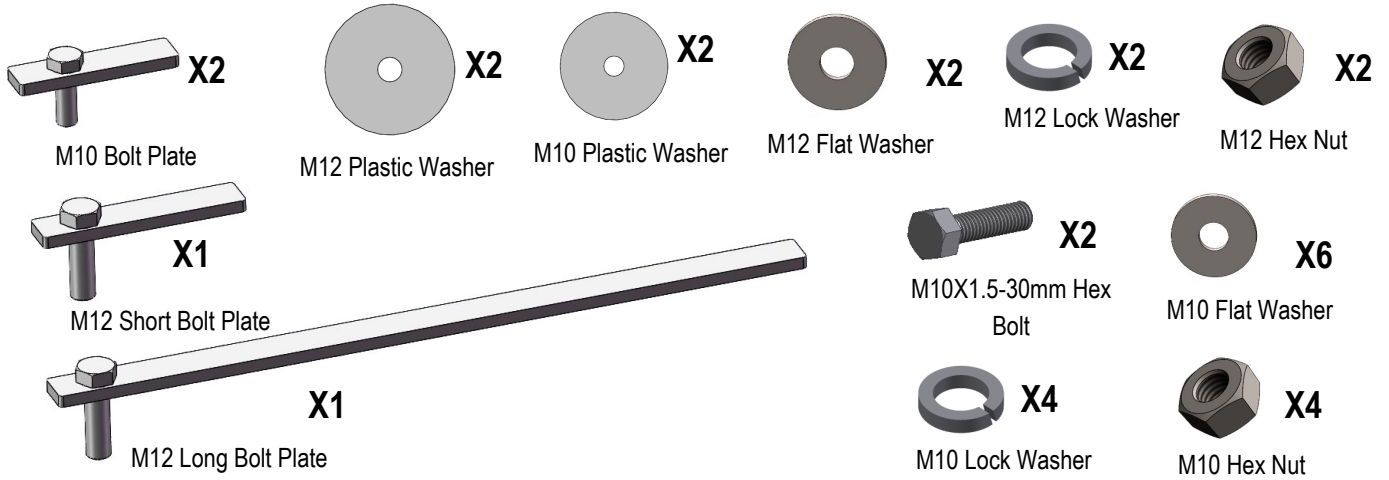
Passenger Rear Mounting Bracket (PRM)



Customer Support: info@iboardauto.com

iBoard®

Hardware Package A (For Bracket Installation)



Hardware Package B (For Aluminum Step Bar Installation Only, Not Supply to Stainless Steel Step Bar)

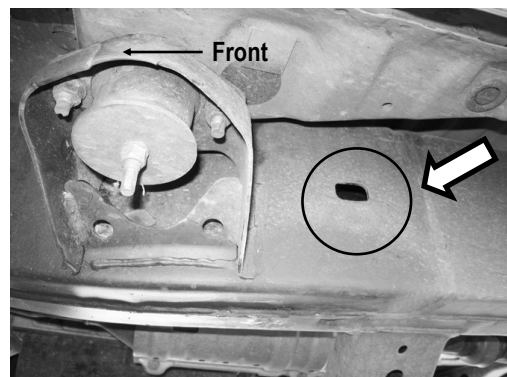


Hardware Package C (For Stainless Steel Step Bar Installation Only, Not Supply to Aluminum Step Bar)



STEP 1

Starting on the driver side of the vehicle, Locate the rectangular factory hole on the side of the frame behind the front body mount, (Fig 1).



(Fig 1) Driver Side Front Mounting Location

iBoard®

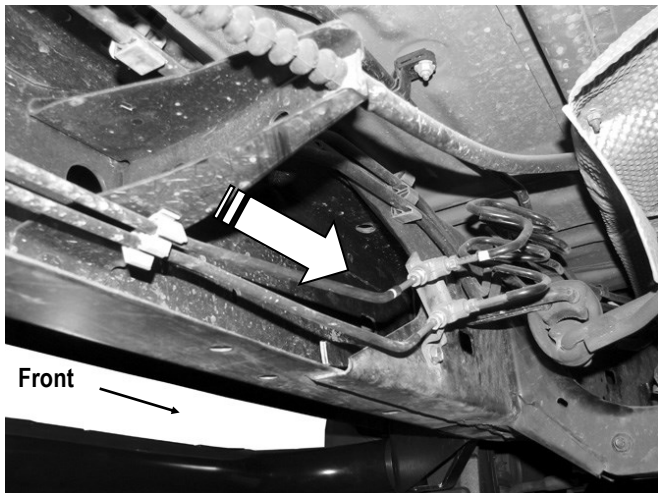
STEP 2

Select (1) M12 Long Bolt Plate. Thread (1) M12 Plastic Washer onto the M12 Bolt Plate.

NOTE: Use the **M12 Long Bolt Plate** for **driver** side installation and the **M12 Short Bolt Plate** for **passenger** side front bracket installation.

From the back of the frame, insert the M12 Bolt Plate into the open end of the boxed frame, **(Fig 2)**, and up to and out of the rectangular opening in the outside of the frame, **(Fig 3)**. Line up the top hole in the Driver Front Mounting Bracket **(DFM)** with the M12 Bolt Plate. Attach the Bracket to the installed M12 Bolt Plate with (1) M12 Flat Washer, (1) M12 Lock Washer and (1) M12 Hex Nut **(Fig 4)**. Do not fully tighten hardware at this time.

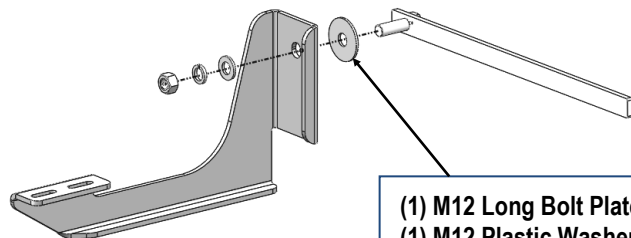
IMPORTANT: Plastic Washer is designed to prevent the Bolt Plate from falling into the body cavity and hold the Bracket in place within installation.



**(Fig 2) M12 Long Bolt Plate Install Location
(On Driver Side Front Mounting Location)**



**(Fig 3) M12 Long Bolt Plate Installed Inside View
(In Frame Channel on Driver Side Front Mounting Location)**



- (1) M12 Long Bolt Plate
- (1) M12 Plastic Washer
- (1) M12 Flat Washer
- (1) M12 Lock Washer
- (1) M12 Hex Nut

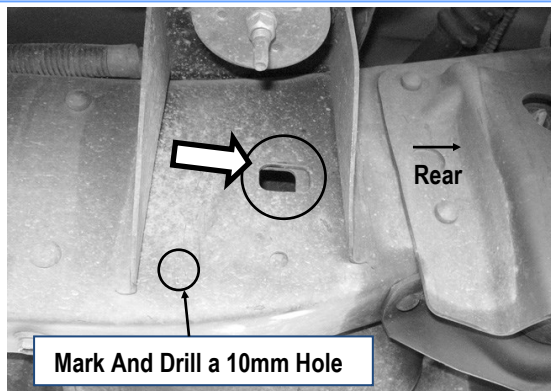
(Fig 4) Driver Front Mounting Bracket (DFM) Installation

STEP 3

Move to driver side rear mounting location, **(Fig 5 & 6)**. Thread (1) M10 Plastic Washer onto a M10 Bolt Plate. From the back of the frame channel, insert the M10 Bolt Plate through the factory hole. Select the Driver Rear Mounting Bracket **(DRM)**, attach the upper hole on the Bracket to the installed M10 Bolt Plate with (1) M10 Flat Washer, (1) M10 Lock Washer and (1) M10 Hex Nut, **(Fig 7)**. Do not fully tighten hardware at this time.

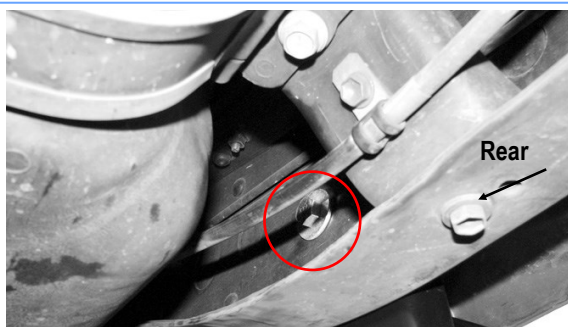
iBoard®

Mark the location of the lower hole on the rear bracket. Remove the installed Driver Rear Mounting Bracket (DRM), drill a 10mm hole on the frame, (Fig 5). Attach the bracket to 10mm hole with (1) M10X1.5-30mm Hex Bolt, (2) M10 Flat Washers, (1) M10 Lock Washer and (1) M10 Hex Nut, (Fig 7). Reinstall the Driver Rear Mounting Bracket as Step 3a. Do not fully tighten hardware at this time.



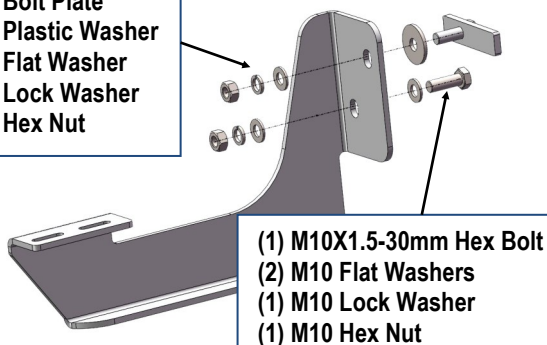
Mark And Drill a 10mm Hole

(Fig 5) Driver Side Rear Mounting Location



(Fig 6) Driver Rear Mounting Bracket Installed
(Back View Of Driver Side-Rear Frame Channel, Reference Only)

- (1) M10 Bolt Plate
- (1) M10 Plastic Washer
- (1) M10 Flat Washer
- (1) M10 Lock Washer
- (1) M10 Hex Nut



(Fig 7) Driver Rear Mounting Bracket (DRM) Installation

STEP 4

Once all (2) mounting brackets are installed, then proceed to the Step Bar installation. According to the style of Step Bar proceed to the correct installation STEPS.

Note: Aluminum Step Bar refer to STEP 5; Stainless Steel Step Bar skip to STEP 6.

STEP 5

Aluminum Step Bar Installation:

Select a **Aluminum Step Bar**. Slip (2) M6x1-20mm Square Head Bolts into each bottom channel (Fig 8). Carefully position the Step Bar onto the (2) Mounting Brackets.

IMPORTANT: Do not slide the Step Bar on the Brackets or the bottom surface of the board will be damaged. Attach the Step Bar to each Mounting Brackets with (2) M6x1-20mm Square Head Bolts, (2) M6 Large Flat Washers and (2) M6 Nylon Lock Nuts, (Fig 9). Do not fully tighten at this time.

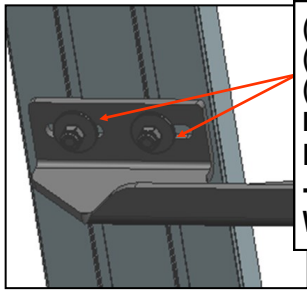
Level and adjust the Step Bar and fully tighten all hardware.

Repeat **Steps 1-5** for the other side Step Bar installation. **The installation is completed!!!**



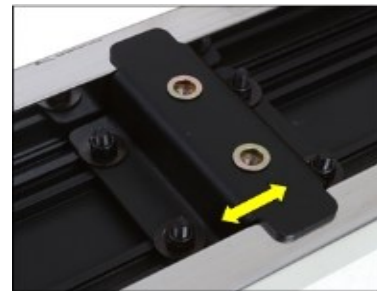
(Fig 8) Slip M6X1-20mm Square Head Bolts Into The Bottom Channels

iBoard®



(2) M6X1-20mm Square Head Bolts
(2) M6 Large Flat Washers
(2) M6 Nylon Lock Nuts
IMPORTANT: TORQUE FOR 6MM FASTNERS MUST LESS THAN 6-7 FT-LBS OR THE FASTNERS WILL BE DAMAGED!

(Fig 9) Running Board Installed Onto Mounting Bracket



(Fig 10) Slide & line up the U-Slider with the installed mounting brackets along bottom channel

STEP 6

Stainless Steel Step Bar Installation:

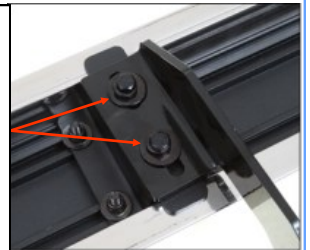
Select a **Stainless Steel Step Bar** (with the U-Sliders installed on the Bar). Loose the U-Sliders, reposition the U-Sliders onto the board according to the (2) Installed Mounting Brackets location, **(Fig 10)**. Re-secure the U-Sliders on the Step Bar. Attach the Step Bar to the installed Mounting Brackets with (4) M6X1-20mm Hex Bolts, (4) M6 Large Flat Washers & (4) M6 Lock Washers, **(Fig 11)**. Do not fully tighten hardware at this time.

Level and adjust the Step Bar and fully tighten all hardware.

Repeat **Steps 1-4 and 6** for the other side Step Bar installation.

The installation is completed!!!

(2) M6X1-20mm Hex Bolts
(2) M6 Large Flat Washers
(2) M6 Lock Washers
IMPORTANT: TORQUE FOR 6MM FASTNERS MUST LESS THAN 6-7 FT-LBS OR THE FASTNERS WILL BE DAMAGED!



(Fig 11) Step Bar Installed on Bracket Installed (Example)

Attention

Do periodic inspections to the installation to make sure that all hardware is secure and tight.

In order to protect your bars/boards, please use only mild soap/non-abrasive products for cleaning.