

iBoard®

iBoard® by APS

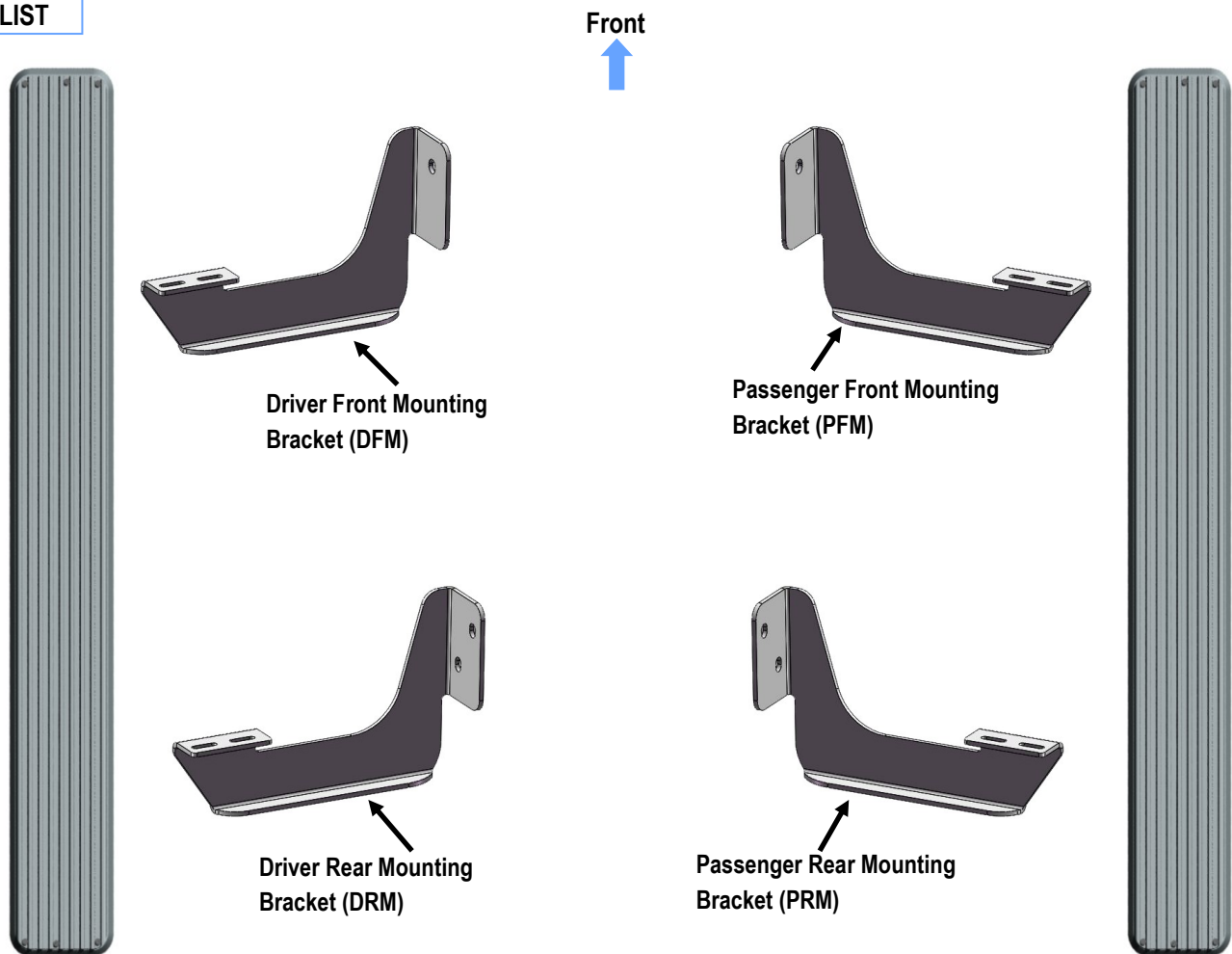
PART#: IB-012A-B

READ INSTRUCTIONS CAREFULLY BEFORE STARTING INSTALLATION. REMOVE CONTENTS FROM BOX AND VERIFY ALL PARTS ARE PRESENT. ASSISTANCE IS RECOMMENDED.

*ROCKER PANEL MOUNT
*DRILLING IS REQUIRED

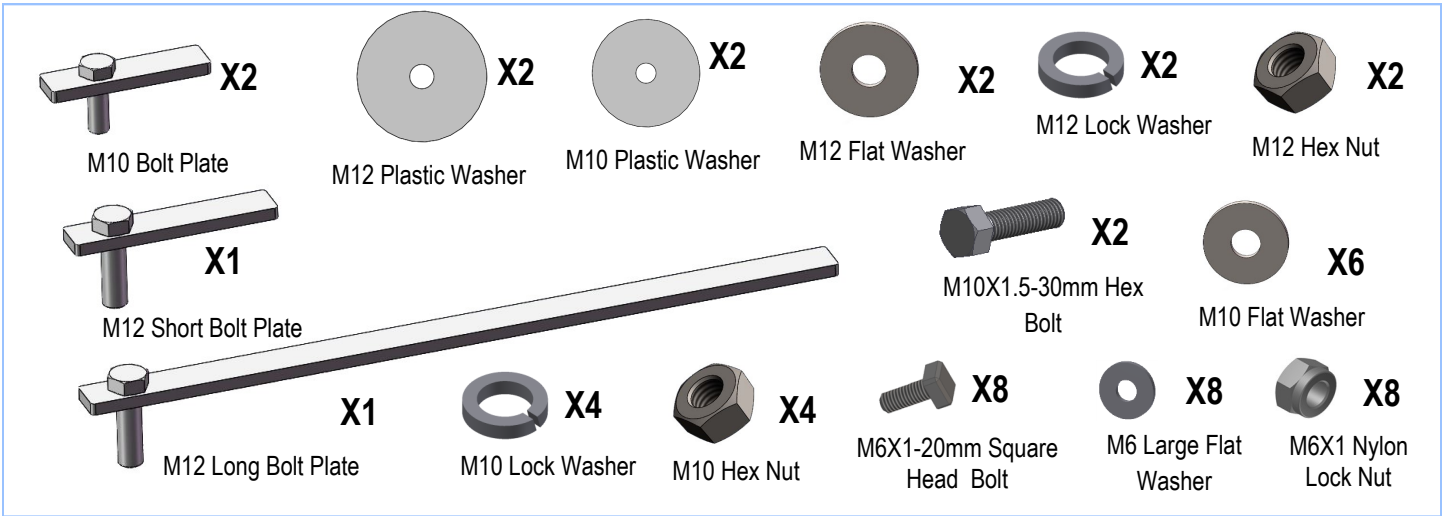
Fastener Size	Tightening Torque (ft-lbs)
6mm	6-7
8mm	16-18
10mm	31-32
12mm	56-58
14mm	92-94

PART LIST



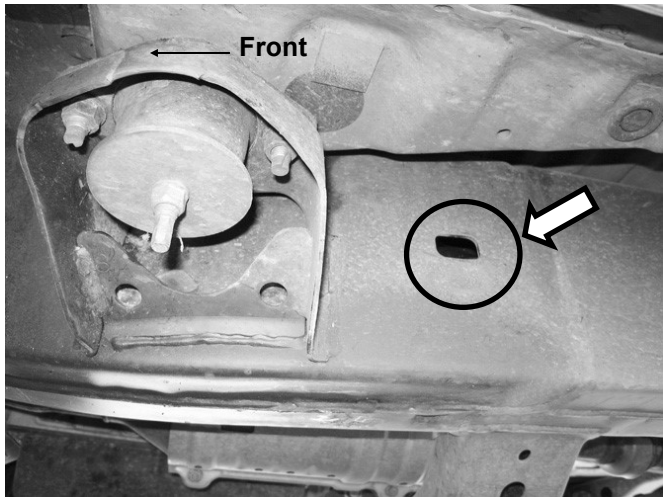
Customer Support: info@iboardauto.com

iBoard®



STEP 1

Starting on the driver side of the vehicle, Locate the rectangular factory hole on the side of the frame behind the front body mount, (Fig 1).



(Fig 1) Driver Side Front Mounting Location

STEP 2

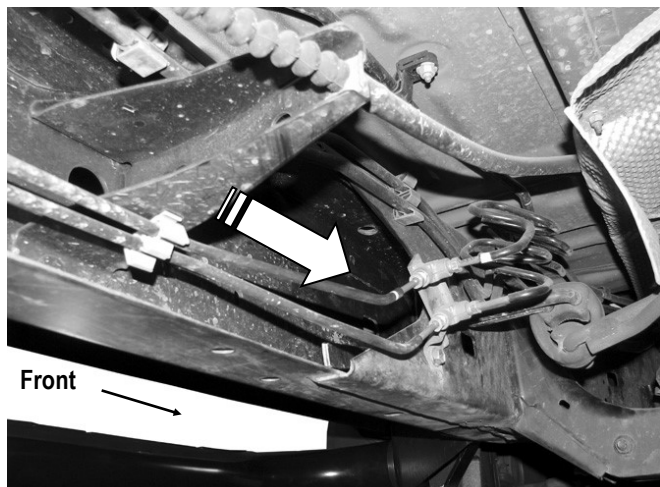
Select (1) M12 Long Bolt Plate. Thread (1) M12 Plastic Washer onto the M12 Bolt Plate.

NOTE: Use the **M12 Long Bolt Plate** for **driver** side installation and the **M12 Short Bolt Plate** for **passenger** side front bracket installation.

From the back of the frame, insert the M12 Bolt Plate into the open end of the boxed frame, (Fig 2), and up to and out of the rectangular opening in the outside of the frame, (Fig 3). Line up the top hole in the Driver Front Mounting Bracket (DFM) with the M12 Bolt Plate. Attach the Bracket to the installed M12 Bolt Plate with (1) M12 Flat Washer, (1) M12 Lock Washer and (1) M12 Hex Nut (Fig 4). Do not fully tighten hardware at this time.

IMPORTANT: Plastic Washer is designed to prevent the Bolt Plate from falling into the body cavity and hold the Bracket in place within installation.

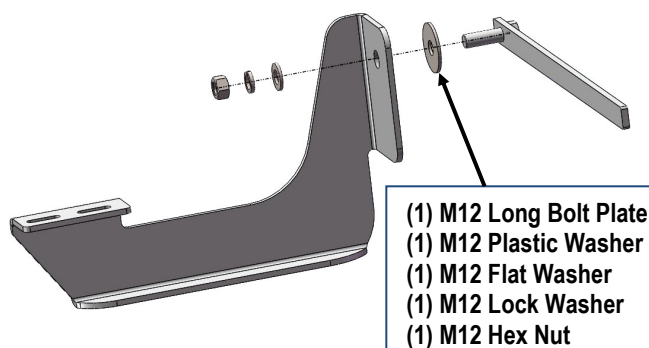
iBoard®



(Fig 2) M12 Long Bolt Plate Install Location
(On Driver Side Front Mounting Location)



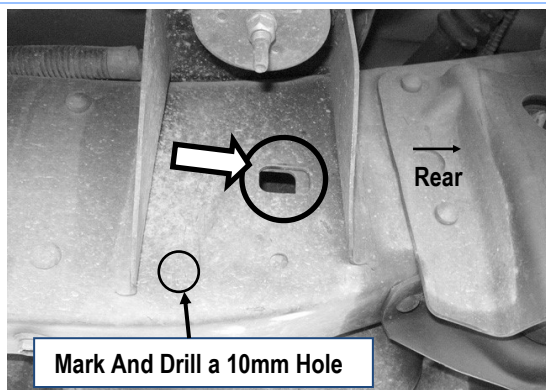
(Fig 3) M12 Long Bolt Plate Installed Inside View
(In Frame Channel on Driver Side Front Mounting Location)



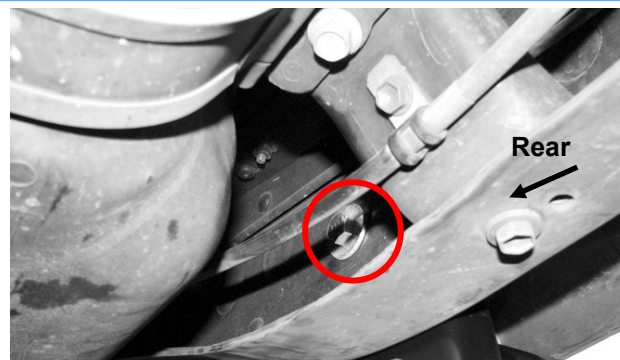
(Fig 4) Driver Front Mounting Bracket (DFM) Installation

STEP 3

- Move to driver side rear mounting location, (Fig 5 & 6). Thread (1) M10 Plastic Washer onto a M10 Bolt Plate. From the back of the frame channel, insert the M10 Bolt Plate through the factory hole. Select the Driver Rear Mounting Bracket (DRM), attach the upper hole on the Bracket to the installed M10 Bolt Plate with (1) M10 Flat Washer, (1) M10 Lock Washer and (1) M10 Hex Nut, (Fig 7). Do not fully tighten hardware at this time.
- Mark the location of the lower hole on the rear bracket. Remove the installed Driver Rear Mounting Bracket (DRM), drill a 10mm hole on the frame, (Fig 5). Attach the bracket to 10mm hole with (1) M10X1.5-30mm Hex Bolt, (2) M10 Flat Washers, (1) M10 Lock Washer and (1) M10 Hex Nut, (Fig 7). Reinstall the Driver Rear Mounting Bracket as Step 3a. Do not fully tighten hardware at this time.



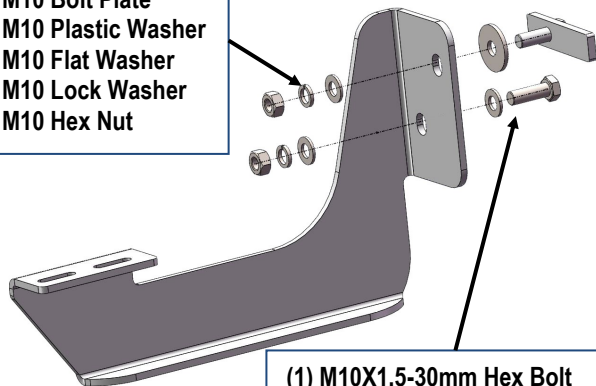
(Fig 5) Driver Side Rear Mounting Location



(Fig 6) Driver Rear Mounting Bracket Installed
(Back View Of Driver Side-Rear Frame Channel, Reference Only)

iBoard®

- (1) M10 Bolt Plate
- (1) M10 Plastic Washer
- (1) M10 Flat Washer
- (1) M10 Lock Washer
- (1) M10 Hex Nut



- (1) M10X1.5-30mm Hex Bolt
- (2) M10 Flat Washers
- (1) M10 Lock Washer
- (1) M10 Hex Nut

(Fig 7) Driver Rear Mounting Bracket (DRM) Installation

STEP 4

Select a Running Board. Slip (2) M6x1-20mm Square Head Bolts into each bottom channel (Fig 8). Carefully position the Running Board onto the (2) Mounting Brackets.

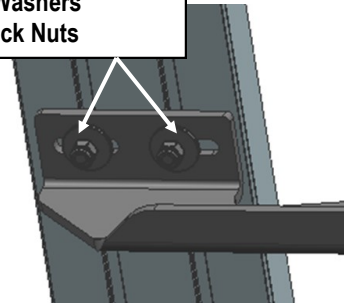
IMPORTANT: Do not slide the Running Board on the Brackets or the bottom surface of the board will be damaged. Attach the Running Board to Mounting Bracket with (4) M6x1-20mm Square Head Bolts, (4) M6 Large Flat Washers and (4) M6 X1 Nylon Lock Nuts (Fig 9). Do not fully tighten hardware at this time.

Level and adjust the Running Board and fully tighten all hardware.



(Fig 8) Slip M6X1-20mm Square Head Bolts Into The Bottom Channels

- (2) M6X1-20mm Square Head Bolts
- (2) M6 Large Flat Washers
- (2) M6X1 Nylon Lock Nuts



(Fig 9) Running Board Installed Onto Driver Center Mounting Bracket

STEP 5

Repeat **Steps 1-4** for the other side Running Board installation. The installation is completed (Fig 10).



(Fig 10) Installation Completed

Attention

Do periodic inspections to the installation to make sure that all hardware is secure and tight.

In order to protect your bars/boards, please use only mild soap/non-abrasive products for cleaning.