

iBoard®

iBoard® by APS

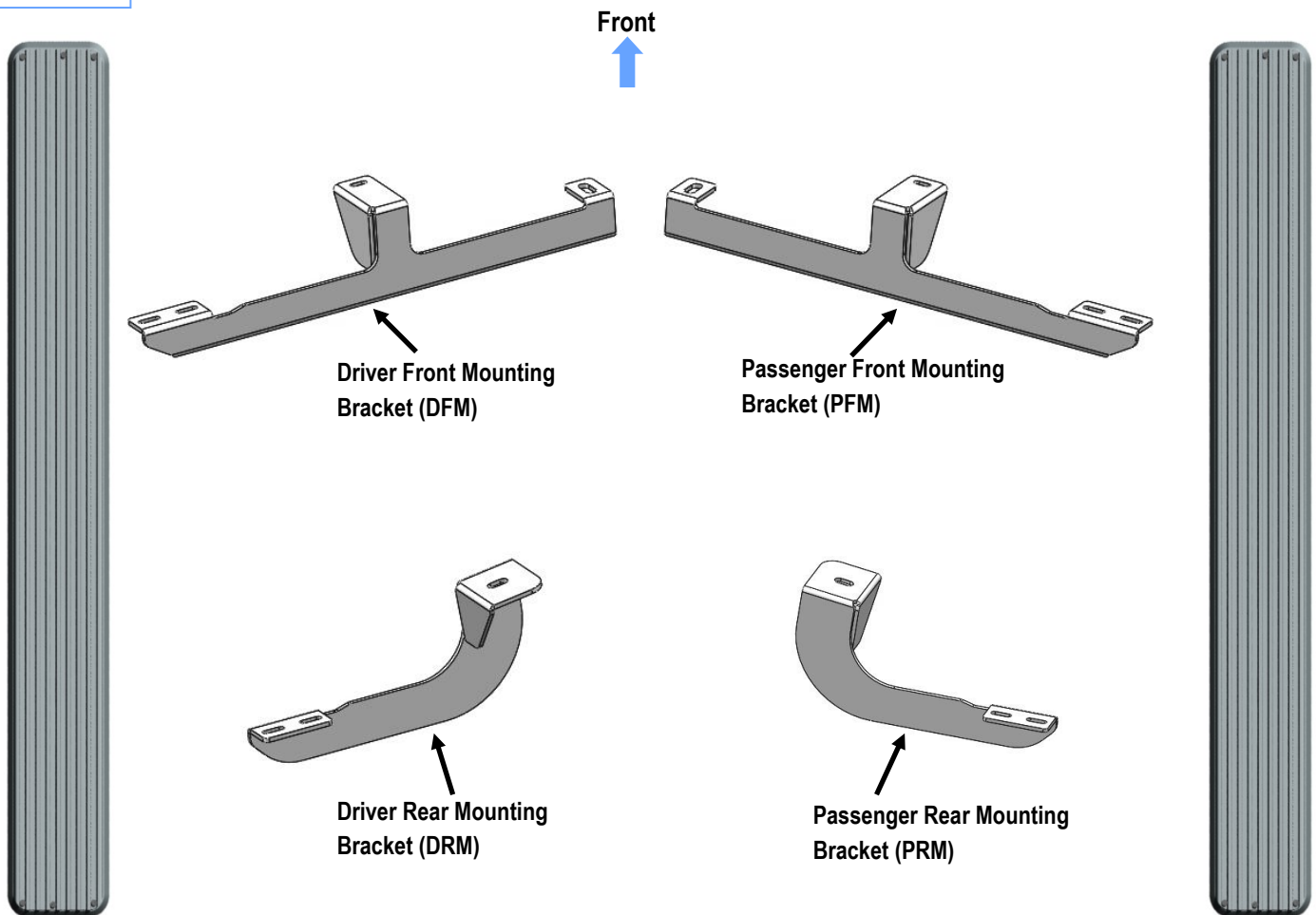
PART#: IB-229

READ INSTRUCTIONS CAREFULLY BEFORE STARTING INSTALLATION. REMOVE CONTENTS FROM BOX AND VERIFY ALL PARTS ARE PRESENT. ASSISTANCE IS RECOMMENDED.

*ROCKER PANEL MOUNT
*NO DRILLING REQUIRED / CUTTING IS REQUIRED

Fastener Size	Tightening Torque (ft-lbs)	Required
6mm	6-7	√
8mm	16-18	X
10mm	31-32	√
12mm	56-58	X
14mm	92-94	X

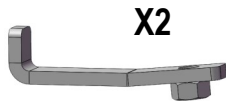
PART LIST



Customer Support: info@iboardauto.com

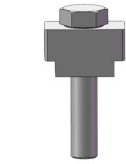
iBoard®

Hardware Package A (For Bracket Installation)



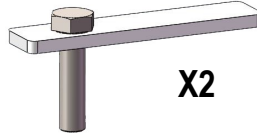
X2

M6 Nut Plate



X2

M10 T Block Bolt



X2

M10 Bolt Plate



X2

M10 Large Flat Washer



X2

M10 Flat Washer



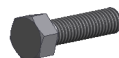
X4

M10 Lock Washer



X4

M10 Hex Nut



X2

M6X1-30mm Hex Bolt



X2

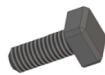
M6 Large Flat Washer



X2

M6 Lock Washer

Hardware Package B (For Aluminum Step Bar Installation Only, Not Supply to Stainless Steel Step Bar)



X8

M6X1-20mm Square Head Bolt



X8

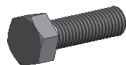
M6 Large Flat Washer



X8

M6 Nylon Lock Nut

Hardware Package C (For Stainless Steel Step Bar Installation Only, Not Supply to Aluminum Step Bar)



X8

M6X1-20mm Hex Bolt



X8

M6 Lock Washer

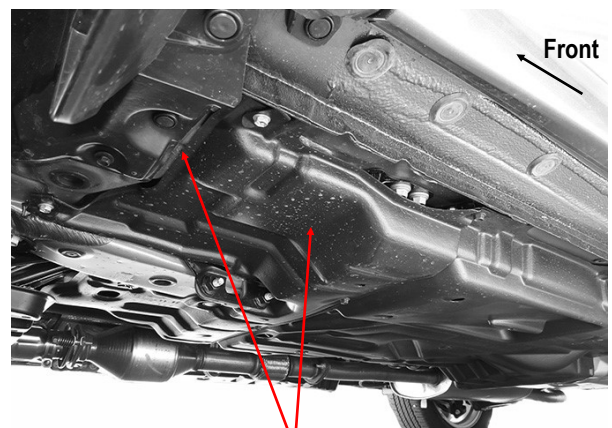


X8

M6 Flat Washer

STEP 1

Start installation from the driver side of the vehicle. Remove the front and middle section of the plastic splash guard, (Fig 1). Place the splash guard on a clean, stable work surface.

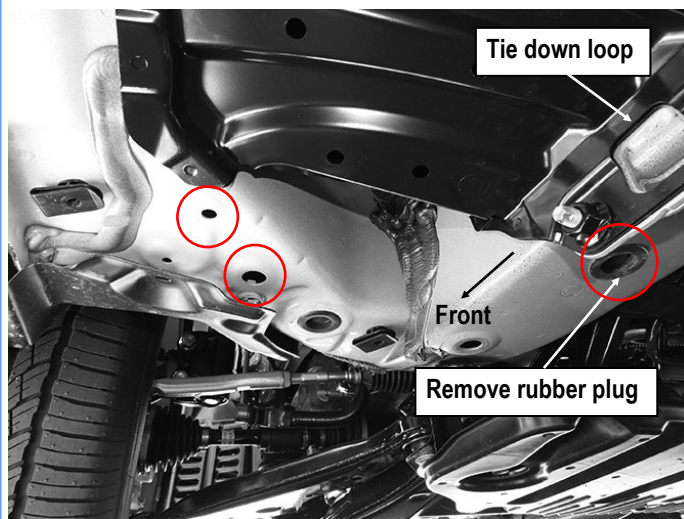


(Fig 1) Temporarily Remove The Driver Side Front And Middle Plastic Covers

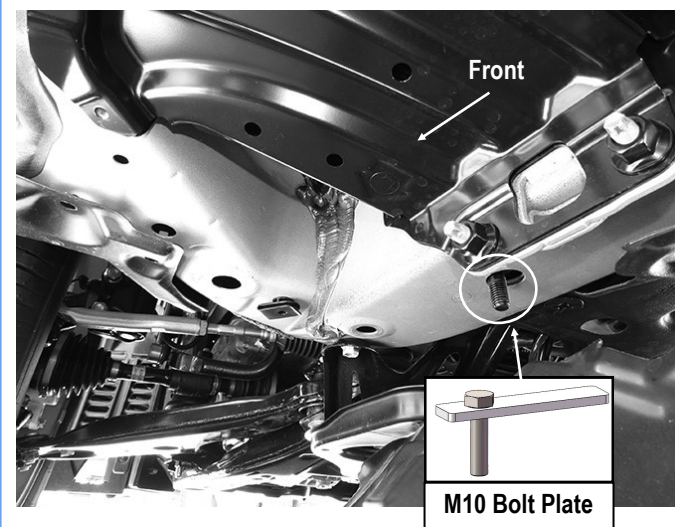
iBoard®

STEP 2

Move to the driver side front mounting location (**Fig 2**). Remove the rubber plug from the hole closest to the tie down loop. Insert (1) M10 Bolt Plate into the factory hole, (**Fig 3**).



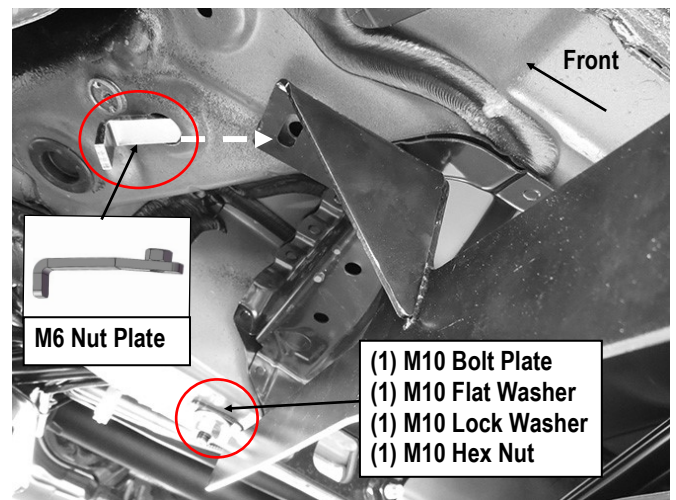
(Fig 2) Driver Side Mounting Location



(Fig 3) M10 Bolt Plate Installed

STEP 3

Next, select the Driver Front Mounting Bracket (**DFM**). Attach the Bracket to the installed M10 Bolt Plate with (1) M10 Flat Washer, (1) M10 Lock Washer and (1) M10 Hex Nut, (**Fig 4**). Do not fully tighten hardware at this time.



(Fig 4) Driver Front Mounting Bracket Installation

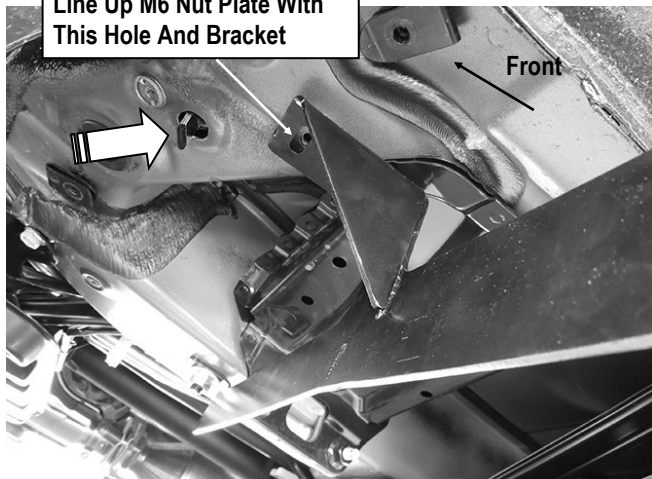
STEP 4

Line up the mounting tab on the Bracket with the factory hole on the cross member joins the frame rail, (**Figs 2 & 4**). Insert (1) M6 Nut Plate into the larger inner hole and line up the welded nut on M6 Nut Plate with the hole toward the outside under the mounting tab on the Bracket, (**Figs 4 & 5**).

Attach the Driver Front Mounting Bracket (**DFM**) to the M6 Nut Plate with (1) M6X1-30mm Hex Bolt, (1) M6 Lock Washer and (1) M6 Large Flat Washer, (**Fig 6**). Do not fully tighten hardware at this time.

iBoard®

Line Up M6 Nut Plate With This Hole And Bracket

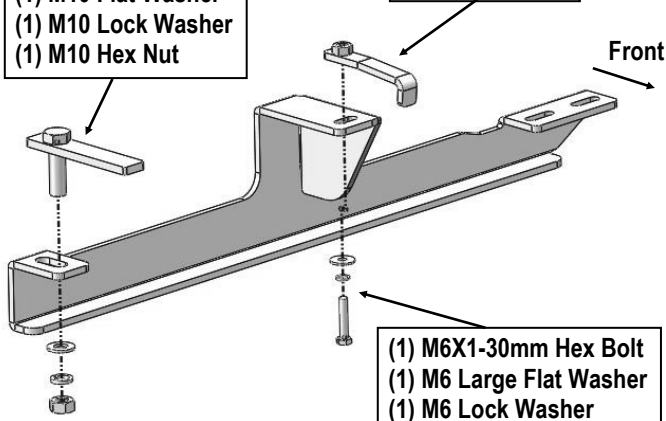


(Fig 5) Insert Nut Plate Into Factory Hole

- (1) M10 Bolt Plate
- (1) M10 Flat Washer
- (1) M10 Lock Washer
- (1) M10 Hex Nut

(1) M6 Nut Plate

Front



- (1) M6X1-30mm Hex Bolt
- (1) M6 Large Flat Washer
- (1) M6 Lock Washer

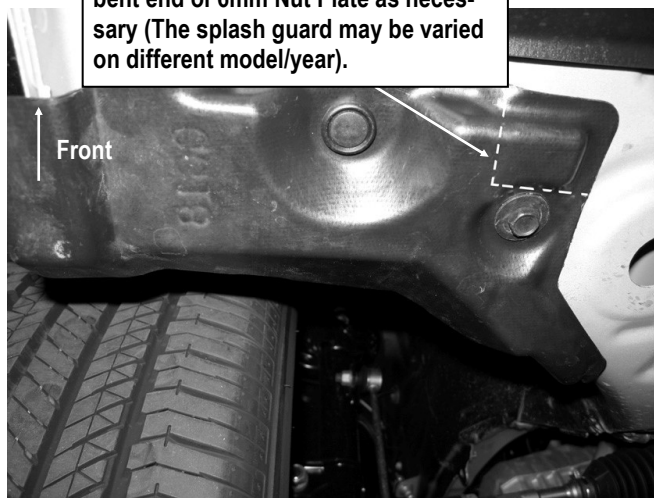
(Fig 6) Driver Front Mounting Bracket Installation

STEP 5

Mark the outline of the location of the Driver Front Mounting Bracket (DFM) onto the bottom of the vehicle for reference if necessary. Temporarily remove the Driver Front Mounting Bracket. Hold the plastic covers up in approximate location against the vehicle. Trace the location of the Bracket onto the plastic cover. Use a hack saw or utility knife to cut out an opening 2" x 3-1/2" on the middle splash guard as pictured, (Fig 8). Cut a 1-1/2" x 1-1/2" opening in the front cover, (Fig 7).

IMPORTANT: The trimming area on the plastic splash guard will be varied on different model/years. Suggest hold up the brackets in position to verify the trimming area before cutting the splash guards. Try to cut as little as possible on the splash guard. Reinstall the splash guards using the factory fasteners.

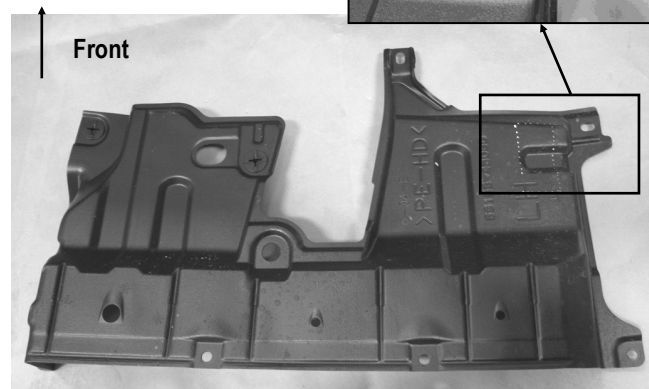
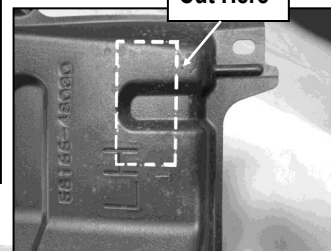
Cut plastic splash guard to clear the bent end of 6mm Nut Plate as necessary (The splash guard may be varied on different model/year).



(Fig 7) Driver Side Front Plastic Splash Guard Trimming

Cut to clear mounting tab on front Bracket as necessary (The splash guard may be varied on different model/year). Remove front Bracket to reinstall the plastic covers.

Cut Here



(Fig 8) Driver Side Middle Plastic Splash Guard Trimming

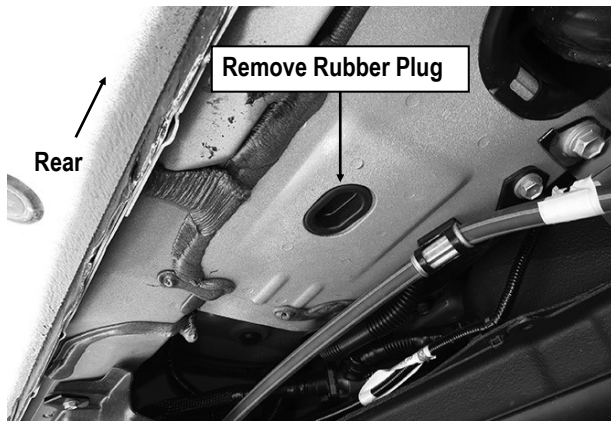
iBoard®

STEP 6

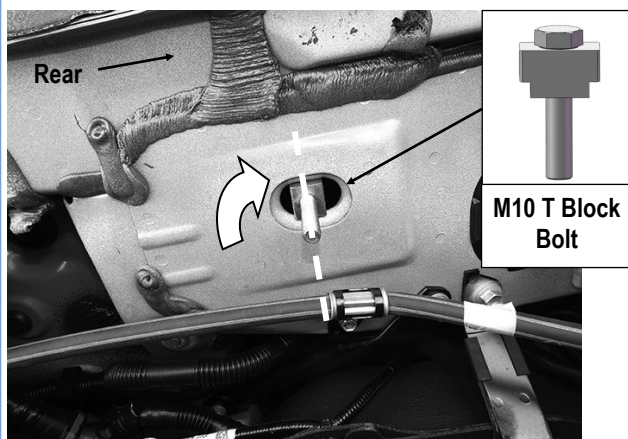
Reinstall the front Bracket as described in **Steps 2—5**. Do not fully tighten hardware at this time.

STEP 7

Next, move to the driver side rear mounting location (**Fig 9**). Remove the rubber grommet located in the rear floor panel. Insert (1) M10 T Block Bolt into the factory hole, (**Fig 10**). **NOTE:** Insert M10 T Block Bolt into the hole. Rotate the T Block Bolt to 90-degrees to across the oval hole, (**Fig 10**).



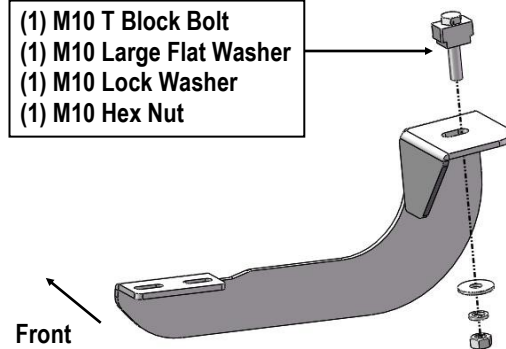
(Fig 9) Driver Side Rear Mounting Location



(Fig 10) M10 T Block Bolt Installed

STEP 8

Select the Driver Rear Mounting Bracket (**DRM**). Attach the rear Bracket to the installed M10 T Block Bolt with the (1) M10 Large Flat Washer, (1) M10 Lock Washer and (1) M10 Hex Nut, (**Fig 11**). Do not fully tighten hardware at this time.



(Fig 11) Driver Rear Mounting Bracket Installation

STEP 9

Once all (2) mounting brackets are installed, then proceed to the Step Bar installation. According to the style of Step Bar proceed to the correct installation STEPS.

Note: Aluminum Step Bar refer to **STEP 10**; Stainless Steel Step Bar skip to **STEP 11**.

STEP 10

Aluminum Step Bar Installation:

Select a **Aluminum Step Bar**. Slip (2) M6x1-20mm Square Head Bolts into each bottom channel (**Fig 12**). Carefully position the Step Bar onto the (2) Mounting Brackets.

IMPORTANT: Do not slide the Step Bar on the Brackets or the bottom surface of the board will be damaged. Attach the Step Bar to each Mounting Brackets with (2) M6x1-20mm Square Head Bolts, (2) M6 Large Flat Washers and (2) M6 Nylon Lock Nuts, (**Fig 13**). Do not fully tighten at this time.

Level and adjust the Step Bar and fully tighten all hardware. Repeat **Steps 1-10** for the other side Step Bar installation. **The installation is completed!!!**

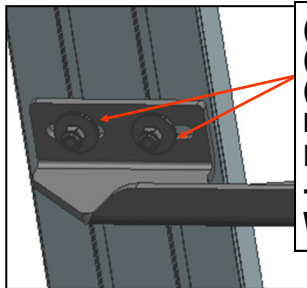
iBoard®



(Fig 12) Slip M6X1-20mm Square Head Bolts Into The Bottom Channels



(Fig 14) Slide & line up the U-Slider with the installed mounting brackets along bottom channel



(2) M6X1-20mm Square Head Bolts
(2) M6 Large Flat Washers
(2) M6 Nylon Lock Nuts
IMPORTANT: TORQUE FOR 6MM FASTNERS MUST LESS THAN 6-7 FT-LBS OR THE FASTNERS WILL BE DAMAGED!

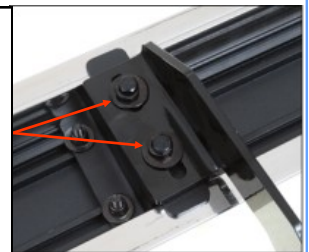
(Fig 13) Running Board Installed Onto Mounting Bracket

STEP 11

Stainless Steel Step Bar Installation:

Select a **Stainless Steel Step Bar** (with the U-Sliders installed on the Bar). Loose the U-Sliders, reposition the U-Sliders onto the board according to the (2) Installed Mounting Brackets location, (Fig 14). Re-secure the U-Sliders on the Step Bar. Attach the Step Bar to the installed Mounting Brackets with (4) M6X1-20mm Hex Bolts, (4) M6 Large Flat Washers & (4) M6 Lock Washers, (Fig 15). Do not fully tighten hardware at this time. Level and adjust the Step Bar and fully tighten all hardware. Repeat **Steps 1-9 and 11** for the other side Step Bar installation. **The installation is completed!!!**

(2) M6X1-20mm Hex Bolts
(2) M6 Large Flat Washers
(2) M6 Lock Washers
IMPORTANT: TORQUE FOR 6MM FASTNERS MUST LESS THAN 6-7 FT-LBS OR THE FASTNERS WILL BE DAMAGED!



(Fig 15) Step Bar Installed on Bracket Installed (Example)

Attention

Do periodic inspections to the installation to make sure that all hardware is secure and tight.

In order to protect your bars/boards, please use only mild soap/non-abrasive products for cleaning.