



iBoard® Series

INSTALLATION INSTRUCTIONS

PART#: IB-060C&H

BEFORE INSTALLATION

REMOVE CONTENTS FROM BOX. VERIFY ALL PARTS ARE PRESENT. READ INSTRUCTIONS CAREFULLY BEFORE STARTING INSTALLATION. ASSISTANCE IS RECOMMENDED. THANK YOU FOR CHOOSING OUR PRODUCT!

***BODY FRAME MOUNT**

***NO DRILLING REQUIRED**

Torque Value

Fastener Size	Tightening Torque (ft-lbs)	Required
6mm	6-7	X
8mm	16-18	√
10mm	31-32	X
12mm	56-58	√
14mm	92-94	X



Scan for
Installation Video

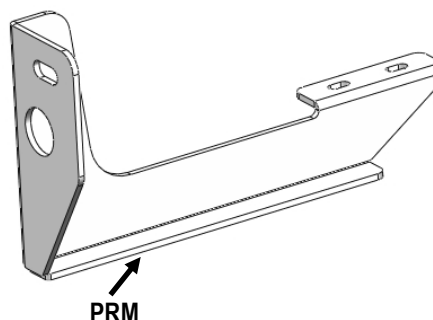
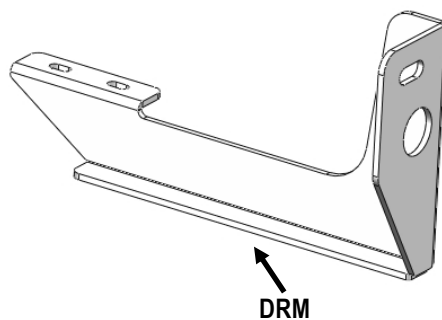
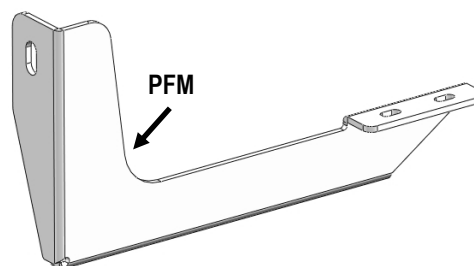
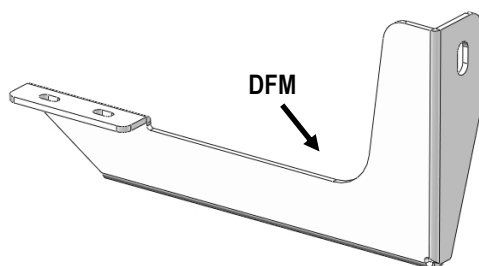
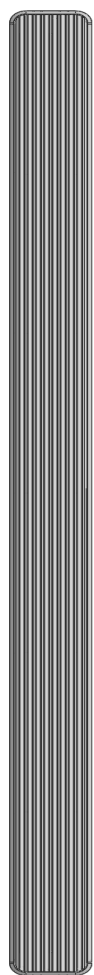
Mounting Bracket List			
Item	QTY	Bracket Label	Description
1#	1	DFM	Mounting Bracket for Driver Front
2#	1	DRM	Mounting Bracket for Driver Rear
3#	1	PFM	Mounting Bracket for Passenger Front
4#	1	PRM	Mounting Bracket for Passenger Rear

PART LIST

Driver Side Step Bar

Front
↑

Passenger Side Step Bar

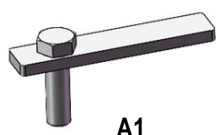




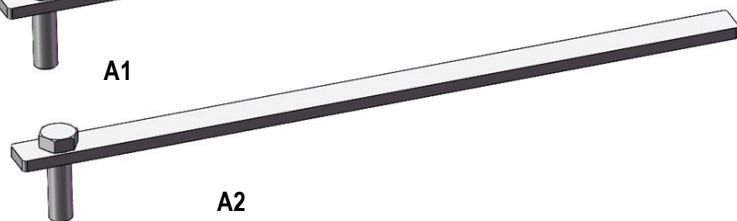
Scan for
Installation Video

Hardware Package A (For Bracket Installation)

Item	QTY	Description	Item	QTY	Description
A1	1	M12 Short Bolt Plates	A4	6	M12 Large Flat Washers
A2	1	M12 Long Bolt Plates	A5	4	M12 Lock Washers
A3	2	M12X1.75-45mm Hex Bolts	A6	4	M12 Hex Nuts



A1



A2



A3



A4



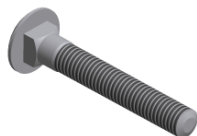
A5



A6

Hardware Package B (For Stainless Steel Step Bar Installation)

Item	QTY	Description	Item	QTY	Description
B1	8	M8X1.25-35mm Carriage Bolts	B3	8	M8 Nylon Lock Nuts
B2	8	M8 Large Flat Washers	B4	4	Sliders (Packed with Step Bars)



B1



B2



B3

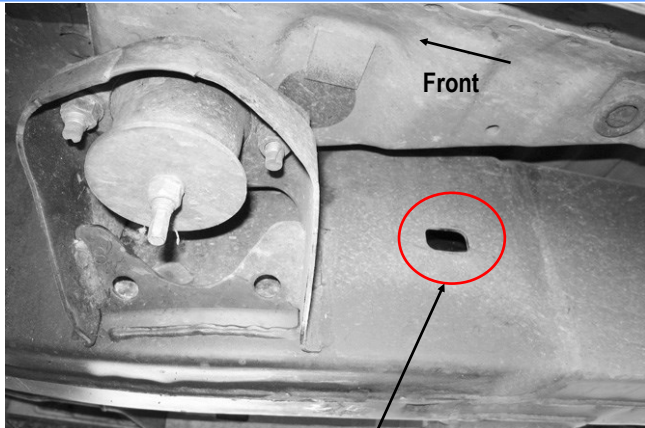


B4



STEP 1

Start installation from the driver side front of the vehicle. Locate the factory rectangular hole on the inner side of the frame behind the front body mount, **(Fig 1)**.

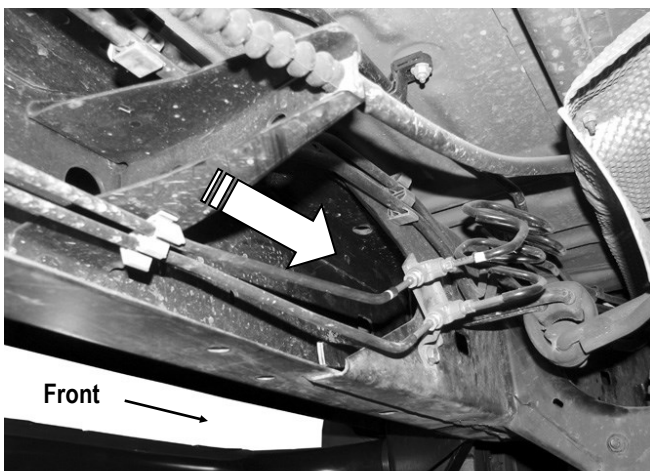


(Fig 1) Driver Side Front Mounting Location

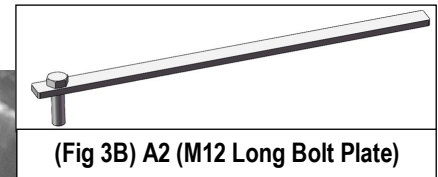
STEP 2

Select the A2 (M12 Long Bolt Plate), **(Fig 3B)**. Insert the M12 welded bolt on the Bolt Plate into the rectangular hole on the frame through the opening end of the frame, **(Fig 2 & 3A)**.

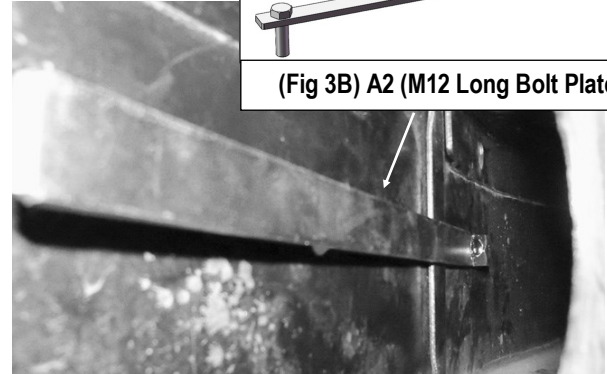
NOTE: The Long Bolt Plate is for driver side front and the Short Bolt Plate is for passenger side front.



**(Fig 2) The Opening End of the frame
(Driver Side Front)**



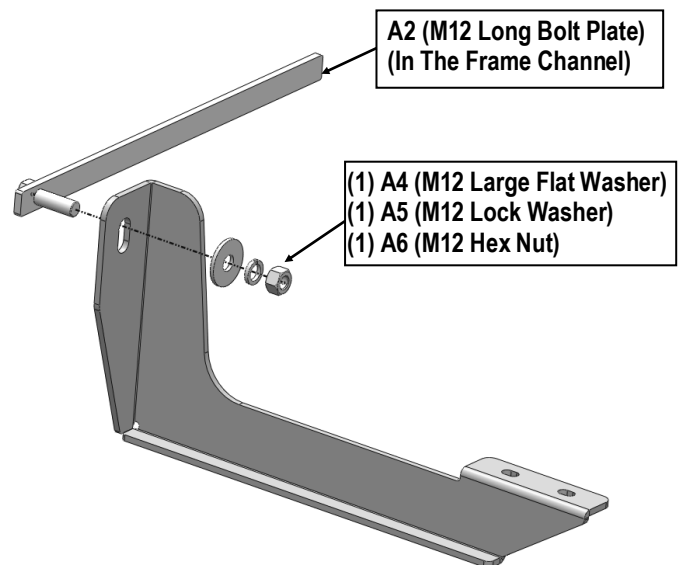
(Fig 3B) A2 (M12 Long Bolt Plate)



**(Fig 3A) Inside View Of M10 Long Bolt Plate Installed
(In Driver Side Frame Channel)**

STEP 3

Attach the Driver Front Mounting Bracket (**DFM**) to the installed A2 (M12 Long Bolt Plate) with (1) A4 (Large M12 Flat Washer), (1) A5 (M12 Lock Washer) and (1) A6 (M12 Hex Nut), **(Fig 4)**. Do not fully tighten hardware at this time.



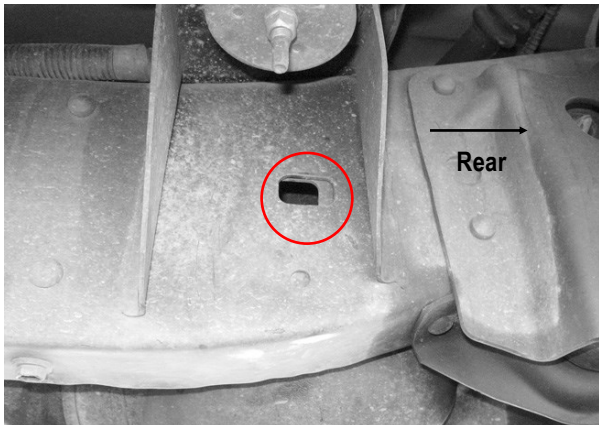
(Fig 4) Driver Front Mounting Bracket (DFM) Installation



STEP 4

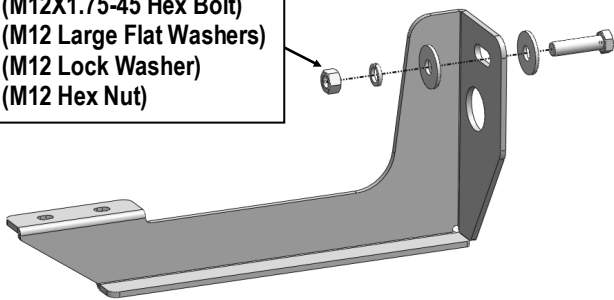
Move to the Driver Side Rear Mounting Location. Locate the factory rectangular on the frame below the rear body mount, **(Fig 5)**.

Select the Driver Rear Mounting Bracket (**DRM**). Attach the Rear Mounting Bracket to the vehicle with (1) A3 (M12X1.75-45mm Hex Bolt), (2) A4 (M12 Large Flat Washer), (1) A5 (M12 Lock Washer) and (1) A6 (M12 Hex Nut), **(Fig 6)**. Do not fully tighten hardware at this time.



(Fig 5) Driver Side Rear Mounting Location

- (1) A3 (M12X1.75-45 Hex Bolt)
- (2) A4 (M12 Large Flat Washers)
- (1) A5 (M12 Lock Washer)
- (1) A6 (M12 Hex Nut)



(Fig 6) Driver Rear Mounting Bracket (DRM) Installation

STEP 5

Once all (2) Driver side mounting brackets are installed, then proceed to the Step Bar installation. **(Figs 7 & 8)**

(Select (1) B4 (Slider) and (2) B1 (M8X1.25-35mm Carriage Bolts);

(2) Install (2) B1 (M8X1.25-35mm Carriage Bolts) in (1) B4 (Slider).

(3) Slide the Slider (with carriage bolts) to the **Step Bar**.

(4) Repeat to install the other (1) B4 (slider) to the step bar.

(5) Attach the Step Bar (with the Sliders) onto the installed mounting brackets. Position the Sliders to the installed brackets. Secure the Step Bar to the installed Brackets by using (4) B2 (M8 Large Flat Washers) and (4) B3 (M8 Nylon Lock Nuts) and (2) B4 (Sliders), **(Fig 8)**. Do not fully tighten hardware at this time.

Note: The Sliders are packed with the Step Bars.

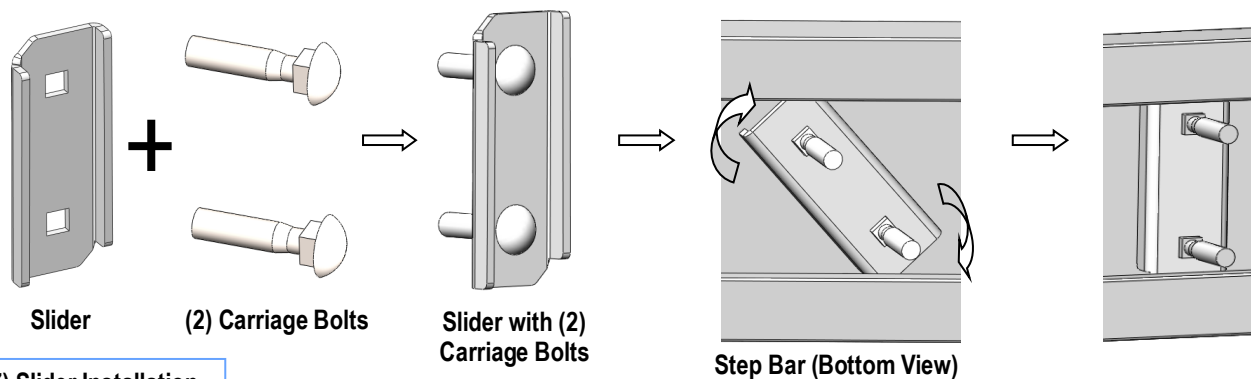
Level and adjust the Step Bar and fully tighten all hardware.

Repeat **Steps 1-5** for the other side Step Bar installation. **The installation is completed!!!**

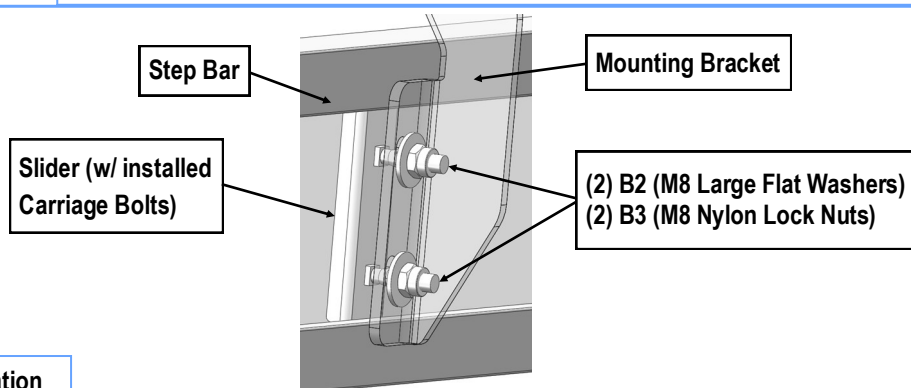
Attention

Do periodic inspections to the installation to make sure that all hardware is secure and tight.

In order to protect your bars/boards, please use mild soap/non-abrasive products for cleaning only.



(Fig 7) Slider Installation



(Fig 8) Step Bar Installation