

# iBoard®

## iBoard® by APS

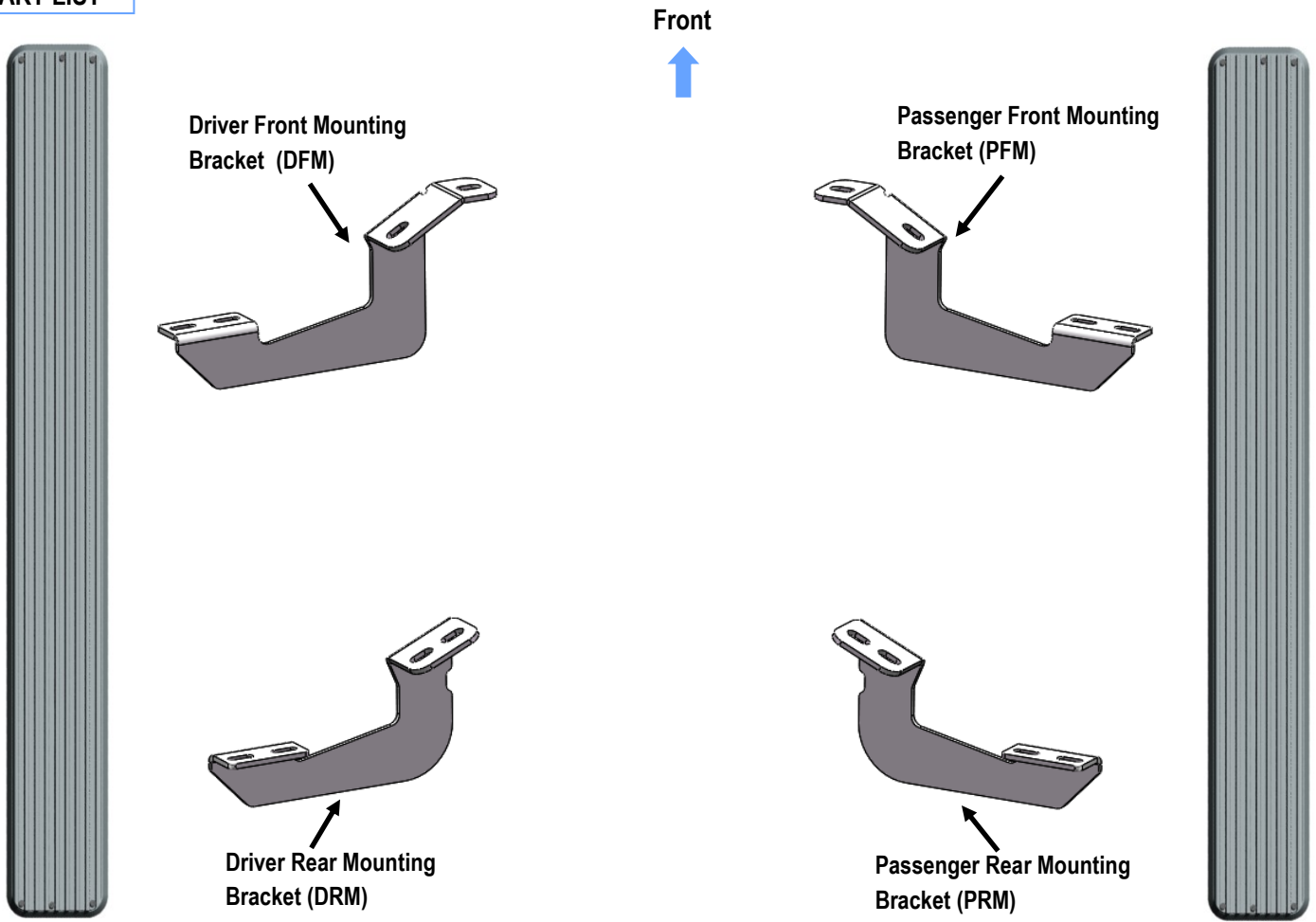
PART#: IB-140A-B

READ INSTRUCTIONS CAREFULLY BEFORE STARTING INSTALLATION. REMOVE CONTENTS FROM BOX AND VERIFY ALL PARTS ARE PRESENT. ASSISTANCE IS RECOMMENDED.

\*ROCKER PANEL MOUNT  
\*NO DRILLING REQUIRED

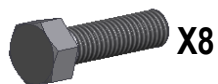
Fastener Size	Tightening Torque (ft-lbs)
6mm	6-7
8mm	16-18
10mm	31-32
12mm	56-58
14mm	92-94

### PART LIST



Customer Support: [info@iboardauto.com](mailto:info@iboardauto.com)

# iBoard®



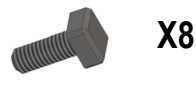
M8X1.25-20mm Hex Bolt



M8 Large Flat Washer



M8 Lock Washer



M6X1-20mm Square Head Bolt



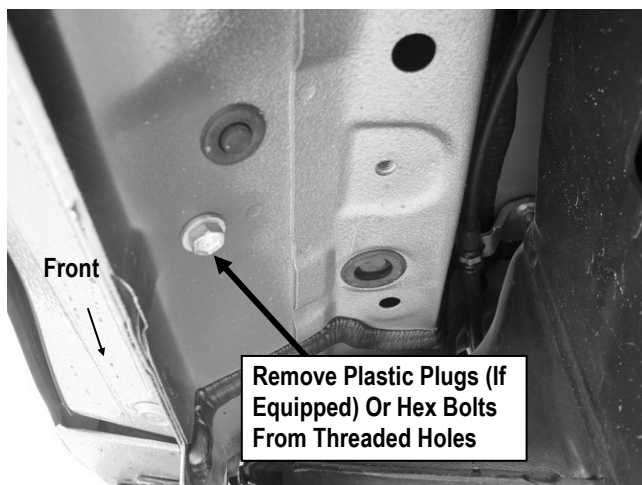
M6 Large Flat Washer



M6X1 Nylon Lock Nut

## STEP 1

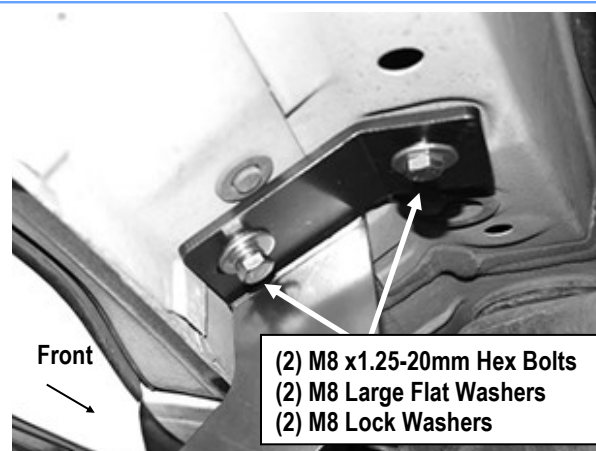
Start installation from the driver side front of the vehicle. Remove the existing (2) factory bolts, (or plastic plugs), on the side panel located by the front tire opening, (Fig 1).



(Fig 1) Driver Front Mounting Bracket Location Pictured

## STEP 2

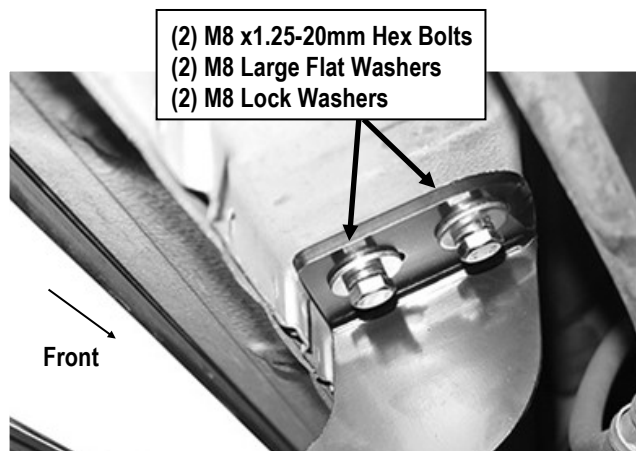
Select the Driver Front Mounting Bracket (DFM). Attach the Bracket to the vehicle using the included (2) M8X1.25-20mm Hex Bolt, (2) M8 Large Flat Washer and (2) M8 Lock Washer, (Fig 2). Do not fully tighten hardware at this time.



(Fig 2) Driver Side Front Mounting Bracket Installation

## STEP 3

Move to the rear of the vehicle. Repeat Steps 1-2 for Driver Rear Mounting Bracket (DRM) installation, (Fig 3). Do not fully tighten hardware at this time.



(Fig 3) Driver Side Rear Mounting Bracket Installation

# iBoard®

## STEP 4

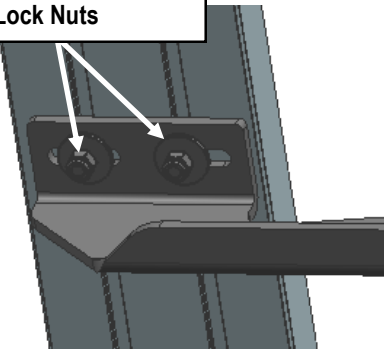
Select a Running Board. Slip (2) M6X1-20mm Square Head Bolts into each bottom channel (**Fig 4**). Carefully position the Running Board onto the (2) Mounting Brackets.

**IMPORTANT:** Do not slide the Running Board on the Brackets or the bottom surface of the board will be damaged. Attach the Running Board to each Mounting Bracket with (2) M6x1-20mm Square Head Bolts, (2) M6 Large Flat Washers and (2) M6 X1 Nylon Lock Nuts (**Fig 5**). Do not fully tighten at this time.



(Fig 4) Slip M6X1-20mm Square Head Bolts Into The Bottom Channels

(2) M6X1-20mm Square Head Bolts  
(2) M6 Large Flat Washers  
(2) M6X1 Nylon Lock Nuts



(Fig 5) Running Board Installed Onto the Mounting Bracket

## STEP 5

Level and adjust the Running Board and fully tighten all hardware.

## STEP 6

Repeat **Steps 1-5** for the other side Running Board installation. The installation is completed (**Fig 6**).



(Fig 6) Installation Completed

### Attention

Do periodic inspections to the installation to make sure that all hardware is secure and tight.

In order to protect your bars/boards, please use only mild soap/non-abrasive products for cleaning.