

iBoard®

iBoard® by APS

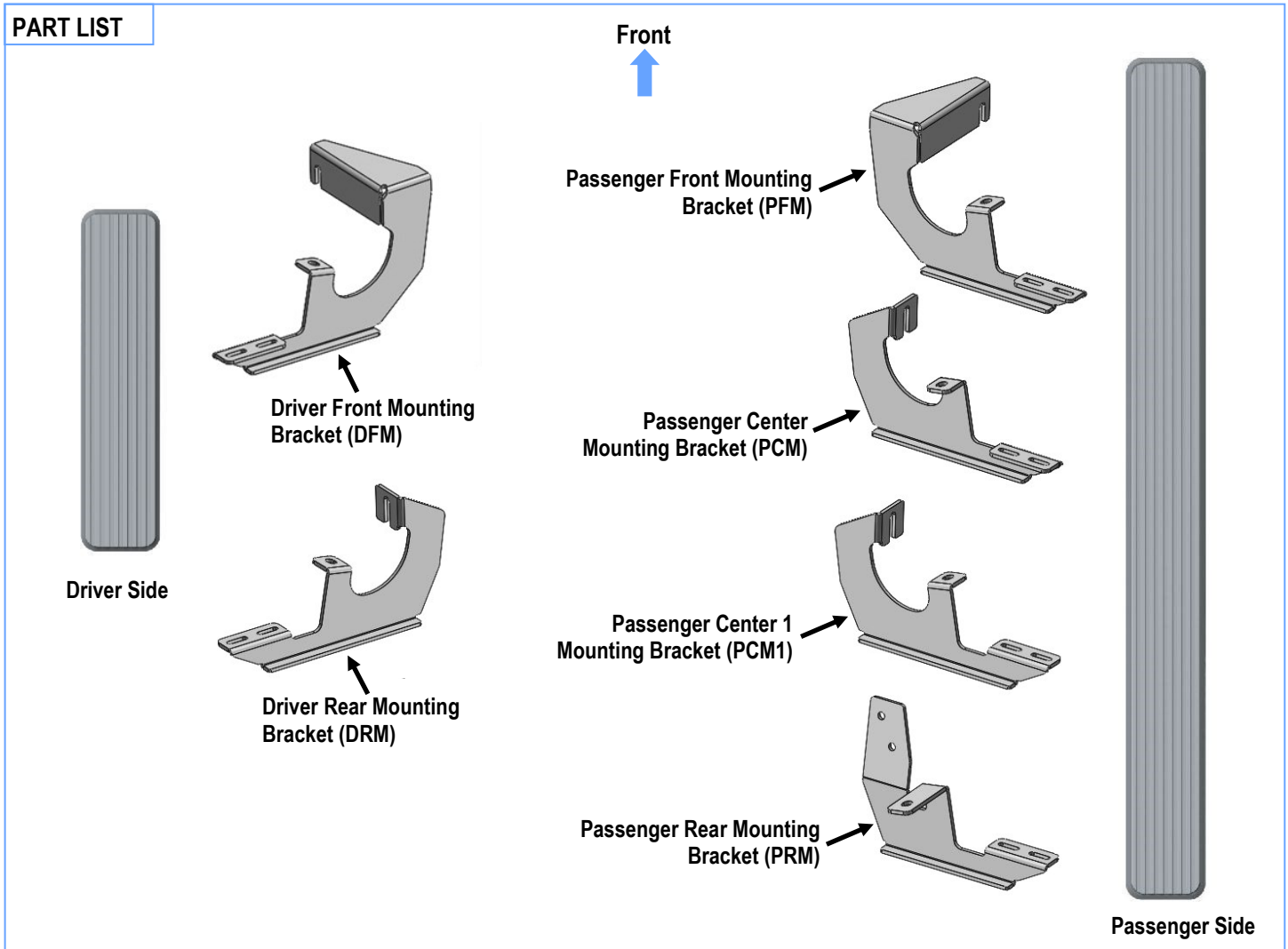
PART#: IB-407

READ INSTRUCTIONS CAREFULLY BEFORE STARTING INSTALLATION. REMOVE CONTENTS FROM BOX AND VERIFY ALL PARTS ARE PRESENT. ASSISTANCE IS RECOMMENDED.

*ROCKER PANEL MOUNT
*DRILLING IS REQUIRED

Fastener Size	Tightening Torque (ft-lbs)	Required
6mm	6-7	√
8mm	16-18	√
10mm	31-32	√
12mm	56-58	X
14mm	92-94	X

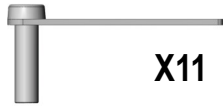
PART LIST



Customer Support: info@iboardauto.com

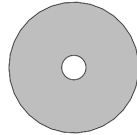
iBoard®

Hardware Package A (For Bracket Installation)



X11

M10 Bolt Plate



X5

M10 Plastic Washer



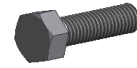
X11

M10 Flat Washer



X11

M10X1.5 Nylon
Lock Nut



X2

M8X1.25-30mm Hex
Bolt



X4

M8 Flat Washer



X2

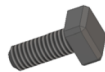
M8 Lock Washer



X2

M8X1.25 Hex Nut

Hardware Package B (For Aluminum Step Bar Installation Only, Not Supply to Stainless Steel Step Bar)



X12

M6X1-20mm Square Head Bolt



X12

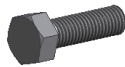
M6 Large Flat Washer



X12

M6X1 Nylon Lock Nut

Hardware Package C (For Stainless Steel Step Bar Installation Only, Not Supply to Aluminum Step Bar)



X12

M6X1-20mm Hex Bolt



X12

M6 Lock Washer



X12

M6 Flat Washer

STEP 1

Starting installation on the passenger side of the vehicle. From the front wheel opening, locate the factory mounting holes along the bottom of the pinch weld and body panel, (Figs 1 & 3).

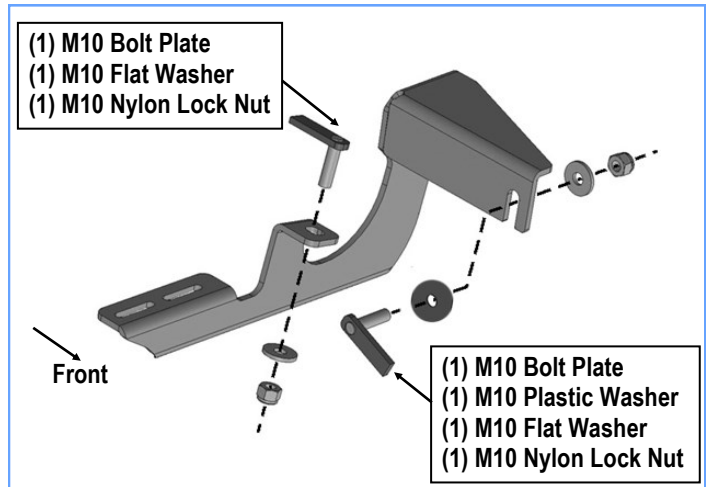
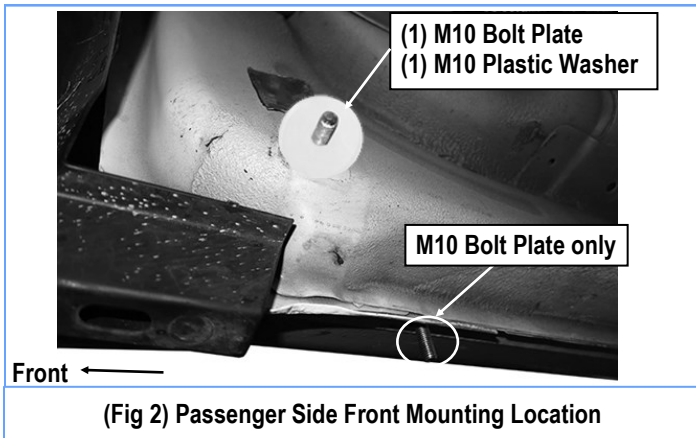
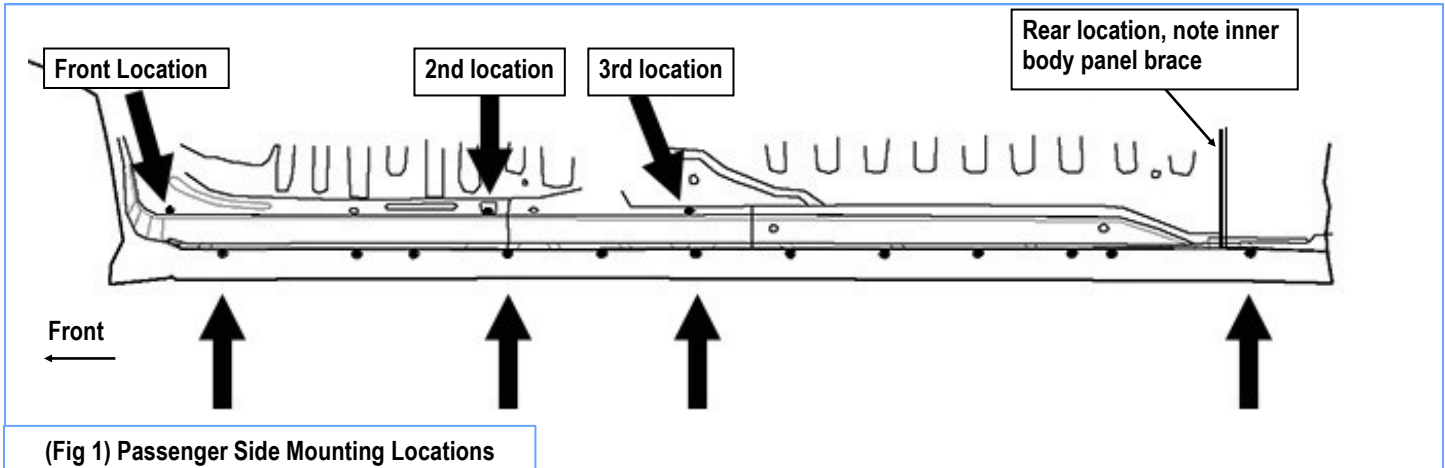
NOTE: Some mounting holes will be covered by plugs or tapes, remove if equipped.

STEP 2

Select (2) M10 Bolt Plates and (1) M10 Plastic Washer. Insert the (2) M10 Bolt Plates into the Passenger Side Front Mounting holes and thread (1) M10 Plastic Washer onto the upper Bolt Plate to hold the bolt plate in place, (Fig 2).

IMPORTANT: The Plastic Washer is designed to prevent the Bolt Plate from falling into the body panel and to aid in Bracket installation. Plastic Washers are not required for the Bolt Plates installed along the bottom of the outer body panel (outside of pinch weld).

iBoard®

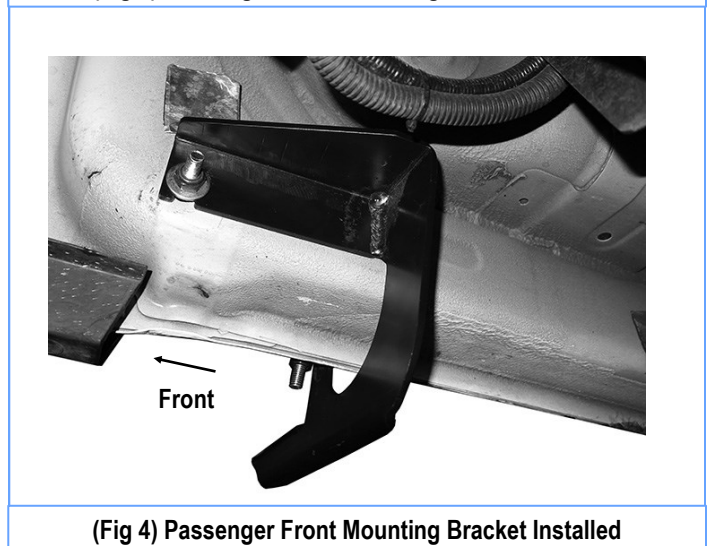


STEP 3

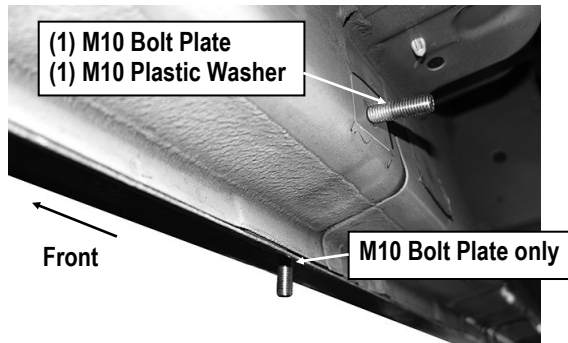
Select the Passenger Front Mounting Bracket (PFM). Attach the Passenger Front Mounting Bracket to the installed (2) M10 Bolt Plates with (2) M10 Flat Washers and (2) M10X1.5 Nylon Lock Nuts, (Figs 3 & 4). Do not fully tighten hardware at this time.

STEP 4

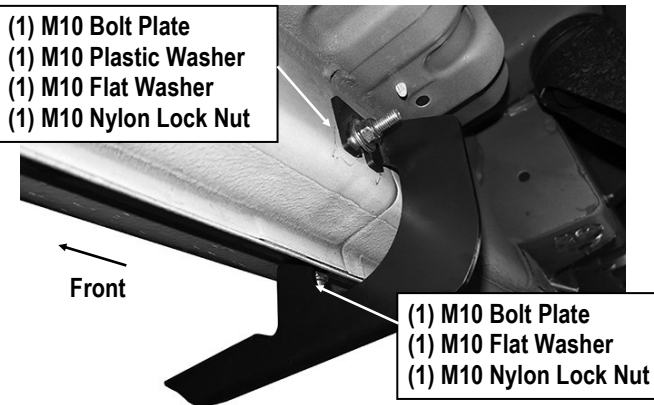
Move to the Passenger Side Center Mounting Location, (Fig 5). Locate the hole in the bottom of the body panel and the hole in the inner side of the body panel. Repeat Steps 1–3 to install the Passenger Center Mounting Bracket (PCM), (Fig 6).



iBoard®



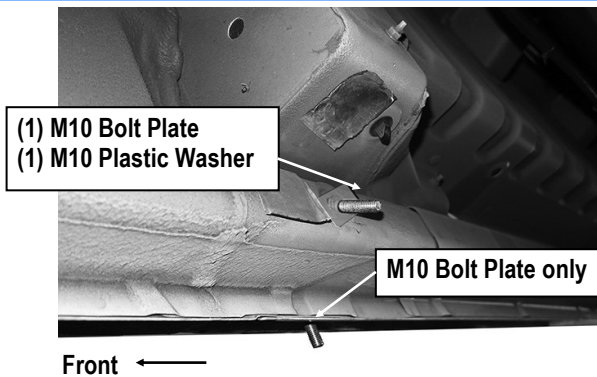
(Fig 5) Passenger Side Center Mounting Location



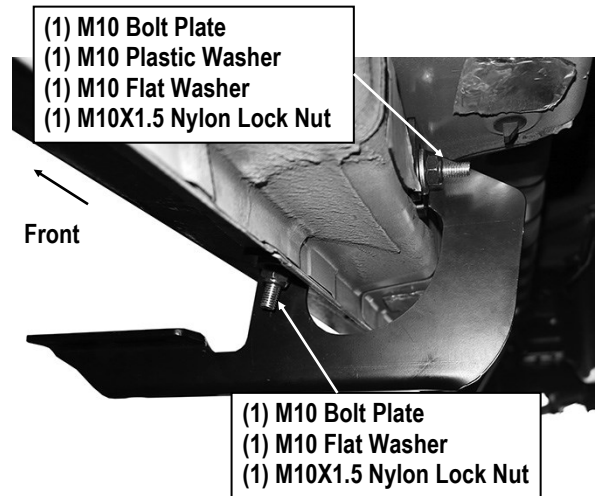
(Fig 6) Passenger Center Mounting Bracket Installed

STEP 5

Move to the 3rd mounting location beneath the front of the sliding door, (Fig 7). Repeat **Steps 1—3** to install the Passenger Center 1 Mounting Bracket (PCM1), (Fig 8).



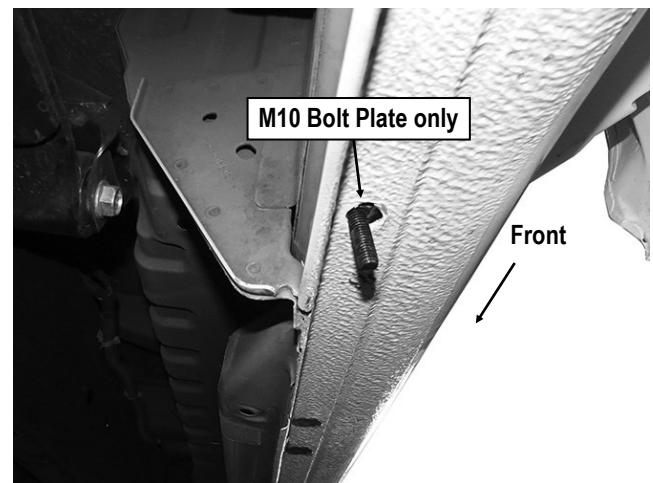
(Fig 7) Passenger Center 1 Mounting Location



(Fig 8) Passenger Center 1 Mounting Bracket Installed

STEP 6

Locate the Passenger Side Rear Mounting Location along the bottom of the body, (Fig 9). Insert (1) M10 Bolt Plate at the bottom of the body panel. Attach the Passenger Rear Mounting Bracket to the installed M10 Bolt Plate with (1) M10 Flat Washer and (1) M10 Nylon Lock Nut, (Fig 16). Line up the mounting plate on the Bracket with the front facing side of the inner body brace, (Fig 14). Do not fully tighten hardware.



(Fig 9) Passenger Rear Mounting Bracket Location

iBoard®

STEP 7

Once all (4) mounting brackets are installed, then proceed to the Step Bar installation. According to the style of Step Bar proceed to the correct installation STEPS.

Note: Aluminum Step Bar refer to STEP 8; Stainless Steel Step Bar skip to STEP 9.

STEP 8

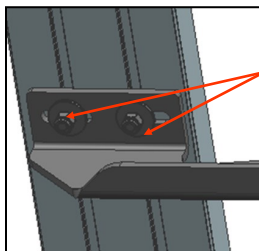
Aluminum Step Bar Installation:

Select a **Aluminum Step Bar**. Slip (4) M6x1-20mm Square Head Bolts into each bottom channel (Fig 10). Carefully position the Step Bar onto the (4) Mounting Brackets.

IMPORTANT: Do not slide the Step Bar on the Brackets or the bottom surface of the board will be damaged. Attach the Step Bar to each Mounting Brackets with (2) M6x1-20mm Square Head Bolts, (2) M6 Large Flat Washers and (2) M6X1 Nylon Lock Nuts, (Fig 11). Do not fully tighten at this time. Level and adjust the Step Bar and fully tighten all hardware. Repeat **Steps 1-8** for the other side Step Bar installation.



(Fig 10) Slip M6X1-20mm Square Head Bolts Into The Bottom Channels



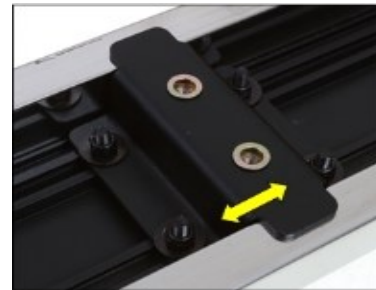
(2) M6X1-20mm Square Head Bolts
(2) M6 Large Flat Washers
(2) M6X1 Nylon Lock Nuts
IMPORTANT: TORQUE FOR 6MM FASTNERS MUST LESS THAN 6-7 FT-LBS OR THE FASTNERS WILL BE DAMAGED!

(Fig 11) Running Board Installed Onto Mounting Bracket

STEP 9

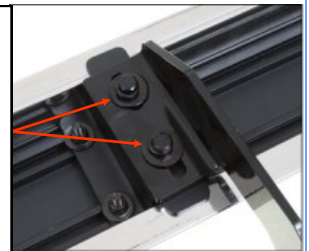
Stainless Steel Step Bar Installation:

Select a **Stainless Steel Step Bar** (with the U-Sliders installed on the Bar). Loose the U-Sliders, reposition the U-Sliders onto the board according to the (4) Installed Mounting Brackets location, (Fig 12). Re-secure the U-Sliders on the Step Bar. Attach the Step Bar to the installed Mounting Brackets with (8) M6X1-20mm Hex Bolts, (8) M6 Large Flat Washers & (8) M6 Lock Washers, (Fig 13). Do not fully tighten hardware at this time. Level and adjust the Step Bar and fully tighten all hardware. Repeat **Steps 1-7 and 9** for the other side Step Bar installation.



(Fig 12) Slide & line up the U-Slider with the installed mounting brackets along bottom channel

(2) M6X1-20mm Hex Bolts
(2) M6 Large Flat Washers
(2) M6 Lock Washers
IMPORTANT: TORQUE FOR 6MM FASTNERS MUST LESS THAN 6-7 FT-LBS OR THE FASTNERS WILL BE DAMAGED!



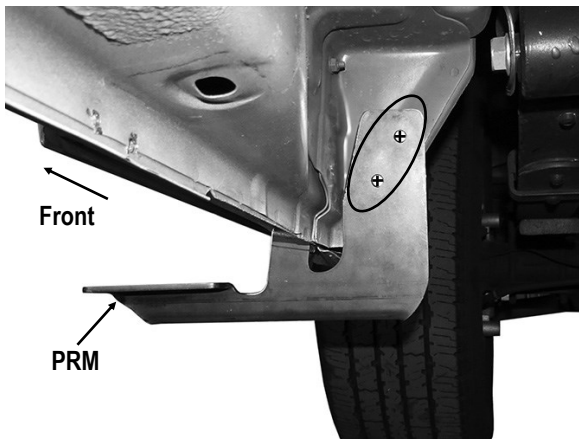
(Fig 13) Step Bar Installed on Bracket Installed (Example)

iBoard®

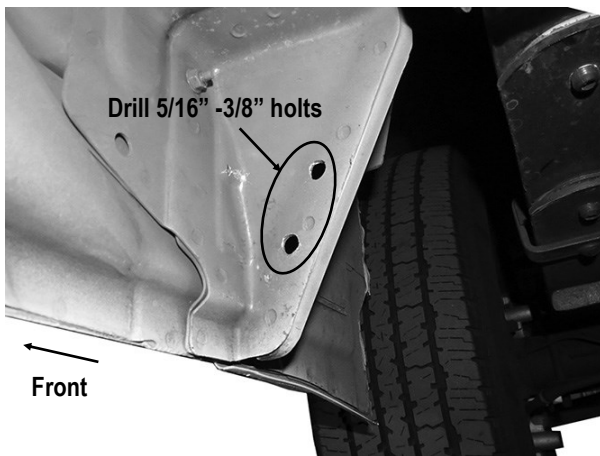
STEP 10

Back to the Passenger Rear Mounting Bracket (**PRM**). With the Running Board level, mark the location of the (2) mounting holes on the Bracket onto the inner body brace, (**Fig 14**). Temporarily remove the Bracket only. Drill (2) 5/16" or 3/8" max holes through the marked locations, (**Fig 15**).

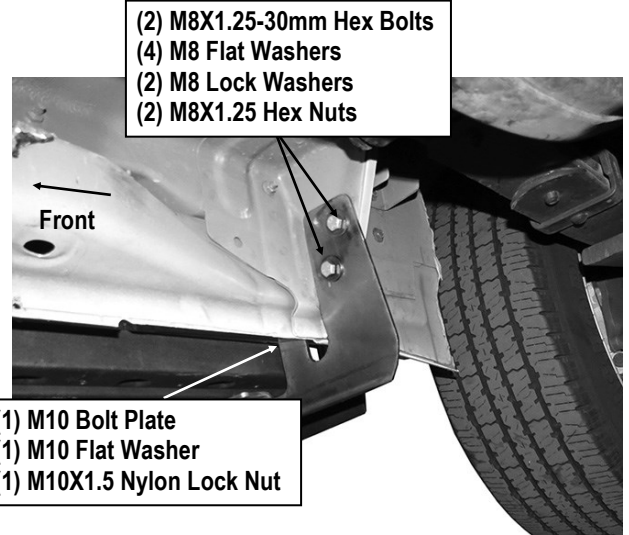
Reinstall the Bracket. Attach Bracket to inner body brace with the included (2) M8X1.25-30mm Hex Bolts, (4) M8 Flat Washers, (2) M8 Lock Washers and (2) M8X1.25 Hex Nuts, (**Fig 16**). Check Running Board for level, adjust as necessary and fully tighten all hardware.



(Fig 14) Mark the Location Of the (2) Mounting Holes



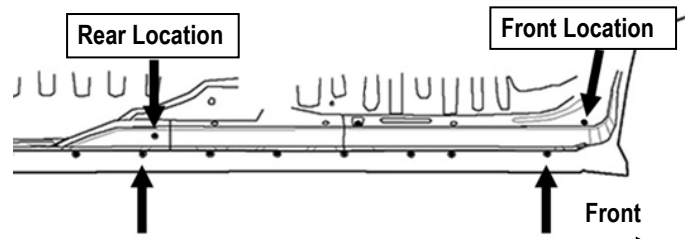
(Fig 15) Drill Holes on Passenger Side Rear Mounting Location



(Fig 16) Passenger Rear Mounting Bracket Complete Installation

STEP 11

Move to the Driver side of the vehicle (**Fig 17**). Repeat **Steps 1-3** to install the driver side (2) Mounting Brackets. Do not fully tighten hardware at this time.



(Fig 17) Driver Side (2) Mounting Locations

iBoard®

STEP 11

Level and adjust the Running Board and fully tighten all hardware.

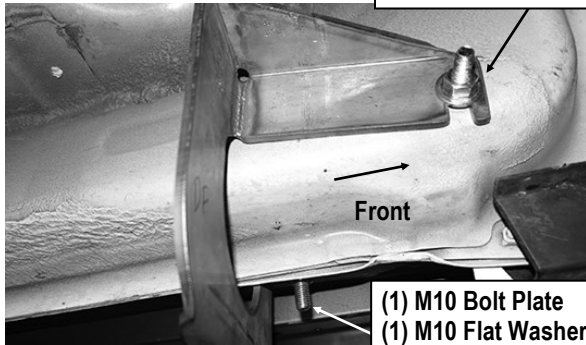
Installation completed.

Attention

Do periodic inspections to the installation to make sure that all hardware is secure and tight.

In order to protect your bars/boards, please use only mild soap/non-abrasive products for cleaning.

- (1) M10 Bolt Plate
- (1) M10 Plastic Washer
- (1) M10 Flat Washer
- (1) M10X1.5 Nylon Lock Nut



- (1) M10 Bolt Plate
- (1) M10 Flat Washer
- (1) M10X1.5 Nylon Lock Nut

(Fig 18) Driver Front Mounting Bracket Installation

STEP 12

Select the Driver Side Running Board (the Short one). Repeat **Steps 7-9** to attach Running Board to the (2) Brackets.