

iBoard®

iBoard® by APS

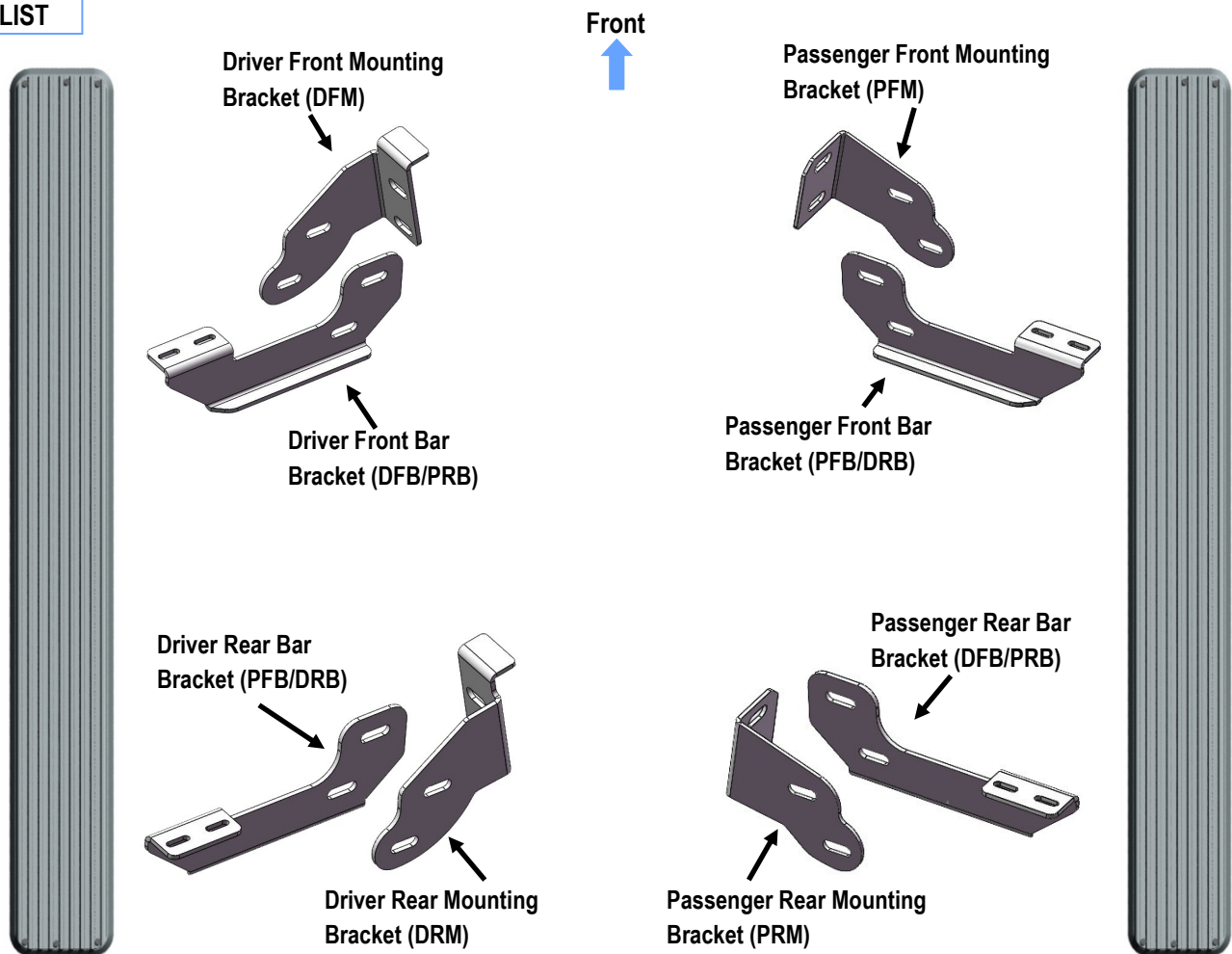
PART#: IB-225A-B

READ INSTRUCTIONS CAREFULLY BEFORE STARTING INSTALLATION. REMOVE CONTENTS FROM BOX AND VERIFY ALL PARTS ARE PRESENT. ASSISTANCE IS RECOMMENDED.

*ROCKER PANEL MOUNT
*NO DRILLING REQUIRED

| Fastener Size | Tightening Torque (ft-lbs) |
|---------------|----------------------------|
| 6mm | 6-7 |
| 8mm | 16-18 |
| 10mm | 31-32 |
| 12mm | 56-58 |
| 14mm | 92-94 |

PART LIST



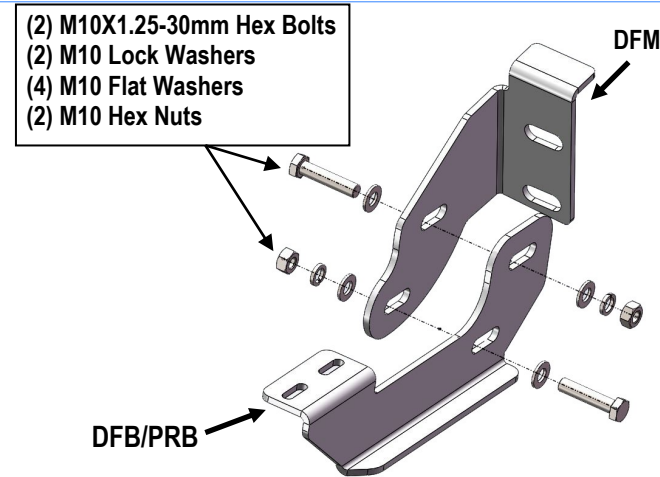
Customer Support: info@iboardauto.com

iBoard®

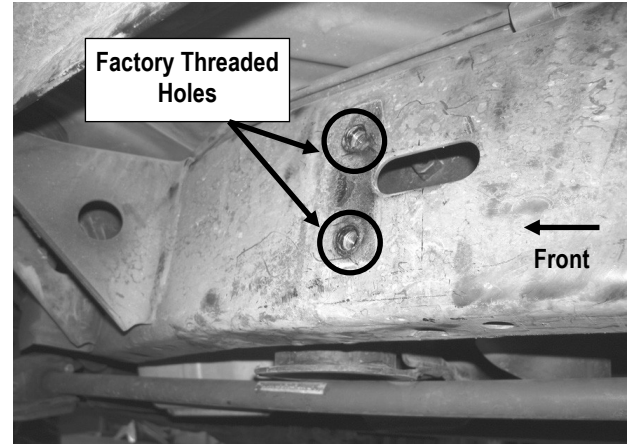


STEP 1

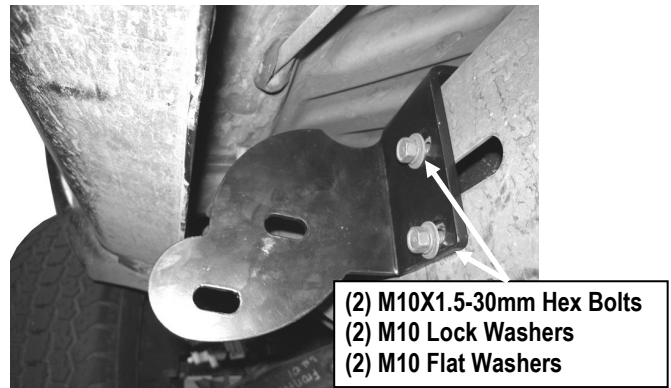
Start installation from the driver side front of the vehicle. Select (1) Driver Front Mounting Bracket (**DFM**) and (1) Driver Front Bar Bracket (**DFB/PRB**), attach the Bar Bracket to the Mounting Bracket with (2) M10X1.25-30mm Hex Bolts, (2) M10 Lock Washers, (4) M10 Flat Washers and (2) M10 Hex Nuts, (**Fig 1**). Do not fully tighten hardware at this time.



(Fig 1) Driver Front Mounting Bracket (DFM) and Driver Front Bar Bracket (DFB/PRB) Assembly



(Fig 2) Driver Side Front Mounting Location



(Fig 3) Driver Front Mounting Bracket (DFM) Installed

STEP 2

Locate (2) threaded holes and (1) slotted hole on the frame on the Driver Front Mounting Location, (**Fig 2**). Attach the Driver Front Mounting Bracket (**DFM**) onto the (2) threaded holes with the included (2) M10X1.5-30mm Hex Bolts, (2) M10 Lock Washers, and (2) M10 Flat Washers (**Fig 3**). Do not fully tighten hardware at this time.

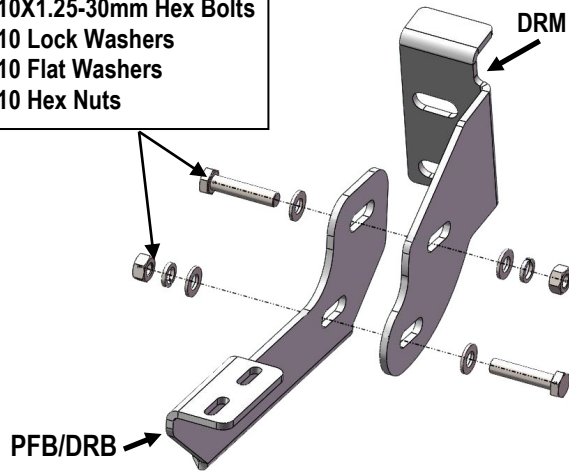
NOTE: The factory bolts in the threaded holes can be re-used to mount the bracket, if equipped.

STEP 3

Move to the Driver Side Rear Mounting Location, repeat **Step 1** to assemble the Driver Rear Mounting Bracket (**DRM**) and the Driver Rear Bar Bracket (**PFB/DRB**), (**Fig 4**). Do not fully tighten hardware at this time.

iBoard®

- (2) M10X1.25-30mm Hex Bolts
- (2) M10 Lock Washers
- (4) M10 Flat Washers
- (2) M10 Hex Nuts

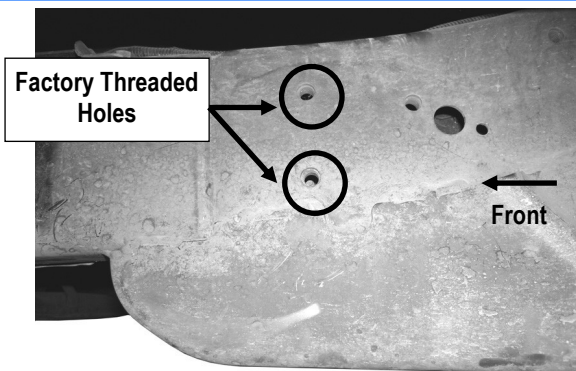


(Fig 4) Driver Rear Mounting Bracket (DRM) and Driver Rear Bar Bracket (PFB/DRB) Assembly

STEP 4

Locate (2) threaded holes and (3) non-threaded holes on the Driver Side Rear Mounting Location (Fig 5). Attach the assembled Driver Rear Mounting Bracket (DRM) onto the (2) threaded holes on the frame with the included (2) M10X1.5-30mm Hex Bolts, (2) M10 Lock Washers, and (2) M10 Flat Washers (Fig 6). Do not fully tighten hardware at this time.

NOTE: The factory bolts in the threaded holes can be re-used to mount the bracket, if equipped.



(Fig 5) Driver Side Rear Mounting Location



- (2) M10X1.5-30mm Hex Bolts
- (2) M10 Lock Washers
- (2) M10 Flat Washers

(Fig 6) Driver Rear Mounting Bracket (DRM) Installed

STEP 5

Select a Running Board. Slip (2) M6x1-20mm Square Head Bolts into each bottom channel (Fig 7). Carefully position the Running Board onto the (2) Mounting Brackets.

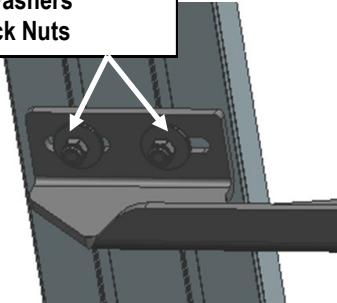
IMPORTANT: Do not slide the Running Board on the Brackets or the bottom surface of the board will be damaged. Attach the Running Board to Mounting Bracket with (4) M6x1-20mm Square Head Bolts, (4) M6 Large Flat Washers and (4) M6 X1 Nylon Lock Nuts (Fig 8). Do not fully tighten hardware at this time.



(Fig 7) Slip M6X1-20mm Square Head Bolts Into The Bottom Channels

iBoard®

- (2) M6X1-20mm Square Head Bolts
- (2) M6 Large Flat Washers
- (2) M6X1 Nylon Lock Nuts



(Fig 8) Running Board Installed Onto the Mounting Bracket
(Example)

STEP 6

Level and adjust the Running Board and fully tighten all hardware.

STEP 7

Repeat **Steps 1-6** for the other side Running Board installation. The installation is completed (**Fig 9**).



(Fig 9) Installation Completed

Attention

Do periodic inspections to the installation to make sure that all hardware is secure and tight.

In order to protect your bars/boards, please use only mild soap/non-abrasive products for cleaning.