

iBoard®

iBoard® by APS

PART#: IB-272

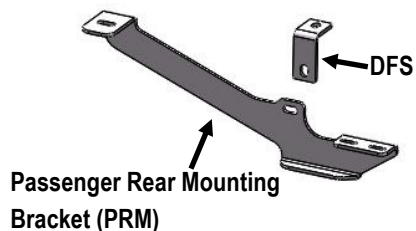
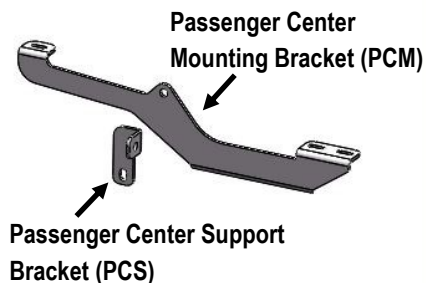
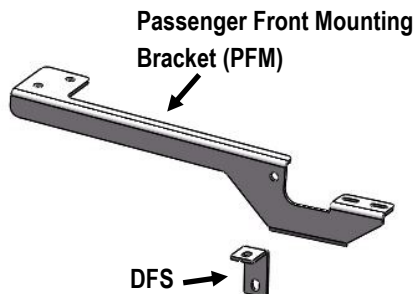
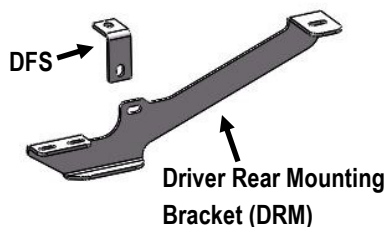
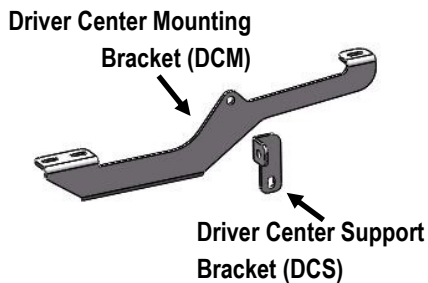
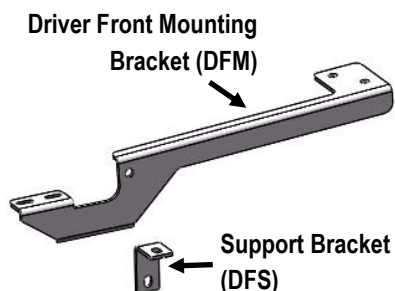
READ INSTRUCTIONS CAREFULLY BEFORE STARTING INSTALLATION. REMOVE CONTENTS FROM BOX AND VERIFY ALL PARTS ARE PRESENT. ASSISTANCE IS RECOMMENDED.

*BODY FRAME MOUNT
*NO DRILLING REQUIRED

Fastener Size	Tightening Torque (ft-lbs)	Required
6mm	6-7	√
8mm	16-18	X
10mm	31-32	√
12mm	56-58	X
14mm	92-94	X

PART LIST

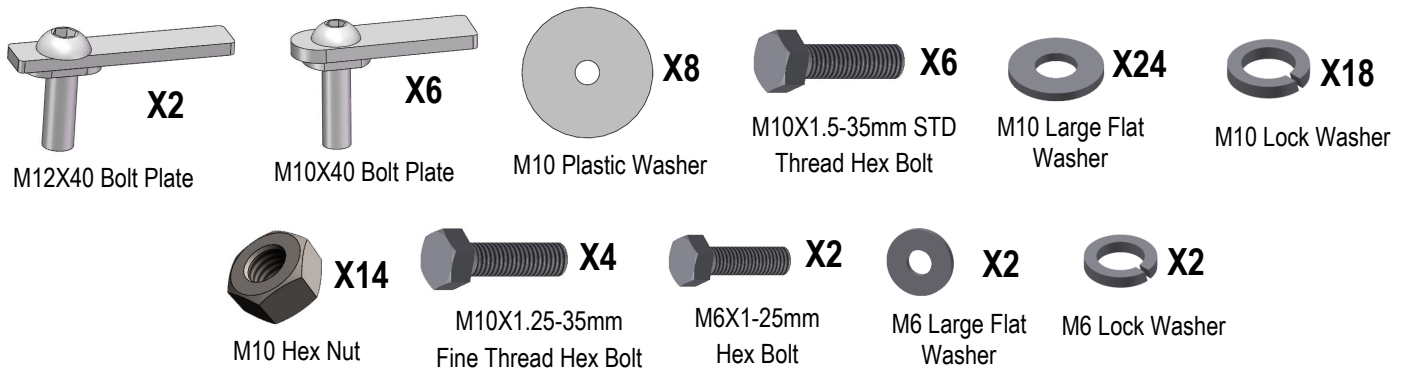
Front
↑



Customer Support: info@iboardauto.com

iBoard®

Hardware Package A (For Bracket Installation)



Hardware Package B (For Aluminum Step Bar Installation Only, Not Supply to Stainless Steel Step Bar)



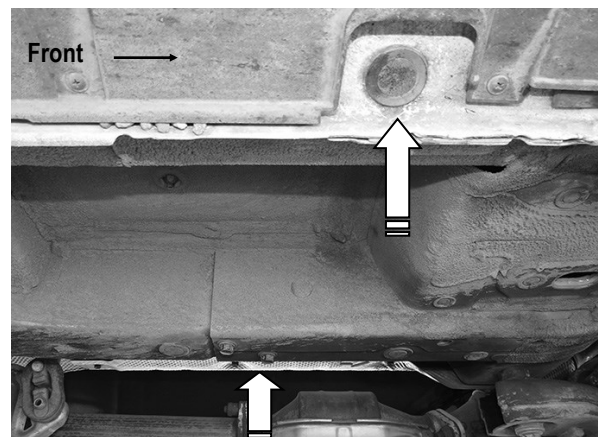
Hardware Package C (For Stainless Steel Step Bar Installation Only, Not Supply to Aluminum Step Bar)



STEP 1

Start installation from the passenger side front of the vehicle. Locate and remove the rubber plug in the body well located next to the outer pinch weld, (Fig 1).

NOTE: All mounting locations may be covered with sealant or thick undercoating. Brackets must fit flush against sheet metal. Scrape off any excess sealant or undercoating.

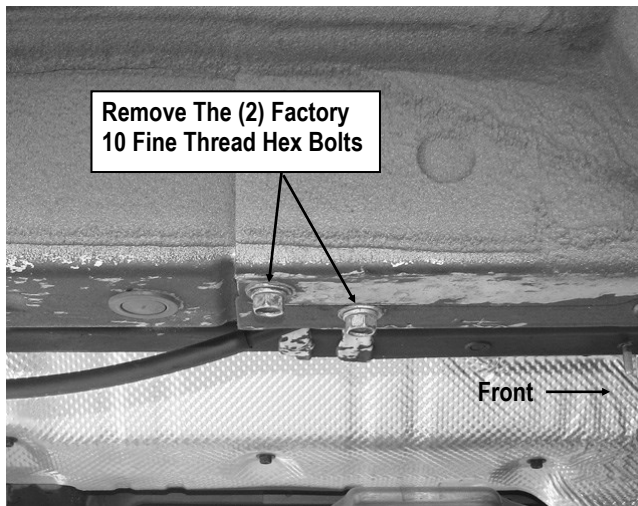


(Fig 1) Passenger Side Front Mounting Location Pictured

iBoard®

STEP 2

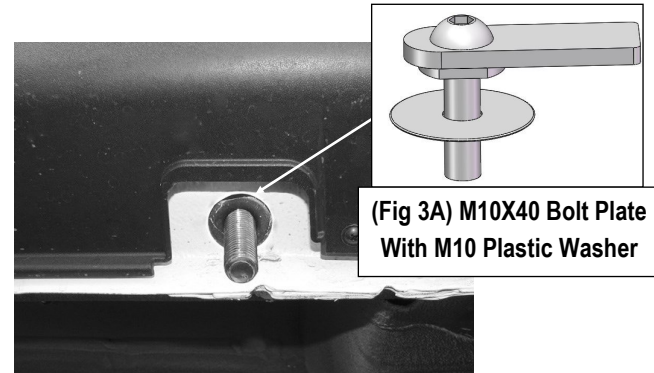
Remove the (2) M10 fine thread factory hex bolts located on the bottom of the inner frame channel, (**Fig 2**). Select the Passenger Front Mounting Bracket (**PFM**). Attach the inner end of the Bracket to the (2) threaded holes in the frame using (2) M10X1.25-35mm Fine Thread Hex Bolts, (2) M10 Washers and (2) M10 Large Flat Washers, (**Fig 5**). Do not fully tighten hardware at this time.



(Fig 2) Passenger Side Front Mounting Location Pictured

STEP 3

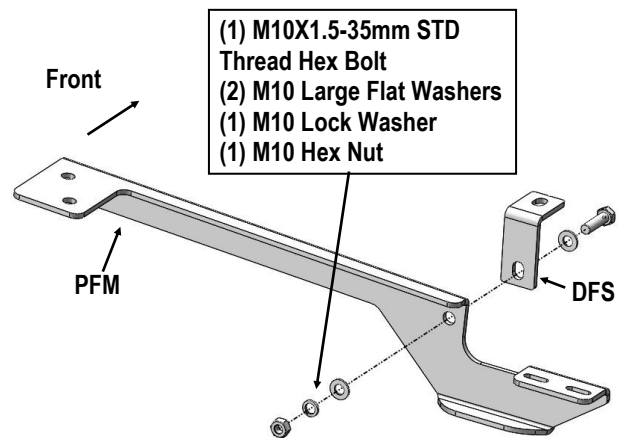
Insert (1) M10X40 Bolt Plate with (1) M10 Plastic Washer into the hole and center it in the hole, (**Fig 3A & 3B**). Attach the shorter bent end of the Support Bracket to the M10 Bolt Plate with (1) M10 Large Flat Washer, (1) M10 Lock Washer and (1) M10 Hex Nut, (**Fig 5**). **NOTE:** Rotate Bracket toward the rear of the vehicle. Do not fully tighten hardware at this time.



(Fig 3B) Insert M10X40 Bolt Plate

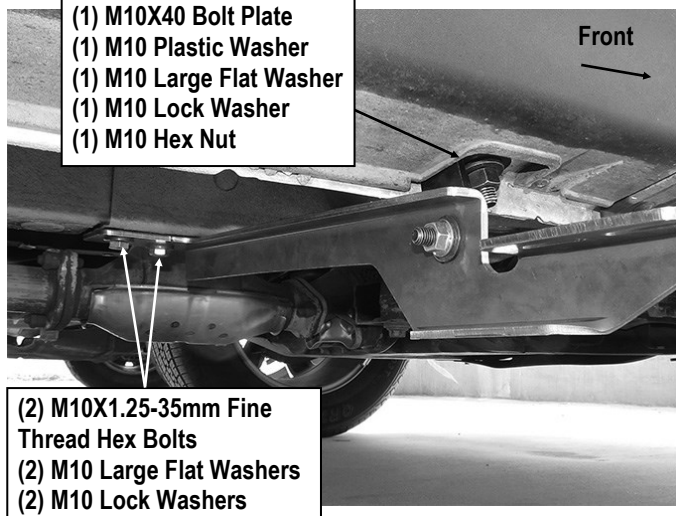
STEP 4

Next, attach the Support Bracket to the Passenger Front Mounting Bracket (**PFM**) with (1) M10X1.5-35mm STD Thread Hex Bolt, (2) M10 Large Flat Washer, (1) M10 Lock Washers and (1) M10 Hex Nuts, (**Fig 4 & 5**). Do not fully tighten hardware at this time.



(Fig 4) Passenger Front Support Bracket Assembly

iBoard®

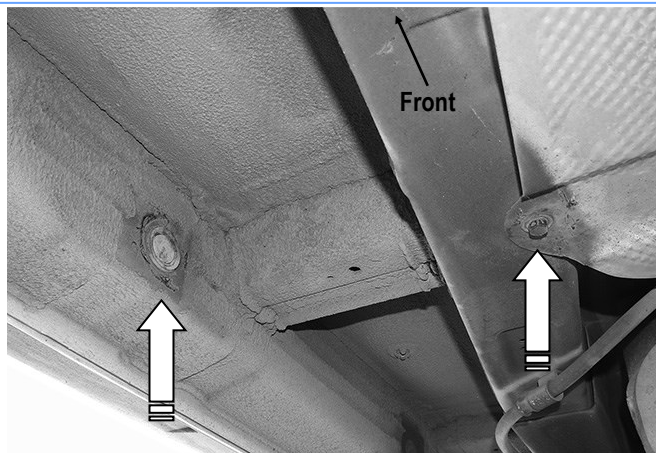


(Fig 5) Support Bracket (DFS) Installation

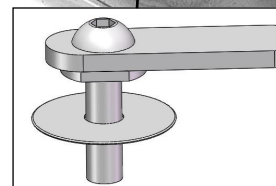
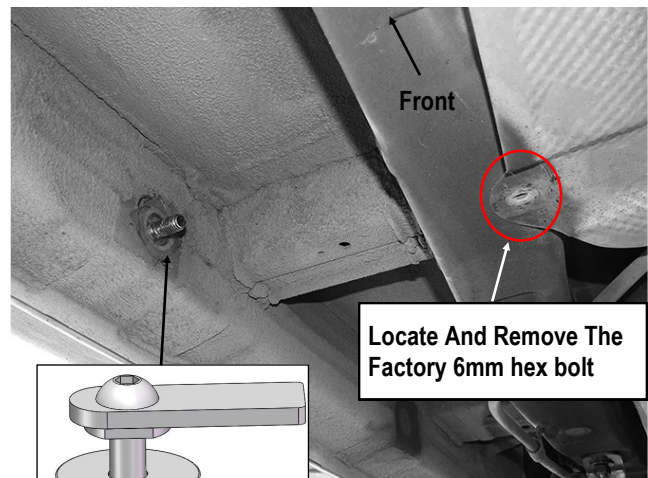
STEP 5

Move to passenger side center mounting location. Locate and remove the rubber plug in the back side of the inner body panel, (Fig 6). Select (1) M10X40 Bolt Plate with (1) M10 Plastic Washer, (Fig 3A). Insert the Bolt Plate into the hole in the side of the body panel. Thread the M10 Plastic Washer down tight against the sheet metal, (Fig 7).

Note: The M10 Plastic Washer is designed to help hold the M10X40 Bolt Plate in place during Bracket installation.



(Fig 6) Passenger Side Center Mounting Location Pictured



(Fig 4A) M10X40 Bolt Plate With M10 Plastic Washer

(Fig 7) Insert M10X40 Bolt Plate

STEP 6

Next, locate and remove the factory 6mm hex bolt attaching the heat shield to the inner frame channel, (Fig 7). **NOTE:** Use the passenger side Center Mounting Bracket to help identify the correct 6mm hex bolt to remove.

Driver side will only have a threaded hole, no heat shield.

STEP 7

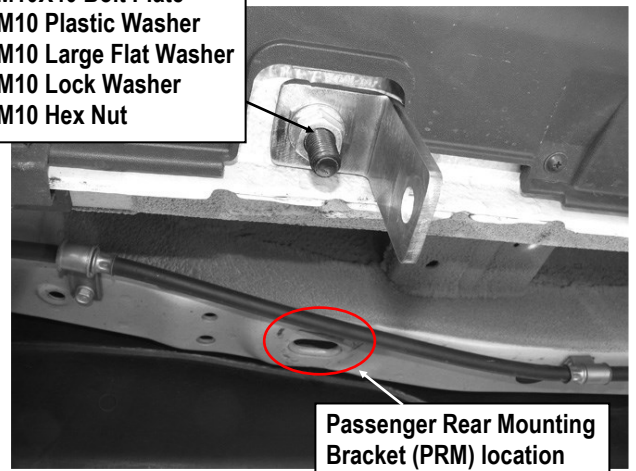
Assemble the Passenger Center Mounting Bracket (PCM) and the Passenger Center Mounting Bracket (PCM) with (1) M10X1.5-35mm STD Thread Hex Bolt, (2) M10 Large Flat Washer, (1) M10 Lock Washers and (1) M10 Hex Nuts, (Fig 8). Do not fully tighten hardware at this time.

iBoard®

STEP 9

Continue along the side of the vehicle toward the rear. Remove the round rubber plug on the outer body panel next to the pinch weld, (Fig 10). Repeat **Step 3** to install the Support Bracket for the rear Mounting Bracket, (Fig 10). **NOTE:** Front and rear Support Brackets are the same but the rear Support Bracket will instead face forward.

- (1) M10X40 Bolt Plate
- (1) M10 Plastic Washer
- (1) M10 Large Flat Washer
- (1) M10 Lock Washer
- (1) M10 Hex Nut



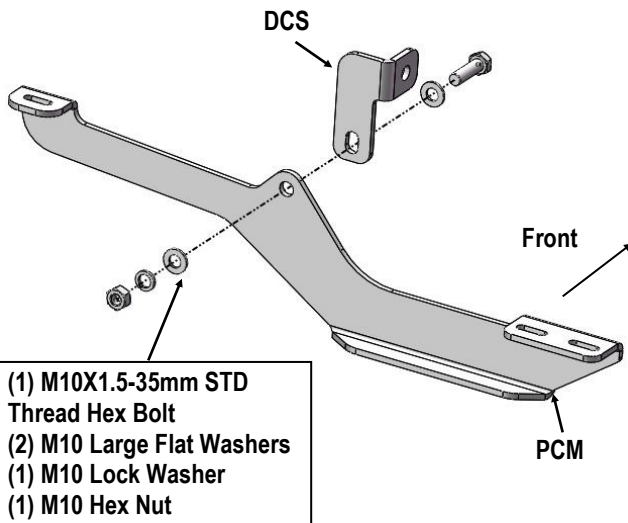
(Fig 10) Passenger Side Rear Mounting Location Pictured

STEP 10

Remove the oval rubber plug, (if equipped), located on the bottom of the inner frame channel, (Fig 10). Thread (1) M10 Plastic Washer partially onto (1) M12X40 Bolt Plate, (Fig 11A). Insert the M12X40 Bolt Plate into the oval hole, (Fig 11B). Thread the M10 Plastic Washer down until it is tight against the frame channel.

Position the passenger side rear Mounting Bracket up to the vehicle. Attach the Mounting Bracket to the M12X40 Bolt Plate with the included (1) M10 Large Flat Washer, (1) M10 Lock Washer and (1) M10 Hex Nut, (Fig 12).

Repeat **Step 4** to bolt the Passenger Rear Mounting Bracket (PRM) to the front of the Support Bracket, (Fig 12). Do not fully tighten at this time.

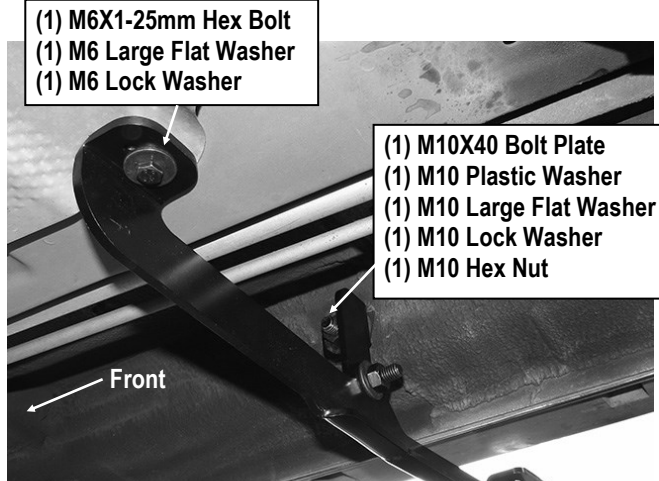


- (1) M10X1.5-35mm STD Thread Hex Bolt
- (2) M10 Large Flat Washers
- (1) M10 Lock Washer
- (1) M10 Hex Nut

(Fig 8) Passenger Center Mounting Bracket Assembly

STEP 8

Select the assembled Passenger Center Mounting Bracket. Attach the bent end of the Support Bracket to the M10 Bolt Plate with (1) M10 Large Flat Washer, (1) M10 Lock Washer and (1) M10 Hex Nut, (Fig 9). Bolt the Center Mounting Bracket to the threaded hole with the included (1) M6X1-25mm Hex Bolt, (1) M6 Lock Washer and (1) M6 Large Flat Washer, (Fig 9). Do not fully tighten hardware at this time.



(Fig 9) Passenger Center Mounting Bracket Installation

iBoard®

STEP 12

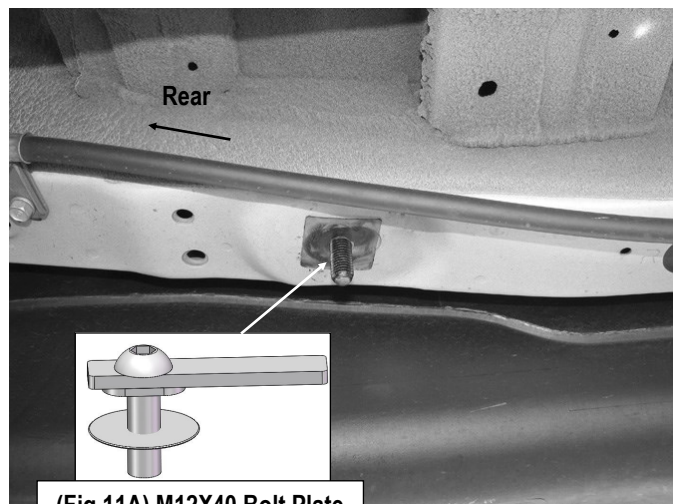
Aluminum Step Bar Installation:

Select a **Aluminum Step Bar**. Slip (3) M6x1-20mm Square Head Bolts into each bottom channel (**Fig 13**). Carefully position the Step Bar onto the (3) Mounting Brackets.

IMPORTANT: Do not slide the Step Bar on the Brackets or the bottom surface of the board will be damaged. Attach the Step Bar to each Mounting Brackets with (2) M6x1-20mm Square Head Bolts, (2) M6 Large Flat Washers and (2) M6 Nylon Lock Nuts, (**Fig 14**). Do not fully tighten at this time.

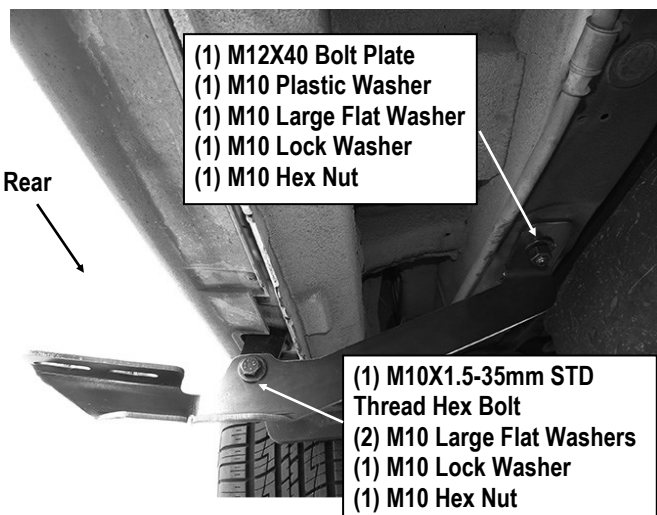
Level and adjust the Step Bar and fully tighten all hardware.

Repeat **Steps 1-12** for the other side Step Bar installation. **The installation is completed!!!**



(Fig 11A) M12X40 Bolt Plate With M10 Plastic Washer

(Fig 11B) Insert M12X40 Bolt Plate



(Fig 12) Passenger Rear Mounting Bracket Installation

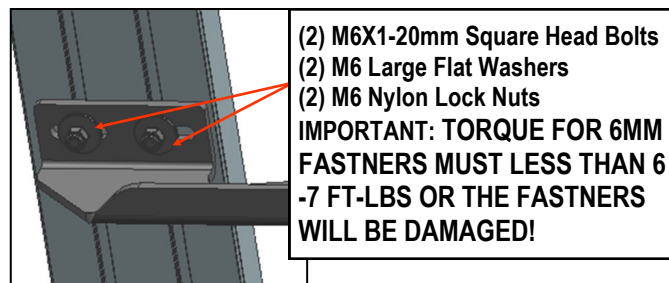
STEP 11

Once all (3) mounting brackets are installed, then proceed to the Step Bar installation. According to the style of Step Bar proceed to the correct installation STEPS.

Note: Aluminum Step Bar refer to STEP 12; Stainless Steel Step Bar skip to STEP 13.



(Fig 13) Slip M6X1-20mm Square Head Bolts Into The Bottom Channels



(Fig 14) Running Board Installed Onto Mounting Bracket

iBoard®

STEP 13

Stainless Steel Step Bar Installation:

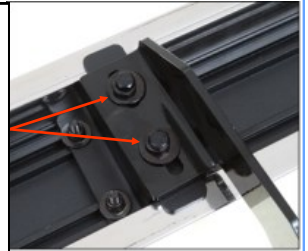
Select a **Stainless Steel Step Bar** (with the U-Sliders installed on the Bar). Loose the U-Sliders, reposition the U-Sliders onto the board according to the (3) Installed Mounting Brackets location, **(Fig 15)**. Re-secure the U-Sliders on the Step Bar. Attach the Step Bar to the installed Mounting Brackets with (6) M6X1-20mm Hex Bolts, (6) M6 Large Flat Washers & (6) M6 Lock Washers, **(Fig 16)**. Do not fully tighten hardware at this time.

Level and adjust the Step Bar and fully tighten all hardware. Repeat **Steps 1-11 and 13** for the other side Step Bar installation. **The installation is completed!!!**



(Fig 15) Slide & line up the U-Slider with the installed mounting brackets along bottom channel

(2) M6X1-20mm Hex Bolts
(2) M6 Large Flat Washers
(2) M6 Lock Washers
IMPORTANT: TORQUE FOR 6MM FASTNERS MUST LESS THAN 6-7 FT-LBS OR THE FASTNERS WILL BE DAMAGED!



(Fig 16) Step Bar Installed on Bracket Installed (Example)

Attention

Do periodic inspections to the installation to make sure that all hardware is secure and tight.

In order to protect your bars/boards, please use only mild soap/non-abrasive products for cleaning.