

iBoard®

iBoard® by APS

PART#: IB-339

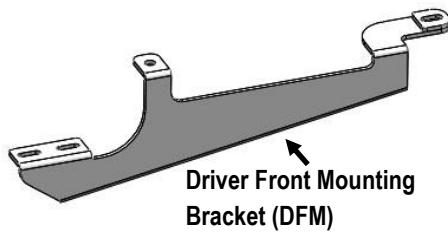
READ INSTRUCTIONS CAREFULLY BEFORE STARTING INSTALLATION. REMOVE CONTENTS FROM BOX AND VERIFY ALL PARTS ARE PRESENT. ASSISTANCE IS RECOMMENDED.

*BODY FRAME MOUNT
*DRILLING IS REQUIRED

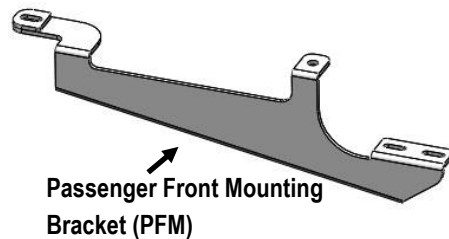
Fastener Size	Tightening Torque (ft-lbs)	Required
6mm	6-7	√
8mm	16-18	X
10mm	31-32	√
12mm	56-58	X
14mm	92-94	X

PART LIST

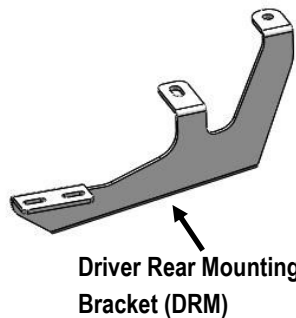
Front
↑



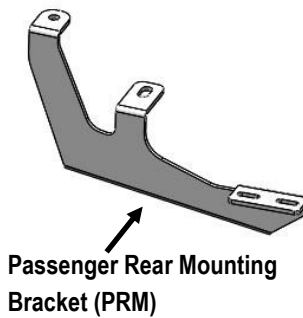
Driver Front Mounting Bracket (DFM)



Passenger Front Mounting Bracket (PFM)



Driver Rear Mounting Bracket (DRM)



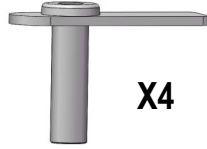
Passenger Rear Mounting Bracket (PRM)



Customer Support: info@iboardauto.com

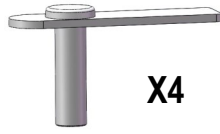
iBoard®

Hardware Package A (For Bracket Installation)



X4

M10X35 Short Bolt Plate



X4

M10X35 Long Bolt Plate



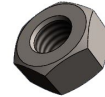
X8

M10 Large Flat Washer



X8

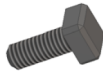
M10 Lock Washer



X8

M10 Hex Nut

Hardware Package B (For Aluminum Step Bar Installation Only, Not Supply to Stainless Steel Step Bar)



X8

M6X1-20mm Square Head Bolt



X8

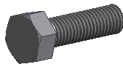
M6 Large Flat Washer



X8

M6 Nylon Lock Nut

Hardware Package C (For Stainless Steel Step Bar Installation Only, Not Supply to Aluminum Step Bar)



X8

M6X1-20mm Hex Bolt



X8

M6 Lock Washer

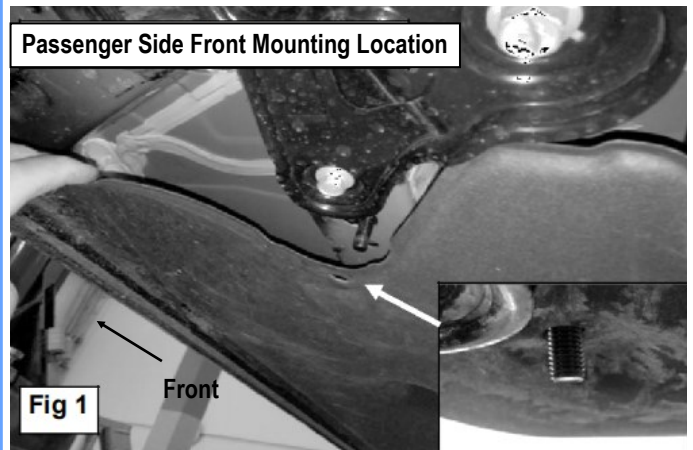


X8

M6 Flat Washer

STEP 1

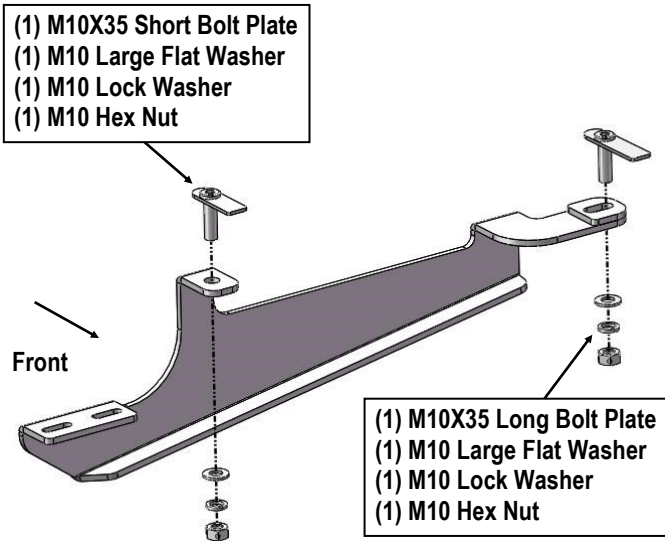
Start installation from the passenger side front of the vehicle. Partially remove the front part of the undercover to locate and remove the round rubber plug on the bottom of the inner frame channel. Insert (1) M10x35 Long Bolt Plate into the hole. Insert the threaded bolt through the hole of the undercover, (Fig 1).



iBoard®

STEP 2

Remove the plastic round plug located on the outside of the pinch weld. Insert (1) M10X35 Short Bolt Plate into the hole. Attach the Passenger Front Mounting Bracket (PFM) to the installed Bolt plates with (2) M10 Large Flat Washers, (2) M10 Lock Washers and (2) M10 Hex Nuts, (Fig 2). Do not fully tighten hardware at this time. Reinstall the undercover.



(Fig 2) Passenger Front Mounting Bracket Installation

STEP 3

Move to the passenger side rear mounting location of the vehicle. Locate and remove the rubber plug on the mounting location. Insert (1) M10x35 Long Bolt Plate into the hole (Fig 3). And attached Passenger Rear Mounting Bracket (PRM) to the installed Bolt plate. Use the bracket as template, mark the slot position on the body panel (Fig 4).



(Fig 3) Remove Rubber Plug

Mark the drilling position

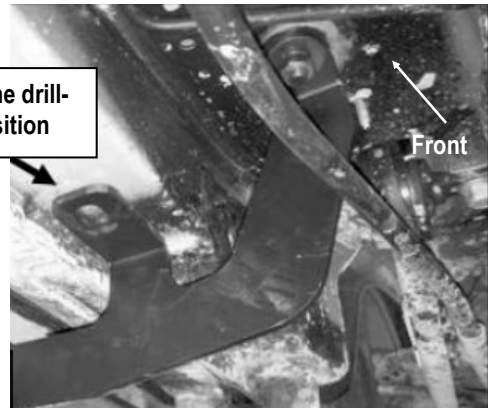


Fig 4

STEP 4

Remove bracket and drill a 3/16" hole on the body panel according to the mark. Enlarge the hole to 7/8" with a unibit (Fig 5 & 6). Suggest to paint the drilled hole with undercoating for antirust. And then insert (1) M10x35 Short Bolt Plate into the hole.

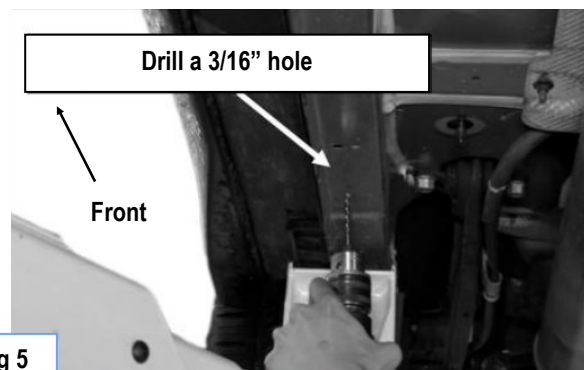


Fig 5

iBoard®

Enlarge hole to 7/8" with unibit

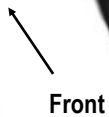
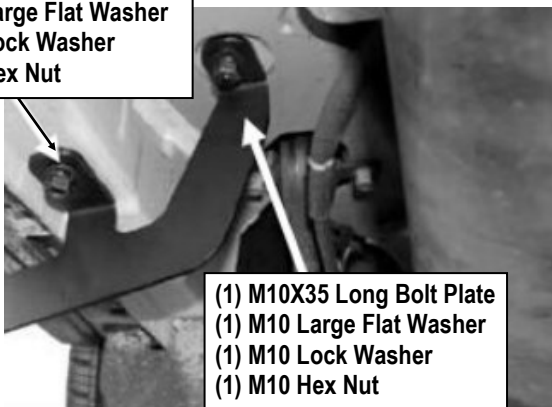
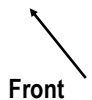


Fig 6

STEP 5

Attach the Passenger Rear Mounting Bracket (PRM) to the installed Bolt plates with (2) M10 Large Flat Washers, (2) M10 Lock Washers and (2) M10 Hex Nuts, (Fig 7). Do not fully tighten hardware at this time.

- (1) M10X35 Short Bolt Plate
- (1) M10 Large Flat Washer
- (1) M10 Lock Washer
- (1) M10 Hex Nut



- (1) M10X35 Long Bolt Plate
- (1) M10 Large Flat Washer
- (1) M10 Lock Washer
- (1) M10 Hex Nut

(Fig 7) Passenger Rear Mounting Bracket Installation

STEP 6

Once all (2) mounting brackets are installed, then proceed to the Step Bar installation. According to the style of Step Bar proceed to the correct installation STEPS.

Note: Aluminum Step Bar refer to STEP 7; Stainless Steel Step Bar skip to STEP 8.

STEP 7

Aluminum Step Bar Installation:

Select a **Aluminum Step Bar**. Slip (2) M6x1-20mm Square Head Bolts into each bottom channel (8). Carefully position the Step Bar onto the (2) Mounting Brackets.

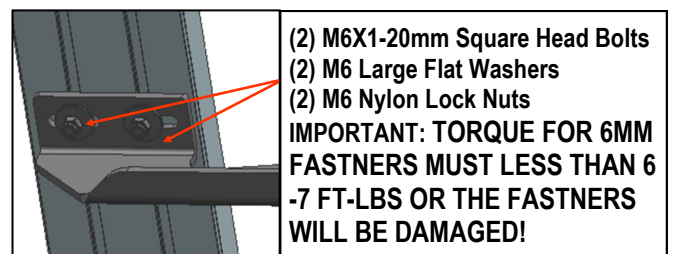
IMPORTANT: Do not slide the Step Bar on the Brackets or the bottom surface of the board will be damaged. Attach the Step Bar to each Mounting Brackets with (2) M6x1-20mm Square Head Bolts, (2) M6 Large Flat Washers and (2) M6 Nylon Lock Nuts, (Fig 9). Do not fully tighten at this time.

Level and adjust the Step Bar and fully tighten all hardware.

Repeat **Steps 1-8** for the other side Step Bar installation. **The installation is completed!!!**



(Fig 8) Slip M6X1-20mm Square Head Bolts Into The Bottom Channels



- (2) M6X1-20mm Square Head Bolts
 - (2) M6 Large Flat Washers
 - (2) M6 Nylon Lock Nuts
- IMPORTANT: TORQUE FOR 6MM FASTENERS MUST LESS THAN 6 -7 FT-LBS OR THE FASTENERS WILL BE DAMAGED!**

(Fig 9) Running Board Installed Onto Mounting Bracket

iBoard®

STEP 8

Stainless Steel Step Bar Installation:

Select a **Stainless Steel Step Bar** (with the U-Sliders installed on the Bar). Loose the U-Sliders, reposition the U-Sliders onto the board according to the (2) Installed Mounting Brackets location, (**Fig 10**). Re-secure the U-Sliders on the Step Bar. Attach the Step Bar to the installed Mounting Brackets with (4) M6X1-20mm Hex Bolts, (4) M6 Large Flat Washers & (4) M6 Lock Washers, (**Fig 11**). Do not fully tighten hardware at this time.

Level and adjust the Step Bar and fully tighten all hardware.

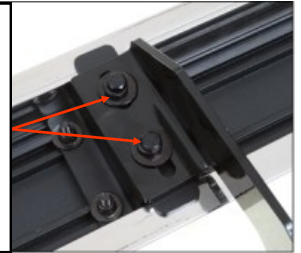
Repeat **Steps 1-6 and 8** for the other side Step Bar installation.
The installation is completed!!!



(Fig 10) Slide & line up the U-Slider with the installed mounting brackets along bottom channel

- (2) M6X1-20mm Hex Bolts
- (2) M6 Large Flat Washers
- (2) M6 Lock Washers

IMPORTANT: TORQUE FOR 6MM FASTNERS MUST LESS THAN 6-7 FT-LBS OR THE FASTNERS WILL BE DAMAGED!



(Fig 11) Step Bar Installed on Bracket Installed (Example)

Attention

Do periodic inspections to the installation to make sure that all hardware is secure and tight.

In order to protect your bars/boards, please use only mild soap/non-abrasive products for cleaning.