

iBoard®



Scan for
Installation Video

iBoard® by APS

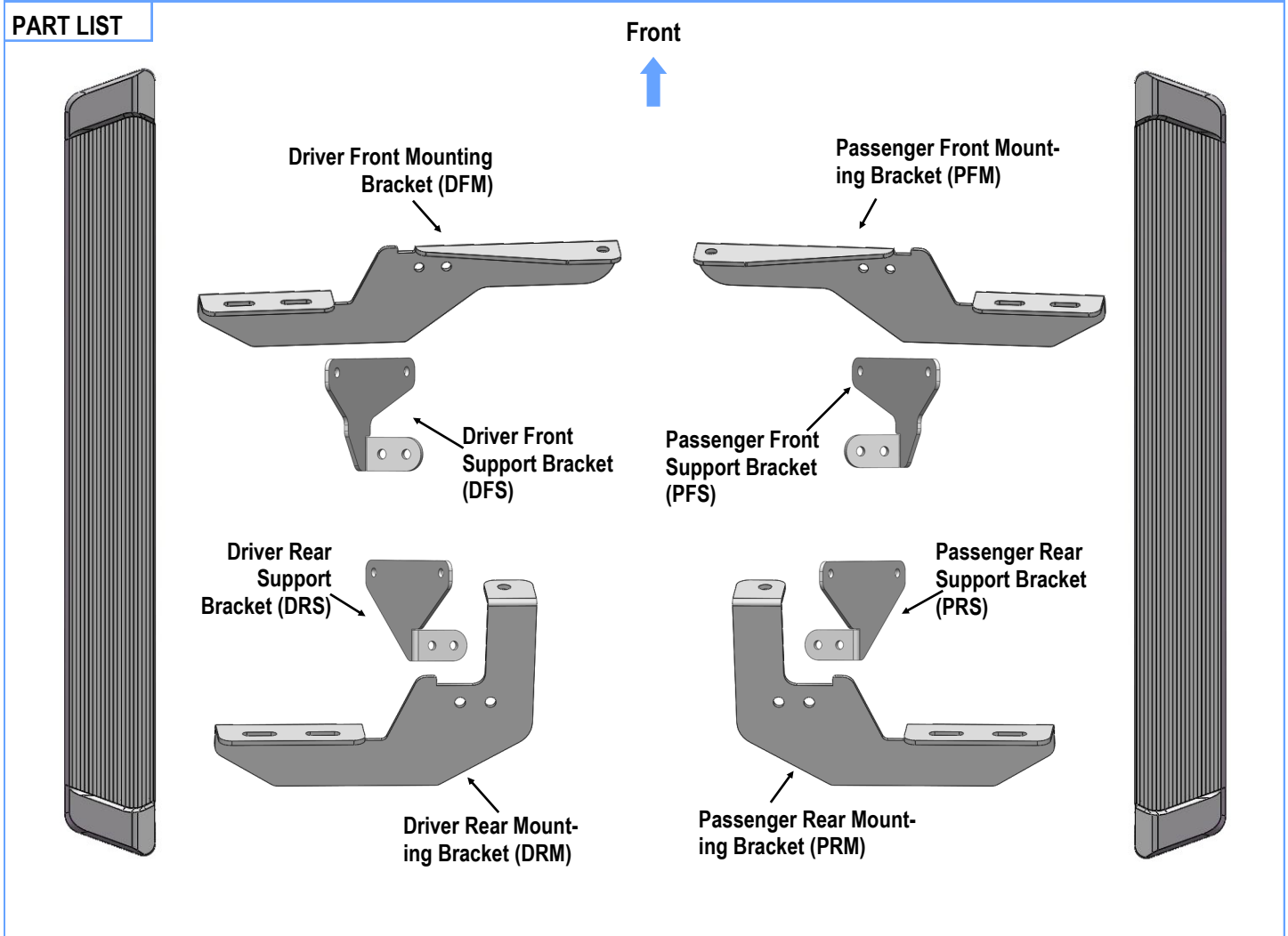
PART#: IB-R964

READ INSTRUCTIONS CAREFULLY BEFORE STARTING INSTALLATION. REMOVE CONTENTS FROM BOX AND VERIFY ALL PARTS ARE PRESENT. ASSISTANCE IS RECOMMENDED.

*ROCKER PANEL MOUNT
*DRILLING MAY BE REQUIRED ON SOME MODELS

Fastener Size	Tightening Torque (ft-lbs)	Required
6mm	6-7	√
8mm	16-18	√
10mm	31-32	√
12mm	56-58	X
14mm	92-94	X

PART LIST



Customer Support: info@iboardauto.com

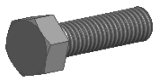


Hardware Package A (For Bracket Installation)

Item	QTY	Description	Item	QTY	Description
1#	2	M10X1.5 J-Bolts	6#	16	M8X1.25-20mm Hex Bolts
2#	2	M10X1.5-35mm Hex Bolts	7#	32	M8 Flat Washers
3#	4	M10 Large Flat Washers	8#	16	M8 Lock Washers
4#	4	M10 Lock Washers	9#	16	M8X1.25 Hex Nuts
5#	2	M10X1.5 Hex Nuts			



1 #



2 #



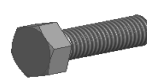
3 #



4 #



5 #



6 #



7 #



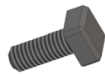
8 #



9 #

Hardware Package B (For Step Bar Installation)

Item	QTY	Description	Item	QTY	Description
1#	8	M6X1-20mm Square Head Bolts	3#	8	M6 Nylon Lock Nuts
2#	8	M6 Large Flat Washers			



1#



2#

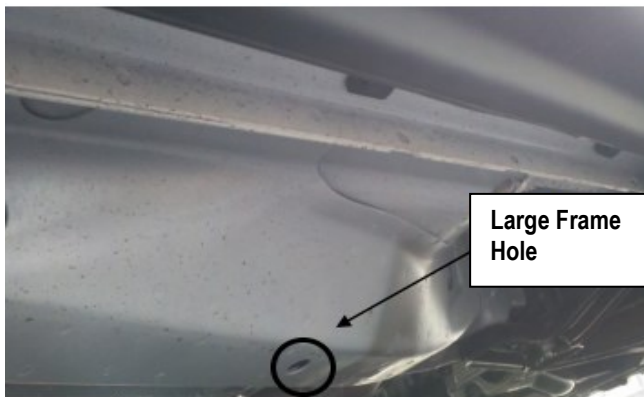


3#

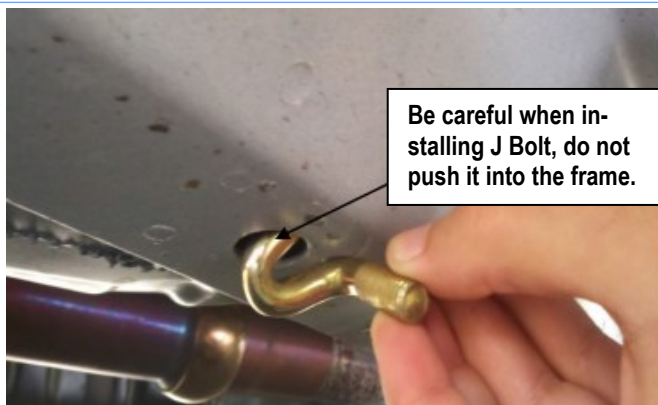


STEP 1

Start installation from the driver side front of the vehicle. Install M10 J-Bolt in the large hole on the frame on driver side front mounting location, (Figs 1 & 2).



(Fig 1) Driver Side Front Mounting Location

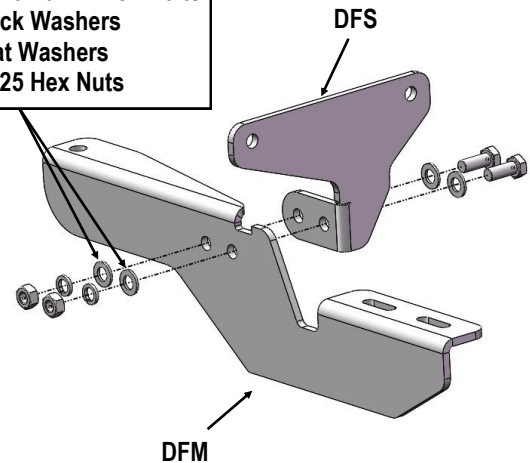


(Fig 2) Install M10 J-Bolt
(On Driver Side Front Mounting Location)

STEP 2

Assemble Driver Front Mounting Bracket (DFM) and Driver Front Support Bracket (DFS) with (2) M8X1.25-20mm Hex Bolts, (4) M8 Flat Washers, (2) M8 Lock Washers and (2) M8X1.25 Hex Nuts, (Fig 3). Do not fully tighten at this time.

- (2) M8X1.25-20mm Hex Bolts
- (2) M8 Lock Washers
- (4) M8 Flat Washers
- (2) M8X1.25 Hex Nuts

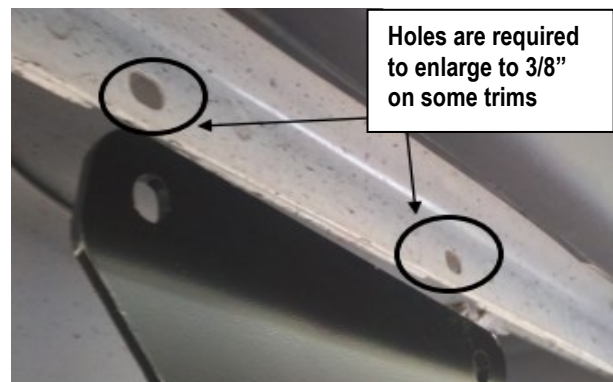


(Fig 3) Driver Front Brackets Assembly

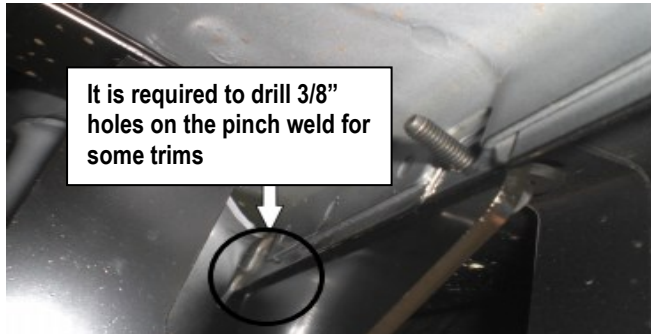
STEP 3

Drill (2) 3/8" holes on the pinch weld, according to the support bracket position, (Fig 5).

Note: Holes are required to enlarge to 3/8" on some trims, (Fig 4).



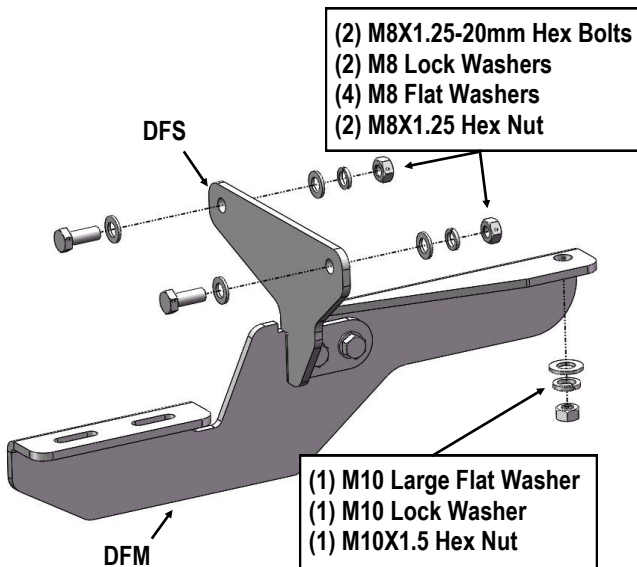
(Fig 4) Enlarge holes to 3/8"



(Fig 5) Drill Holes on Pinch Weld

STEP 4

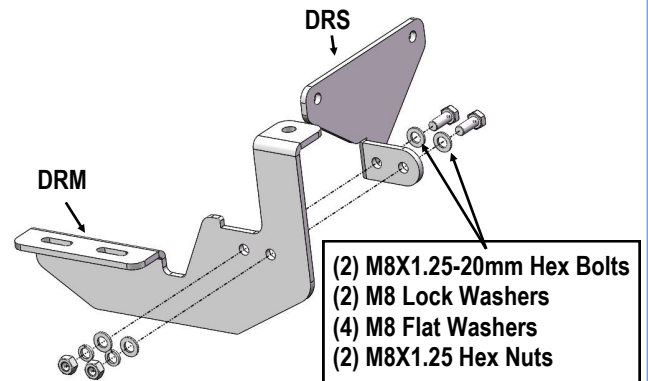
Attach the Driver Front Mounting Bracket (DFM) to the installed M10 J-Bolt using (1) M10 Large Flat Washer, (1) M10 Lock Washer and (1) M10X1.5 Hex Nut. Attach the Driver Front Support Bracket (DFS) to the outside of the pinch weld, and secure the bracket to the drilled holes using (2) M8X1.25-20mm Hex Bolts, (4) M8 Flat Washers, (2) M8 Lock Washers and (2) M8X1.25 Hex Nuts, (Fig 6). Do not fully tighten at this time.



(Fig 6) Driver Front Mounting Bracket Installation

STEP 5

Move along the side panel to the driver side rear mounting location, (Fig 3). Repeat step 2 for Driver Rear Mounting Bracket (DRS) and Driver Rear Support Bracket (DRM) assembly, (Fig 7).



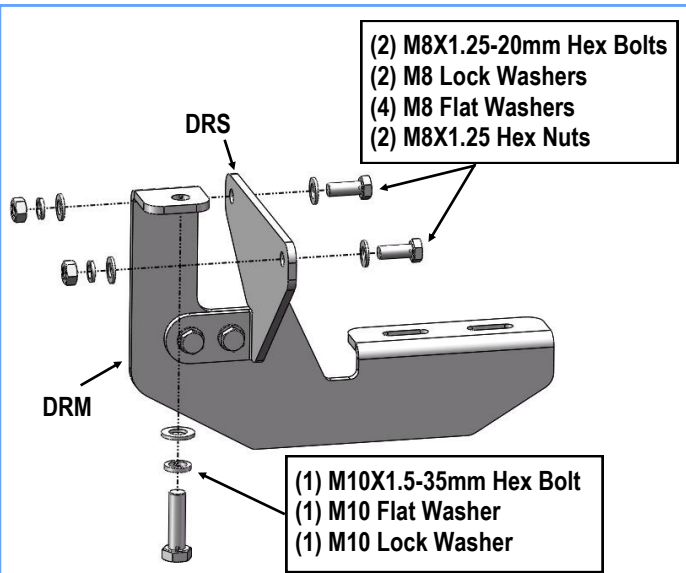
(Fig 7) Driver Rear Brackets Assembly

STEP 6

Remove the M10 fuel tank strap bolt and install the Driver Rear Mounting Bracket (DRM) with (1) M10X1.5-35mm Hex Bolt, (1) M10 Large Flat Washer and (1) M10 Lock Washer, (Fig 8). Secure the Driver Rear Support Bracket (DRS) to the outside of the pinch weld by using (2) M8X1.25-20mm Hex Bolts, (4) M8 Flat Washers, (2) M8 Lock Washers and (2) M8X1.25 Hex Nuts, (Fig 9). Do not fully tighten at this time.



(Fig 8) Driver Rear Mounting Bracket Installed



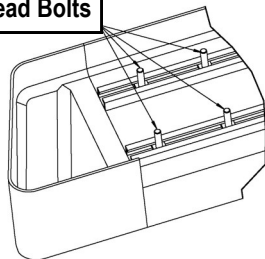
(Fig 9) Driver Rear Brackets Installation

STEP 7

Once all (2) mounting brackets are installed. Select a Running Board. Slip (2) M6X1-20mm Square Head Bolts into each bottom channel (Fig 10). Carefully position the Running Board onto the (2) Mounting Brackets. Attach the Running Board to each Mounting Bracket with (2) M6X1-20mm Square Head Bolts, (2) M6 Large Flat Washers and (2) M6 X1 Nylon Lock Nuts (Fig 11). Do not fully tighten at this time.

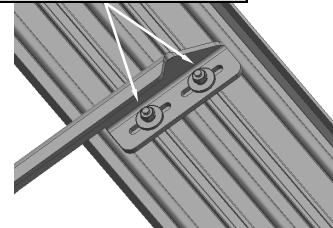
IMPORTANT: Do not slide the Running Board on the Brackets or the bottom surface of the board will be damaged.

M6X1-20mm Square Head Bolts



(Fig 10) Slip M6X1-20mm Square Head Bolts Into The Bottom Channels

(2) M6X1-20mm Square Head Bolts
(2) M6 Large Flat Washers
(2) M6X1 Nylon Lock Nuts



(Fig 11) Running Board Installed Onto Mounting Bracket

STEP 8

Level and adjust the Running Board and fully tighten all hardware.

Important: Please follow the recommended Tightening Torques shown in the table on page 1. Don't over tighten, or the nuts/bolts will be damaged.

STEP 9

Repeat **Steps 1-8** for the other side Running Board installation. The installation is completed .

Attention

Do periodic inspections to the installation to make sure that all hardware is secure and tight.

In order to protect your bars/boards, please use mild soap/non-abrasive products for cleaning only.