



**PART#: IB-P115Y&H**

## iBoard® Series

READ INSTRUCTIONS CAREFULLY BEFORE START ING  
INSTALLATION. REMOVE CONTENTS FROM BOX AND  
VERIFY ALL PARTS ARE PRESENT. ASSISTANCE IS  
RECOMMENDED.

\*ROCKER PANEL MOUNT  
\*NO DRILLING REQUIRED

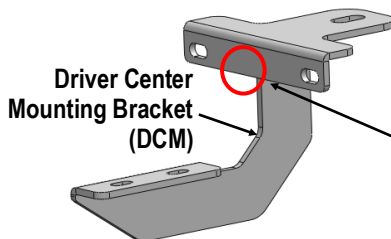
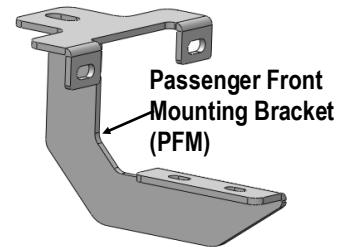
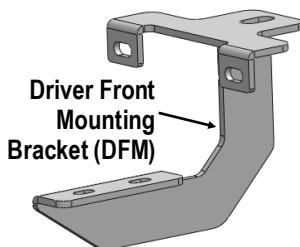
Fastener Size	Tightening Torque (ft-lbs)	Required
6mm	6-7	√
8mm	16-18	√
10mm	31-32	X
12mm	56-58	X
14mm	92-94	X

### PART LIST

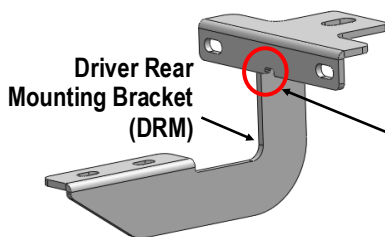
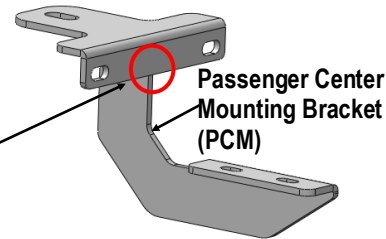
#### Driver Side Step Bar

Front  
↑

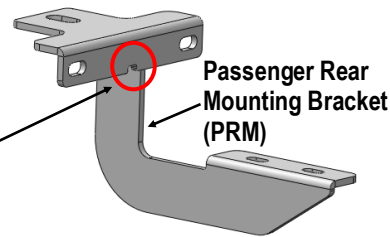
#### Passenger Side Step Bar



Center Mounting  
Brackets W/O Notch



Rear Mounting  
Brackets W/ Notch

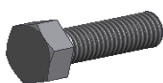




Scan for  
Installation Video

### Hardware Package A (For Bracket Installation)

Item	QTY	Description	Item	QTY	Description
1#	6	M8X1.25-35 Hex Bolts	4#	12	M6X1-25 Hex Bolts
2#	6	M8 Large Flat Washers	5#	24	M6 Large Flat Washers
3#	6	M8 Lock Washers	6#	12	M6X1 Nylon Lock Nuts



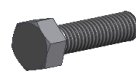
1 #



2 #



3 #



4 #



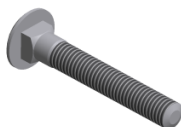
5 #



6 #

### Hardware Package B (For Step Bar Installation)

Item	QTY	Description	Item	QTY	Description
1#	12	M8X1.25-35mm Carriage Bolts	3#	12	M8 Nylon Lock Nuts
2#	12	M8 Large Flat Washers	4#	6	Sliders (Packed with Mounting Brackets)



1 #



2 #



3 #

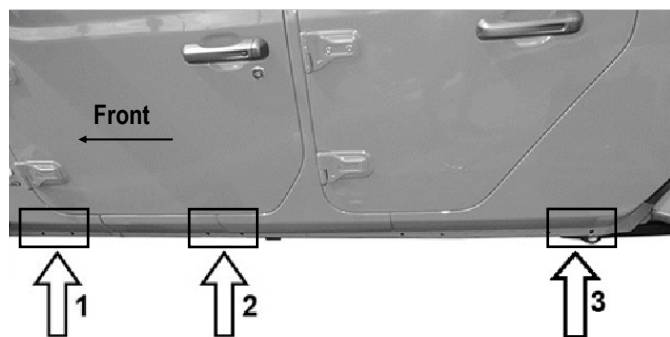


4 #



## STEP 1

Start the installation under the driver side of the vehicle. Locate (3) mounting points on the vehicle, **(Fig 1)**. Find the threaded insert located in between the first pair of holes along the pinch weld, **(Fig 2)**.



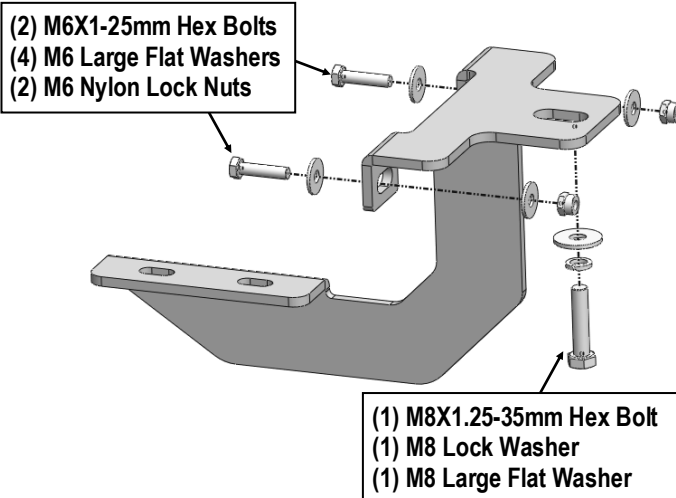
**(Fig 1) Driver Side (3) Mounting Locations**

## STEP 2

Start installing from the driver side front of the vehicle, **(Fig 2)**. Attach the Driver Front Mounting Bracket to the vehicle with: (1) M8X1.25-35mm Hex Bolt, (1) M8 Lock Washer, (1) M8 Large Flat Washer, (2) M6X1-25mm Hex Bolts, (4) M6 Large Flat Washers and (2) M6 Nylon Lock Nuts, **(Fig 3)**. Don't fully tighten the hardware at this time.



**(Fig 2) Driver Side Front Mounting Location**



**(Fig 3) Driver Front Mounting Bracket Installation**

## STEP 3

Move to driver side Center & Rear Mounting Locations, **(Fig 1)**. Repeat **Step 2** to install Center & Rear brackets. Don't fully tighten the hardware at this time.

## STEP 4

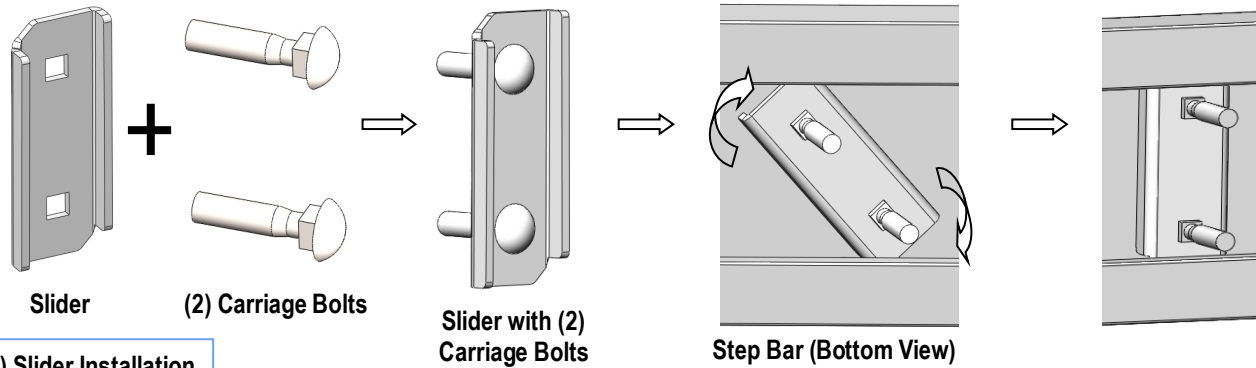
Once all (3) Driver side mounting brackets are installed, then proceed to the Step Bar installation. **(Figs 4 & 5)**

- (1) Select (1) Slider and (2) M8X1.25-35mm Carriage Bolts;
- (2) Install (2) M8X1.25-35mm Carriage Bolts in (1) Slider.
- (3) Slide the Slider (with carriage bolts) to the **Step Bar**.
- (4) Repeat to install the other (2) sliders to the step bar.
- (5) Attach the Step Bar (with the Sliders) onto the installed mounting brackets. Position the Sliders to the installed brackets. Secure the Step Bar to the installed Brackets by using (6) M8 Large Flat Washers and (6) M8 Nylon Lock Nuts and (3) Sliders, **(Fig 5)**. Do not fully tighten hardware at this time.

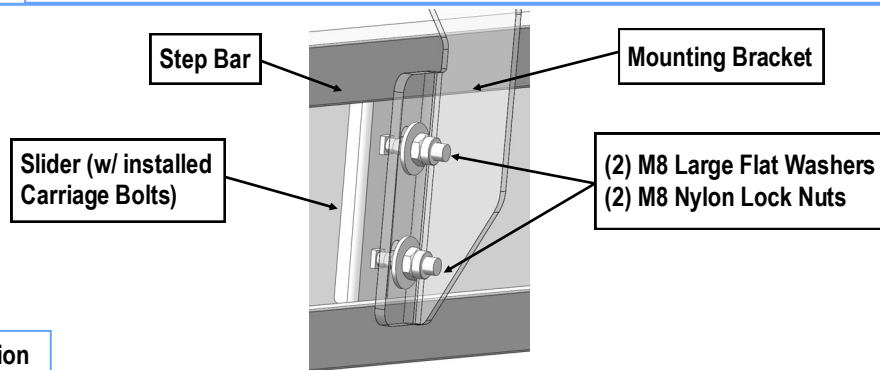
**Note:** The Sliders are packed with the Mounting Brackets. Level and adjust the Step Bar and fully tighten all hardware. Repeat **Steps 1-4** for the other side Step Bar installation. **The installation is completed!!!**



Scan for  
Installation Video



(Fig 4) Slider Installation



(Fig 5) Step Bar Installation