

iBoard®

iBoard® by APS

PART#: IB-093A-B

READ INSTRUCTIONS CAREFULLY BEFORE STARTING INSTALLATION. REMOVE CONTENTS FROM BOX AND VERIFY ALL PARTS ARE PRESENT. ASSISTANCE IS RECOMMENDED.

*BODY FRAME MOUNT
*NO DRILLING REQUIRED

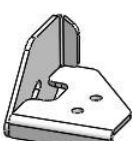
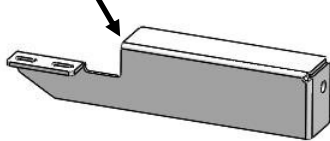
Fastener Size	Tightening Torque (ft-lbs)
6mm	6-7
8mm	16-18
10mm	31-32
12mm	56-58
14mm	92-94

PART LIST

Front
↑

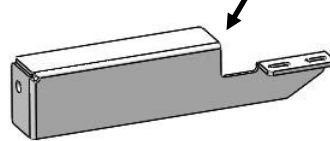


Driver Front Mounting Bracket (DFM)



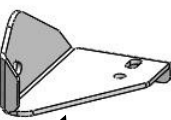
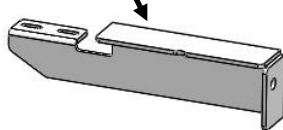
Driver Front Support Bracket (DFS)

Passenger Front Mounting Bracket (PFM)



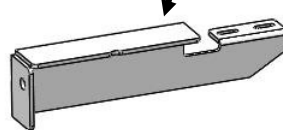
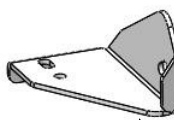
Passenger Front Support Bracket (PFS)

Driver Rear Mounting Bracket (DRM)



Driver Rear Support Bracket (DRS)

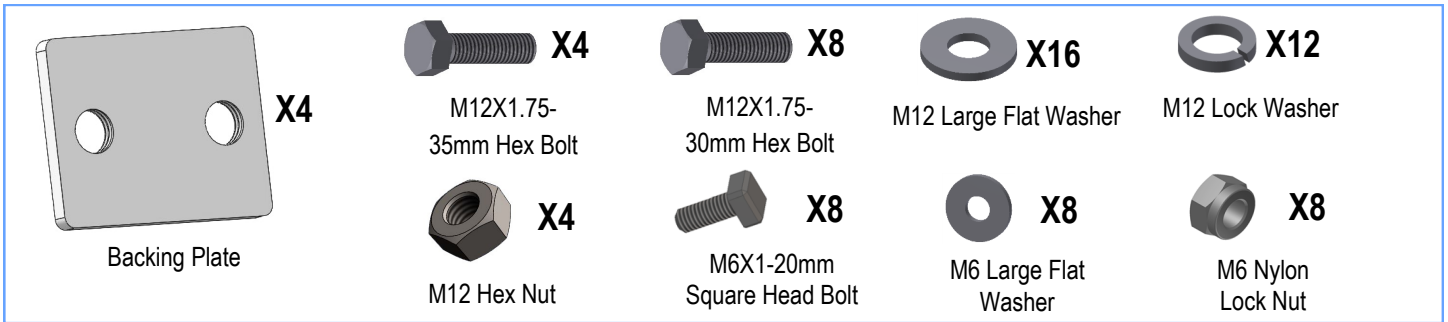
Passenger Rear Mounting Bracket (PRM)



Passenger Rear Support Bracket (PRS)

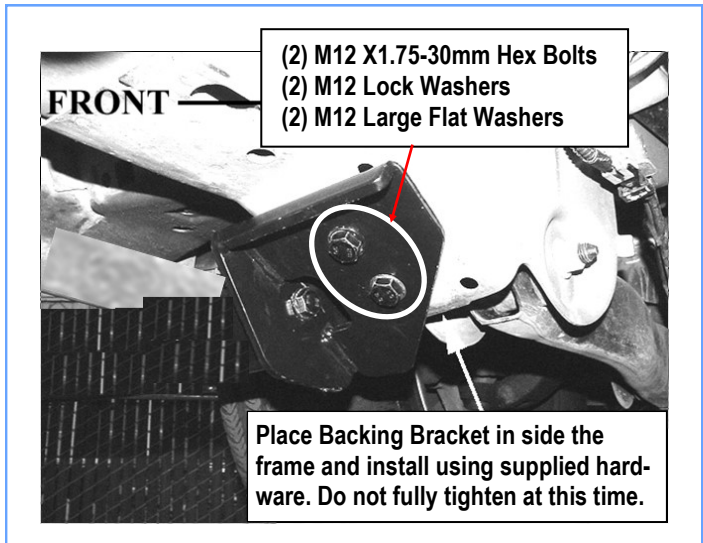
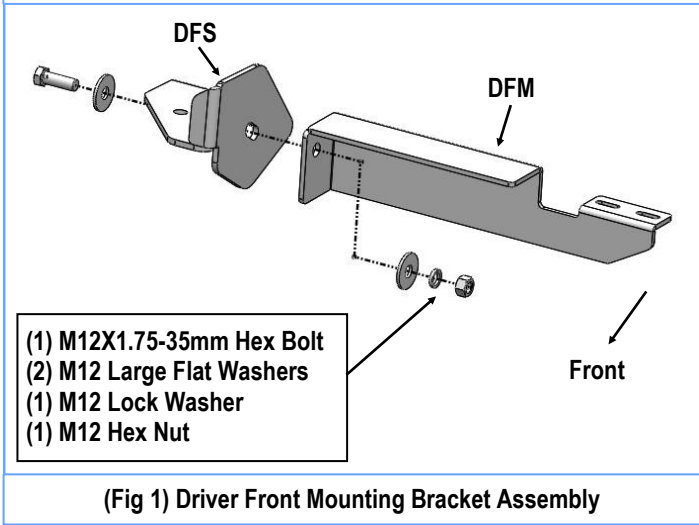
Customer Support: info@iboardauto.com

iBoard®



STEP 1

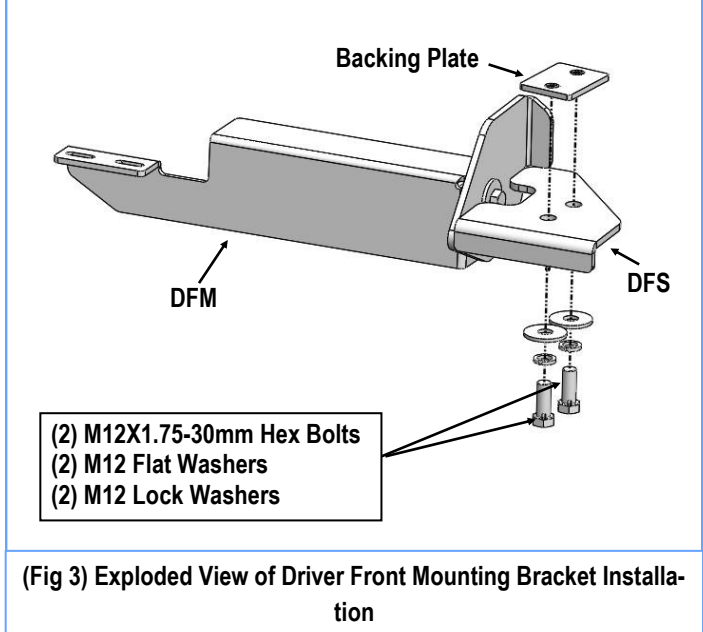
Start installation from the driver side front of the vehicle. Assemble the Driver Front Mounting Bracket (DFM) and Driver Front Support Bracket (DFS), with (1) M12x1.75-35mm Hex Bolt, (2) M12 Large Flat Washers, (1) M12 Lock Washer and (1) M12 Hex Nut, (Fig 1). Do not tighten hardware at this time.



(Fig 2) Assembled Driver Front Mounting Bracket Installed

STEP 2

Select (1) Backing Plate and place it behind the body frame, line up the holes, clamp (1) Driver Front Mounting Bracket (DFM) on the other side using (2) M12X1.75-30mm Hex Bolts (2) M12 Lock Washers and (2) M12 Large Flat Washers to the front body mounting position. Do not fully tighten hardware at this time. (Fig 2-3).

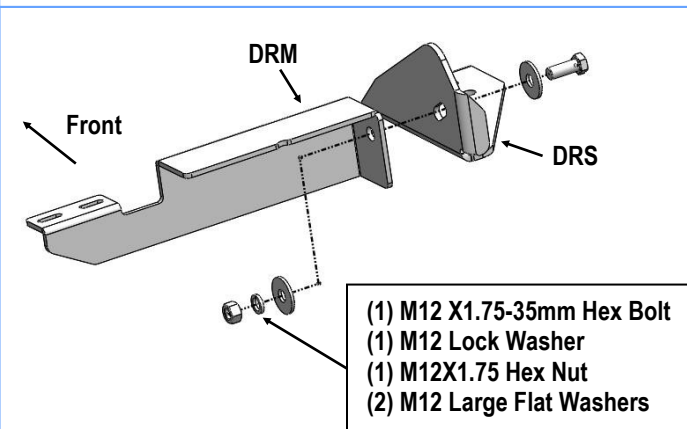


(Fig 3) Exploded View of Driver Front Mounting Bracket Installation

iBoard®

STEP 3

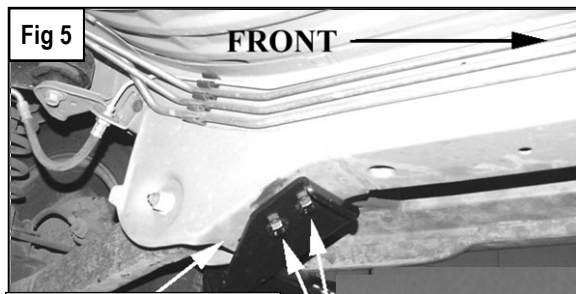
Move toward the rear of the vehicle. Assemble the Driver Rear Mounting Bracket (DRM) and Driver Rear Support Bracket (DRS) with (1) M12x1.75-35mm Hex Bolt, (2) M12 Large Flat Washers, (1) M12 Lock Washer and (1) M12 Hex Nut, (Fig 4). Do not tighten hardware at this time.



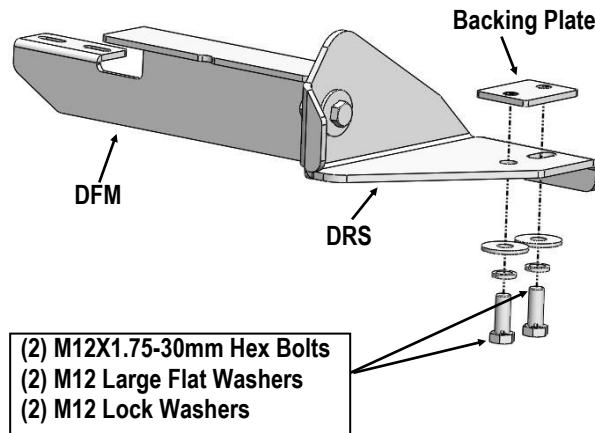
(Fig 4) Driver Rear Mounting Bracket Assembly

STEP 4

Repeat **Step 2** to install the Assembled Driver Rear Mounting Bracket. Do not fully tighten hardware at this time (Fig 5-6).



(2) M12X1.75-30mm Hex Bolts
(2) M12 Large Flat Washers
(2) M12 Lock Washers



(Fig 6) Exploded View of Driver Rear Mounting Bracket Installation

STEP 5

Select a Running Board. Slip (2) M6X1-20mm Square Head Bolts into each bottom channel, (Fig 7). Carefully position the Running Board onto the (2) Mounting Brackets.

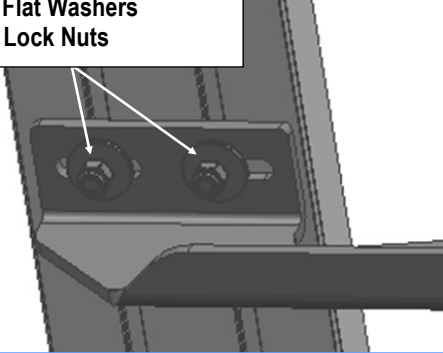
IMPORTANT: Do not slide the Running Board on the Brackets or the bottom surface of the board will be damaged. Attach the Running Board to each Mounting Bracket with (2) M6x1-20mm Square Head Bolts, (2) M6 Large Flat Washers and (2) M6 Nylon Lock Nuts, (Fig 8). Do not fully tighten at this time.



(Fig 7) Slip M6X1-20mm Square Head Bolts Into The Bottom Channels

iBoard®

- (2) M6X1-20mm Square Head Bolts
- (2) M6 Large Flat Washers
- (2) M6 Nylon Lock Nuts



(Fig 8) Running Board Installed Onto the Mounting Bracket

STEP 6

Level and adjust the Running Board and fully tighten all hardware.

STEP 7

Repeat **Steps 1-6** for other side Running Board installation.
The installation is completed.

Attention

Do periodic inspections to the installation to make sure that all hardware is secure and tight.

In order to protect your bars/boards, please use only mild soap/non-abrasive products for cleaning.