

iBoard®



Scan for
Installation Video

iBoard® by APS

PART#: IB-093C&H

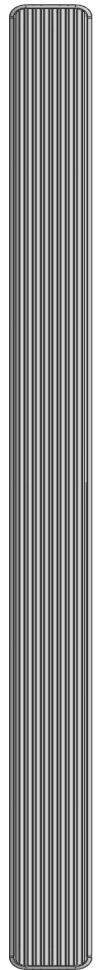
READ INSTRUCTIONS CAREFULLY BEFORE STARTING INSTALLATION. REMOVE CONTENTS FROM BOX AND VERIFY ALL PARTS ARE PRESENT. ASSISTANCE IS RECOMMENDED.

*ROCKER PANEL MOUNT
*NO DRILLING REQUIRED

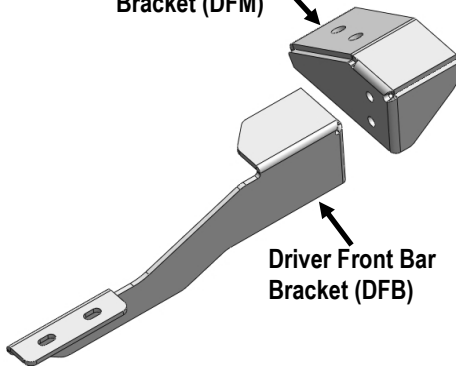
Fastener Size	Tightening Torque (ft-lbs)	Required
6mm	6-7	X
8mm	16-18	√
10mm	31-32	√
12mm	56-58	√
14mm	92-94	X

PART LIST

Driver Side Step Bar

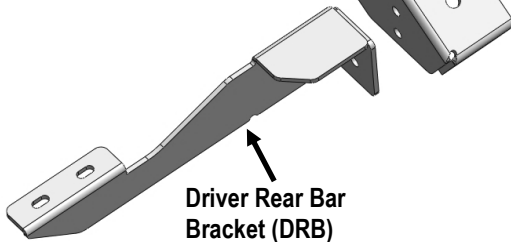


Driver Front Mounting Bracket (DFM)



Driver Front Bar Bracket (DFB)

Driver Rear Mounting Bracket (DRM)

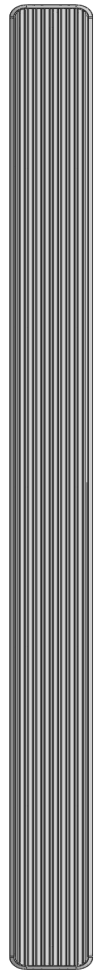


Driver Rear Bar Bracket (DRB)

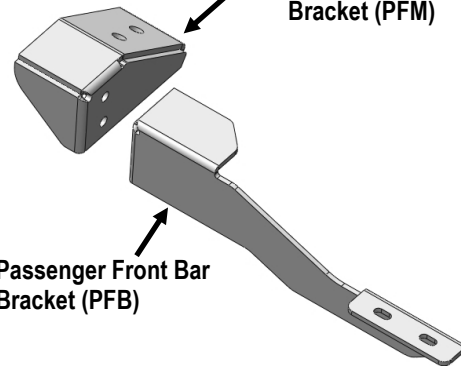
Front



Passenger Side Step Bar

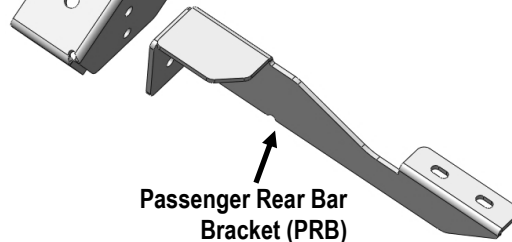


Passenger Front Mounting Bracket (PFM)



Passenger Front Bar Bracket (PFB)

Passenger Rear Mounting Bracket (PRM)



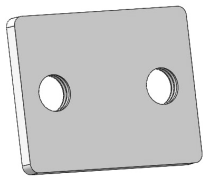
Passenger Rear Bar Bracket (PRB)

Customer Support: info@iboardauto.com



Hardware Package A (For Bracket Installation)

Item	QTY	Description	Item	QTY	Description
1#	4	Backing Plates	5#	8	M10X1.5-30 Hex Bolts
2#	8	M12X1.75-30mm Hex Bolts	6#	16	M10 Large Flat Washers
3#	8	M12 Large Flat Washers	7#	8	M10 Lock Washers
4#	8	M12 Lock Washers	8#	8	M10 Hex Nuts



1#



2#



3#



4#



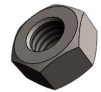
5#



6#



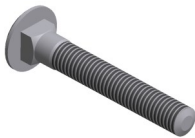
7#



8#

Hardware Package B (For Stainless Steel Step Bar Installation)

Item	QTY	Description	Item	QTY	Description
1#	8	M8X1.25-35mm Carriage Bolts	3#	8	M8 Nylon Lock Nuts
2#	8	M8 Large Flat Washers	4#	4	Sliders (Packed with Step Bars)



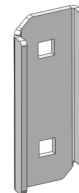
1#



2#



3#

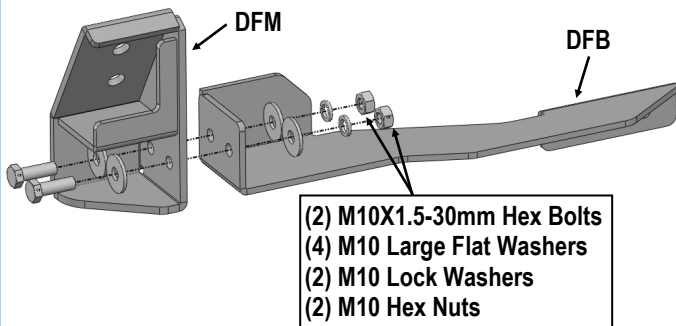


4#



STEP 1

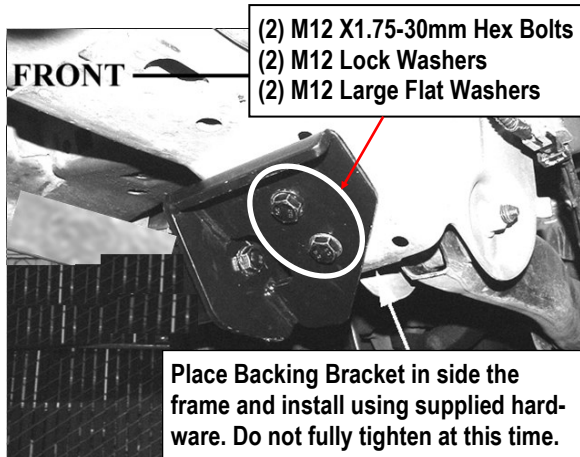
Start installation from the driver side front of the vehicle. Assemble the Driver Front Mounting Bracket (DFM) and Driver Front Bar Bracket (DFB), with (2) M10X1.5-30mm Hex Bolts, (4) M10 Large Flat Washers, (2) M10 Lock Washers and (2) M10 Hex Nuts, (Fig 1). Do not tighten hardware at this time.



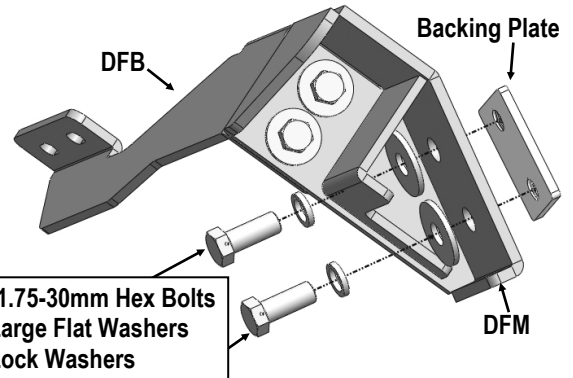
(Fig 1) Driver Front Mounting Bracket Assembly

STEP 2

Select (1) Backing Plate and place it behind the body frame, line up the holes, clamp (1) Driver Front Mounting Bracket (DFM) on the other side using (2) M12X1.75-30mm Hex Bolts (2) M12 Lock Washers and (2) M12 Large Flat Washers to the front body mounting position. Do not fully tighten hardware at this time. (Fig 2-3).



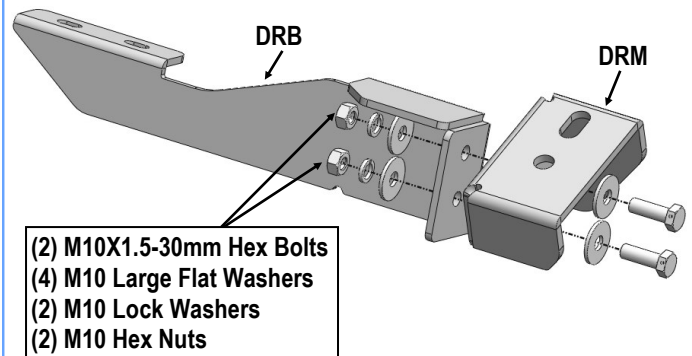
(Fig 2) Assembled Driver Front Mounting Bracket Installed



(Fig 3) Driver Front Mounting Bracket Installation

STEP 3

Move toward the rear of the vehicle. Assemble the Driver Rear Mounting Bracket (DRM) and Driver Rear Support Bracket (DRB) with ((2) M10X1.5-30mm Hex Bolts, (4) M10 Large Flat Washers, (2) M10 Lock Washers and (2) M10 Hex Nuts, (Fig 4). Do not tighten hardware at this time.



(Fig 4) Driver Rear Mounting Bracket Assembly

STEP 4

Repeat **Step 2** to install the Assembled Driver Rear Mounting Bracket. Do not fully tighten hardware at this time (Figs 5-6).

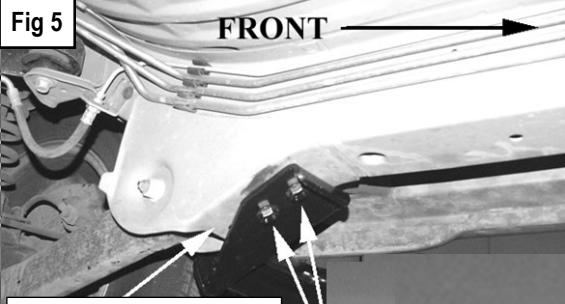
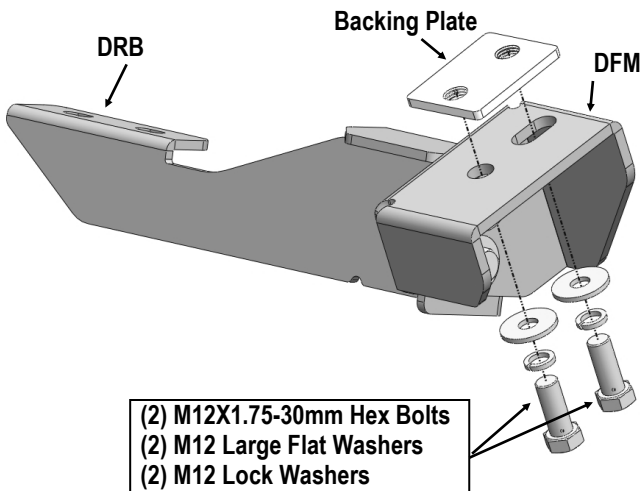


Fig 5

Place Backing Bracket inside frame mount. Attach bracket as shown with include hardware.

- (2) M12X1.75-30mm Hex Bolts
- (2) M12 Large Flat Washers
- (2) M12 Lock Washers



- (2) M12X1.75-30mm Hex Bolts
- (2) M12 Large Flat Washers
- (2) M12 Lock Washers

(Fig 6) Driver Rear Mounting Bracket Installation

STEP 5

Once all (2) Driver side mounting brackets are assembled, then proceed to the Step Bar installation. (Figs 7 & 8)

- (1) Select (1) Slider and (2) M8X1.25-35mm Carriage Bolts;
- (2) Install (2) M8X1.25-35mm Carriage Bolts in (1) Slider.
- (3) Slide the Slider (with carriage bolts) to the **Step Bar**.
- (4) Repeat to install the other (1) slider to the step bar.

(5) Attach the Step Bar (with the Sliders) onto the installed mounting brackets. Position the Sliders to the installed brackets. Secure the Step Bar to the installed Brackets by using (4) M8 Large Flat Washers and (4) M8 Nylon Lock Nuts and (2) Sliders, (Fig 8). Do not fully tighten hardware at this time.

Note: The Sliders are packed with the Step Bars.

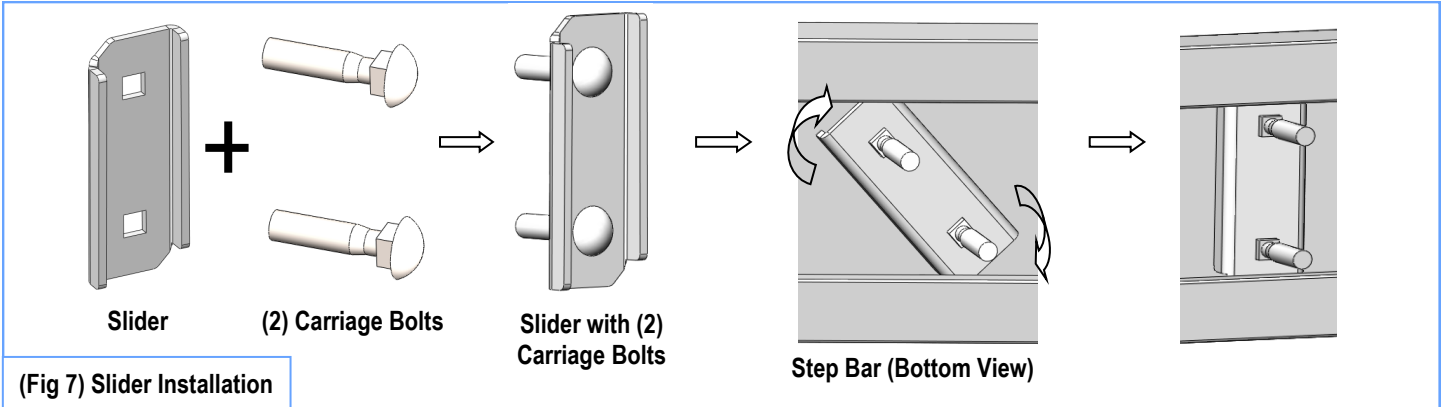
Level and adjust the Step Bar and fully tighten all hardware.

Repeat **Steps 1-5** for the other side Step Bar installation. **The installation is completed!!!**

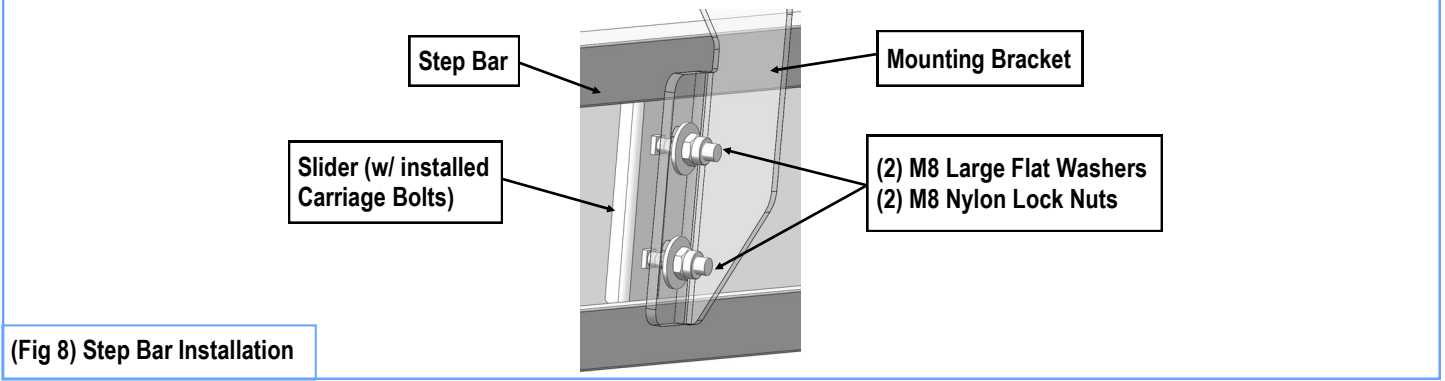
Attention

Do periodic inspections to the installation to make sure that all hardware is secure and tight.

In order to protect your bars/boards, please use mild soap/non-abrasive products for cleaning only.



(Fig 7) Slider Installation



(Fig 8) Step Bar Installation