

# iBoard®

## iBoard® by APS

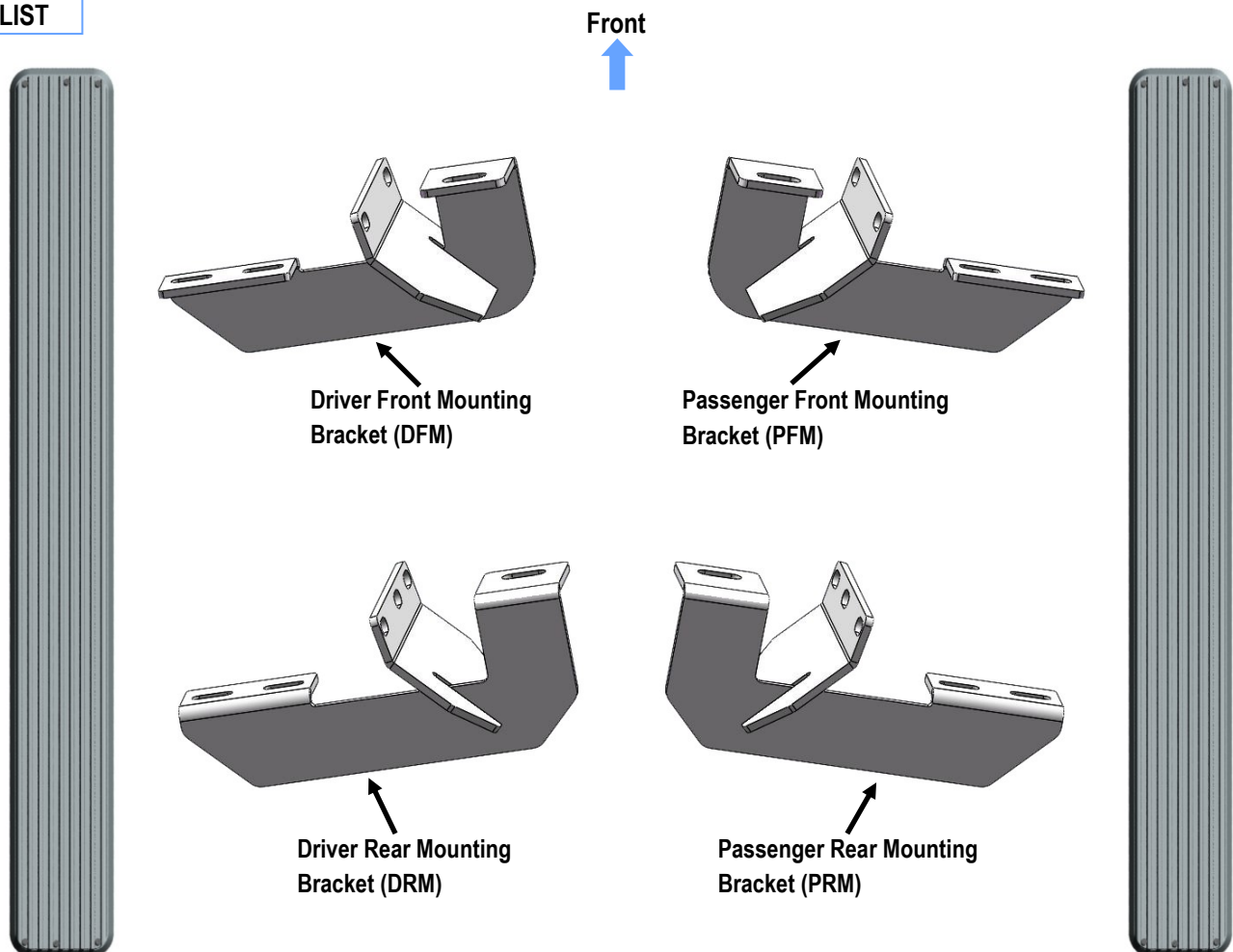
PART#: IB-106A-B

READ INSTRUCTIONS CAREFULLY BEFORE STARTING INSTALLATION. REMOVE CONTENTS FROM BOX AND VERIFY ALL PARTS ARE PRESENT. ASSISTANCE IS RECOMMENDED.

\*ROCKER PANEL MOUNT  
\*NO DRILLING REQUIRED

Fastener Size	Tightening Torque (ft-lbs)
6mm	6-7
8mm	16-18
10mm	31-32
12mm	56-58
14mm	92-94

### PART LIST

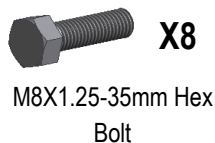


Customer Support: [info@iboardauto.com](mailto:info@iboardauto.com)

# iBoard®



X4



X8



X8



X8



X8



X8



X8



X16



X16

## STEP 1

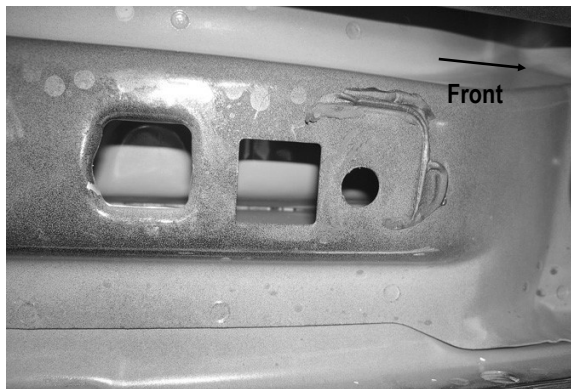
Start installation toward the front of the driver side of the vehicle. Determine if the vehicle has an open floor panel or a threaded hole in the floor panel for the top tab on the Bracket, (Figs 1 & 3).

### Vehicles open mounting location:

Insert (1) M8 Nut Plate into the large square opening in the floor panel. Line up the threaded nut with the small hole in line with the tab on the Bracket, (Figs 2A & 2B). Bolt the Bracket to the Nut Plate with (1) M8X1.25-35mm Hex Bolt, (1) M8 Lock Washer and (1) M8 Flat Washer. Do not fully tighten hardware at this time, (Fig 4).

### Vehicles with factory threaded hole in floor panel:

Bolt the tab on the Bracket to the threaded hole in the floor panel with (1) M8X1.25-35mm Hex Bolt, (1) M8 Lock Washer and (1) M8 Large Flat Washer, (Figs 3 & 4). Do not fully tighten hardware at this time.



(Fig 1) Passenger Side Front Mounting Location (Vehicles with open mounting location)

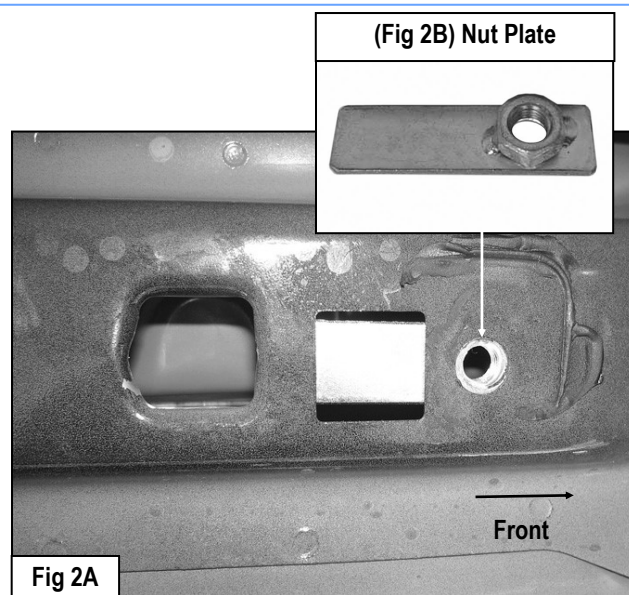
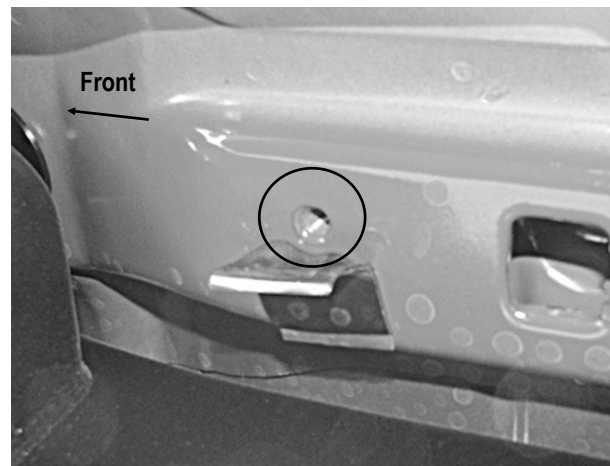


Fig 2A



(Fig 3) Passenger Side Front Mounting Location (Vehicles with factory threaded hole in floor panel)

# iBoard®

## STEP 3

Repeat **Steps 1-2** for Driver Rear Mounting Bracket (**DRM**) installation, (**Figs 3 & 6A & 6B**). **NOTE:** Determine correct rear Bracket installation procedure for your model year:

**A. 2007 - 8:** Use only the center hole on the Bracket and (1) M6X1-25mm Inner Hex Bolt, (1) M6 Flat Washer (outside) and (1) M6 Large Flat Washer, (inside against bracket), and (1) M6X1 Nylon Lock Nut to attach rear bracket to the back of the pinch weld, (**Figs 7 & 8**).

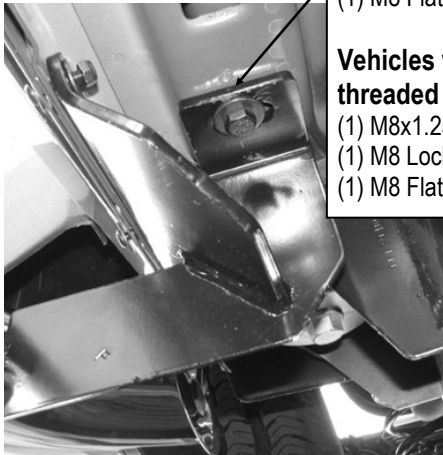
**B. 2008 - 12:** Requires (2) M6X1-25mm Inner Hex Bolts, (2) M8 Flat Washers, (outside), (2) M6 Large Flat Washers, (inside against the bracket) and (2) M6X1 Nylon Lock Nuts to attach rear bracket to back of pinch weld, (**Figs 7 & 9**).

### Vehicles with open mounting location:

- (1) M8x1.25-35mm Hex Bolt
- (1) M8 Lock Washer
- (1) M8 Flat Washer

### Vehicles with factory threaded hole in floor panel:

- (1) M8x1.25-35mm Hex Bolt
- (1) M8 Lock Washer
- (1) M8 Flat Washer

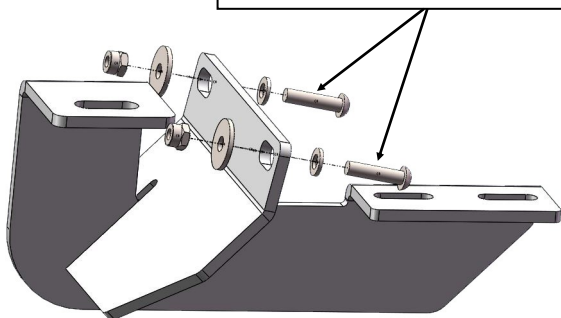


(Fig 4) Passenger Front Mounting Bracket Installation

## STEP 2

Line up the mounting plate on the Bracket with the (2) factory holes in the pinch weld. Bolt the Mounting Bracket to the back of the pinch weld using the included (2) M6X1-25mm Inner Hex Bolts, (2) M8 Flat Washers, (against pinch weld), (2) M6 Large Flat Washers, (inside against the bracket) and (2) M6X1 Nylon Lock Nuts, (**Fig 5**). Do not fully tighten hardware at this time.

- (2) M6X1-25mm Inner Hex Bolts
- (2) M8 Flat Washers (against pinch weld)
- (2) M6 Large Flat Washers (inside against the bracket)
- (2) M6X1 Nylon Lock Nuts



(Fig 5) Passenger Front Mounting Bracket Installation

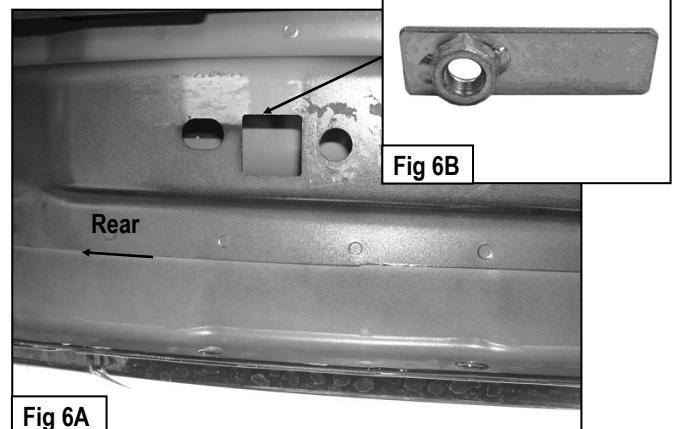


Fig 6A

Fig 6B

2007 model uses (1) 6mm Allen Bolt in center hole

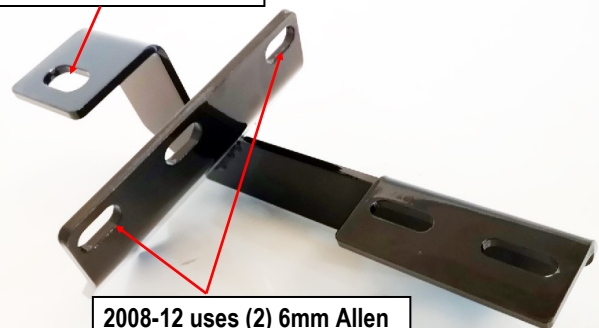


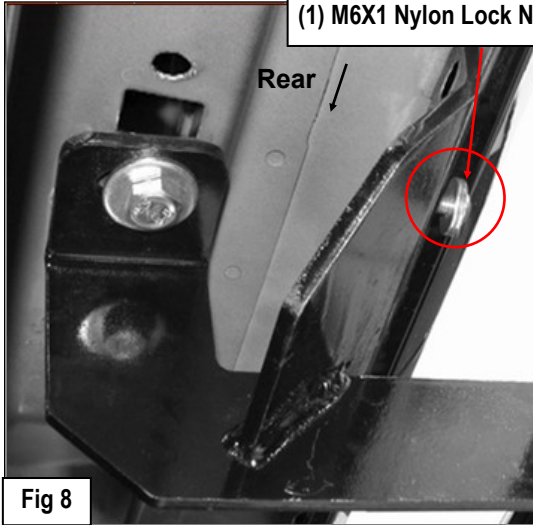
Fig 7

2008-12 uses (2) 6mm Allen Bolts in outside holes

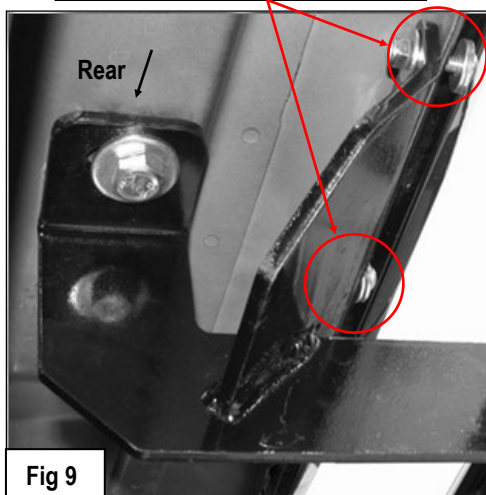
# iBoard®

## STEP 4

2007 model uses:  
(1) M6X1-25mm Inner Hex Bolt  
(1) M8 Flat Washers (outside)  
(1) M6 Large Flat Washer  
(inside against the bracket)  
(1) M6X1 Nylon Lock Nut



2008-12 uses:  
(2) M6X1-25mm Inner Hex Bolts  
(2) M8 Flat Washers (outside)  
(2) M6 Large Flat Washers (inside  
against the bracket)  
(2) M6X1 Nylon Lock Nuts

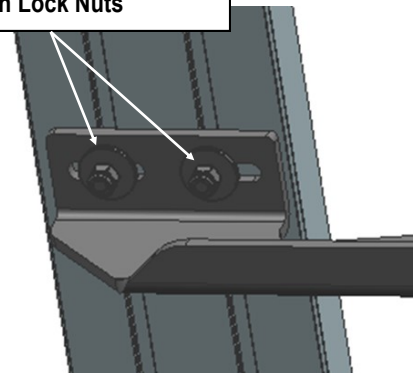


Select a Running Board. Slip (2) M6x1-20mm Square Head Bolts into each bottom channel (**Fig 10**). Carefully position the Running Board onto the (2) Mounting Brackets.

**IMPORTANT:** Do not slide the Running Board on the Brackets or the bottom surface of the board will be damaged. Attach the Running Board to Mounting Bracket with (4) M6x1-20mm Square Head Bolts, (4) M6 Large Flat Washers and (4) M6 X1 Nylon Lock Nuts (**Fig 11**). Do not fully tighten hardware at this time.



(2) M6X1-20mm Square Head Bolts  
(2) M6 Large Flat Washers  
(2) M6X1 Nylon Lock Nuts



# iBoard®

## STEP 5

Level and adjust the Running Board and fully tighten all hardware.

## STEP 6

Repeat **Steps 1-5** for the other side Running Board installation. The installation is completed.

### Attention

Do periodic inspections to the installation to make sure that all hardware is secure and tight.

In order to protect your bars/boards, please use only mild soap/non-abrasive products for cleaning.