



**PART#: IB-P352Y&H**

## iBoard® Series

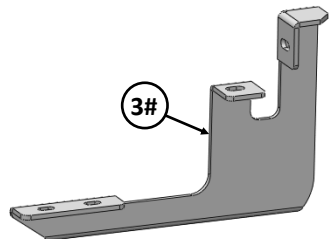
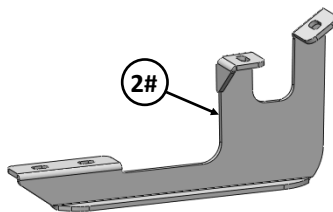
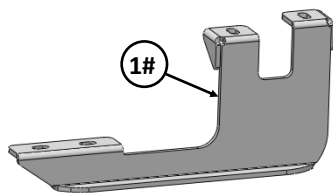
READ INSTRUCTIONS CAREFULLY BEFORE STARTING INSTALLATION. REMOVE CONTENTS FROM BOX AND VERIFY ALL PARTS ARE PRESENT. ASSISTANCE IS RECOMMENDED.

\*ROCKER PANEL MOUNT  
\*NO DRILLING REQUIRED

Fastener Size	Tightening Torque (ft-lbs)	Required
6mm	6-7	X
8mm	16-18	√
10mm	31-32	X
12mm	56-58	X
14mm	92-94	X

### PART LIST

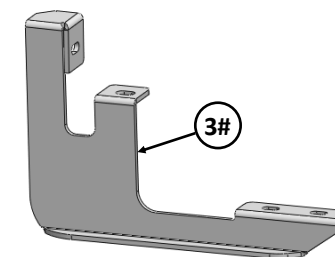
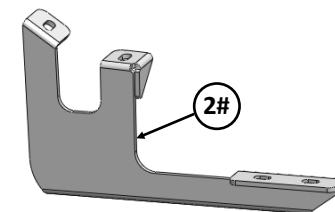
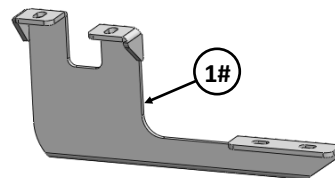
#### Driver Side Step Bar



Front



#### Passenger Side Step Bar





Scan for  
Installation Video

### Hardware Package A (For Bracket Installation)

Item	QTY	Description	Item	QTY	Description
1#	2	Driver / Passenger Front Mounting Brackets	4#	12	M8X1.25-25mm Hex Bolts
2#	2	Driver / Passenger Center Mounting Brackets	5#	12	M8 Large Flat Washers
3#	2	Driver / Passenger Rear Mounting Brackets	6#	12	M8 Lock Washers



4 #



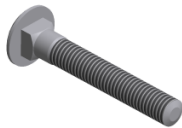
5 #



6 #

### Hardware Package B (For Step Bar Installation)

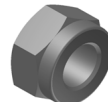
Item	QTY	Description	Item	QTY	Description
1#	12	M8X1.25-35mm Carriage Bolts	3#	12	M8 Nylon Lock Nuts
2#	12	M8 Large Flat Washers	4#	6	Sliders (Packed with Mounting Brackets)



1 #



2 #



3 #



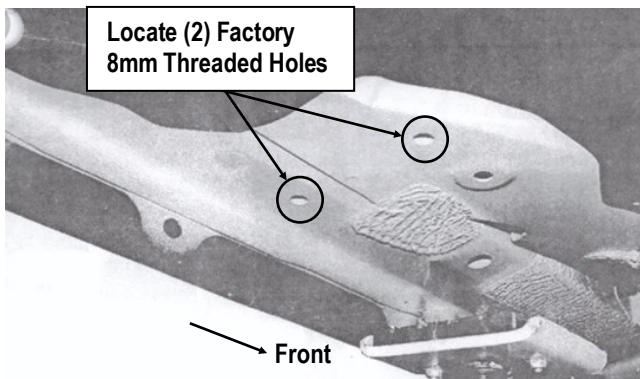
4 #



## STEP 1

Starting on the driver side front of the vehicle, locate the (2) factory 8mm threaded holes located in the bottom of the floor panel, (Fig 1).

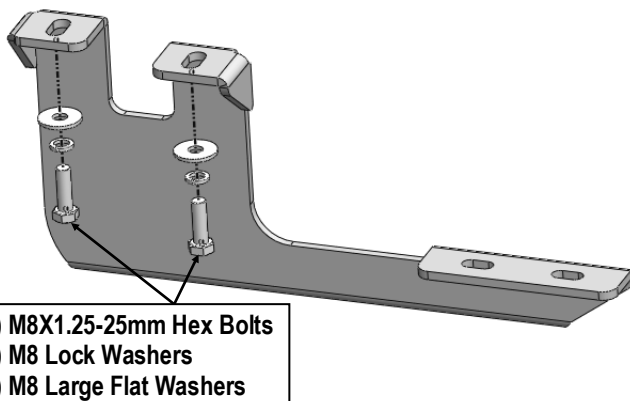
**NOTE:** The mounting threaded holes on body panel may be covered with insulation. Clean mounting locations as required for proper Bracket installation.



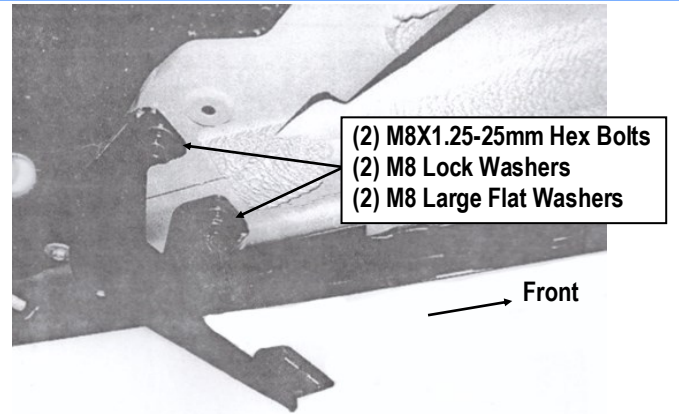
(Fig 1) Driver Side Front Mounting Location

## STEP 2

Select (1) Driver Front Mounting Bracket. Attach the Bracket to the (2) threaded holes with (2) M8X1.25-25mm Hex Bolts, (2) M8 Large Flat Washers and (2) M8 Lock Washers, (Figs 2 & 3). Do not fully tighten hardware at this time.



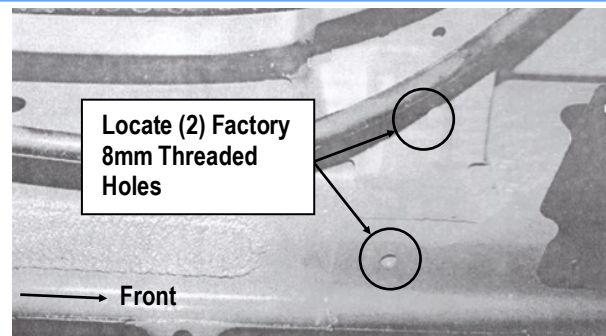
(Fig 2) Driver Front Mounting Bracket Installation



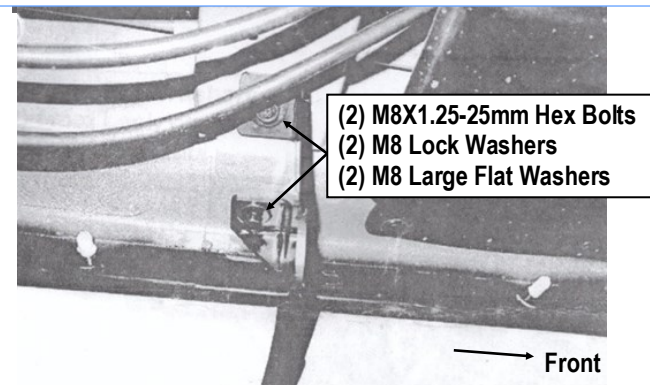
(Fig 3) Driver Front Mounting Bracket Installation

## STEP 3

Move to Driver side center mounting location, (Fig 4). Repeat **Step 2** to bolt the Driver Center Mounting Bracket to the factory threaded holes, (Fig 5). Do not fully tighten hardware at this time.



(Fig 4) Driver Side Center Mounting Location



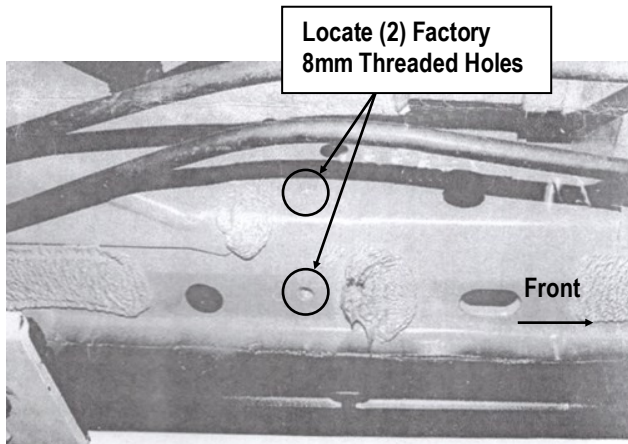
(Fig 5) Driver Center Mounting Bracket Installation



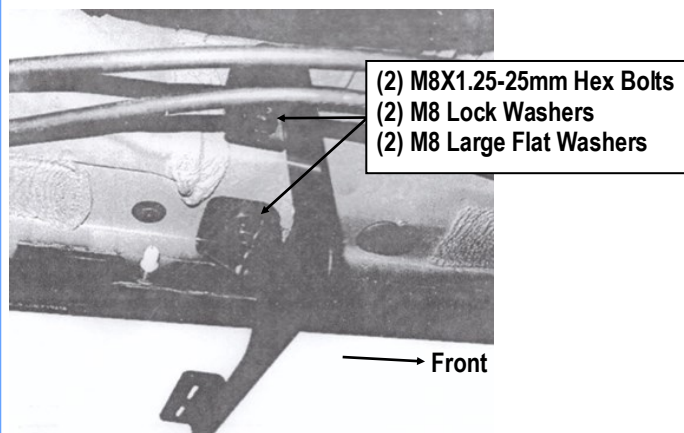
Scan for  
Installation Video

## STEP 4

Next, move to Driver side rear mounting location, **(Fig 6)**. Repeat **Step 2** to bolt the Driver Rear Mounting Bracket to the factory threaded holes, **(Fig 7)**. Do not fully tighten hardware at this time.



**(Fig 6) Driver Side Rear Mounting Location**



**(Fig 7) Driver Rear Mounting Bracket Installation**

## STEP 5

Once all (3) Driver side mounting brackets are installed, then proceed to the Step Bar installation. **(Figs 8 & 9)**

- (1) Select (1) Slider and (2) M8X1.25-35mm Carriage Bolts;
- (2) Install (2) M8X1.25-35mm Carriage Bolts in (1) Slider.
- (3) Slide the Slider (with carriage bolts) to the **Step Bar**.
- (4) Repeat to install the other (2) sliders to the step bar.
- (5) Attach the Step Bar (with the Sliders) onto the installed mounting brackets. Position the Sliders to the installed brackets. Secure the Step Bar to the installed Brackets by using (6) M8 Large Flat Washers and (6) M8 Nylon Lock Nuts and (3) Sliders, **(Fig 9)**. Do not fully tighten hardware at this time.

**Note:** The Sliders are packed with the Mounting Brackets.

Level and adjust the Step Bar and fully tighten all hardware.

Repeat **Steps 1-5** for the other side Step Bar installation. **The installation is completed!!!**

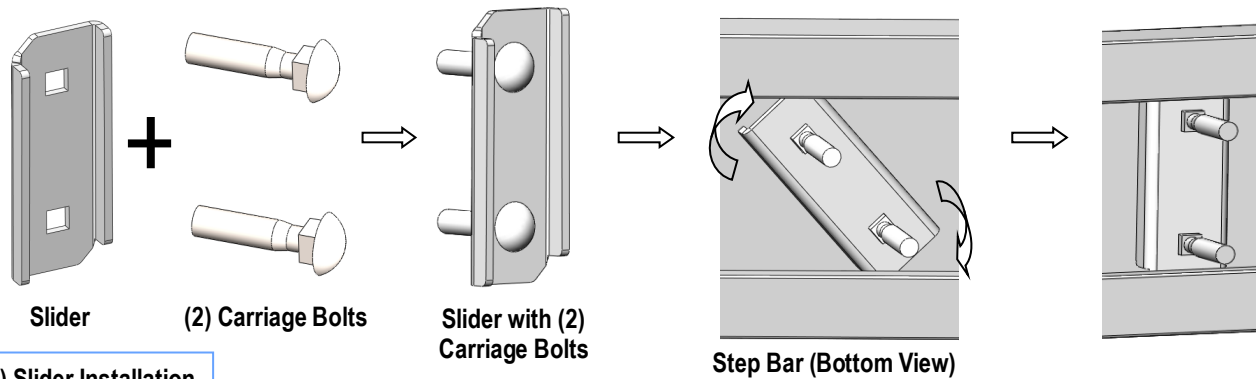
### Attention

**Do periodic inspections to the installation to make sure that all hardware is secure and tight.**

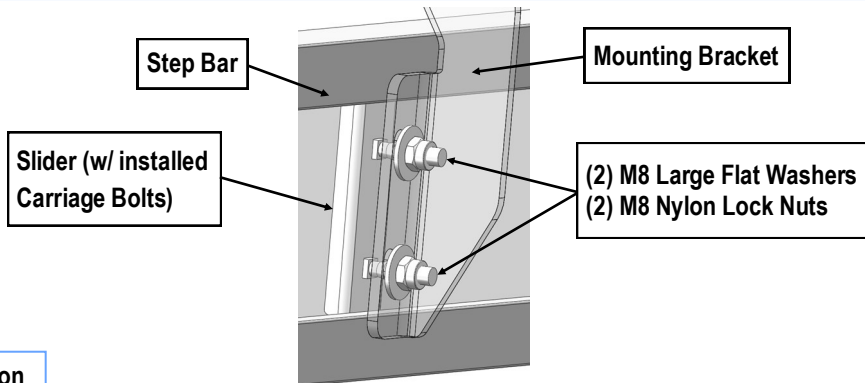
**In order to protect your bars/boards, please use mild soap/non-abrasive products for cleaning only.**



Scan for  
Installation Video



(Fig 8) Slider Installation



(Fig 9) Step Bar Installation