



## iBoard® by APS

PART#: IB-356C&H

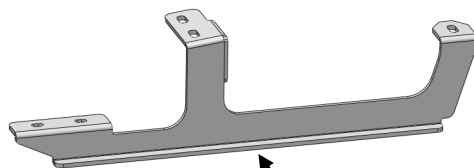
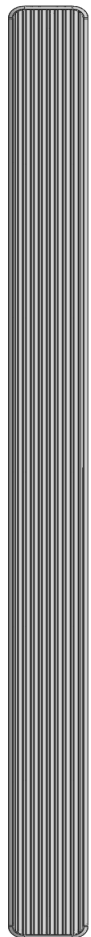
READ INSTRUCTIONS CAREFULLY BEFORE STARTING INSTALLATION. REMOVE CONTENTS FROM BOX AND VERIFY ALL PARTS ARE PRESENT. ASSISTANCE IS RECOMMENDED.

\*ROCKER PANEL MOUNT  
\*NO DRILLING REQUIRED

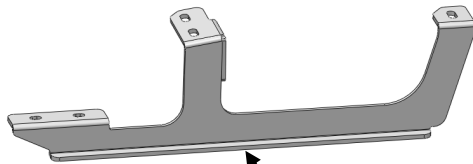
Fastener Size	Tightening Torque (ft-lbs)	Required
6mm	6-7	X
8mm	16-18	√
10mm	31-32	X
12mm	56-58	X
14mm	92-94	X

### PART LIST

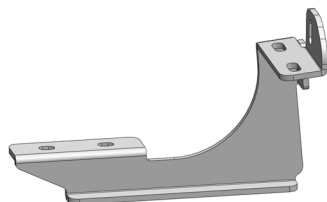
#### Driver Side Step Bar



Driver Front Mounting Bracket (DFM)



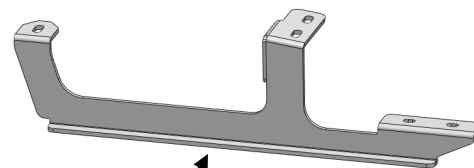
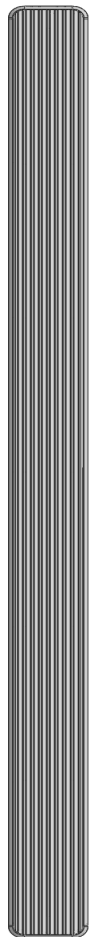
Driver Center Mounting Bracket (DCM)



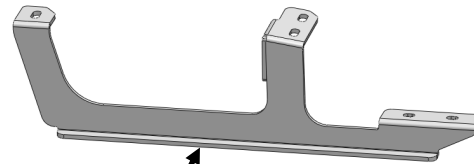
Driver Rear Mounting Bracket (DRM)

Front  
↑

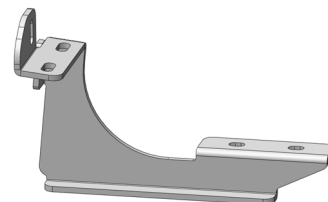
#### Passenger Side Step Bar



Passenger Front Mounting Bracket (PFM)



Passenger Center Mounting Bracket (PCM)



Passenger Rear Mounting Bracket (PRM)



## Hardware Package A (For Bracket Installation)

Item	QTY	Description	Item	QTY	Description
1#	18	M8X1.25-25mm Hex Bolts	3#	18	M8 Lock Washers
2#	18	M8 Flat Washers			



1#



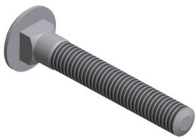
2#



3#

## Hardware Package B (For Stainless Steel Step Bar Installation)

Item	QTY	Description	Item	QTY	Description
1#	12	M8X1.25-35mm Carriage Bolts	3#	12	M8 Nylon Lock Nuts
2#	12	M8 Large Flat Washers	4#	6	Sliders (Packed with Step Bars)



1 #



2 #



3 #

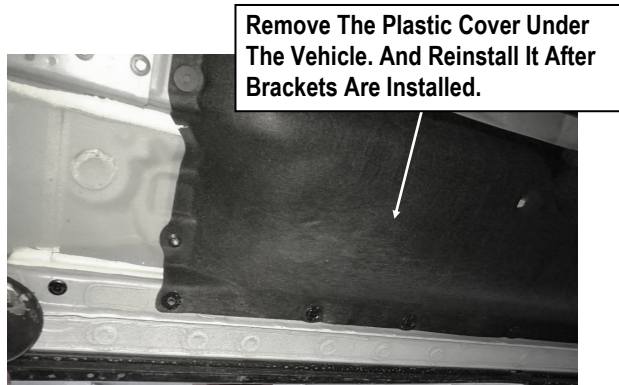


4 #



## STEP 1

Start installation from the driver side front of the vehicle. According to the user menu, remove the plastic cover under the driver side of the vehicle, (**Fig 1**).

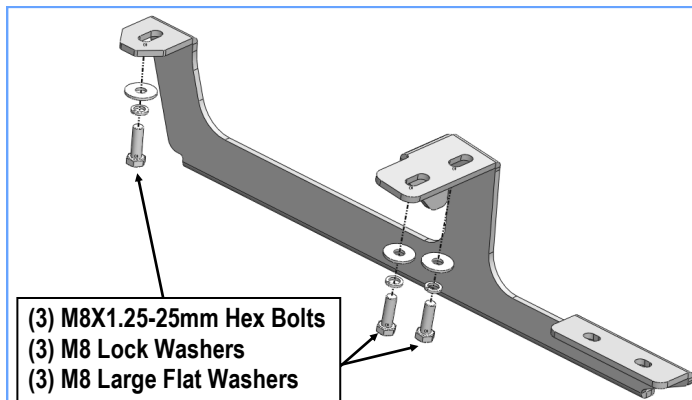


(Fig 1) Driver Side Front Mounting Location

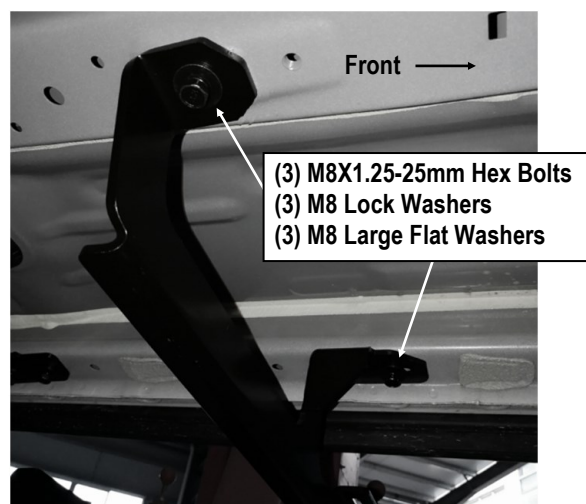
## STEP 2

Select the Driver Front Mounting Bracket. Attach the outer end of the Driver Front Mounting Bracket (**DFM**) to the (2) threaded holes next to the pinch weld with the included (2) M8X1.25-25mm Hex Bolts, (2) M8 Lock Washers, and (2) M8 Large Flat Washers, (**Fig 2A & 2B**). Attach the inner tab on the bracket to the threaded hole in the bottom of the inner frame channel with the included (1) M8X1.25-25mm Hex Bolt, (1) M8 Lock Washer, and (1) M8 Large Flat Washer, (**Fig 2A & 2B**). Do not fully tighten hardware at this time.

**IMPORTANT:** The Driver Front Mounting Bracket (**DFM**) and Driver Center Mounting Bracket (**DCM**) are similar but they are not same, (**Fig 2C**).



(Fig 2A) Driver Side Front Mounting Bracket Installation



(Fig 2B) Driver Side Front Mounting Bracket Installed

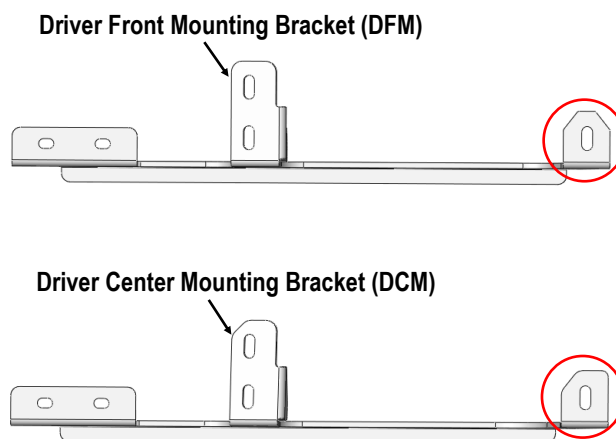


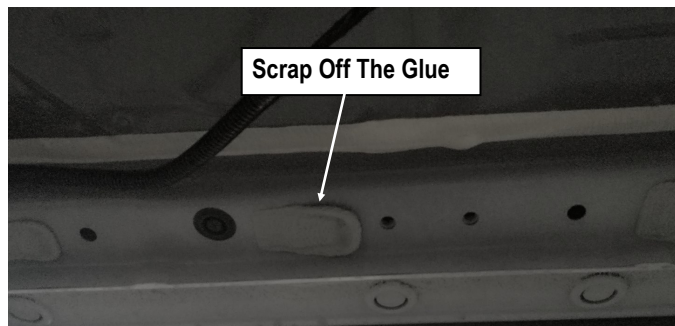
Fig 2C



## STEP 3

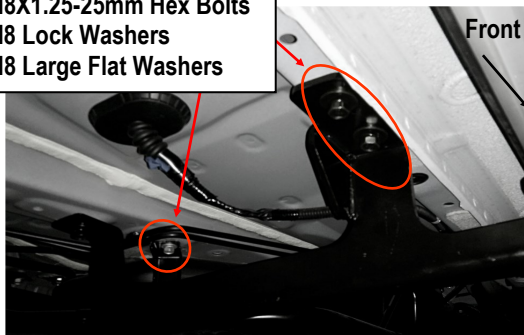
Move to the center & rear mounting location. Repeat **Steps 1 – 2** for Driver Center & Rear Mounting Brackets, (**Figs 4-5**).

**NOTE:** There is the dry glue on the driver side of the vehicle and block one mounting hole on the Driver Center Mounting Bracket. Please carefully scrap off the glue before install the Driver Center Mounting Bracket, (**Fig 3**).



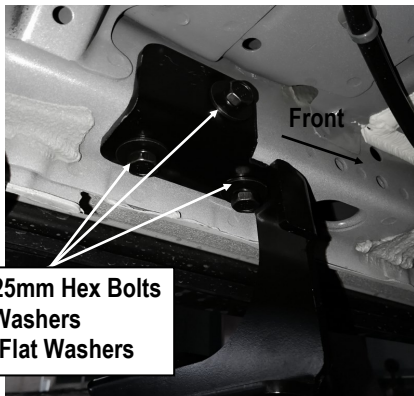
(Fig 3) Driver Side Center Mounting Location

- (3) M8X1.25-25mm Hex Bolts
- (3) M8 Lock Washers
- (3) M8 Large Flat Washers



(Fig 4) Driver Side Center Mounting Bracket Installed

- (3) M8X1.25-25mm Hex Bolts
- (3) M8 Lock Washers
- (3) M8 Large Flat Washers



(Fig 5) Driver Side Rear Mounting Bracket Installed

## STEP 4

Once all (3) Driver side mounting brackets are installed, then proceed to the Step Bar installation. (**Figs 6 & 7**)

- (1) Select (1) Slider and (2) M8X1.25-35mm Carriage Bolts;
- (2) Install (2) M8X1.25-35mm Carriage Bolts in (1) Slider.
- (3) Slide the Slider (with carriage bolts) to the **Step Bar**.
- (4) Repeat to install the other (2) sliders to the step bar.
- (5) Attach the Step Bar (with the Sliders) onto the installed mounting brackets. Position the Sliders to the installed brackets. Secure the Step Bar to the installed Brackets by using (6) M8 Large Flat Washers and (6) M8 Nylon Lock Nuts and (3) Sliders, (**Fig 7**). Do not fully tighten hardware at this time.

**Note:** The Sliders are packed with the Step Bars.

Level and adjust the Step Bar and fully tighten all hardware.

Repeat **Steps 1-4** for the other side Step Bar installation. **The installation is completed!!!**

### Attention

Do periodic inspections to the installation to make sure that all hardware is secure and tight.

In order to protect your bars/boards, please use mild soap/non-abrasive products for cleaning only.

