



## iBoard® by APS

PART#: IB-356

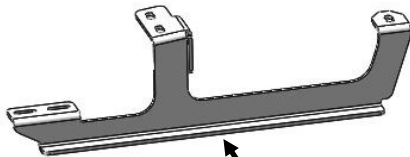
READ INSTRUCTIONS CAREFULLY BEFORE  
STARTING INSTALLATION. REMOVE CONTENTS  
FROM BOX AND VERIFY ALL PARTS ARE PRE-  
SENT. ASSISTANCE IS RECOMMENDED.

\*ROCKER PANEL MOUNT  
\*NO DRILLING REQUIRED

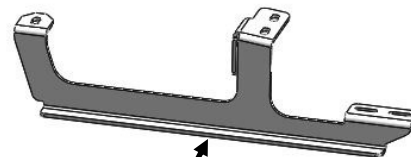
Fastener Size	Tightening Torque (ft-lbs)	Required
6mm	6-7	√
8mm	16-18	√
10mm	31-32	X
12mm	56-58	X
14mm	92-94	X

### PART LIST

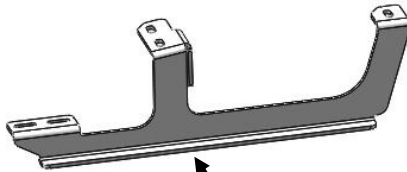
Front  
↑



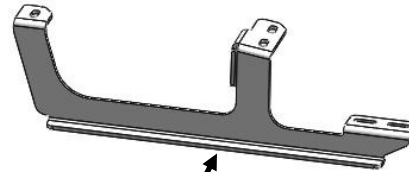
Driver Front Mounting  
Bracket (DFM)



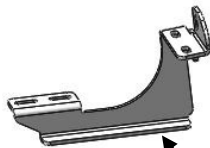
Passenger Front Mounting  
Bracket (PFM)



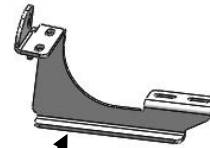
Driver Center Mounting  
Bracket (DCM)



Passenger Center Mounting  
Bracket (PCM)



Driver Rear Mounting  
Bracket (DRM)



Passenger Rear Mounting  
Bracket (PRM)



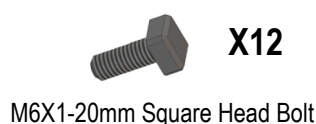
Customer Support: [info@iboardauto.com](mailto:info@iboardauto.com)



## Hardware Package A (For Bracket Installation)



## Hardware Package B (For Aluminum Step Bar Installation Only, Not Supply to Stainless Steel Step Bar)



## Hardware Package C (For Stainless Steel Step Bar Installation Only, Not Supply to Aluminum Step Bar)



## STEP 1

Start installation from the driver side front of the vehicle. According to the user menu, remove the plastic cover under the driver side of the vehicle, (**Fig 1**).



(Fig 1) Driver Side Front Mounting Location Pictured

## STEP 2

Select the Driver Front Mounting Bracket. Attach the outer end of the Driver Front Mounting Bracket (**DFM**) to the (2) threaded holes next to the pinch weld with the included (2) M8X1.25-25mm Hex Bolts, (2) M8 Lock Washers, and (2) M8 Large Flat Washers, (**Fig 2A & 2B**). Attach the inner tab on the bracket to the threaded hole in the bottom of the inner frame channel with the included (1) M8X1.25-25mm Hex Bolt, (1) M8 Lock Washer, and (1) M8 Large Flat Washer, (**Fig 2A & 2B**). Do not fully tighten hardware at this time.

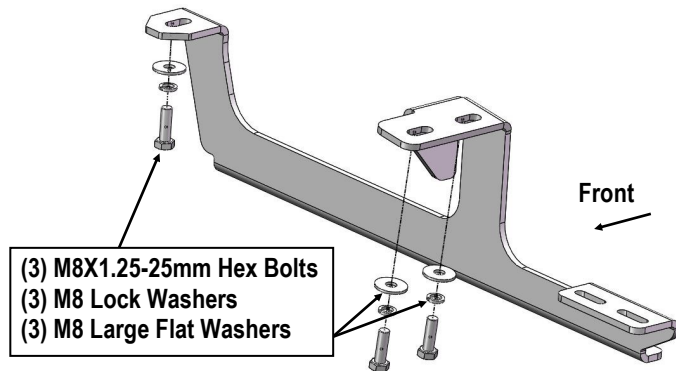
**IMPORTANT:** The Driver Front Mounting Bracket (**DFM**) and Driver Center Mounting Bracket (**DCM**) are similar but they are not same, (**Fig 2C**).



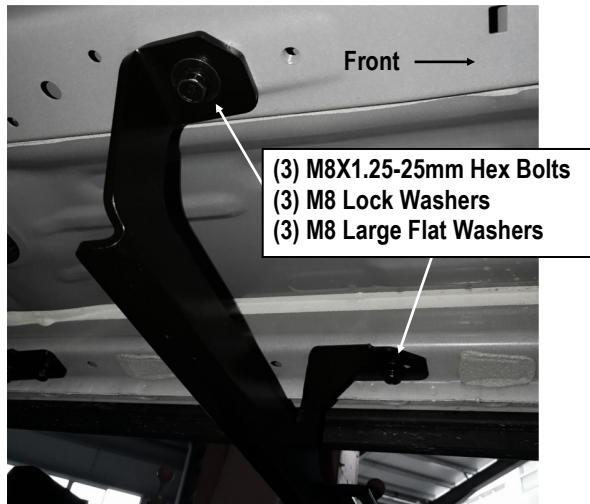
## STEP 3

Move to the center & rear mounting location. Repeat **Steps 1 – 2** for Driver Center & Rear Mounting Brackets, (**Figs 4-5**).

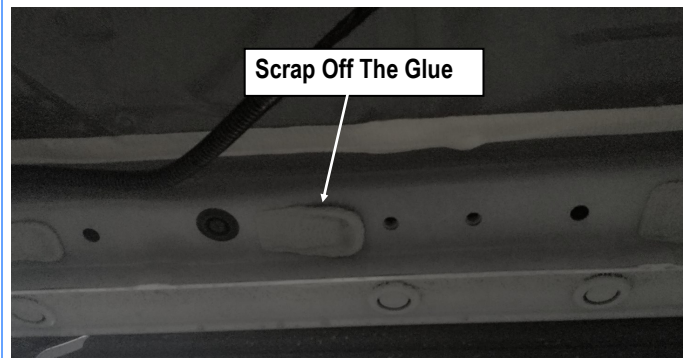
**NOTE:** There is the dry glue on the driver side of the vehicle and block one mounting hole on the Driver Center Mounting Bracket. Please carefully scrap off the glue before install the Driver Center Mounting Bracket, (**Fig 3**).



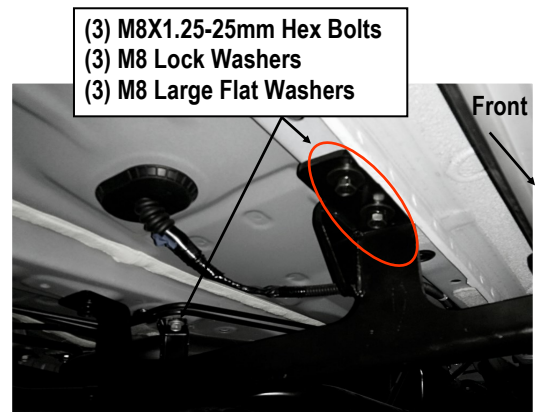
(Fig 2A) Driver Side Front Mounting Bracket Installation



(Fig 2B) Driver Side Front Mounting Bracket Installation

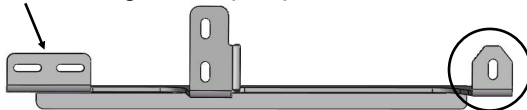


(Fig 3) Driver Side Center Mounting Location Pictured



(Fig 4) Driver Side Center Mounting Bracket Installation

Driver Front Mounting Bracket (DFM)



Driver Center Mounting Bracket (DCM)

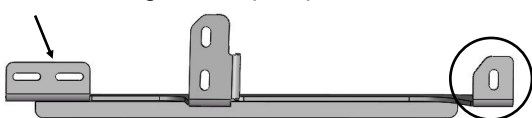
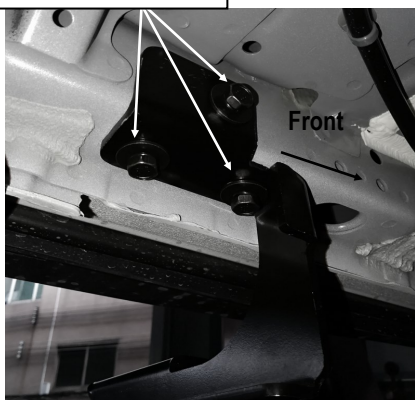


Fig 2C



- (3) M8X1.25-25mm Hex Bolts
- (3) M8 Lock Washers
- (3) M8 Large Flat Washers



(Fig 5) Driver Side Rear Mounting Bracket Installation

## STEP 4

Once all (3) mounting brackets are installed, then proceed to the Step Bar installation. According to the style of Step Bar proceed to the correct installation STEPS.

**Note:** Aluminum Step Bar refer to STEP 5; Stainless Steel Step Bar skip to STEP 6.

## STEP 5

### Aluminum Step Bar Installation:

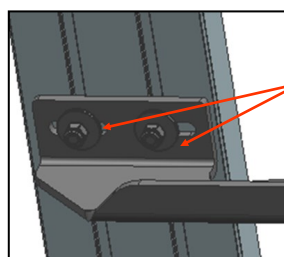
Select a **Aluminum Step Bar**. Slip (3) M6X1-20mm Square Head Bolts into each bottom channel (**Fig 6**). Carefully position the Step Bar onto the (3) Mounting Brackets.

**IMPORTANT:** Do not slide the Step Bar on the Brackets or the bottom surface of the board will be damaged. Attach the Step Bar to each Mounting Brackets with (2) M6X1-20mm Square Head Bolts, (2) M6 Large Flat Washers and (2) M6 Nylon Lock Nuts, (**Fig 7**). Do not fully tighten at this time.

Level and adjust the Step Bar and fully tighten all hardware. Repeat **Steps 1-5** for the other side Step Bar installation. **The installation is completed!!!**



(Fig 6) Slip M6X1-20mm Square Head Bolts Into The Bottom Channels



- (2) M6X1-20mm Square Head Bolts
  - (2) M6 Large Flat Washers
  - (2) M6 Nylon Lock Nuts
- IMPORTANT: TORQUE FOR 6MM FASTENERS MUST LESS THAN 6 -7 FT-LBS OR THE FASTENERS WILL BE DAMAGED!**

(Fig 7) Running Board Installed Onto Mounting Bracket

## STEP 6

### Stainless Steel Step Bar Installation:

Select a **Stainless Steel Step Bar** (with the U-Sliders installed on the Bar). Loose the U-Sliders, reposition the U-Sliders onto the board according to the (3) Installed Mounting Brackets location, (**Fig 8**). Re-secure the U-Sliders on the Step Bar. Attach the Step Bar to the installed Mounting Brackets with (6) M6X1-20mm Hex Bolts, (6) M6 Large Flat Washers & (6) M6 Lock Washers, (**Fig 9**). Do not fully tighten hardware at this time. Level and adjust the Step Bar and fully tighten all hardware. Repeat **Steps 1-4 and 6** for the other side Step Bar installation. **The installation is completed!!!**

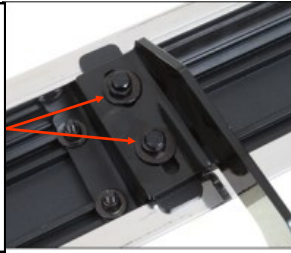


(Fig 8) Slide & line up the U-Slider with the installed mounting brackets along bottom channel



- (2) M6X1-20mm Hex Bolts
- (2) M6 Large Flat Washers
- (2) M6 Lock Washers

**IMPORTANT: TORQUE FOR 6MM  
FASTNERS MUST LESS THAN 6-  
7 FT-LBS OR THE FASTNERS  
WILL BE DAMAGED!**



(Fig 9) Step Bar Installed on Bracket Installed (Example)

### Attention

**Do periodic inspections to the installation to make sure  
that all hardware is secure and tight.**

**In order to protect your bars/boards, please use mild  
soap/non-abrasive products for cleaning only.**