



iBoard® by APS

PART#: IB-141

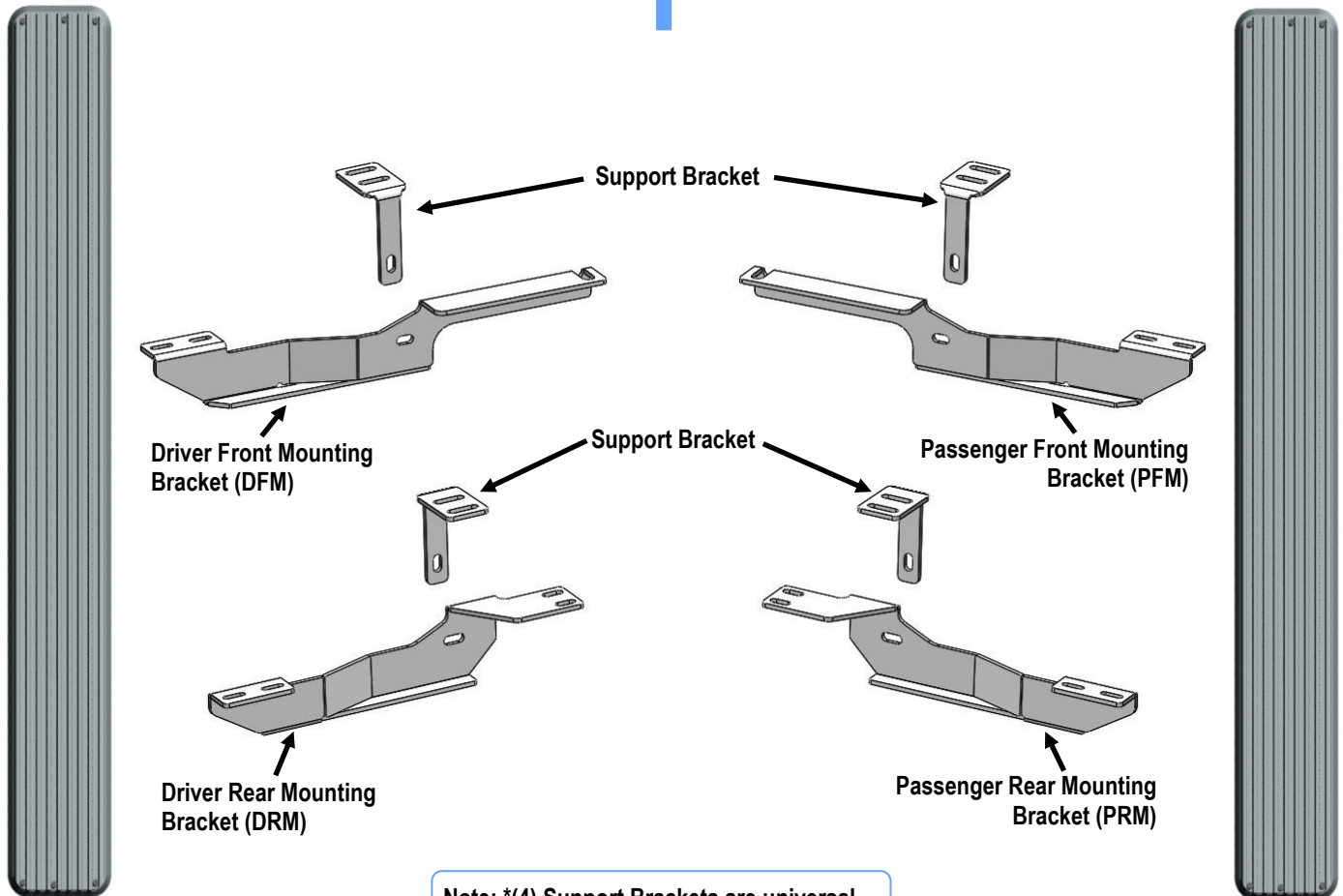
READ INSTRUCTIONS CAREFULLY BEFORE
STARTING INSTALLATION. REMOVE CONTENTS
FROM BOX AND VERIFY ALL PARTS ARE PRE-
SENT. ASSISTANCE IS RECOMMENDED.

*ROCKER PANEL MOUNT
*NO DRILLING REQUIRED

Fastener Size	Tightening Torque (ft-lbs)	Required
6mm	6-7	✓
8mm	16-18	✓
10mm	31-32	X
12mm	56-58	X
14mm	92-94	X

PART LIST

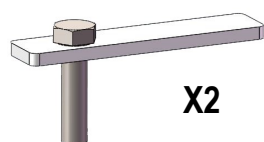
Front
↑



Note: *(4) Support Brackets are universal

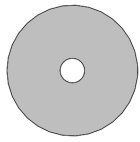


Hardware Package A (For Bracket Installation)



X2

M8 Bolt Plate



X2

M8 Plastic Washer



X12

M8X1.25-
40mm Hex Bolt



X6

M8X1.25-
30mm Hex Bolt



X22

M8 Large Flat Washer



X18

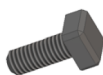
M8 Lock Washer



X6

M8 Hex Nut

Hardware Package B (For Aluminum Step Bar Installation Only, Not Supply to Stainless Steel Step Bar)



X8

M6X1-20mm Square Head Bolt



X8

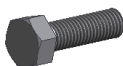
M6 Large Flat Washer



X8

M6 Nylon Lock Nut

Hardware Package C (For Stainless Steel Step Bar Installation Only, Not Supply to Aluminum Step Bar)



X8

M6X1-20mm Hex Bolt



X8

M6 Lock Washer



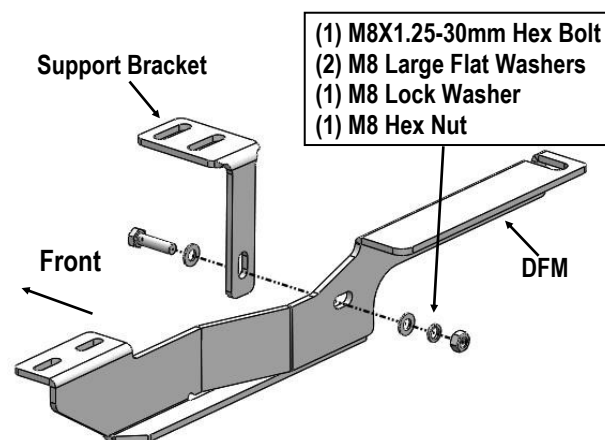
X8

M6 Flat Washer

STEP 1

Start installation from the driver side front of the vehicle. Select (1) Support Bracket and (1) Driver Front Mounting Bracket (**DFM**), assemble with (1) M8X1.25-30mm Hex Bolt, (2) M8 Large Flat Washers, (1) M8 Lock Washer and (1) M8 Hex Nut, (**Fig 1**). Do not fully tighten hardware at this time.

Note: The (4) Support Brackets are universal.



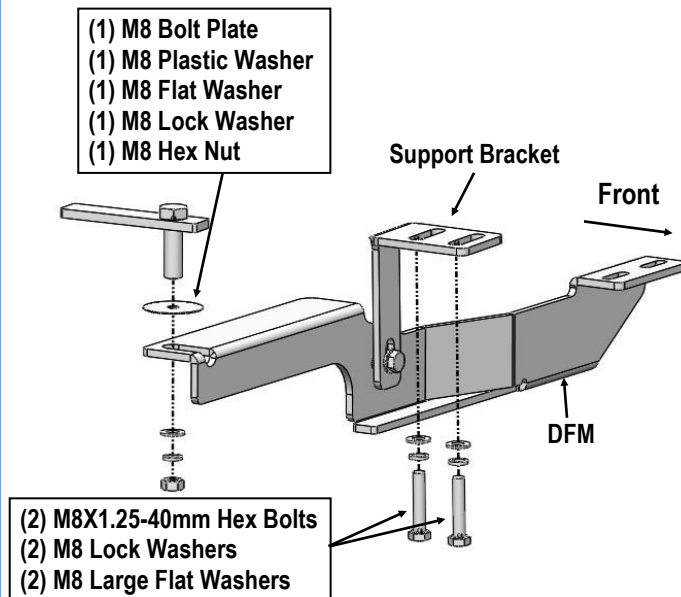
(Fig 1) Driver Front Bracket Assembly



STEP 2

From underneath vehicle, place Driver Front Mounting Bracket (**DFM**) in position. Attach it to the frame with (1) M8 Bolt Plate, (1) M8 Plastic Washer, (1) M8 Large Flat Washer, (1) M8 Lock Washer, (1) M8 Hex Nut, (**Fig 2**). Do not fully tighten hardware at this time.

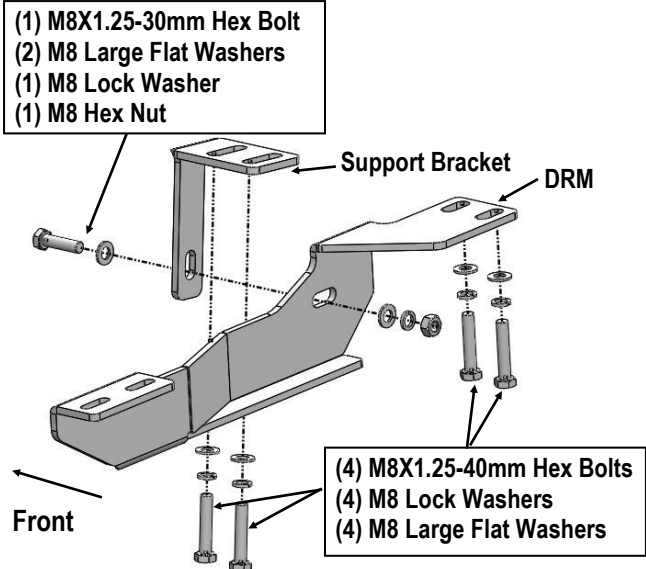
Attach Support Bracket to the frame with (2) M8X1.25-40mm Hex Bolts, (2) M8 Large Flat Washers and (2) M8 Lock Washers, (**Fig 2**). Do not fully tighten hardware at this time.



(Fig 2) Driver Front Bracket Installation

STEP 3

Move to the rear mounting location. Repeat **Step 1** for the Driver Rear Mounting Bracket (**DRM**) and the Support Bracket assembly, (**Fig 3**). Then, attach the assembled Driver Rear Bracket with (4) M8X1.25-40mm Hex Bolts, (4) M8 Large Flat Washers and (4) M8 Lock Washers, (**Fig 3**). Do not fully tighten hardware at this time.



(Fig 3) Driver Rear Bracket Installation

STEP 4

Once all (2) mounting brackets are installed, then proceed to the Step Bar installation. According to the style of Step Bar proceed to the correct installation STEPS.

Note: Aluminum Step Bar refer to STEP 5; Stainless Steel Step Bar skip to STEP 6.

STEP 5

Aluminum Step Bar Installation:

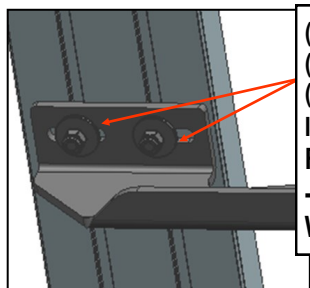
Select a **Aluminum Step Bar**. Slip (2) M6X1-20mm Square Head Bolts into each bottom channel (**Fig 4**). Carefully position the Step Bar onto the (2) Mounting Brackets.

IMPORTANT: Do not slide the Step Bar on the Brackets or the bottom surface of the board will be damaged. Attach the Step Bar to each Mounting Brackets with (2) M6X1-20mm Square Head Bolts, (2) M6 Large Flat Washers and (2) M6 Nylon Lock Nuts, (**Fig 5**). Do not fully tighten at this time.

Level and adjust the Step Bar and fully tighten all hardware. Repeat **Steps 1-5** for the other side Step Bar installation. **The installation is completed!!!**



(Fig 4) Slip M6X1-20mm Square Head Bolts Into The Bottom Channels



(2) M6X1-20mm Square Head Bolts
(2) M6 Large Flat Washers
(2) M6 Nylon Lock Nuts
IMPORTANT: TORQUE FOR 6MM FASTNERS MUST LESS THAN 6-7 FT-LBS OR THE FASTNERS WILL BE DAMAGED!

(Fig 5) Running Board Installed Onto Mounting Bracket

STEP 6

Stainless Steel Step Bar Installation:

Select a **Stainless Steel Step Bar** (with the U-Sliders installed on the Bar). Loose the U-Sliders, reposition the U-Sliders onto the board according to the (2) Installed Mounting Brackets location, **(Fig 6)**. Re-secure the U-Sliders on the Step Bar. Attach the Step Bar to the installed Mounting Brackets with (4) M6X1-20mm Hex Bolts, (4) M6 Large Flat Washers & (4) M6 Lock Washers, **(Fig 7)**. Do not fully tighten hardware at this time. Level and adjust the Step Bar and fully tighten all hardware. Repeat **Steps 1-4 and 6** for the other side Step Bar installation. **The installation is completed!!!**



(Fig 6) Slide & line up the U-Slider with the installed mounting brackets along bottom channel

(2) M6X1-20mm Hex Bolts
(2) M6 Large Flat Washers
(2) M6 Lock Washers
IMPORTANT: TORQUE FOR 6MM FASTNERS MUST LESS THAN 6-7 FT-LBS OR THE FASTNERS WILL BE DAMAGED!



(Fig 7) Step Bar Installed on Bracket Installed (Example)

Attention

Do periodic inspections to the installation to make sure that all hardware is secure and tight.

In order to protect your bars/boards, please use mild soap/non-abrasive products for cleaning only.