

iBoard®

iBoard® by APS

PART#: IB-062A-B

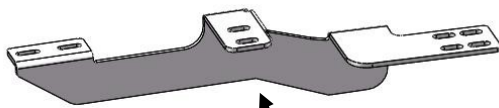
READ INSTRUCTIONS CAREFULLY BEFORE STARTING INSTALLATION. REMOVE CONTENTS FROM BOX AND VERIFY ALL PARTS ARE PRESENT. ASSISTANCE IS RECOMMENDED.

*ROCKER PANEL MOUNT
*NO DRILLING REQUIRED

Fastener Size	Tightening Torque (ft-lbs)
6mm	6-7
8mm	16-18
10mm	31-32
12mm	56-58
14mm	92-94

PART LIST

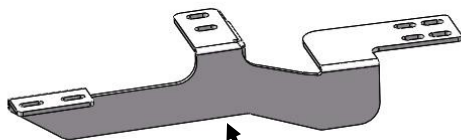
Front



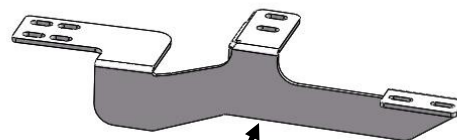
Driver Front / Passenger Rear Mounting Bracket (DFM/PRM)



Passenger Front / Driver Rear Mounting Bracket (PFM/DRM)



PFM/DRM



DFM/PRM

Note: *Driver Front & Passenger Rear Mounting Brackets are universal
*Passenger Front & Driver Rear Mounting Brackets are universal

Customer Support: info@iboardauto.com

iBoard®



X24
M8x1.25-35mm
Hex Bolt



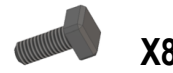
X24
M8 Flat Washer



X24
M8 Lock Washer



X24
M8 Hex Nut



X8
M6x1-20 Square
Head Bolt



X8
M6 Large Flat
Washer



X8
M6 Nylon
Lock Nut

STEP 1

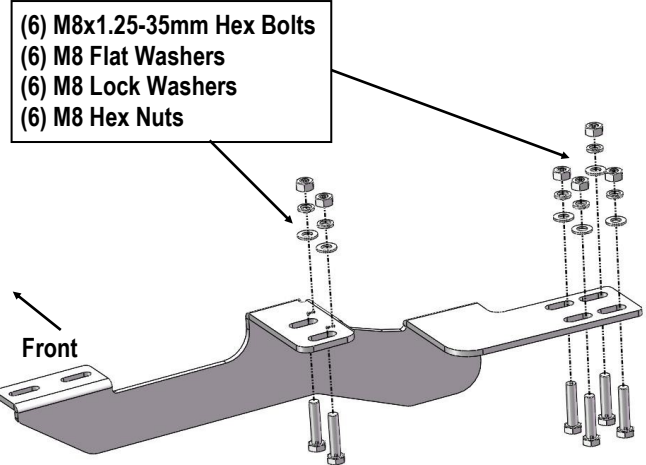
Start installation from the driver side front of the vehicle. From underneath vehicle, place driver side front bracket in position as shown in **(Fig 1)**.



Fig 1

STEP 2

Attach Driver Front Mounting Bracket (**DFM/DRM**) to location with (6) M8x1.25-35mm Hex Bolts, (6) M8 Flat Washers, (6) M8 Lock Washers, (6) M8 Hex Nuts, **(Fig 3)**. Do not fully tighten at this time.
Repeat for Driver Rear Mounting Bracket (**DFM/DRM**) installation.



(Fig 2) Driver Front Mounting Bracket Installation

STEP 3

Select a Running Board. Slip (2) M6x1-20mm Square Head Bolts into each bottom channel, **(Fig 3)**. Carefully position the Running Board onto the (2) Mounting Brackets.

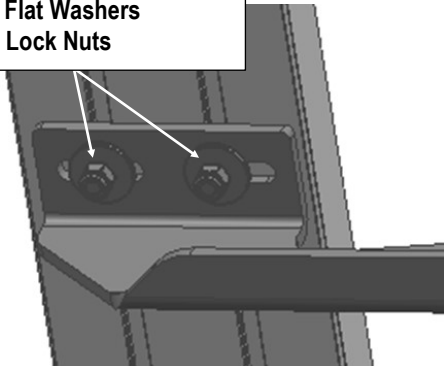
IMPORTANT: Do not slide the Running Board on the Brackets or the bottom surface of the board will be damaged. Attach the Running Board to each Mounting Bracket with (2) M6x1-20mm Square Head Bolts, (2) M6 Large Flat Washers and (2) M6 Nylon Lock Nuts, **(Fig 4)**. Do not fully tighten at this time.

iBoard®



(Fig 3) Slip M6X1-20mm Square Head Bolts Into The Bottom Channels

- (2) M6X1-20mm Square Head Bolts
- (2) M6 Large Flat Washers
- (2) M6 Nylon Lock Nuts



(Fig 4) Running Board Installed Onto the Mounting Bracket

STEP 4

Level and adjust the Running Board and fully tighten all hardware.

STEP 5

Repeat **Steps 1-4** for other side Running Board installation. The installation is completed.

Attention

Do periodic inspections to the installation to make sure that all hardware is secure and tight.

In order to protect your bars/boards, please use only mild soap/non-abrasive products for cleaning.