



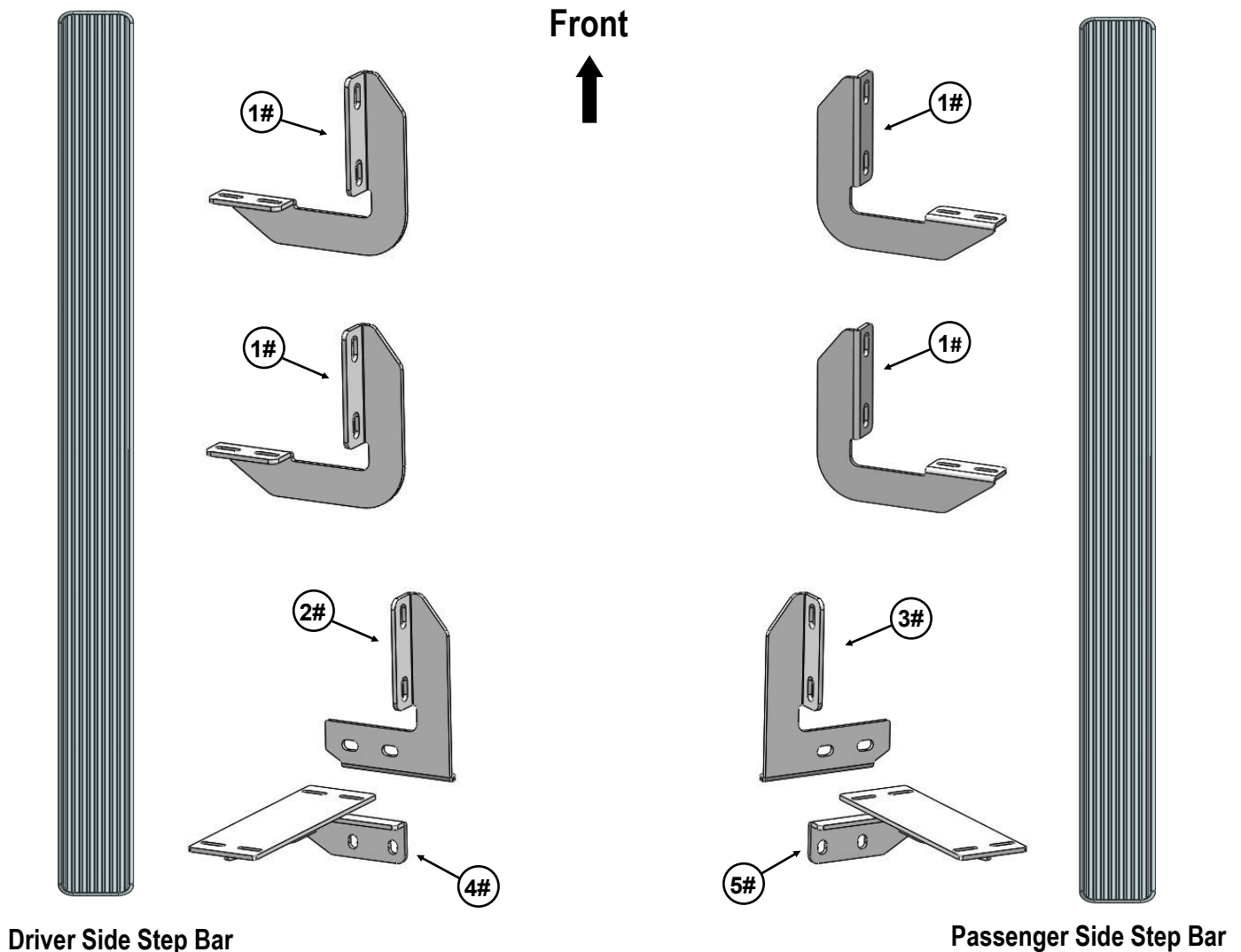
## iBoard® by APS

PART#: IB-003L&011[L,S]

READ INSTRUCTIONS CAREFULLY BEFORE STARTING INSTALLATION. REMOVE CONTENTS FROM BOX AND VERIFY ALL PARTS ARE PRESENT. ASSISTANCE IS RECOMMENDED.

\*ROCKER PANEL MOUNT  
\*NO DRILLING REQUIRED

Fastener Size	Tightening Torque (ft-lbs)	Required
6mm	6-7	√
8mm	16-18	X
10mm	31-32	√
12mm	56-58	X
14mm	92-94	X





## Mounting Bracket List

Item	QTY	Description	Item	QTY	Description
1#	4	Mounting Brackets	4#	1	Driver Rear Bar Bracket
2#	1	Driver Rear Mounting Bracket	5#	1	Passenger Rear Bar Bracket
3#	1	Passenger Rear Mounting Bracket			

## Hardware Package A (For Bracket Installation)

Item	QTY	Description	Item	QTY	Description
1#	16	M10X1.5-30 Hex Bolts	4#	10	M10 Hex Nuts
2#	26	M10 Flat Washers	5#	6	M10 Clip Nuts
3#	16	M10 Lock Washers			



1 #



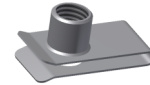
2 #



3 #



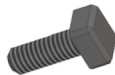
4 #



5 #

## Hardware Package B (For Aluminum Step Bar Installation Only, Not Supply to SS. Step Bar)

Item	QTY	Description	Item	QTY	Description
1#	16	M6X1-20 Square Head Bolts	3#	16	M6 Nylon Lock Nuts
2#	16	M6 Large Flat Washers			



1 #



2 #



3 #

## Hardware Package C (For Stainless Steel Step Bar Installation Only, Not Supply to Aluminum Step Bar)

Item	QTY	Description	Item	QTY	Description
1#	16	M6X1-20 Hex Bolts	3#	16	M6 Flat Washers
2#	16	M6 Lock Washers			



1 #



2 #

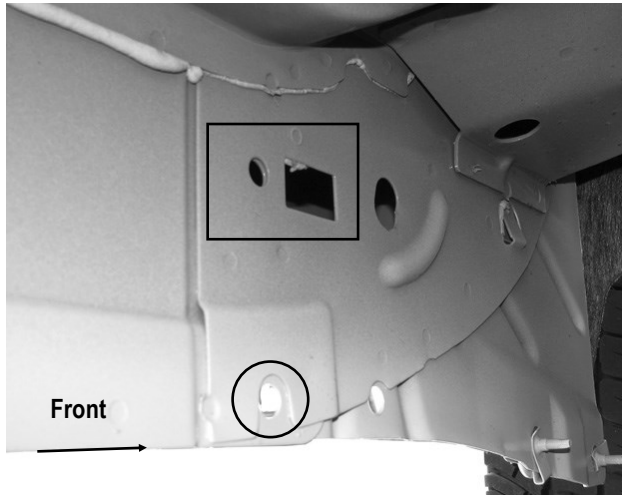


3 #

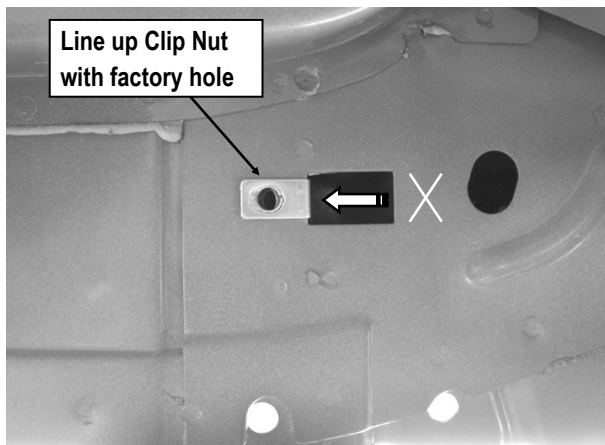


## STEP 1

Starting on the driver side front of the vehicle, locate the front set of factory holes in the body panel and (1) hole in the pinch weld under the front of the front door, (**Figs 1 & 2**). Insert (1) M10 Clip Nut into the rectangular opening and line up the threaded hole in the Clip with the round hole next to the opening. **NOTE:** Threaded nut must go towards the inside of the body panel, (**Figs 1 & 2**).



(Fig 1) Driver Side Front Mounting Location



(Fig 2) Insert (1) M10 Clip Nut

## STEP 2

Select (1) Mounting Bracket. Insert (1) M10X1.5-30 Hex Bolt, (1) M10 Lock Washer and (1) M10 Flat Washer through the top hole in the Mounting Bracket and into the Clip Nut. Do not fully tighten hardware at this time.

Bolt the bottom of the Bracket to the pinch weld, (and Support Bracket), with the included (1) M10X1.5-30 Hex Bolt, (1) M10 Lock Washer, (2) M10 Flat Washers and (1) M10 Hex Nut, (**Figs 3 & 4**). **NOTE:** Insert Hex Bolts in from the outside, through the pinch weld and then the Bracket. **IMPORTANT:** Cradles on the Mounting Brackets should face the front of the vehicle.

(1) M10 Clip Nut  
(1) M10X1.5-30 Hex Bolt  
(1) M10 Lock Washer  
(1) M10 Flat Washer

(1) M10X1.5-30 Hex Bolt  
(2) M10 Flat Washers  
(1) M10 Lock Washer  
(1) M10 Hex Nut

(Fig 3) Driver Side Front Mounting Bracket Installed

(1) M10 Clip Nut  
(1) M10X1.5-30 Hex Bolt  
(1) M10 Lock Washer  
(1) M10 Flat Washer

(1) M10X1.5-30 Hex Bolt  
(2) M10 Flat Washers  
(1) M10 Lock Washer  
(1) M10 Hex Nut

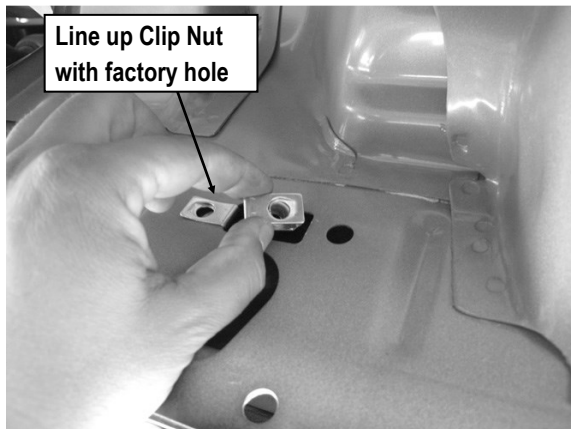
(Fig 4) Driver Side Front Mounting Bracket Installed



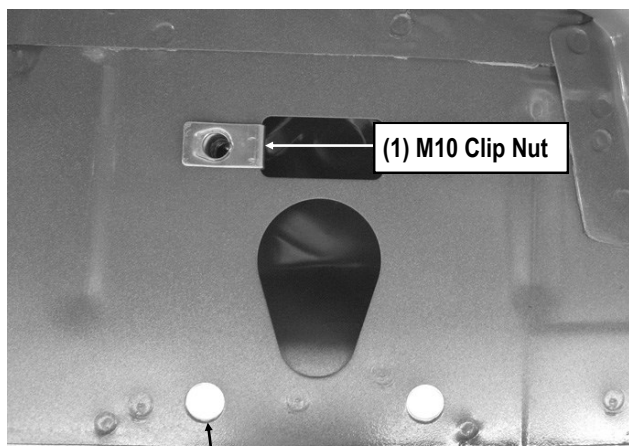
## STEP 3

Move to the driver side center mounting location. Repeat **Step 1** to install (1) M10 Clip Nut, (**Figs 5-6**).

Attach (1) Mounting Bracket to the installed M10 Clip Nut with (1) M10X1.5-30 Hex Bolt, (1) M10 Lock Washer and (1) M10 Flat Washer; to the pinch weld with (1) M10X1.5-30 Hex Bolt, (1) M10 Lock Washer, (2) M10 Flat Washers and (1) M10 Hex Nut. Do not fully tighten hardware at this time. **Note:** Front Mounting Bracket and Center Mounting Bracket are universal.



(Fig 5) Driver Side Center Mounting Location (Example)



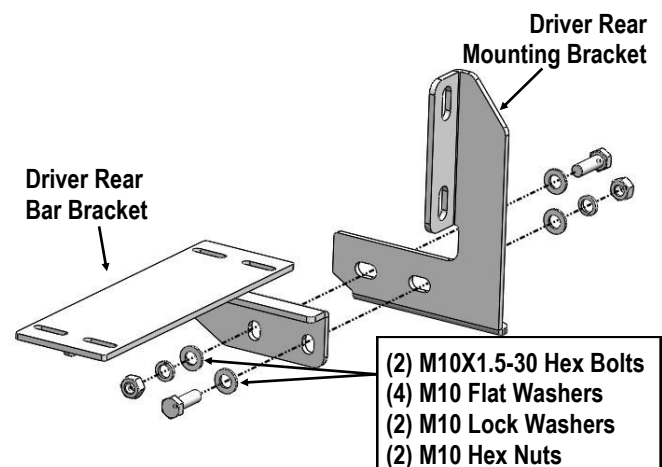
Factory holes in pinch weld

(Fig 6) Insert (2) M10 Clip Nuts

## STEP 4

Move to the driver side rear location. Assemble (1) Driver Rear Mounting Bracket and (1) Driver Rear Bar Bracket with (2) M10X1.5-30 Hex Bolts, (2) M10 Lock Washers, (4) M10 Flat Washers and (2) M10 Hex Nuts, (**Fig 7**). Do not fully tighten hardware at this time.

Then, repeat **Step 1-4** to install the assembled driver side rear Brackets. Do not fully tighten hardware at this time.



(Fig 7) Driver Rear Brackets Assembly

## STEP 5

Once all (3) mounting brackets are installed, then proceed to the Step Bar installation. According to the style of Step Bar proceed to the correct installation STEPS.

**Note:** Aluminum Step Bar refer to **STEP 6**; Stainless Steel Step Bar skip to **STEP 7**.



## STEP 6

### Aluminum Step Bar Installation:

Select a **Aluminum Step Bar**. Slip (4) M6x1-20 Square Head Bolts into each bottom channel (**Fig 8**). Carefully position the Step Bar onto the (3) Mounting Brackets. **IMPORTANT:** Do not slide the Step Bar on the Brackets or the bottom surface of the board will be damaged.

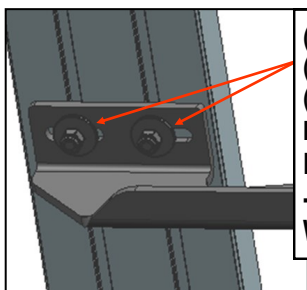
Attach the Running Board to Front & Center Mounting Brackets with (2) M6X1-20 Square Head Bolts, (2) M6 Flat Washers and (2) M6 Nylon Lock Nuts (**Fig 9**).

Attach the Running Board to Rear Bar Bracket with (4) M6X1-20 Square Head Bolts, (4) M6 Flat Washers and (4) M6 Nylon Lock Nuts (**Fig 10**). Do not tighten hardware at this time.

Level and adjust the Step Bar and fully tighten all hardware. Repeat **Steps 1-7** for the other side Step Bar installation. **The installation is completed!!!**

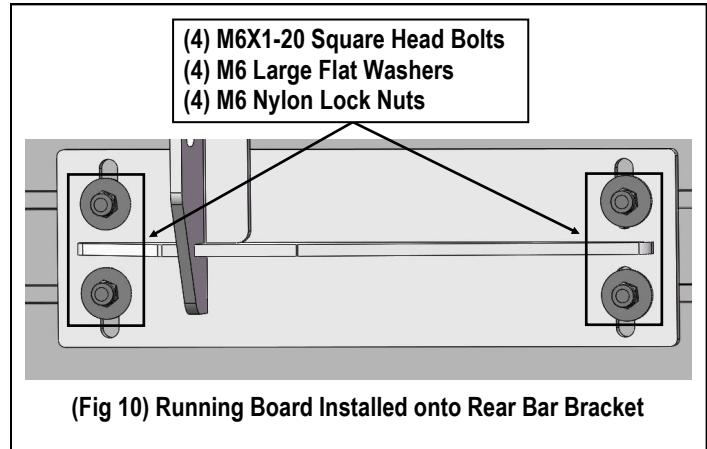


(Fig 8) Slip M6X1-20 Square Head Bolts Into The Bottom Channels



(2) M6X1-20 Square Head Bolts  
(2) M6 Large Flat Washers  
(2) M6 Nylon Lock Nuts  
**IMPORTANT: TORQUE FOR 6MM FASTNERS MUST LESS THAN 6 -7 FT-LBS OR THE FASTNERS WILL BE DAMAGED!**

(Fig 9) Running Board Installed Onto Mounting Bracket



(Fig 10) Running Board Installed onto Rear Bar Bracket

## STEP 7

### Stainless Steel Step Bar Installation:

Select a **Stainless Steel Step Bar** (with the U-Sliders installed on the Bar). Loose the U-Sliders, reposition the U-Sliders onto the board according to the (3) Installed Mounting Brackets location, (**Fig 11**). Re-secure the U-Sliders on the Step Bar. Attach the Step Bar to the installed Front & Center Mounting Brackets with (4) M6X1-20mm Hex Bolts, (4) M6 Large Flat Washers & (4) M6 Lock Washers, (**Fig 12**). Attach the Step Bar to Rear Bar Bracket with (4) M6X1-20mm Hex Bolts, (4) M6 Large Flat Washers & (4) M6 Lock Washers, (**Fig 13**). Do not tighten hardware at this time.

Level and adjust the Step Bar and fully tighten all hardware. Repeat **Steps 1-6 and 8** for the other side Step Bar installation. **The installation is completed!!!**



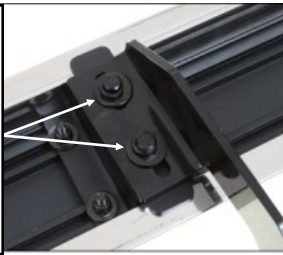
(Fig 11) Slide & line up the U-Slider with the installed mounting brackets along bottom channel





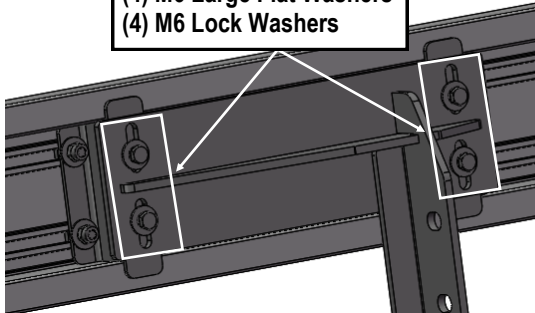
- (2) M6X1-20 Hex Bolts
- (2) M6 Large Flat Washers
- (2) M6 Lock Washers

**IMPORTANT: TORQUE FOR 6MM FASTNERS MUST LESS THAN 6-7 FT-LBS OR THE FASTNERS WILL BE DAMAGED!**



(Fig 12) Step Bar Installed Onto Mounting Bracket (Example)

- (4) M6X1-20mm Hex Bolts
- (4) M6 Large Flat Washers
- (4) M6 Lock Washers



(Fig 13) Step Bar Installed onto Rear Bar Bracket (Example)

### Attention

Do periodic inspections to the installation to make sure that all hardware is secure and tight.

In order to protect your bars/boards, please use mild soap/non-abrasive products for cleaning only.