

iBoard®

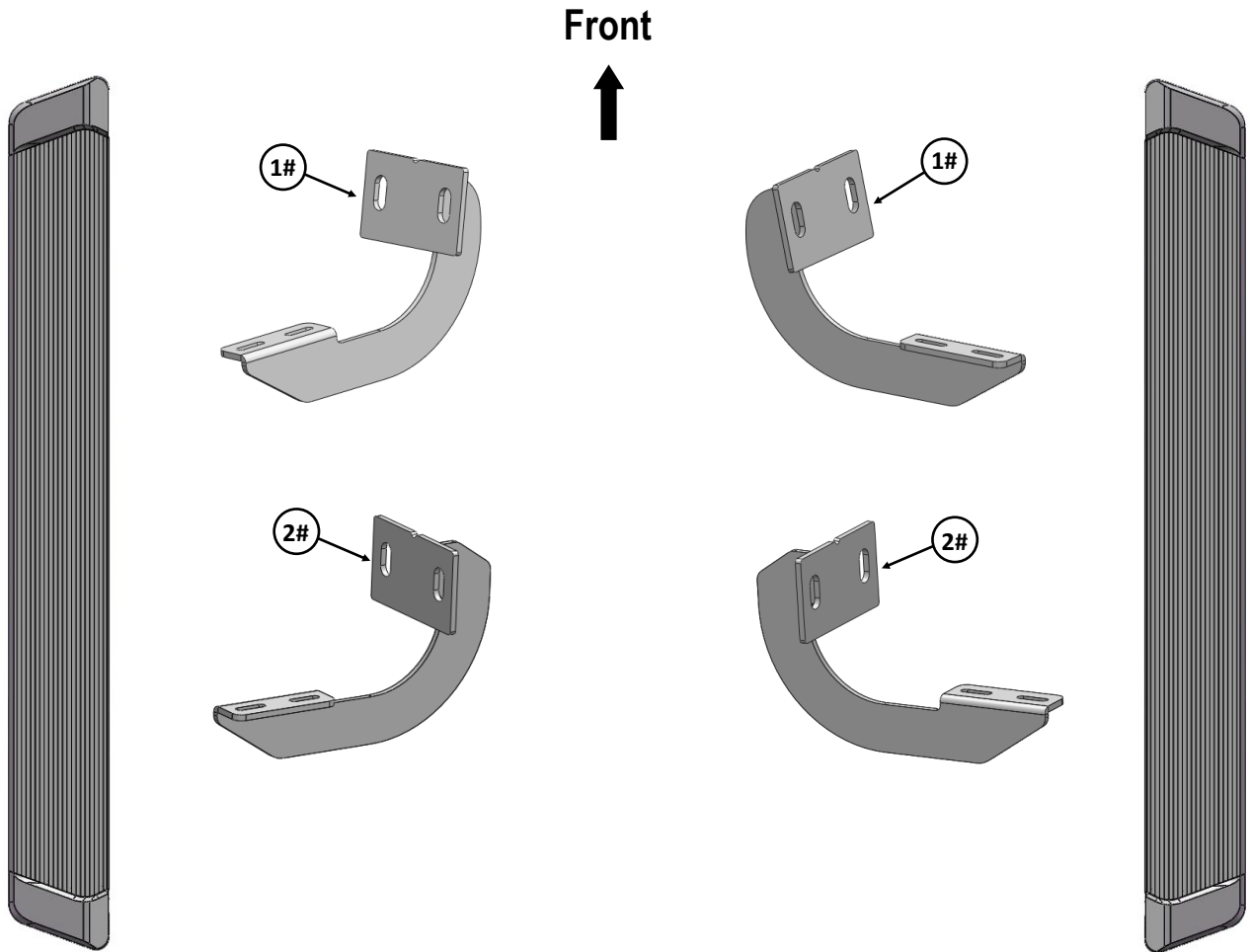
iBoard® by APS

PART#: IB-R008

READ INSTRUCTIONS CAREFULLY BEFORE STARTING INSTALLATION. REMOVE CONTENTS FROM BOX AND VERIFY ALL PARTS ARE PRESENT. ASSISTANCE IS RECOMMENDED.

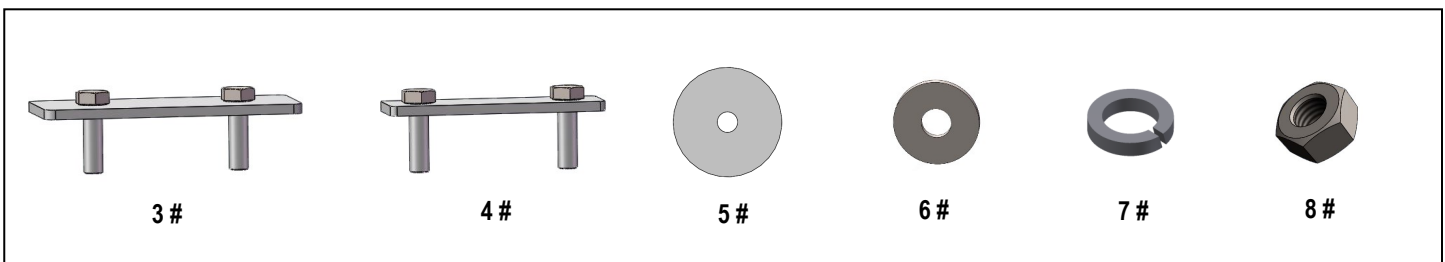
*ROCKER PANEL MOUNT
*NO DRILLING REQUIRED

Fastener Size	Tightening Torque (ft-lbs)	Required
6mm	6-7	√
8mm	16-18	X
10mm	31-32	√
12mm	56-58	X
14mm	92-94	X

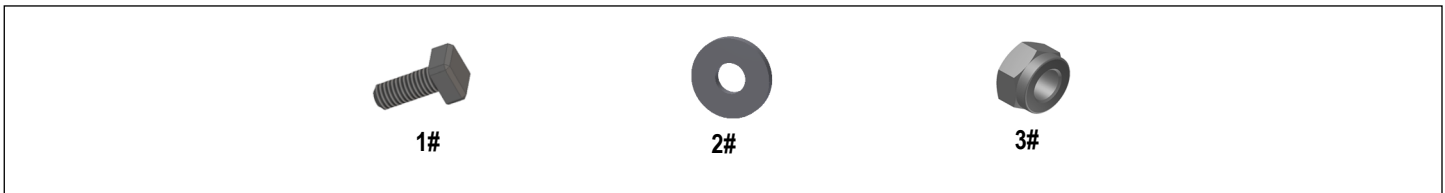


iBoard®

Hardware Package A (For Bracket Installation)					
Item	QTY	Description	Item	QTY	Description
1#	2	Driver / Passenger Front Mounting Brackets	5#	2	Plastic Washers
2#	2	Driver / Passenger Rear Mounting Brackets	6#	8	M10 Large Flat Washers
3#	4	M10 Large Double Bolt Plates	7#	8	M10 Lock Washers
4#	1	M10 Small Double Bolt Plates	8#	8	M10 Hex Nuts



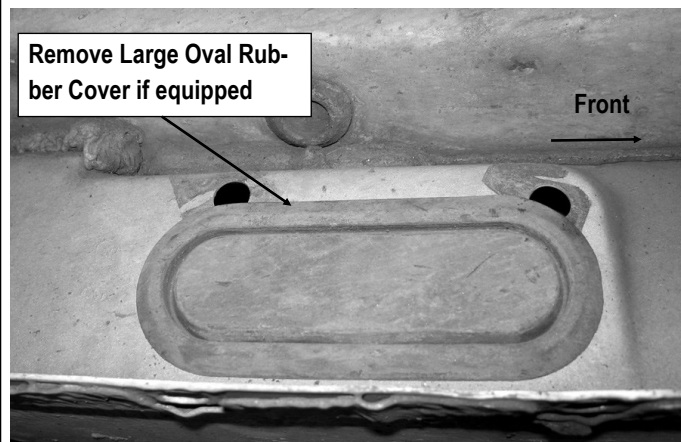
Hardware Package B (For Step Bar Installation)					
Item	QTY	Description	Item	QTY	Description
1#	8	M6X1-20mm Square Head Bolts	3#	8	M6 Nylon Lock Nuts
2#	8	M6 Large Flat Washers			



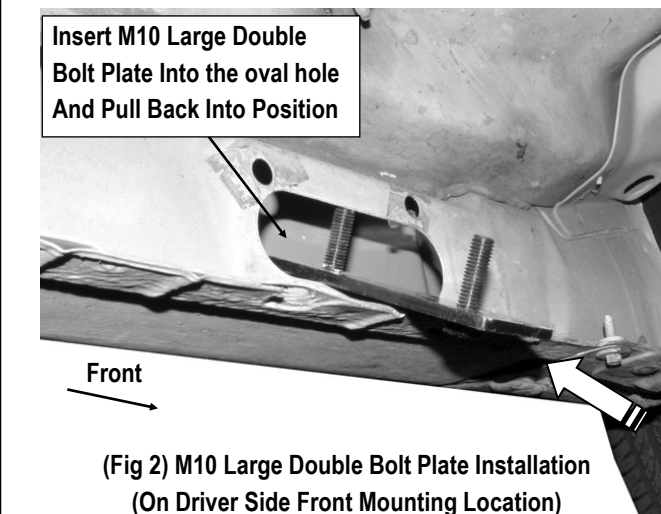
iBoard®

STEP 1

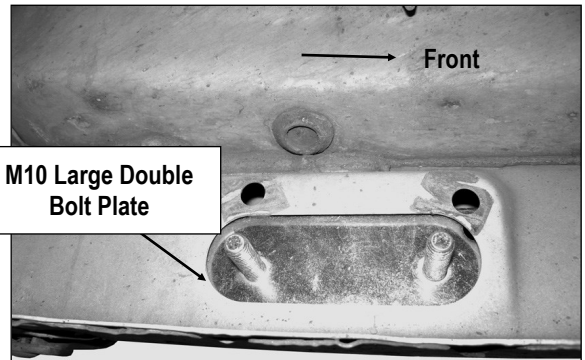
Start installing from the Driver Side Front Mounting Location of the vehicle. Remove the large oval rubber cover located on the inner side of the body panel if equipped, (Fig 1). Insert (1) M10 Large Double Bolt Plate into the oval hole, (Fig 2) and pull it back into position against the inner of the body panel, (Fig 3).



(Fig 1) Driver Side Front Mounting Location



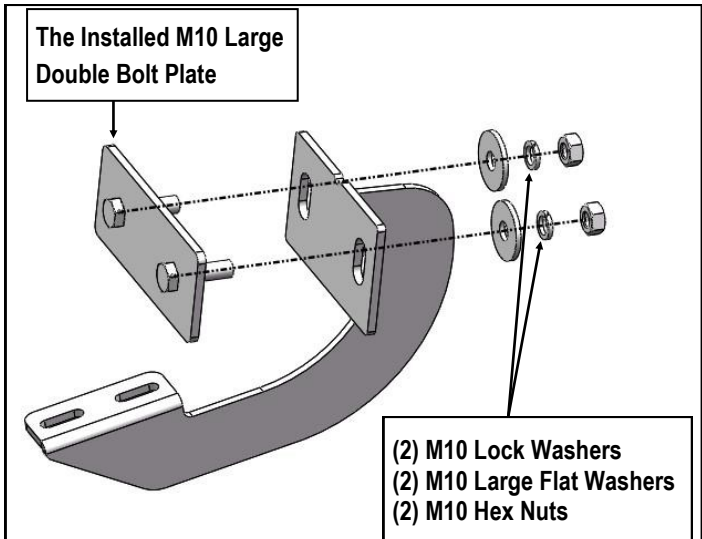
(Fig 2) M10 Large Double Bolt Plate Installation
(On Driver Side Front Mounting Location)



(Fig 3) M10 Large Double Bolt Plate Installed
(On Driver Side Front Mounting Location)

STEP 2

Select (1) Driver Front Mounting Bracket. Secure the Driver Front Mounting Bracket to the installed M10 Large Double Bolt Plate with (2) M10 Lock Washers, (2) M10 Large Flat Washers and (2) M10 Hex Nuts, (Fig 4). Do not fully tighten hardware at this time.



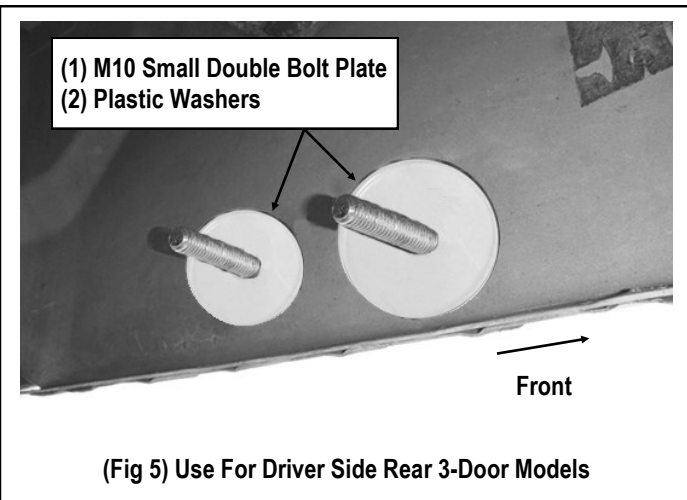
(Fig 4) Driver Front Mounting Bracket Installation

iBoard®

STEP 3

Move to Driver Side Rear Mounting Location. Repeat **Steps 1-2** for Driver Rear Mounting Bracket installation. Do not fully tighten hardware at this time.

NOTE: On 3-door models, insert the M10 Small Double Bolt Plate into the large, round hole and line up with the smaller round hole, (**Fig 5**). Then use the included Plastic Washers to hold the Bolt Plate in position and secure the Bracket as previously described in **Steps 1-2**.



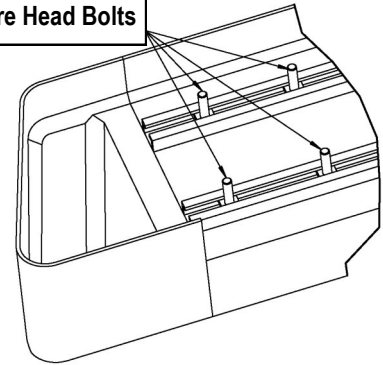
(Fig 5) Use For Driver Side Rear 3-Door Models

STEP 4

Once all (2) Mounting Brackets are installed. Select a Running Board. Slip (2) M6x1-20mm Square Head Bolts into each bottom channel (**Fig 6**). Carefully position the Running Board onto the (2) Mounting Brackets. Attach the Running Board to each Mounting Bracket with (2) M6x1-20mm Square Head Bolts, (2) M6 Large Flat Washers and (2) M6 Nylon Lock Nuts (**Fig 7**). Do not fully tighten at this time.

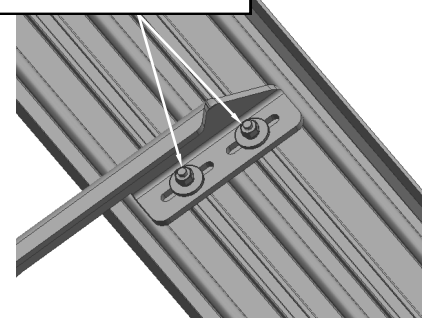
IMPORTANT: Do not slide the Running Board on the Brackets or the bottom surface of the board will be damaged.

M6X1-20mm Square Head Bolts



(Fig 6) Slip M6X1-20mm Square Head Bolts Into The Bottom Channels

(2) M6X1-20mm Square Head Bolts
(2) M6 Large Flat Washers
(2) M6 Nylon Lock Nuts



(Fig 7) Running Board Installed Onto Mounting Bracket

STEP 5

Level and adjust the Running Board and fully tighten all hardware.

Important: Please follow the recommended Tightening Torques shown in the table on page 1. Don't over tighten, or the nuts/bolts will be damaged.

iBoard®

STEP 6

Repeat **Steps 1-5** for the other side Running Board installation.
The installation is completed .

Attention

Do periodic inspections to the installation to make sure that all hardware is secure and tight.

In order to protect your bars/boards, please use only mild soap/non-abrasive products for cleaning.