



iBoard® by APS

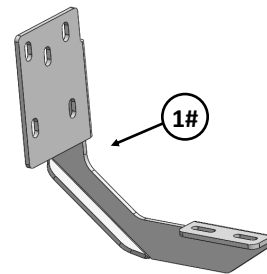
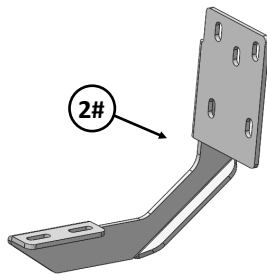
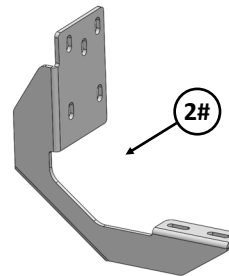
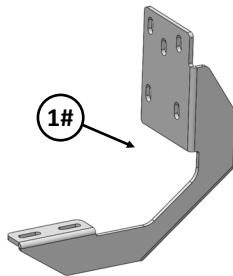
PART#: IB-R027

READ INSTRUCTIONS CAREFULLY BEFORE STARTING INSTALLATION. REMOVE CONTENTS FROM BOX AND VERIFY ALL PARTS ARE PRESENT. ASSISTANCE IS RECOMMENDED.

*ROCKER PANEL MOUNT
*NO DRILLING REQUIRED

Fastener Size	Tightening Torque (ft-lbs)	Required
6mm	6-7	√
8mm	16-18	√
10mm	31-32	X
12mm	56-58	X
14mm	92-94	X

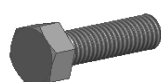
Front





Hardware Package A (For Bracket Installation)

Item	QTY	Description	Item	QTY	Description
1#	2	Driver Front / Passenger Rear Mounting Brackets	4#	12	M8 Large Flat Washers
2#	2	Passenger Front / Driver Rear Mounting Brackets	5#	12	M8 Lock Washers
3#	12	M8X1.25-30 Hex Bolts	6#	8	M8 Clip Nuts



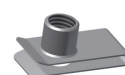
3 #



4 #



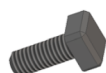
5 #



6 #

Hardware Package B (For Step Bar Installation)

Item	QTY	Description	Item	QTY	Description
1#	8	M6X1-20mm Square Head Bolts	3#	8	M6 Nylon Lock Nuts
2#	8	M6 Large Flat Washers			



1#



2#



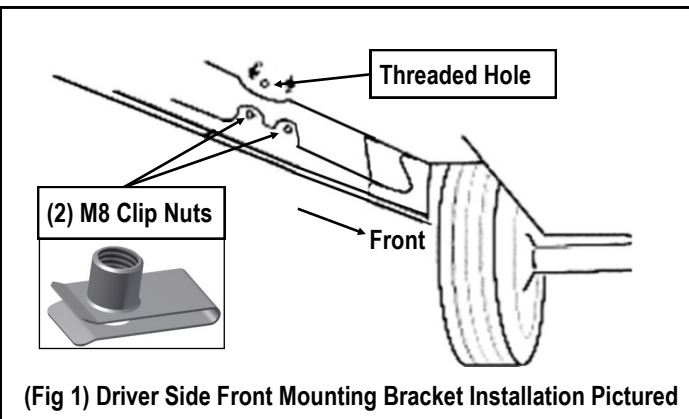
3#



STEP 1

Start installation from the driver side front of the vehicle. Locate on the backside of the rocker panel (3) mounting holes where the plastic fascia is cut out. Select (2) M8 Clip Nuts, line up the Clip Nuts with the holes. Locate a threaded hole above the clip nuts on the rocker panel. If equipped, remove plug to expose threaded hole.

NOTE: Threaded nut on Clip nut must face inside of the side panel, (Fig 1).



STEP 2

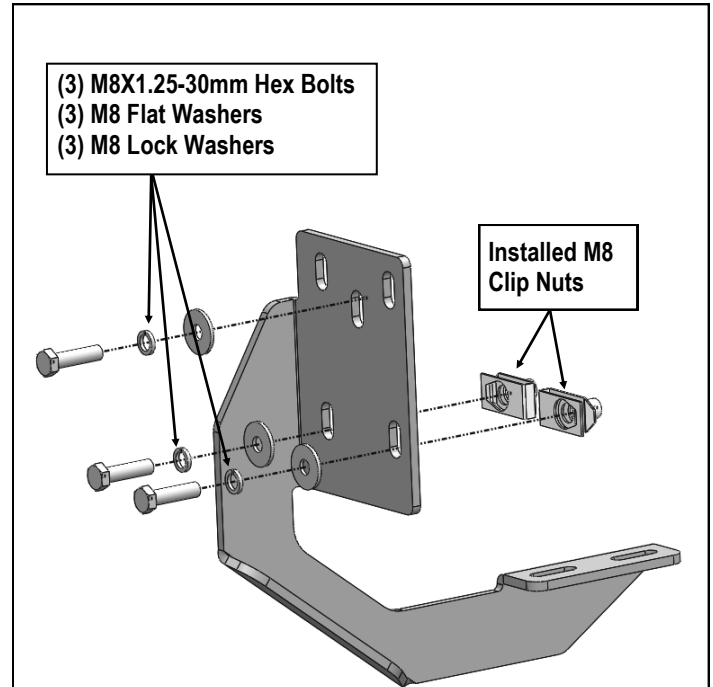
Attach the Driver Front Bracket to the installed M8 Clip Nuts with the included (2) M8X1.25-30mm Hex Bolts, (2) M8 Lock Washers and (2) M8 Large Flat Washers; to the threaded hole using (1) M8X1.25-30mm Hex Bolt, (1) M8 Lock Washers and (1) M8 Large Flat Washer, (Fig 2). Do not fully tighten at this time.

Note: Driver Front Mounting Bracket and Passenger Rear Mounting Bracket are universal.

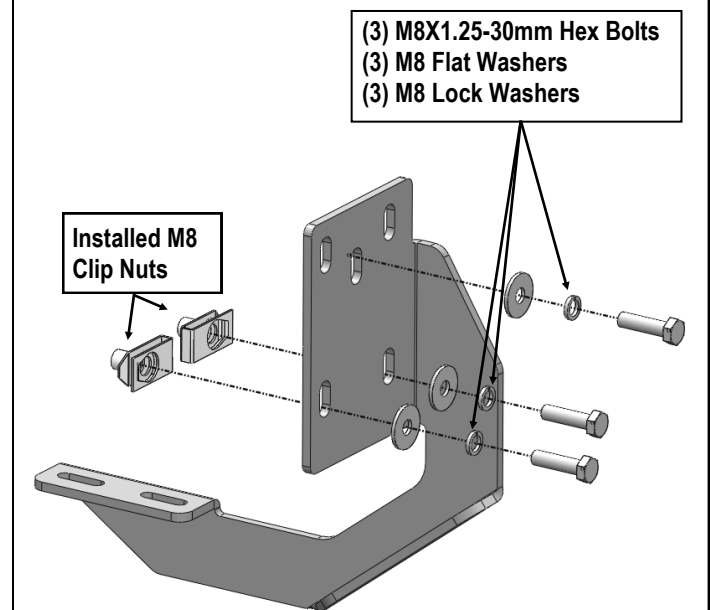
STEP 3

Next, move to the Driver Side Rear Mounting Location, select a Driver Rear Mounting Bracket, repeat **Steps 1-2** to install the rear bracket (Fig 3). Do not fully tighten hardware at this time.

Note: Driver Rear Mounting Bracket and Passenger Front Mounting Bracket are universal.



(Fig 2) Driver Front Mounting Bracket Installation



(Fig 3) Driver Rear Mounting Bracket Installation

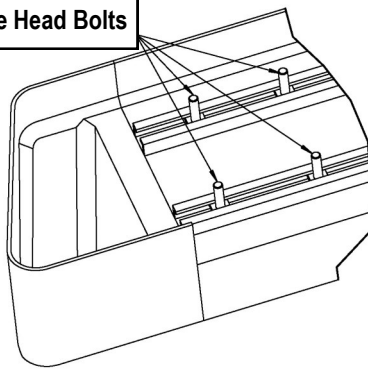


STEP 4

Once all (2) mounting brackets are installed. Select a Running Board. Slip (2) M6X1-20mm Square Head Bolts into each bottom channel (**Fig 4**). Carefully position the Running Board onto the (2) Mounting Brackets. Attach the Running Board to each Mounting Bracket with (2) M6X1-20mm Square Head Bolts, (2) M6 Large Flat Washers and (2) M6 Nylon Lock Nuts (**Fig 5**). Do not fully tighten at this time.

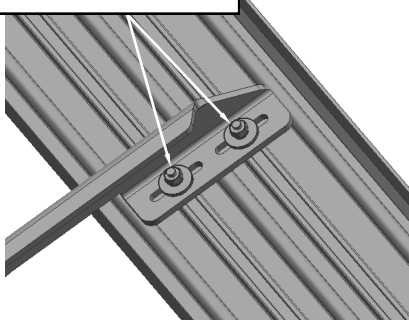
IMPORTANT: Do not slide the Running Board on the Brackets or the bottom surface of the board will be damaged.

M6X1-20mm Square Head Bolts



(Fig 4) Slip M6X1-20mm Square Head Bolts Into The Bottom Channels

(2) M6X1-20mm Square Head Bolts
(2) M6 Large Flat Washers
(2) M6 Nylon Lock Nuts



(Fig 5) Running Board Installed Onto Mounting Bracket

STEP 5

Level and adjust the Running Board and fully tighten all hardware.

Important: Please follow the recommended Tightening Torques shown in the table on page 1. Don't over tighten, or the nuts/bolts will be damaged.

STEP 6

Repeat **Steps 1-5** for the other side Running Board installation. The installation is completed .

Attention

Do periodic inspections to the installation to make sure that all hardware is secure and tight.

In order to protect your bars/boards, please use mild soap/non-abrasive products for cleaning only.