

iBoard®

iBoard® by APS

PART#: IB-R927

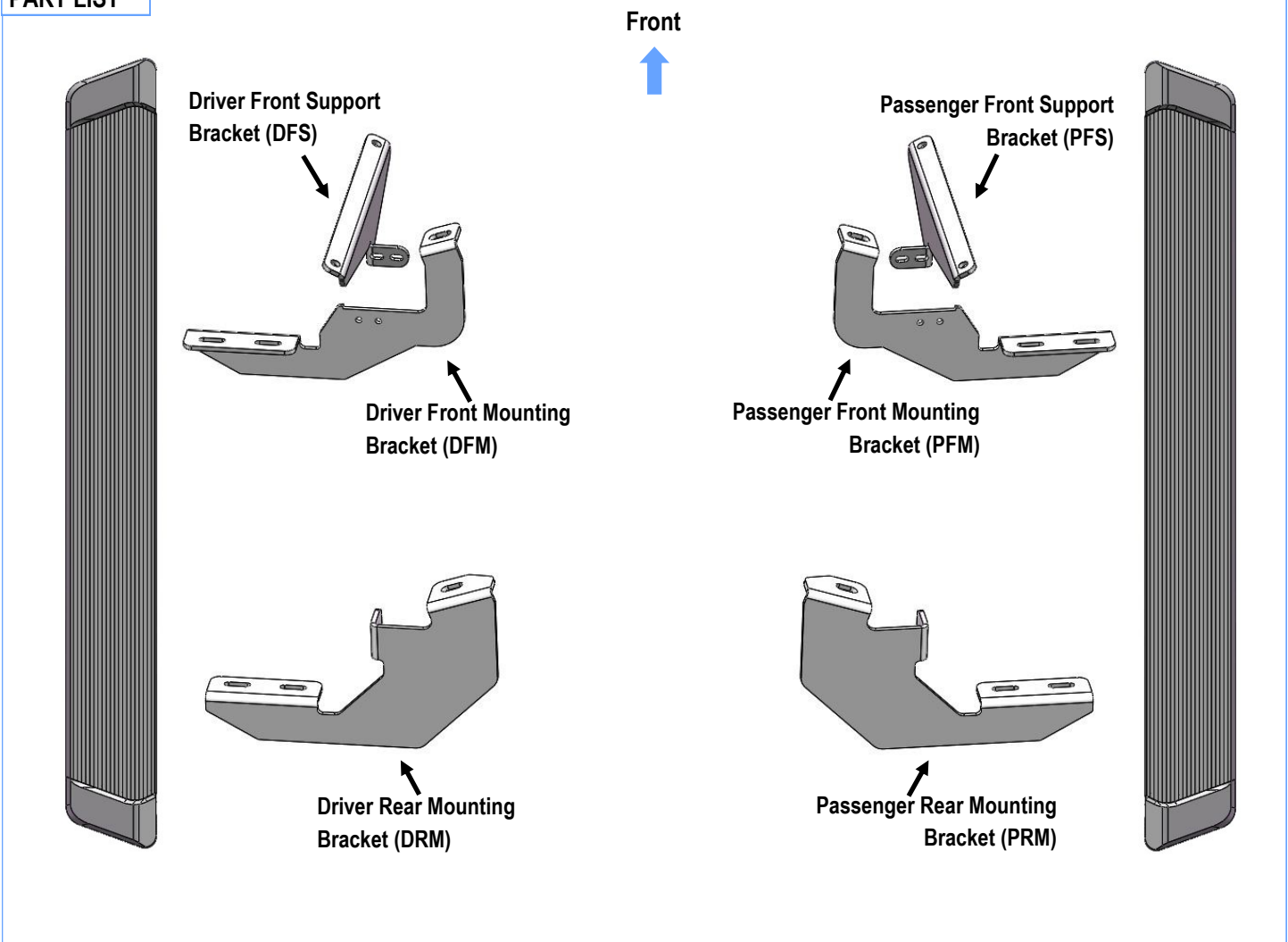
READ INSTRUCTIONS CAREFULLY BEFORE STARTING INSTALLATION. REMOVE CONTENTS FROM BOX AND VERIFY ALL PARTS ARE PRESENT. ASSISTANCE IS RECOMMENDED.

*ROCKER PANEL MOUNT

*DRILLING IS REQUIRED/ CUTTING MAYBE REQUIRED

Fastener Size	Tightening Torque (ft-lbs)	Required
6mm	6-7	√
8mm	16-18	√
10mm	31-32	√
12mm	56-58	X
14mm	92-94	X

PART LIST



Customer Support: info@iboardauto.com

iBoard®



STEP 1

Start installation from the driver side front of the vehicle. Unsecure the driver side rocker panel trim by releasing the plastic retainers along the bottom using a pair of small screwdrivers. With the doors open remove the (2) forward most retainers by sliding them down and off of the plastic rocker panel trim. (Figs 1 & 2).



(Fig 1) Release Plastic Retainers Along The Body Panel

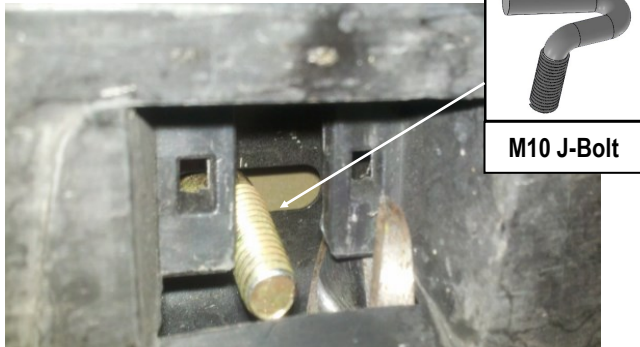


STEP 2

Insert (2) M10 J-Bolts into the (2) slots no longer covered by the plastic retainers.

Note: Slight trimming of the plastic is recommended to add clearance for nuts and washers. (Figs 3 & 4)

iBoard®



(Fig 3) Insert the M10 J-Bolt

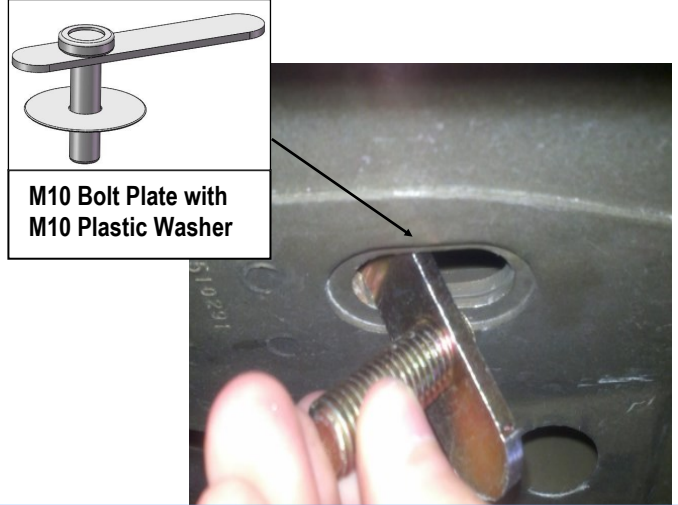


(Fig 4) M10 J-Bolt Installed
(on Driver Side Front Mounting Location)

STEP 3

Insert (1) M10 Bolt Plate with (1) M10 Plastic Washer into the front driver side slot under the vehicle (Fig 5).

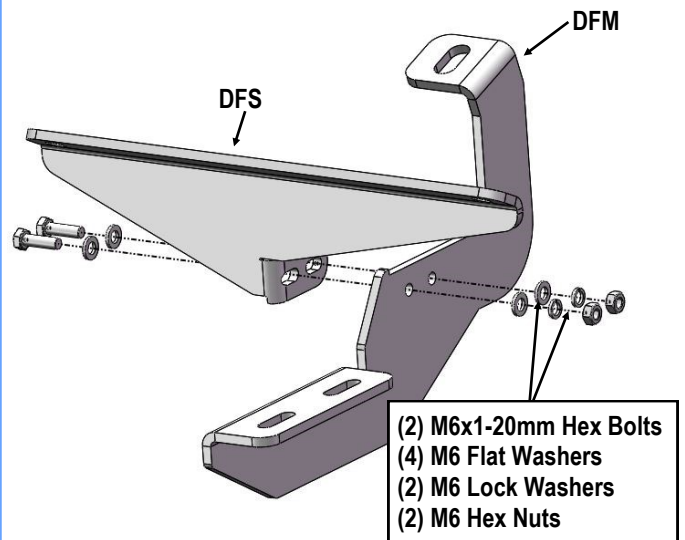
NOTE: Some models have additional sheet metal within the uni-body on the driver side front slot. Installation of bolt plate requires inserting the bolt plate threaded end first and pulling the bolt into an appropriate position with a magnet prior to installing the plastic washer.



(Fig 5) Insert (1) M10 Bolt Plate with (1) M10 Plastic Washer

STEP 4

Assemble (1) Driver Front Support Bracket (DFS) and (1) Driver Front Mounting Bracket (DFM) with (2) M6X1-20mm Hex Bolts, (4) M6 Flat Washers, (2) M6 Lock Washers and (2) M6 Hex Nuts, (Fig 6). Do not fully tighten hardware at this time.

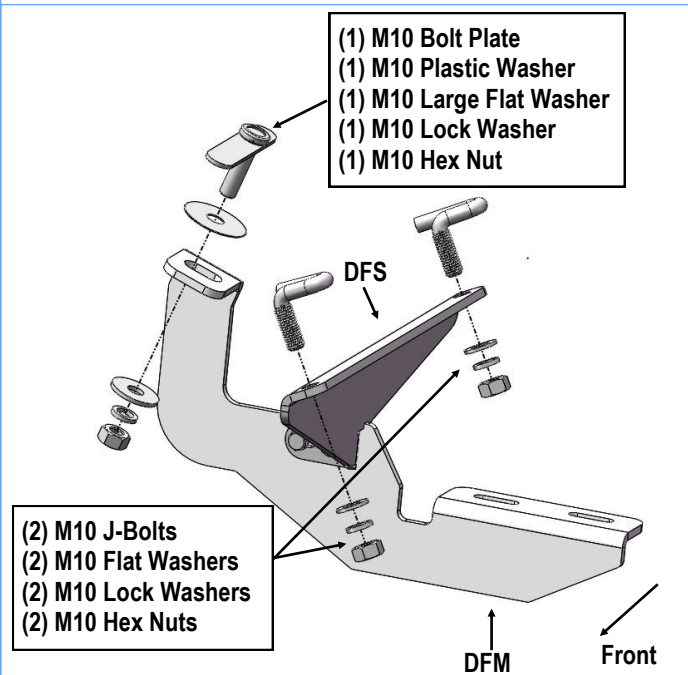


(Fig 6) Driver Front Mounting Bracket Assembly

iBoard®

STEP 5

Lift the rocker panel trim away from the body and attach the assembled Driver Side Front Mounting Bracket over the installed (2) M10 J-Bolts and M10 Bolt Plate with (1) M10 Large Flat Washer, (2) M10 Flat Washers, (3) M10 Lock Washers and (3) M10 Hex Nuts, (Fig 7). Do not fully tighten hardware at this time.

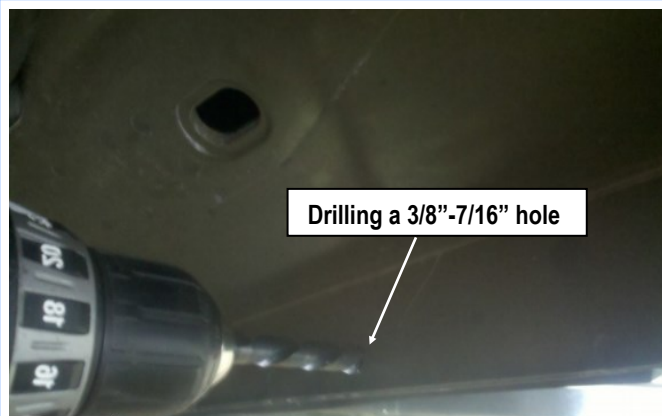


(Fig 7) Driver Front Mounting Bracket Installed

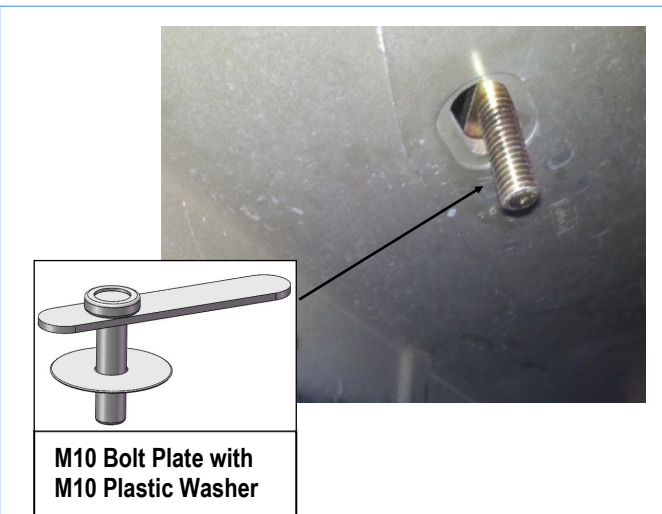
STEP 6

Move to the driver side rear mounting location of the vehicle. Insert (1) M10 Bolt Plate with (1) M10 Plastic Washer into the slot under the vehicle, (Fig 9).

Install the Driver Rear Mounting Bracket to the installed M10 Bolt Plate temporarily, attach the rear bracket to the pinch weld, use the bracket as a template, Centers punch and drill a 8-10mm hole on the pinch weld, (Figs 8).



(Fig 8) Center Punch and Drill a 10-12mm Hole



(Fig 9) Insert (1) M10 Bolt Plate with (1) M10 Plastic Washer

STEP 7

Attach (1) Driver Rear Mounting Bracket (DRM) to the installed M10 Bolt Plate and 8-10mm drilled hole with (1) M10 Large Flat Washer, (1) M10 Lock Washer and (1) M10 Hex Nut, (1) M8X1.25-25mm Hex Bolt, (2) M8 Large Flat Washers, (1) M8 Lock Washer and (1) M8 Hex Nut, (Figs 10 & 11). Do not fully tighten hardware at this time.

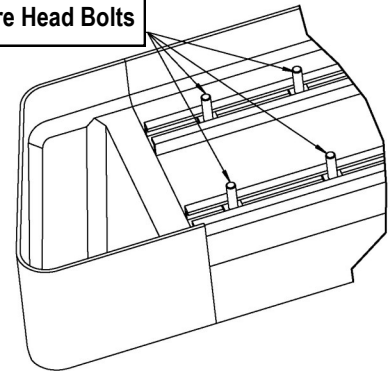
iBoard®

STEP 8

Select a Running Board. Slip (2) M6x1-20mm Square Head Bolts into each bottom channel (**Fig 12**). Carefully position the Running Board onto the (2) Mounting Brackets.

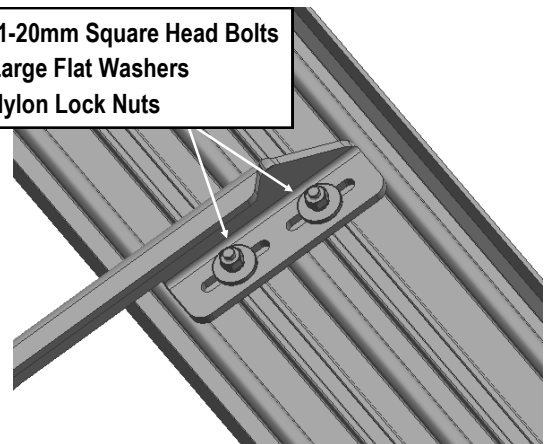
IMPORTANT: Do not slide the Running Board on the Brackets or the bottom surface of the board will be damaged. Attach the Running Board to each Mounting Bracket with (2) M6x1-20mm Square Head Bolts, (2) M6 Large Flat Washers and (2) M6 Nylon Lock Nuts (**Fig 13**). Do not fully tighten at this time.

M6X1-20mm Square Head Bolts



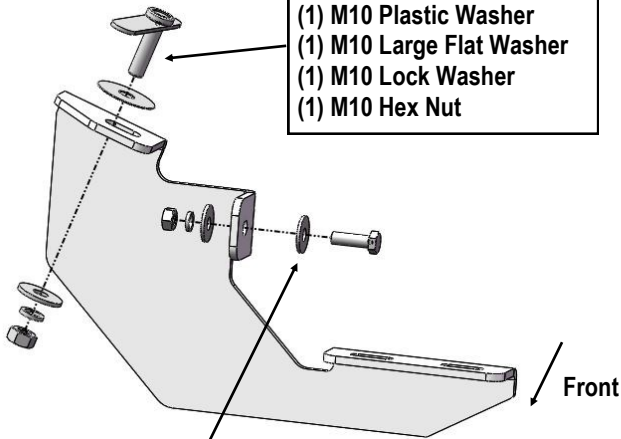
(Fig 12) Slip M6X1-20mm Square Head Bolts Into The Bottom Channels

(2) M6X1-20mm Square Head Bolts
(2) M6 Large Flat Washers
(2) M6 Nylon Lock Nuts



(Fig 13) Running Board Installed Onto Mounting Bracket

(1) M10 Bolt Plate
(1) M10 Plastic Washer
(1) M10 Large Flat Washer
(1) M10 Lock Washer
(1) M10 Hex Nut



(1) M8x1.25-25mm Hex Bolt
(2) M8 Large Flat Washers
(1) M8 Lock Washer
(1) M8 Hex Nut

(Fig 10) Driver Rear Mounting Bracket Installed

(1) M10 Bolt Plate
(1) M10 Plastic Washer
(1) M10 Large Flat Washer
(1) M10 Lock Washer
(1) M10 Hex Nut



(1) M8x1.25-25mm Hex Bolt
(2) M8 Large Flat Washers
(1) M8 Lock Washer
(1) M8 Hex Nut

(Fig 11) Driver Rear Mounting Bracket Installed

iBoard®

STEP 9

Level and adjust the Running Board and fully tighten all hardware.

Important: Please follow the recommended Tightening Torques shown in the table on page 1. Don't over tighten, or the nuts/bolts will be damaged.

STEP 10

Repeat **Steps 1-9** for the other side Running Board installation. The installation is completed.

Attention

Do periodic inspections to the installation to make sure that all hardware is secure and tight.

In order to protect your bars/boards, please use only mild soap/non-abrasive products for cleaning.