

# iBoard®

## iBoard® by APS

PART#: IB-R239&R313A\_B

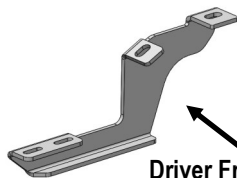
READ INSTRUCTIONS CAREFULLY BEFORE STARTING INSTALLATION. REMOVE CONTENTS FROM BOX AND VERIFY ALL PARTS ARE PRESENT. ASSISTANCE IS RECOMMENDED.

\*ROCKER PANEL MOUNT  
\*NO DRILLING REQUIRED

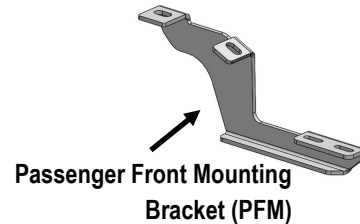
Fastener Size	Tightening Torque (ft-lbs)
6mm	6-7
8mm	16-18
10mm	31-32
12mm	56-58
14mm	92-94

### PART LIST

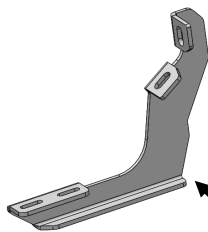
Front



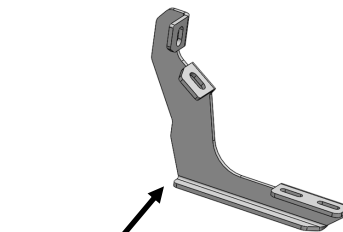
Driver Front Mounting  
Bracket (DFM)



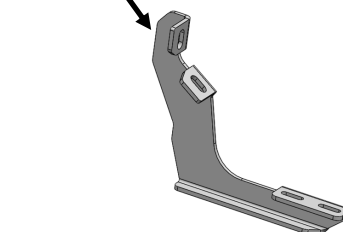
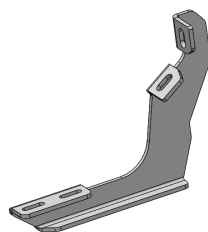
Passenger Front Mounting  
Bracket (PFM)



Driver Center/Rear Mounting  
Bracket (DCM/DRM)



Passenger Center/Rear  
Mounting Bracket (PCM/PRM)



Customer Support: [info@iboardauto.com](mailto:info@iboardauto.com)

# iBoard®



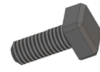
M10X1.5-  
25mm Hex Bolt



M10 Large Flat  
Washer



M10 Lock Washer



M6X1-20mm  
Square Head Bolt



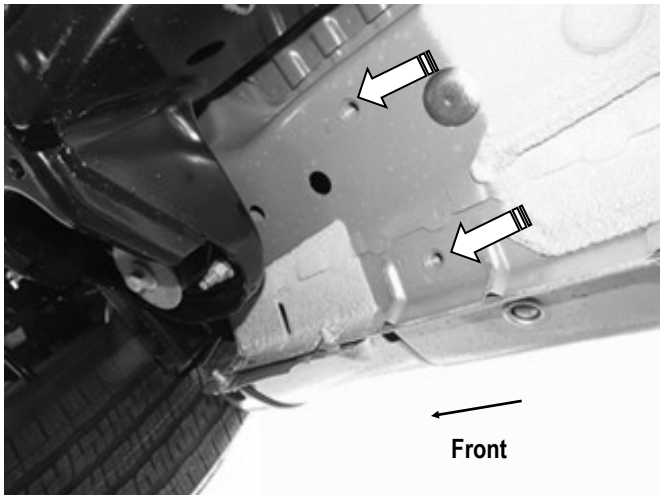
M6 Large Flat  
Washer



M6X1 Nylon  
Lock Nut

## STEP 1

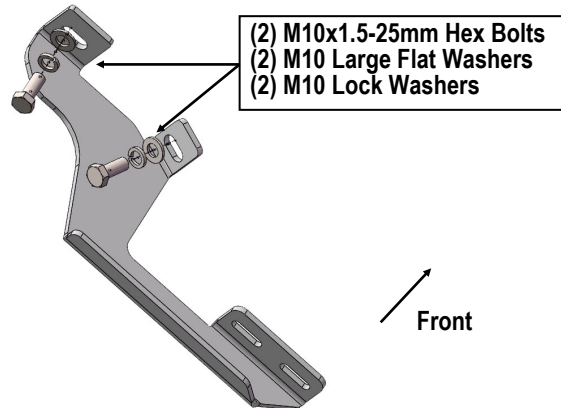
Start installation from the Passenger side front of the vehicle, locate the threaded mounting holes on the rocker panel, **(Fig 1)**. Remove the plastic plugs covering the mounting holes.



(Fig 1) Passenger Side Front Mounting Location

## STEP 2

Select Passenger Front Mounting Bracket. Attach to Passenger side front mounting location with (2) M10x1.5-25mm Hex Bolts, (2) M10 Large Flat Washers and (2) M10 Lock Washers **(Fig 2)**. Do not fully tighten hardware at this time.

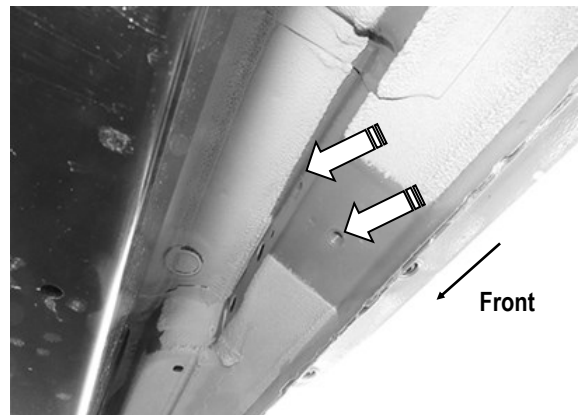


(Fig 2) Passenger Front Mounting Bracket Installed

## STEP 3

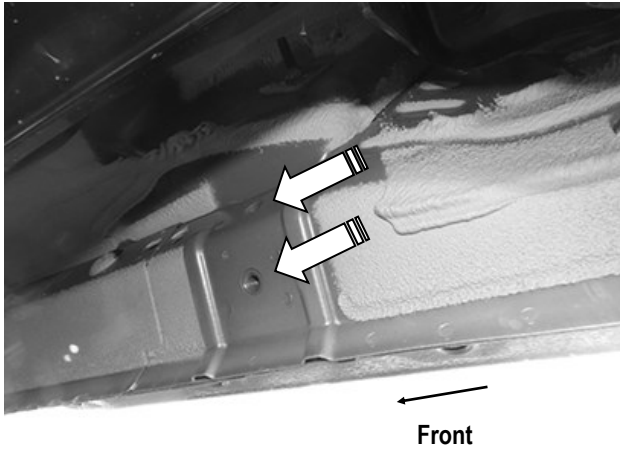
Move to center & rear mounting locations, **(Fig 3-4)**. Repeat **Steps 1-2** to install Passenger Center & Rear Mounting Brackets.

**Note:** Passenger Center & Rear Mounting Bracket are universal .



(Fig 3) Passenger Side Center Mounting Location

# iBoard®



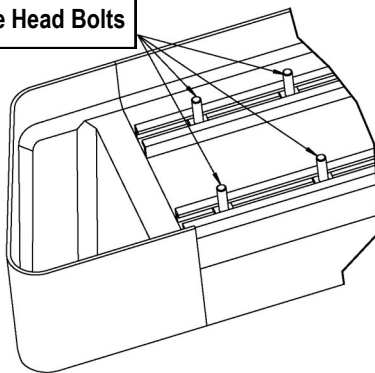
(Fig 4) Passenger Side Rear Mounting Location

## STEP 4

Select a Running Board. Slip (3) M6x1-20mm Square Head Bolts into each bottom channel (Fig 5). Carefully position the Running Board onto the (3) Mounting Brackets.

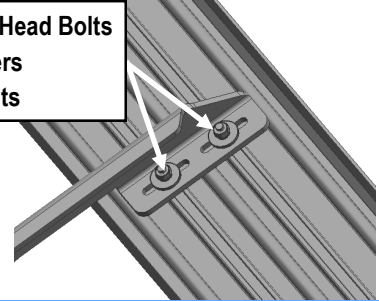
**IMPORTANT:** Do not slide the Running Board on the Brackets or the bottom surface of the board will be damaged. Attach the Running Board to each Mounting Bracket with (2) M6x1-20mm Square Head Bolts, (2) M6 Large Flat Washers and (2) M6 X1 Nylon Lock Nuts (Fig 6). Do not fully tighten at this time.

M6X1-20mm Square Head Bolts



(Fig 5) Slip M6X1-20mm Square Head Bolts Into The Bottom Channels

(2) M6X1-20mm Square Head Bolts  
(2) M6 Large Flat Washers  
(2) M6X1 Nylon Lock Nuts



(Fig 6) Running Board Installed Onto Mounting Bracket

## STEP 5

Level and adjust the Running Board and fully tighten all hardware. **Important:** Please follow the recommended Tightening Torques shown in the table on page 1. Don't over tighten, or the nuts/bolts will be damaged.

## STEP 6

Repeat **Steps 1-5** for the other side Running Board installation. The installation is completed (Fig 7).



(Fig 7) Installation Completed

### Attention

Do periodic inspections to the installation to make sure that all hardware is secure and tight.

In order to protect your bars/boards, please use only mild soap/non-abrasive products for cleaning.