

iBoard®

iBoard® by APS

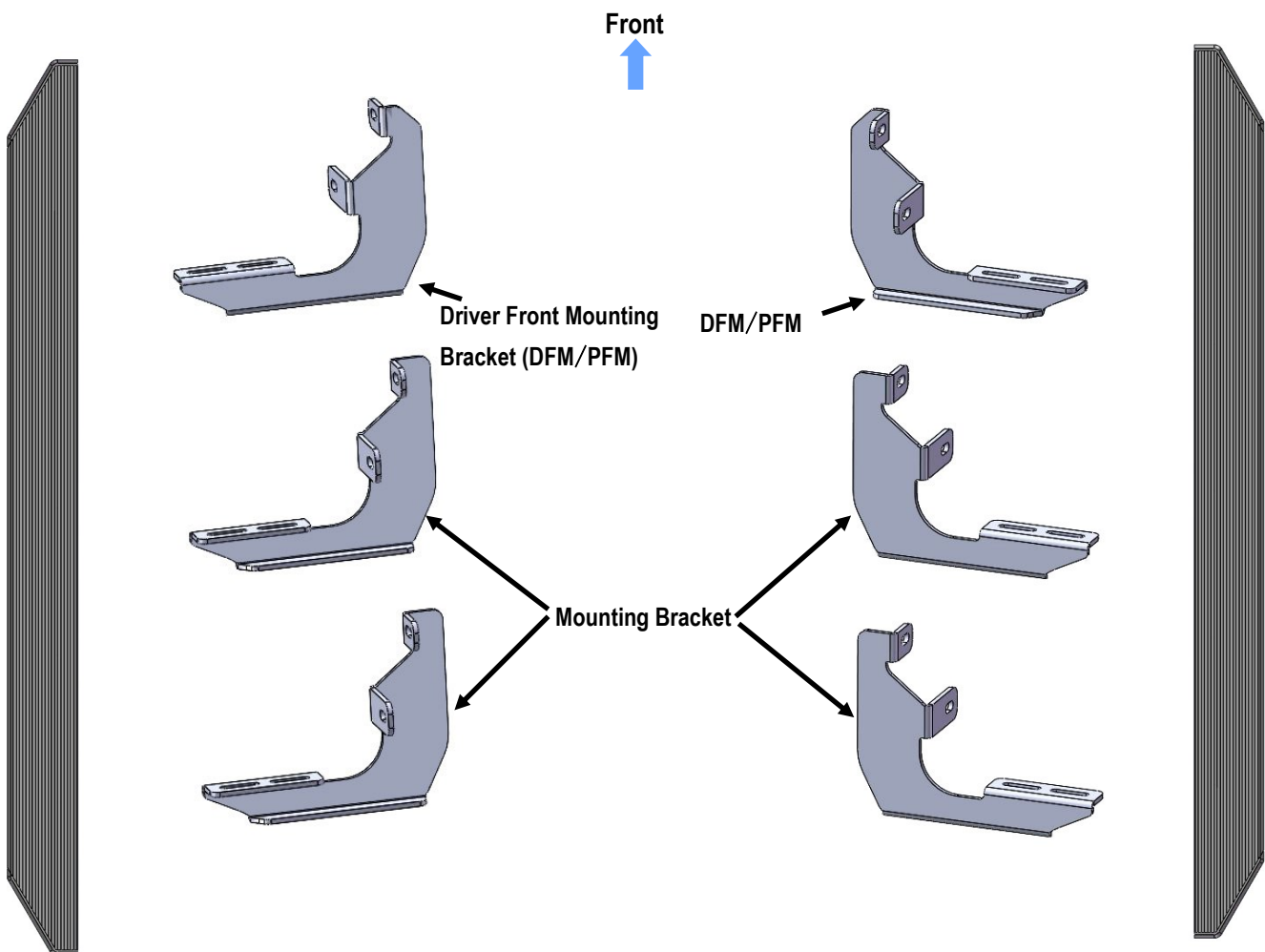
PART#: IB-R234H_Y

READ INSTRUCTIONS CAREFULLY BEFORE STARTING INSTALLATION. REMOVE CONTENTS FROM BOX AND VERIFY ALL PARTS ARE PRESENT. ASSISTANCE IS RECOMMENDED.

*ROCKER PANEL MOUNT
*NO DRILLING REQUIRED

| Fastener Size | Tightening Torque (ft-lbs) |
|---------------|----------------------------|
| 6mm | 6-7 |
| 8mm | 16-18 |
| 10mm | 31-32 |
| 12mm | 56-58 |
| 14mm | 92-94 |

PART LIST



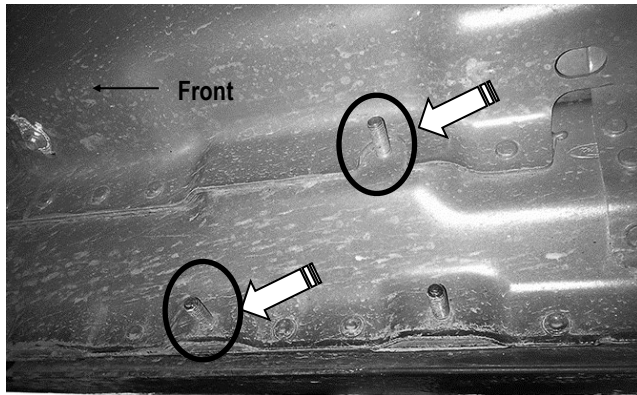
Customer Support: info@iboardauto.com

iBoard®



STEP 1

Start installation from the passenger side front of the vehicle. Locate the Passenger Side Front Mounting Location along the inner side of the body panel, (Fig 1).



(Fig 1) Passenger Side Front Mounting Location

STEP 2

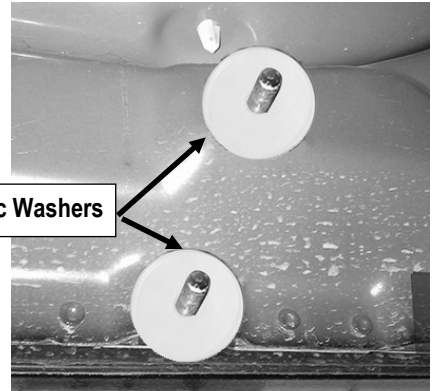
Thread (1) M8 Plastic Washer over each of the (2) factory mounting studs on the body panel, (Fig 2).

IMPORTANT: The M8 Plastic Washers are designed to prevent corrosion between the aluminum body panel and the steel Mounting Brackets.

Note: Do not install the Brackets without the Plastic Washers.

Rear
→

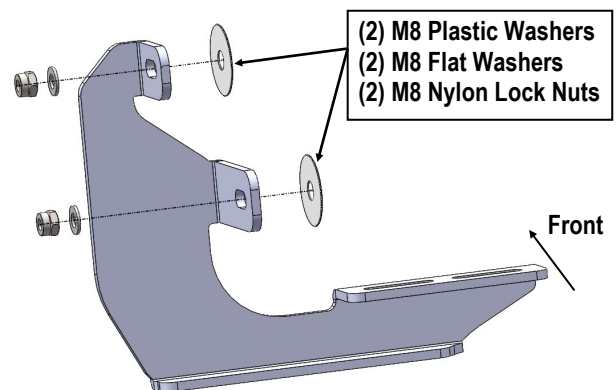
(2) M8 Plastic Washers



(Fig 2) M8 Plastic Washers Installed

STEP 3

Select (1) Passenger Front Mounting Bracket (DFM/PFM). Attach the Passenger Front Mounting Bracket to the (2) factory studs with (2) M8 Flat Washers and (2) M8 Nylon Lock Nuts, (Fig 3). Do not fully tighten hardware at this time.



(Fig 3) Passenger Front Mounting Bracket (DFM/PFM) Installation

iBoard®

STEP 4

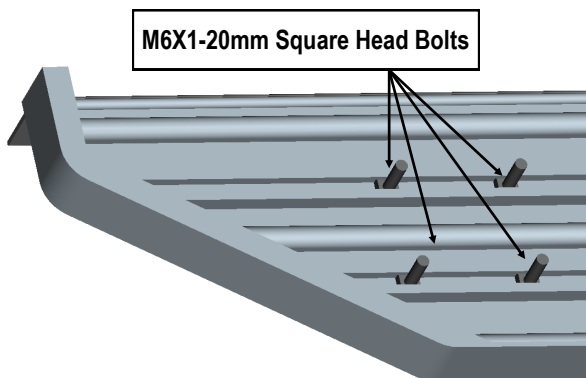
Move to the Passenger Side Center & Rear Locations of the vehicle. Select (2) Mounting Brackets. Repeat **Steps 1—3** to install the passenger side Center & Rear Mounting Brackets.

NOTE: All (4) Mounting Brackets are universal.

STEP 5

Select a Running Board. Slip (3) M6x1-20mm Square Head Bolts into each bottom channel (**Fig 4**). Carefully position the Running Board onto the (3) Mounting Brackets.

IMPORTANT: Do not slide the Running Board on the Brackets or the bottom surface of the board will be damaged. Attach the Running Board to each Mounting Bracket with (2) M6x1-20mm Square Head Bolts, (2) M6 Large Flat Washers and (2) M6 X1 Nylon Lock Nuts (**Fig 5**). Do not fully tighten at this time.

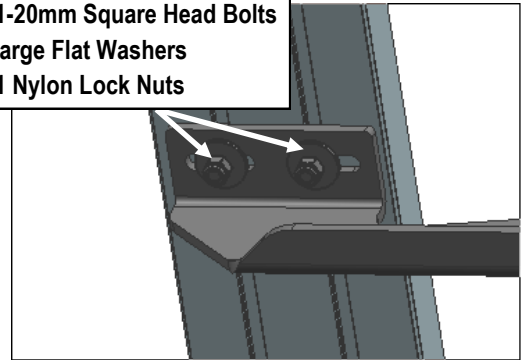


(Fig 4) Slip (3) M6X1-20mm Square Head Bolts Into Each Bottom Channel

STEP 6

Level and adjust the Running Board and fully tighten all hardware.

(2) M6X1-20mm Square Head Bolts
(2) M6 Large Flat Washers
(2) M6X1 Nylon Lock Nuts



(Fig 5) Running Board Installed Onto Mounting Bracket

STEP 7

Repeat **Steps 1-6** for other side Running Board installation. The installation is completed (**Fig 6**).



(Fig 6) Installation Completed

Attention

Do periodic inspections to the installation to make sure that all hardware is secure and tight.

In order to protect your bars/boards, please use only mild soap/non-abrasive products for cleaning.