

iBoard®

iBoard® by APS

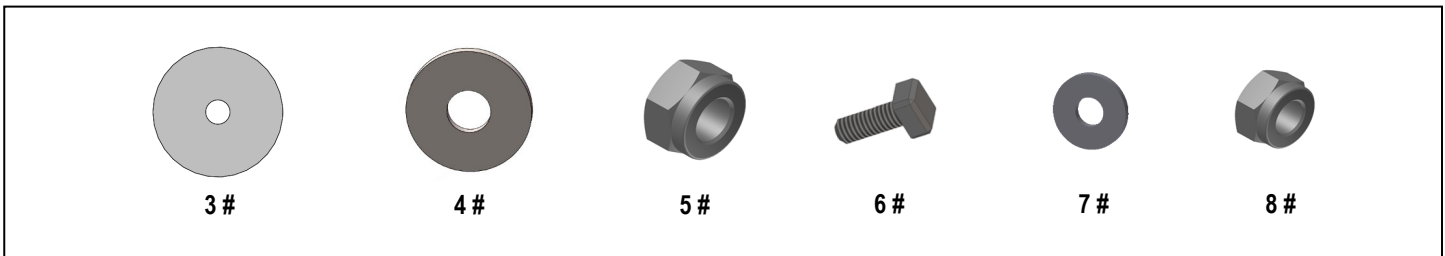
PART#: IB-R234

READ INSTRUCTIONS CAREFULLY BEFORE STARTING INSTALLATION. REMOVE CONTENTS FROM BOX AND VERIFY ALL PARTS ARE PRESENT. ASSISTANCE IS RECOMMENDED.

*ROCKER PANEL MOUNT
*NO DRILLING REQUIRED

Fastener Size	Tightening Torque (ft-lbs)	Required
6mm	6-7	√
8mm	16-18	√
10mm	31-32	X
12mm	56-58	X
14mm	92-94	X

Item	QTY	Description	Item	QTY	Description
1#	2	Driver / Passenger Front Mounting Brackets	5#	12	M8 Nylon Lock Nuts
2#	4	Mounting Brackets	6#	12	M6X1-20mm Square Head Bolts
3#	12	M8 Plastic Washers	7#	12	M6 Large Flat Washers
4#	12	M8 Flat Washers	8#	12	M6 Nylon Lock Nuts

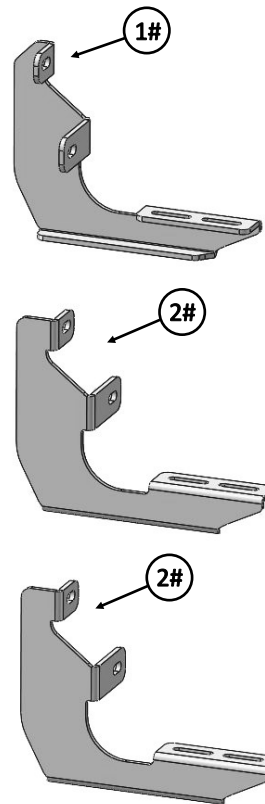
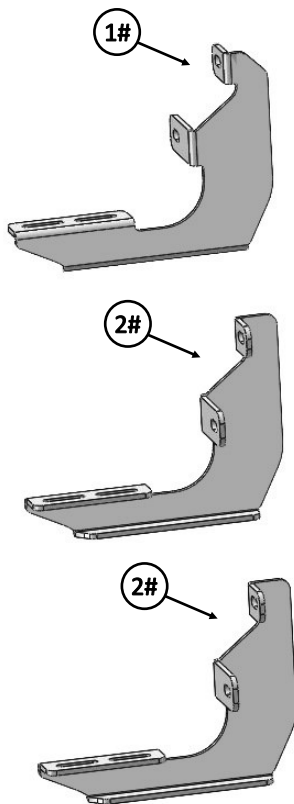


iBoard®

Driver

Front

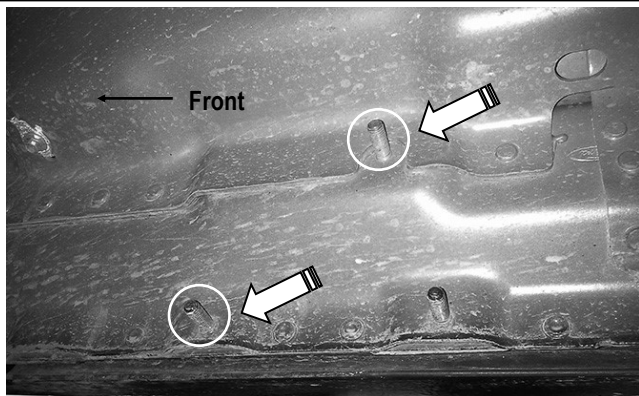
Passenger



iBoard®

STEP 1

Start installation from the passenger side front of the vehicle. Locate the Passenger Side Front Mounting Location along the inner side of the body panel, **(Fig 1)**.



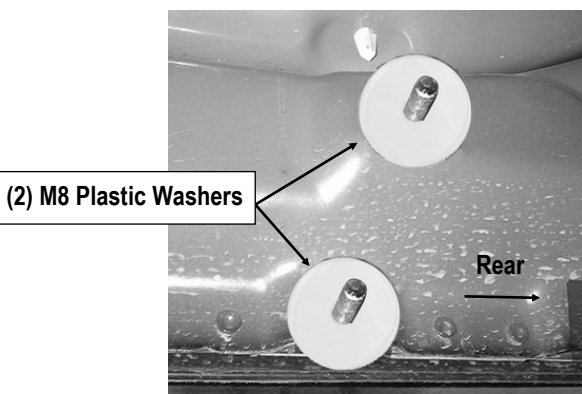
(Fig 1) Passenger Side Front Mounting Location

STEP 2

Thread (1) M8 Plastic Washer over each of the (2) factory mounting studs on the body panel, **(Fig 2)**.

IMPORTANT: The M8 Plastic Washers are designed to prevent corrosion between the aluminum body panel and the steel Mounting Brackets.

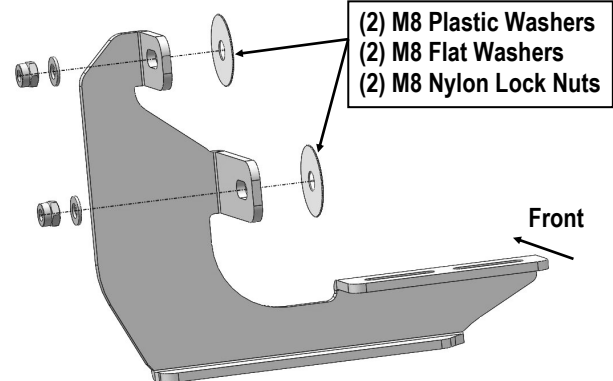
Note: Do not install the Brackets without the Plastic Washers.



(Fig 2) M8 Plastic Washers Installed

STEP 3

Select (1) Passenger Front Mounting Bracket. Attach the Passenger Front Mounting Bracket to the (2) factory studs with (2) M8 Flat Washers and (2) M8 Nylon Lock Nuts, **(Fig 3)**. Do not fully tighten hardware at this time.



(Fig 3) Passenger Front Mounting Bracket Installation

STEP 4

Move to the Passenger Side Center & Rear Locations of the vehicle. Select (2) Mounting Brackets. Repeat **Steps 1—3** to install the passenger side Center & Rear Mounting Brackets.

NOTE: All (4) Mounting Brackets are universal.

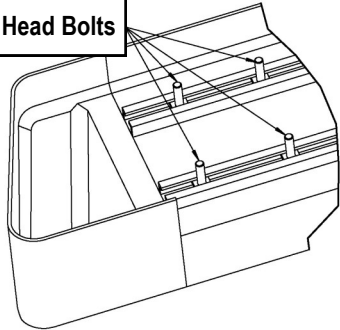
STEP 5

Select a Running Board. Slip (3) M6X1-20mm Square Head Bolts into each bottom channel **(Fig 4)**. Carefully position the Running Board onto the (3) Mounting Brackets.

IMPORTANT: Do not slide the Running Board on the Brackets or the bottom surface of the board will be damaged. Attach the Running Board to each Mounting Brackets with (2) M6x1-20mm Square Head Bolts, (2) M6 Large Flat Washers and (2) M6 X1 Nylon Lock Nuts **(Fig 5)**. Do not fully tighten at this time.

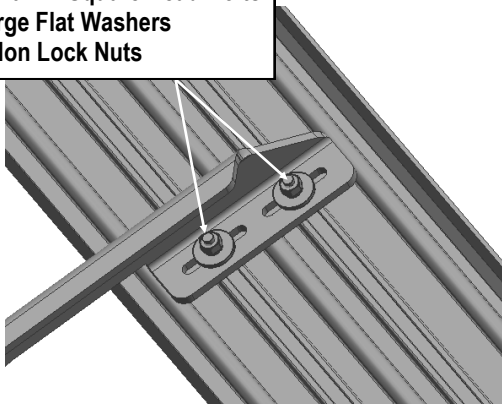
iBoard®

M6X1-20mm Square Head Bolts



(Fig 4) Slip M6X1-20mm Square Head Bolts Into The Bottom Channels

(2) M6X1-20mm Square Head Bolts
(2) M6 Large Flat Washers
(2) M6 Nylon Lock Nuts



(Fig 5) Running Board Installed Onto Mounting Bracket

STEP 6

Level and adjust the Running Board and fully tighten all hardware.

Important: Please follow the recommended Tightening Torques shown in the table on page 1. Don't over tighten, or the nuts/bolts will be damaged.

STEP 7

Repeat **Steps 1-6** for the other side Running Board installation. The installation is completed.

Attention

Do periodic inspections to the installation to make sure that all hardware is secure and tight.

In order to protect your bars/boards, please use only mild soap/non-abrasive products for cleaning.