



iBoard® by APS

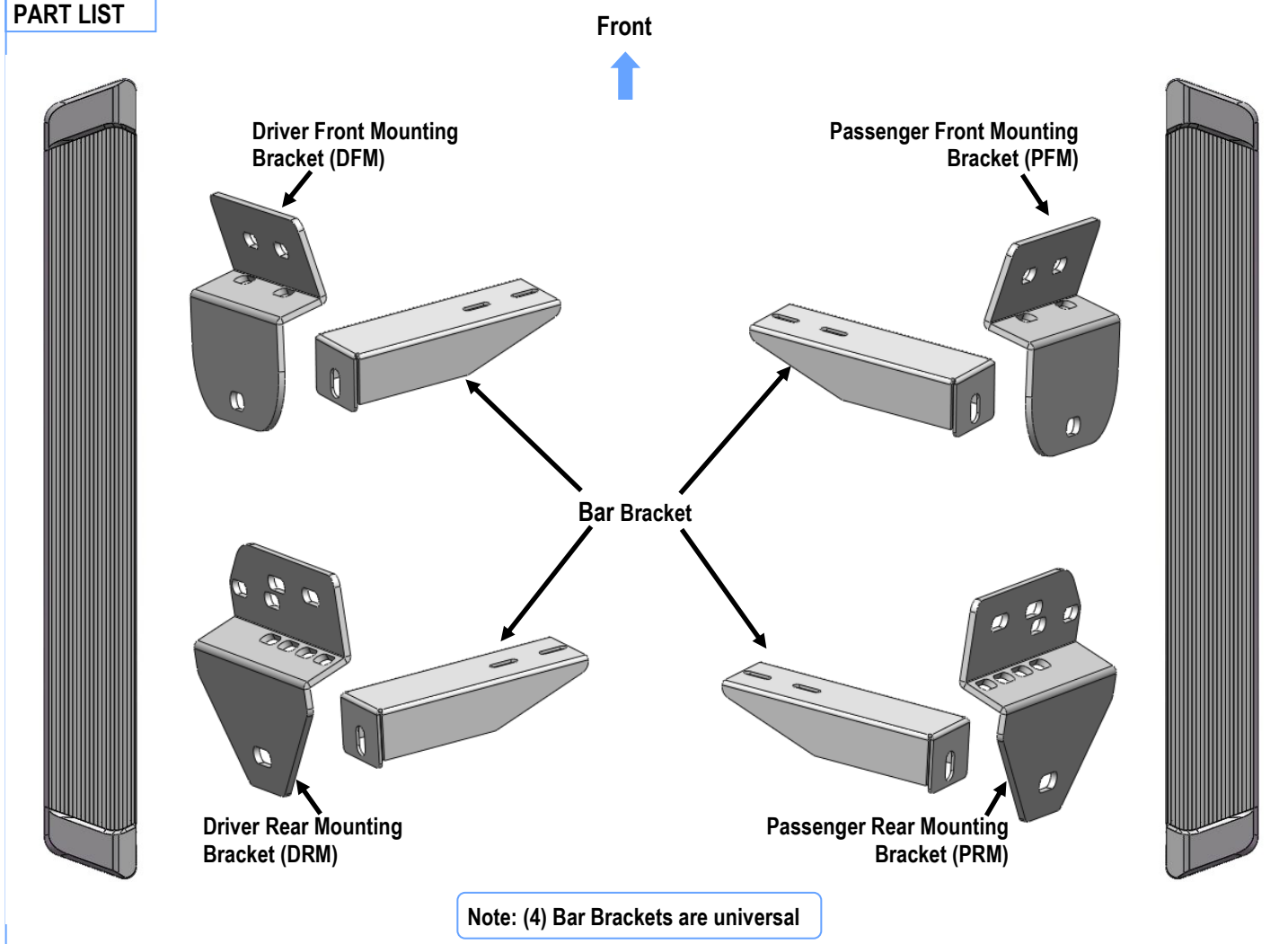
PART#: IB-R211

READ INSTRUCTIONS CAREFULLY BEFORE STARTING INSTALLATION. REMOVE CONTENTS FROM BOX AND VERIFY ALL PARTS ARE PRESENT. ASSISTANCE IS RECOMMENDED.

*ROCKER PANEL MOUNT
*NO DRILLING REQUIRED

Fastener Size	Tightening Torque (ft-lbs)	Required
6mm	6-7	√
8mm	16-18	√
10mm	31-32	√
12mm	56-58	√
14mm	92-94	X

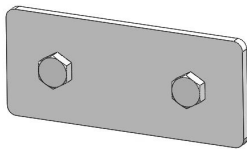
PART LIST



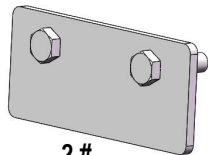


Hardware Package A (For Bracket Installation)

Item	QTY	Description	Item	QTY	Description
1#	2	M10 Double Bolt Plates (For Rear)	8#	16	M8 Flat Washers
2#	2	M10 Offset Double Bolt Plates (For Front)	9#	8	M8 Lock Washers
3#	4	M12X1.75-35mm Hex Bolts	10#	8	M8 Hex Nuts
4#	8	M12 Large Flat Washers	11#	8	M10 Large Flat Washers
5#	4	M12 Lock Washers	12#	8	M10 Lock Washers
6#	4	M12X1.75 Hex Nuts	13#	8	M10 Hex Nuts
7#	8	M8X1.25-25mm Hex Bolts			



1 #



2 #



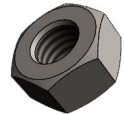
3 #



4 #



5 #



6 #



7 #



8 #



9 #



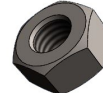
10 #



11 #



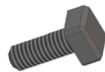
12 #



13 #

Hardware Package B (For Step Bar Installation)

Item	QTY	Description	Item	QTY	Description
1#	8	M6X1-20mm Square Head Bolts	3#	8	M6 Nylon Lock Nuts
2#	8	M6 Large Flat Washers			



1#



2#

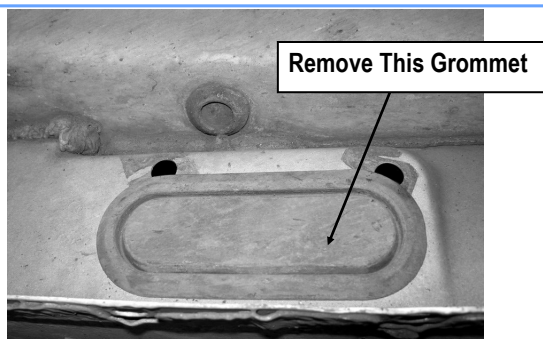


3#

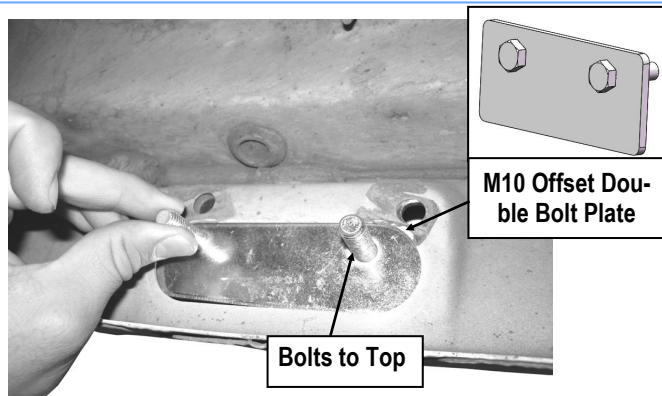


STEP 1

Start installation from the driver side front of the vehicle. Remove the oval grommet located on the inside of the rocker panel, **(Fig 1)**. Insert (1) M10 Offset Double Bolt Plate, (with threaded studs toward the top), into the factory oval hole, **(Fig 2)**.



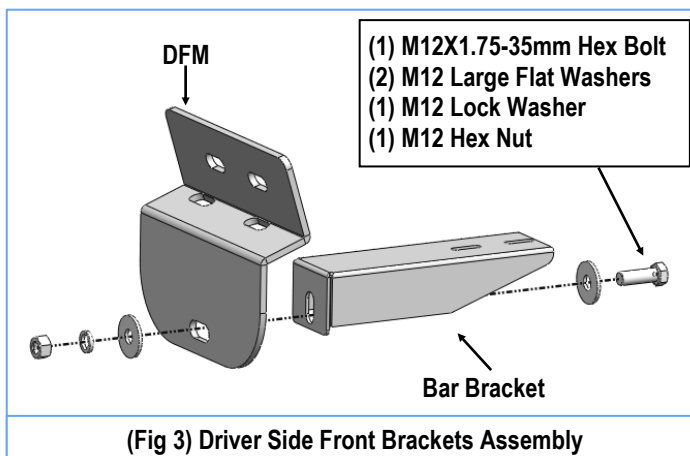
(Fig 1) Driver Side Front Mounting Location



(Fig 2) Insert (1) M10 Offset Double Bolt Plate

STEP 2

Assemble the Driver Front Mounting Bracket (**DFM**) and the Bar Bracket with (1) M12X1.75-35mm Hex Bolt, (2) M12 Large Flat Washers, (1) M12 Lock Washer and (1) M12 Hex Nut, **(Fig 3)**. Do not fully tighten hardware at this time.



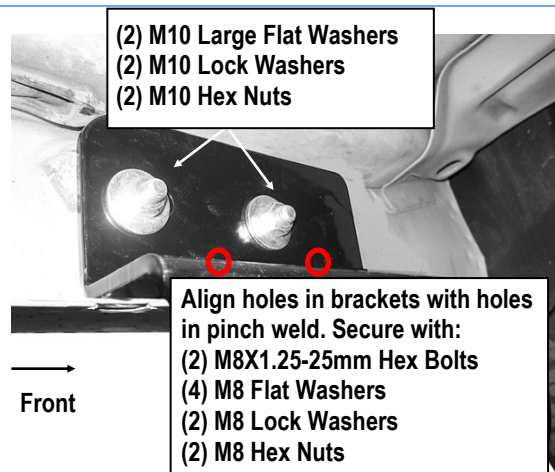
(Fig 3) Driver Side Front Brackets Assembly

STEP 3

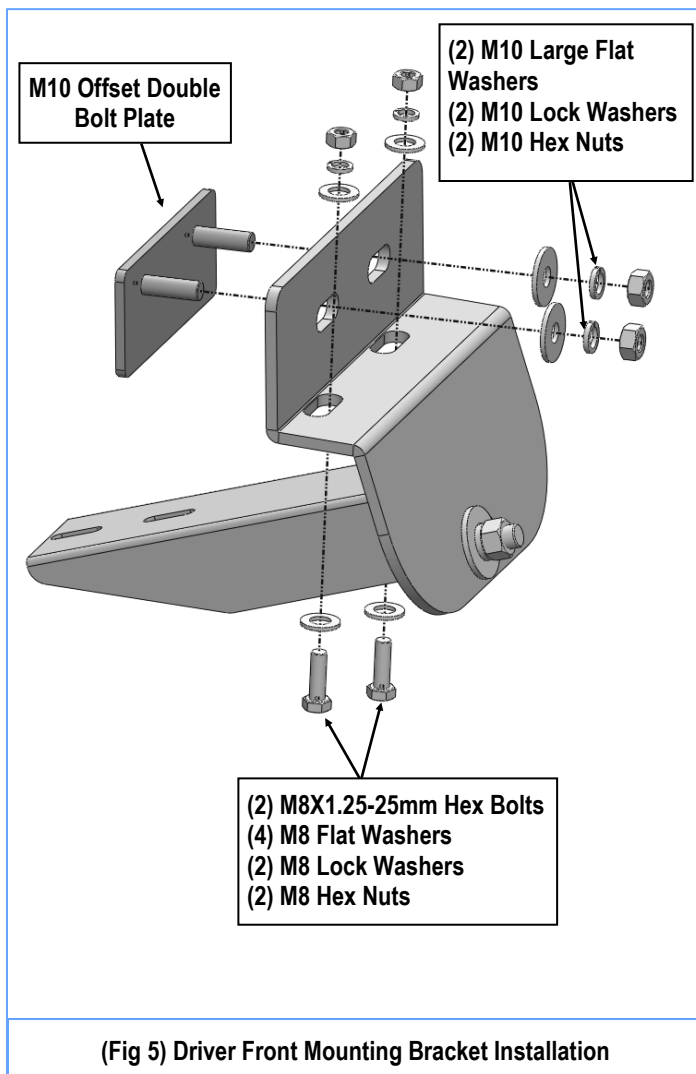
Select the Driver Front Mounting Bracket, attach to the M10 Offset Double Bolt Plate with (2) M10 Large Flat Washers, (2) M10 Lock Washers and (2) M10 Hex Nuts, **(Figs 4 & 5)**. Do not fully tighten hardware at this time.

Note: Hold the Double Bolt Plate from one side while you position and attach the Mounting Bracket to the opposite side.

Align the Driver Front Mounting Bracket with holes in the pinch weld. Attach the Mounting Bracket to the pinch weld using the included (2) M8X1.25-25mm Hex Bolts, (4) M8 Flat Washers, (2) M8 Lock Washers and (2) M8 Hex Nuts, **(Fig 5)**. Do not fully tighten hardware at this time.

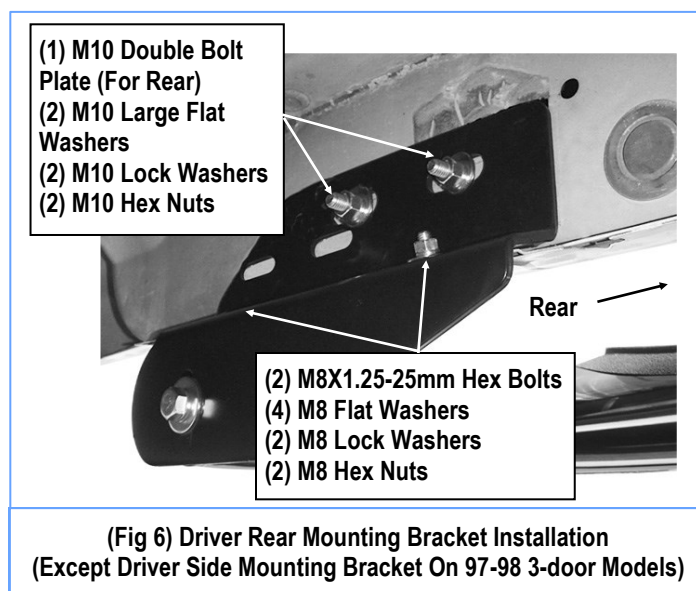


(Fig 4) Driver Front Mounting Bracket Installation



STEP 4

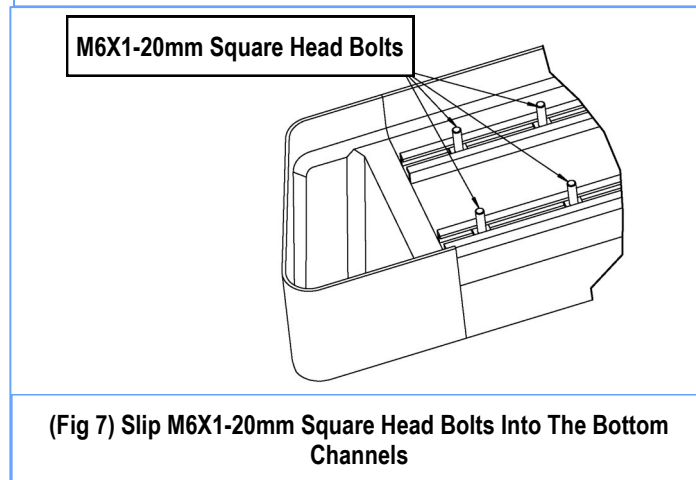
Moving to the driver side rear of the vehicle, use (1) M10 Double Bolt Plate (For Rear) to install the Driver Rear Mounting Bracket (**DRM**). Repeat **Steps 1-4** for the Driver Rear Mounting Bracket and the Bar Bracket assembly and installation, (**Fig 6**). Do not fully tighten hardware at this time.



STEP 5

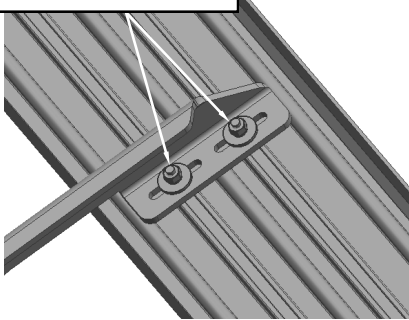
Once all (2) mounting brackets are installed. Select a Running Board. Slip (2) M6X1-20mm Square Head Bolts into each bottom channel (**Fig 7**). Carefully position the Running Board onto the (2) Mounting Brackets. Attach the Running Board to each Mounting Bracket with (2) M6X1-20mm Square Head Bolts, (2) M6 Large Flat Washers and (2) M6 Nylon Lock Nuts (**Fig 8**). Do not fully tighten at this time.

IMPORTANT: Do not slide the Running Board on the Brackets or the bottom surface of the board will be damaged.





- (2) M6X1-20mm Square Head Bolts
- (2) M6 Large Flat Washers
- (2) M6 Nylon Lock Nuts



(Fig 8) Running Board Installed Onto Mounting Bracket

STEP 6

Level and adjust the Running Board and fully tighten all hardware.

Important: Please follow the recommended Tightening Torques shown in the table on page 1. Don't over tighten, or the nuts/bolts will be damaged.

STEP 7

Repeat **Steps 1-6** for the other side Running Board installation. The installation is completed.

Attention

Do periodic inspections to the installation to make sure that all hardware is secure and tight.

In order to protect your bars/boards, please use mild soap/non-abrasive products for cleaning only.