

iBoard®

iBoard® by APS

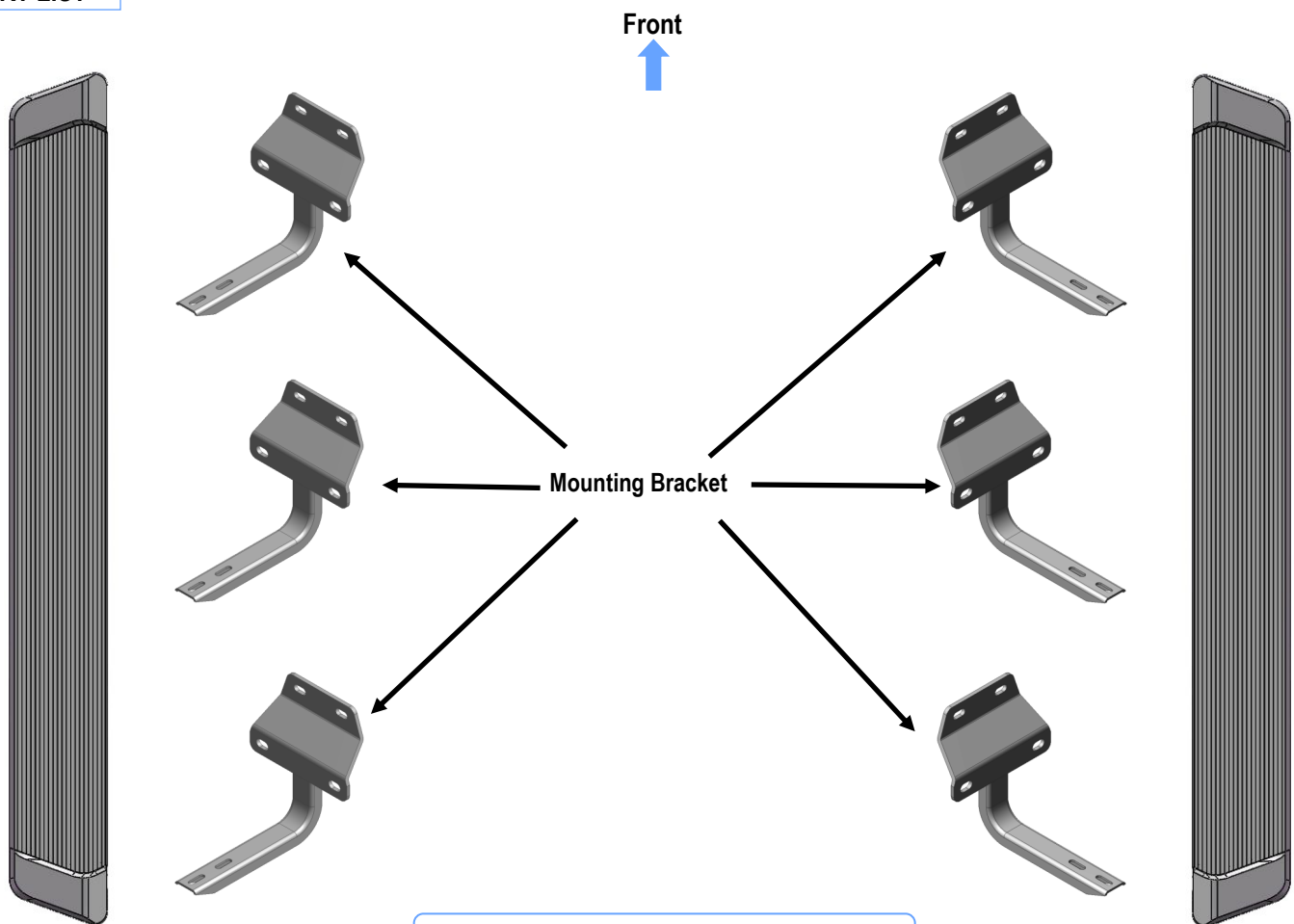
PART#: IB-R175A-B

READ INSTRUCTIONS CAREFULLY BEFORE
STARTING INSTALLATION. REMOVE CONTENTS
FROM BOX AND VERIFY ALL PARTS ARE PRE-
SENT. ASSISTANCE IS RECOMMENDED.

*ROCKER PANEL MOUNT
*NO DRILLING REQUIRED

Fastener Size	Tightening Torque (ft-lbs)
6mm	6-7
8mm	16-18
10mm	31-32
12mm	56-58
14mm	92-94

PART LIST



Note: All (6) Mounting Brackets Are Universal.

Customer Support: info@iboardauto.com

iBoard®



X18

M8 Plastic Washer



X18

M8 Large Flat Washer



X18

M8 Nylon Lock Nut



X12

M6X1-20mm
Square Head Bolt



X12

M6 Large Flat
Washer

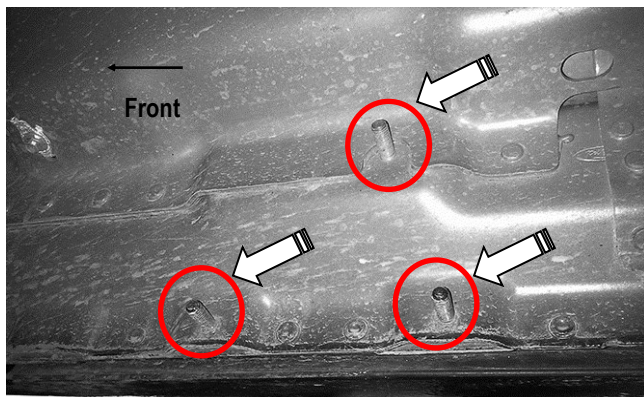


X12

M6X1 Nylon
Lock Nut

STEP 1

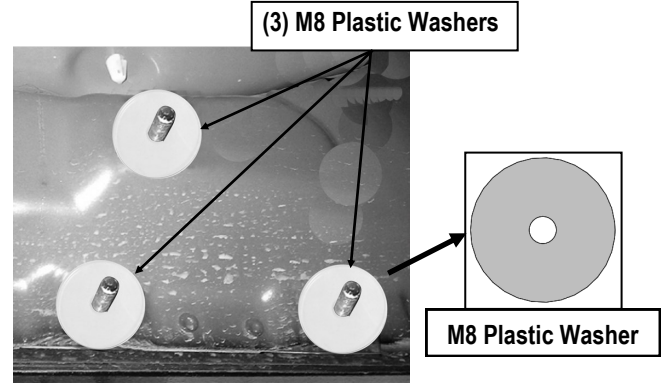
Start the installation under the passenger side of the vehicle. Locate the front factory running board mounting location along the inner side of the body, (Fig 1).



(Fig 1) Passenger Side Front Mounting Location

STEP 2

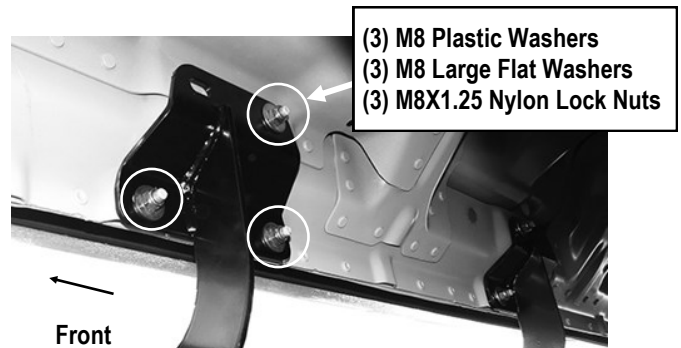
Slide (1) M8 Plastic Washer over each factory mounting stud in the body panel, (Fig 2). **IMPORTANT:** The M8 Plastic Washers are designed to prevent corrosion between the aluminum body panel and the steel mounting brackets. **Do not install the Brackets without the Plastic Washers.**



(Fig 2) Thread M8 Plastic Washers Onto All Mounting Studs (Passenger Side Rear Mounting Location Pictured)

STEP 3

Select (1) Mounting Bracket. **NOTE:** All (6) Mounting Brackets are universal and will fit driver or passenger side. Attach the Mounting Bracket to the (3) factory studs on Passenger Side Front Mounting Location with (3) M8 Large Flat Washers and (3) M8X1.25 Nylon Lock Nuts, (Fig 3). Do not fully tighten the hardware at this time.



(Fig 3) Passenger Front Mounting Bracket Installation

iBoard®

STEP 4

Move to the passenger side center & rear mounting locations of the vehicle. Repeat **Steps 1—3** to install the passenger side Center & Rear Mounting Brackets.

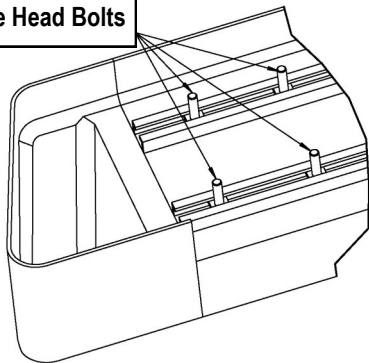
NOTE: All (6) Mounting Brackets will fit left or right side.

STEP 5

Select a Running Board. Slip (3) M6X1-20mm Square Head Bolts into each bottom channel (**Fig 4**). Carefully position the Running Board onto the (3) Mounting Brackets.

IMPORTANT: Do not slide the Running Board on the Brackets or the bottom surface of the board will be damaged. Attach the Running Board to each Mounting Brackets with (2) M6x1-20mm Square Head Bolts, (2) M6 Large Flat Washers and (2) M6 X1 Nylon Lock Nuts (**Fig 5**). Do not fully tighten at this time.

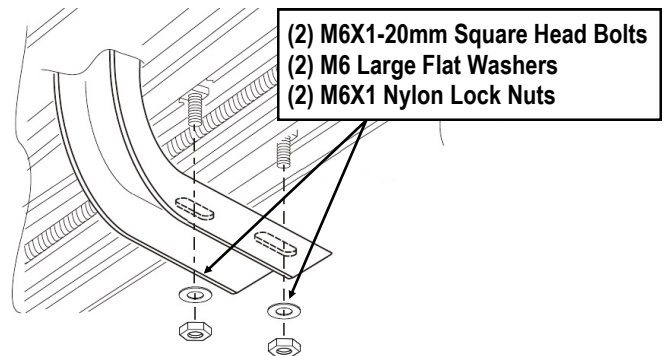
M6X1-20mm Square Head Bolts



(Fig 4) Slip M6X1-20mm Square Head Bolts Into The Bottom Channels

STEP 6

Level and adjust the Running Board and fully tighten all hardware.



(Fig 5) Running Board Installed Onto Mounting Bracket

STEP 7

Repeat **Steps 1-6** for the other side Running Board installation. The installation is completed (**Fig 6**).



(Fig 6) Installation Completed

Attention

Do periodic inspections to the installation to make sure that all hardware is secure and tight.

In order to protect your bars/boards, please use only mild soap/non-abrasive products for cleaning.