



iBoard® Series

INSTALLATION INSTRUCTIONS

PART#: IB-P003S Y&H

BEFORE INSTALLATION

REMOVE CONTENTS FROM BOX. VERIFY ALL PARTS ARE PRESENT. READ INSTRUCTIONS CAREFULLY BEFORE STARTING INSTALLATION. ASSISTANCE IS RECOMMENDED. THANK YOU FOR CHOOSING OUR PRODUCT!

***ROCKER PANEL MOUNT**

***NO DRILLING REQUIRED**

Torque Value

Fastener Size	Tightening Torque (ft-lbs)	Required
6mm	6-7	X
8mm	16-18	√
10mm	31-32	√
12mm	56-58	X
14mm	92-94	X

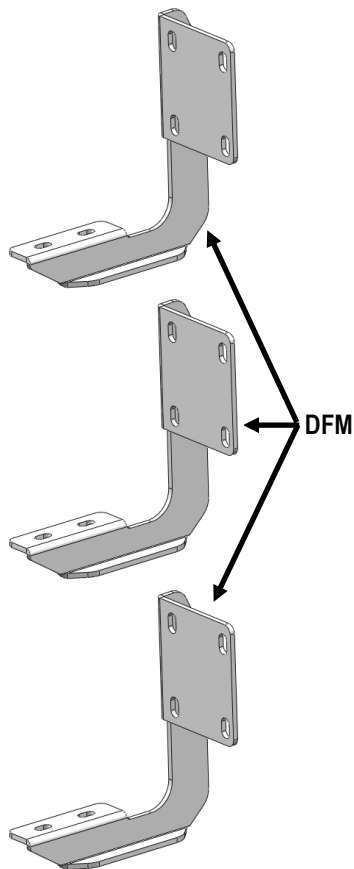
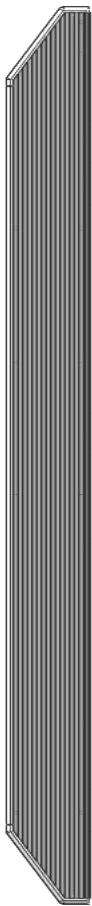


Scan for
Installation Video

Mounting Bracket List			
Item	QTY	Bracket Label	Description
1#	3	DFM	Mounting Bracket for Driver Side
2#	3	PFM	Mounting Bracket for Passenger Side

PART LIST

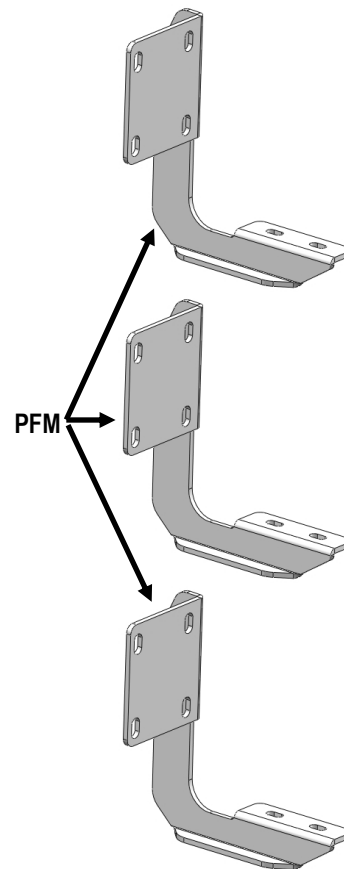
Driver Side Step Bar



Front



Passenger Side Step Bar





Scan for
Installation Video

Hardware Package A (For Bracket Installation)

Item	QTY	Description	Item	QTY	Description
A1	24	M10X1.5-30 Hex Bolts	A4	24	M10 Lock Washers
A2	4	M10 Large Flat Washers	A5	12	M10 Hex Nuts
A3	36	M10 Flat Washers	A6	12	M10 Clip Nuts



A1



A2



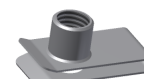
A3



A4



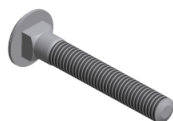
A5



A6

Hardware Package B (For Stainless Steel Step Bar Installation)

Item	QTY	Description	Item	QTY	Description
B1	12	M8X1.25-35mm Carriage Bolts	B3	12	M8 Nylon Lock Nuts
B2	12	M8 Large Flat Washers	B4	6	Sliders (Packed with Mounting Brackets)



B1



B2



B3



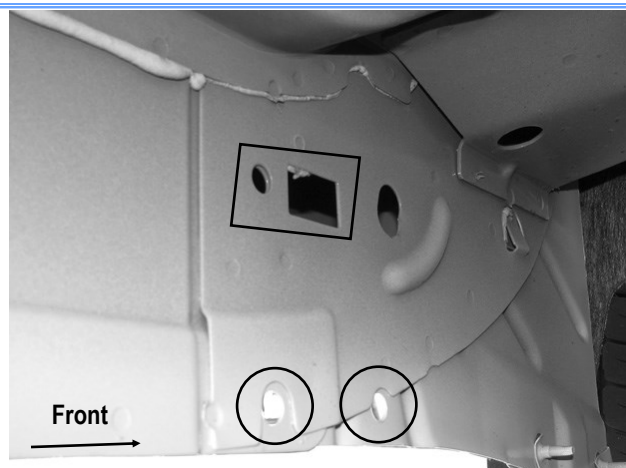
B4



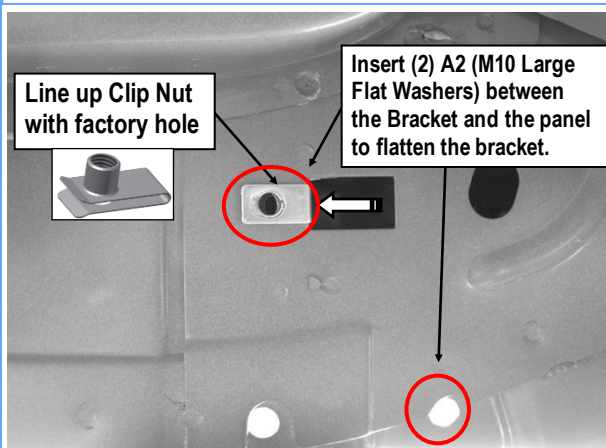
STEP 1

Start from the driver side front of the vehicle. Identify (3) factory holes under the front door, **(Fig 1)**. Insert (1) A6 (M10 Clip Nut) into round hole next to the rectangular opening.

Note: The threaded nut on the M10 Clip Nut must go towards the inside of the body panel, **(Fig 2)**.



(Fig 1) Driver Side Front Mounting Location



(Fig 2) Insert (1) M10 Clip Nut

STEP 3

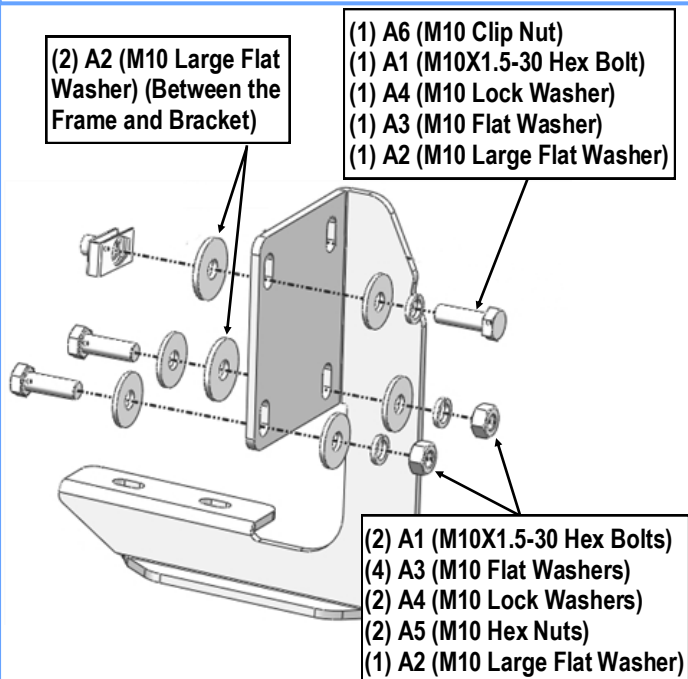
Select (1) **DFM**, attach the bracket to the installed M10 Clip Nut with (1) A1 (M10X1.5-30 Hex Bolt), (1) A4 (M10 Lock Washer)

and (1) A3 (M10 Flat Washers).

And then secure the lower of the bracket to the pinch weld with (2) A1 (M10X1.5-30 Hex Bolts), (2) A4 (M10 Lock Washers), (4) A3 (M10 Flat Washers) and (2) A5 (M10 Hex Nuts), **(Figs 3 & 4)**. Do not fully tighten hardware at this time.

NOTE:

- Before attach the mounting bracket to the mounting location, insert (2) A2 (M10 Large Flat Washer) between the bracket and the rocker panel & pinch weld, as shown **(Figs 2 & 3)**.
- Insert Hex Bolts in from the outside, through the pinch weld and then the Bracket.



(Fig 3) Driver Side Front Mounting Bracket Installation

STEP 4

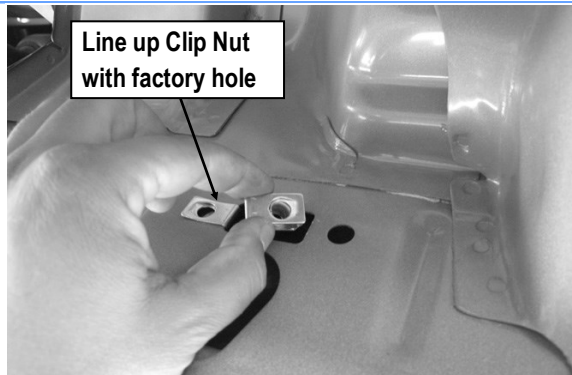
Move to the driver side center mounting location. Repeat **Step 2** to install (2) A6 (M10 Clip Nuts), **(Figs 4-5)**.

Attach (1) Driver Center Mounting Bracket (**DFM**) to the installed A6 (M10 Clip Nuts) with (2) A1 (M10X1.5-30 Hex Bolts), (2) A4 (M10 Lock Washers) and (2) A3 (M10 Flat Washers); to

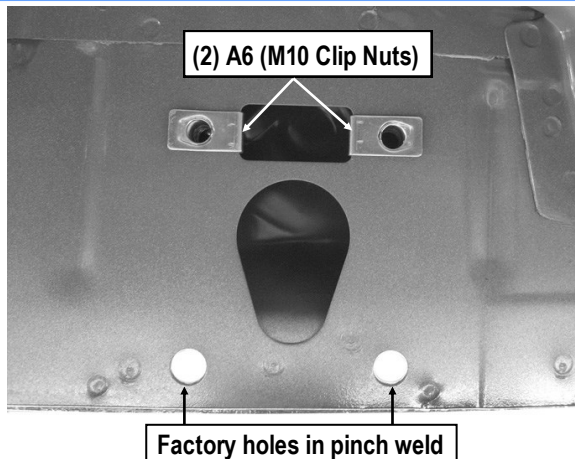


the pinch weld with (2) A1 (M10X1.5-30 Hex Bolts), (2) A4 (M10 Lock Washers), (4) A3 (M10 Flat Washers) and (2) A5 (M10 Hex Nuts). Do not fully tighten hardware at this time.

Note: All (3) Driver side brackets are universal. Repeat to install driver rear mounting bracket.



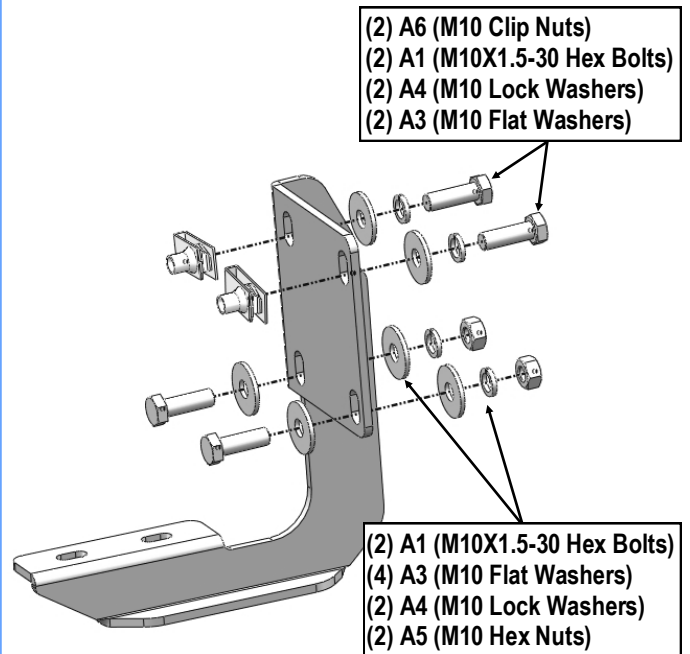
(Fig 4) Driver Side Center Mounting Location (Example)



(Fig 5) Insert (2) M10 Clip Nuts

STEP 5

Move to the driver side rear location. Then, repeat **Step 4** to install driver side rear Brackets (Fig 6). Do not fully tighten hardware at this time.



(Fig 6) Driver Side Center Mounting Bracket Installation

STEP 6

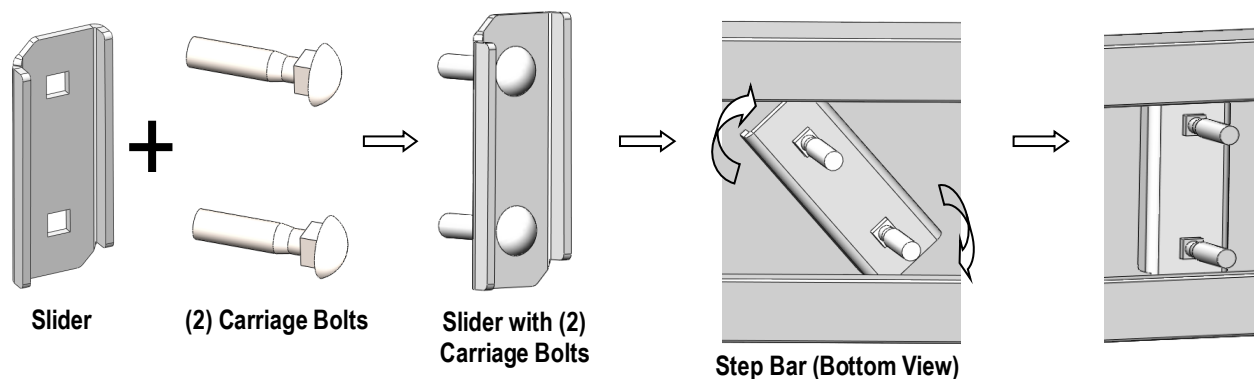
Once all (3) Driver side mounting brackets are installed, then proceed to the Step Bar installation. (Figs 7 & 8)

- (1) Select (1) B4 (Slider) and (2) B1 (M8X1.25-35 Carriage Bolts);
- (2) Install (2) B1 (M8X1.25-35 Carriage Bolts) in (1) Slider.
- (3) Slide the Slider (with carriage bolts) to the **Step Bar**.
- (4) Repeat to install the other (2) B4 (sliders) to the step bar.
- (5) Attach the Step Bar (with the Sliders) onto the installed mounting brackets. Position the Sliders to the installed brackets. Secure the Step Bar to the installed Brackets by using (6) A3 (M8 Flat Washers) and (6) B3 (M8 Nylon Lock Nuts) and (3) B4 (Sliders), (Fig 8). Do not fully tighten hardware at this time.

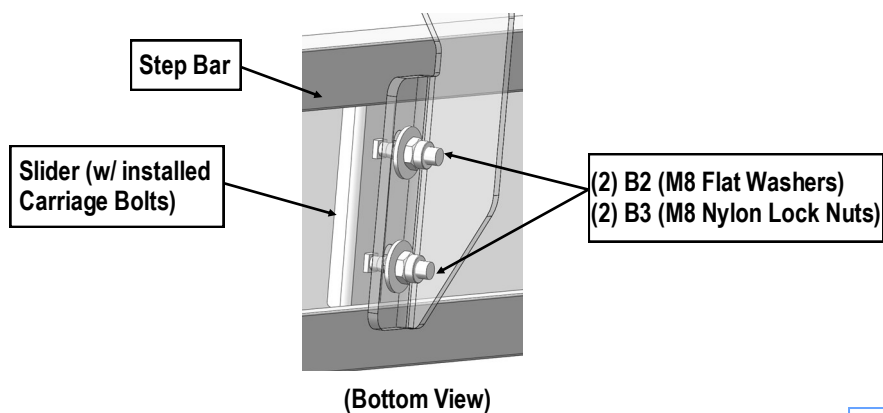
Note: The Sliders are packed with the Mounting Bracket.

Level and adjust the Step Bar and fully tighten all hardware.

Repeat **Steps 2-6** for the other side Step Bar installation. **The installation is completed!!!**



(Fig 7) Slider Installation



(Fig 8) Step Bar Installation

Attention

Do periodic inspections to the installation to make sure that all hardware is secure and tight.
In order to protect your bars/boards, please use mild soap/non-abrasive products for cleaning only.