



PART#: IB-P234Y&H

iBoard® Series

READ INSTRUCTIONS CAREFULLY BEFORE STARTING INSTALLATION. REMOVE CONTENTS FROM BOX AND VERIFY ALL PARTS ARE PRESENT. ASSISTANCE IS RECOMMENDED.

*ROCKER PANEL MOUNT
*NO DRILLING REQUIRED

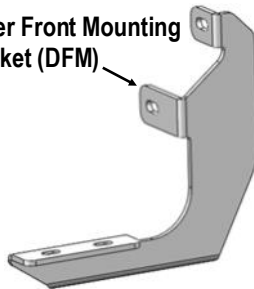
Fastener Size	Tightening Torque (ft-lbs)	Required
6mm	6-7	X
8mm	16-18	√
10mm	31-32	X
12mm	56-58	X
14mm	92-94	X

PART LIST

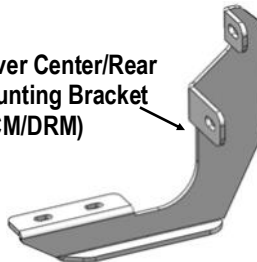
Driver Side Step Bar



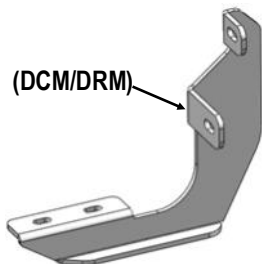
Driver Front Mounting Bracket (DFM)



Driver Center/Rear Mounting Bracket (DCM/DRM)



(DCM/DRM)



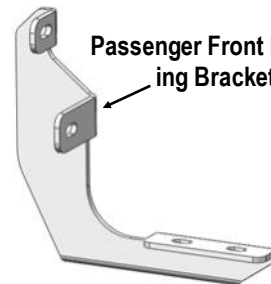
Front



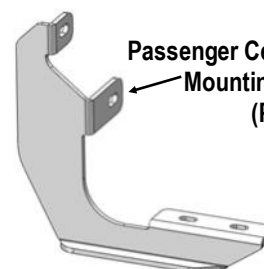
Passenger Side Step Bar



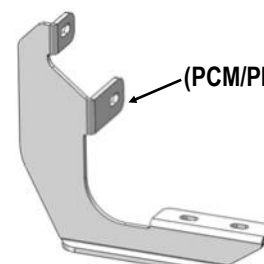
Passenger Front Mounting Bracket (PFM)



Passenger Center/Rear Mounting Bracket (PCM/PRM)










(PCM/PRM)





Scan for
Installation Video

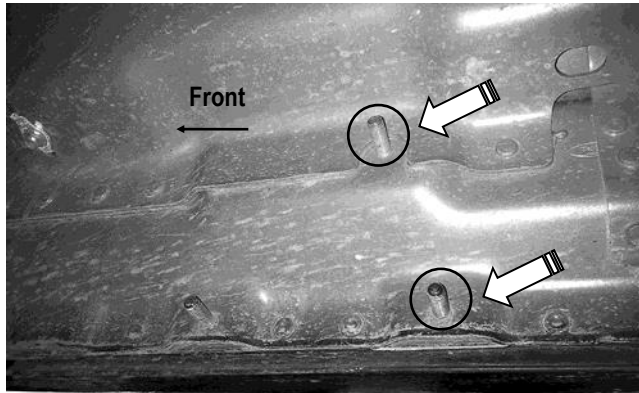
Hardware Package A (For Bracket Installation)					
Item	QTY	Description	Item	QTY	Description
1#	12	M8 Plastic Washers	3#	12	M8 Nylon Lock Nuts
2#	12	M8 Flat Washers			
<div style="display: flex; justify-content: space-around; align-items: center;"> <div style="text-align: center;">  <p>1 #</p> </div> <div style="text-align: center;">  <p>2 #</p> </div> <div style="text-align: center;">  <p>3 #</p> </div> </div>					

Hardware Package B (For Step Bar Installation)					
Item	QTY	Description	Item	QTY	Description
1#	12	M8X1.25-35mm Carriage Bolts	3#	12	M8 Nylon Lock Nuts
2#	12	M8 Large Flat Washers	4#	6	Sliders (Packed with Mounting Brackets)
<div style="display: flex; justify-content: space-around; align-items: center;"> <div style="text-align: center;">  <p>1 #</p> </div> <div style="text-align: center;">  <p>2 #</p> </div> <div style="text-align: center;">  <p>3 #</p> </div> <div style="text-align: center;">  <p>4 #</p> </div> </div>					



STEP 1

Start installation from the passenger side front of the vehicle. Locate the Passenger Side Front Mounting Location along the inner side of the body panel, **(Fig 1)**.



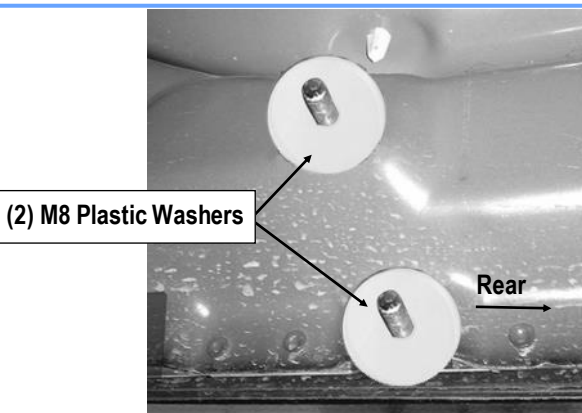
(Fig 1) Passenger Side Front Mounting Location

STEP 2

Thread (2) M8 Plastic Washers over the (2) factory mounting studs on the body panel, **(Fig 2)**.

IMPORTANT: The M8 Plastic Washers are designed to prevent corrosion between the aluminum body panel and the steel Mounting Brackets.

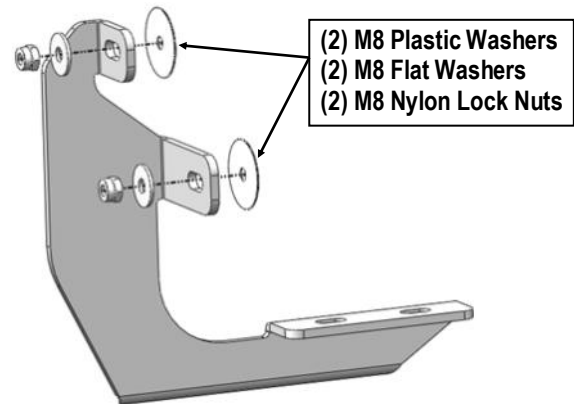
Note: Do not install the Brackets without the Plastic Washers.



(Fig 2) M8 Plastic Washers Installed

STEP 3

Select Passenger Front Mounting Bracket **(PFM)**. Attach the Passenger Front Mounting Bracket **(PFM)** to the (2) factory studs with (2) M8 Flat Washers and (2) M8 Nylon Lock Nuts, **(Fig 3)**. Do not fully tighten hardware at this time.



(Fig 3) Passenger Front Mounting Bracket Installation

STEP 4

Move to the Passenger Side Center & Rear Locations of the vehicle. Select (2) Passenger Center / Rear Mounting Brackets **(PCM/PRM)**. Repeat **Steps 1—3** to install the passenger side Center & Rear Mounting Brackets.

STEP 5

Once all (3) Passenger side mounting brackets are installed, then proceed to the Step Bar installation. **(Figs 4 & 5)**

(1) Select (1) Slider and (2) M8X1.25-35mm Carriage Bolts;

(2) Install (2) M8X1.25-35mm Carriage Bolts in (1) Slider.

(3) Slide the Slider (with carriage bolts) to the **Step Bar**.

(4) Repeat to install the other (2) sliders to the step bar.

(5) Attach the Step Bar (with the Sliders) onto the installed mounting brackets. Position the Sliders to the installed brackets. Secure the Step Bar to the installed Brackets by using (6)



M8 Large Flat Washers and (6) M8 Nylon Lock Nuts and (3) Sliders, **(Fig 5)**. Do not fully tighten hardware at this time.

Note: The Sliders are packed with the Mounting Brackets.

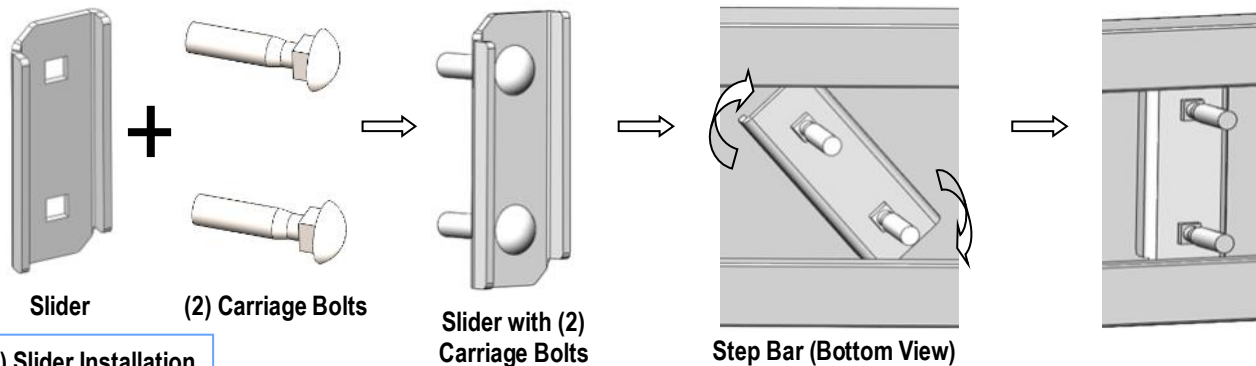
Level and adjust the Step Bar and fully tighten all hardware.

Repeat **Steps 1-5** for the other side Step Bar installation. **The installation is completed!!!**

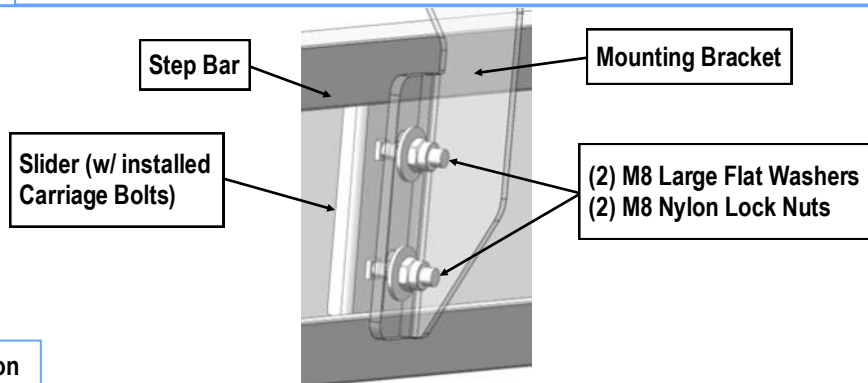
Attention

Do periodic inspections to the installation to make sure that all hardware is secure and tight.

In order to protect your bars/boards, please use mild soap/non-abrasive products for cleaning only.



(Fig 4) Slider Installation



(Fig 5) Step Bar Installation